



# Coastal Bend Workforce Area

Area	Area Type	Latest Monthly Data August 2009				Previous Month July 2009				Year Ago August 2008			
		Labor Force	Employment	Unemployment	Rate	Labor Force	Employment	Unemployment	Rate	Labor Force	Employment	Unemployment	Rate
Texas	State	12,061,355	11,079,403	981,952	8.1	12,136,607	11,138,224	998,383	8.2	11,750,624	11,129,768	620,856	5.3
Corpus Christi	MSA	206,547	190,472	16,075	7.8	209,125	192,435	16,690	8.0	205,034	194,512	10,522	5.1
Coastal Bend	WDA	279,038	256,229	22,809	8.2	281,241	257,690	23,551	8.4	273,040	258,998	14,042	5.1
National	U.S.	154,897,000	140,074,000	14,823,000	9.6	156,256,000	141,055,000	15,201,000	9.7	155,387,000	145,909,000	9,479,000	6.1
Aransas	County	11,427	10,624	803	7.0	11,577	10,733	844	7.3	11,397	10,849	548	4.8
Bee	County	11,937	10,745	1,192	10.0	11,981	10,740	1,241	10.4	11,269	10,495	774	6.9
Brooks	County	3,663	3,277	386	10.5	3,615	3,219	396	11.0	3,328	3,118	210	6.3
Duval	County	5,783	5,085	698	12.1	5,775	5,080	695	12.0	5,325	5,023	302	5.7
Jim Wells	County	23,643	21,219	2,424	10.3	23,572	21,136	2,436	10.3	21,927	20,891	1,036	4.7
Kenedy	County	256	237	19	7.4	250	232	18	7.2	241	234	7	2.9
Kleberg	County	17,172	15,877	1,295	7.5	16,815	15,503	1,312	7.8	16,393	15,637	756	4.6
Live Oak	County	5,311	4,914	397	7.5	5,353	4,928	425	7.9	5,077	4,838	239	4.7
McMullen	County	360	335	25	6.9	355	326	29	8.2	354	335	19	5.4
Nueces	County	164,304	151,999	12,305	7.5	166,369	153,565	12,804	7.7	163,463	155,223	8,240	5.0
Refugio	County	4,365	4,067	298	6.8	4,400	4,091	309	7.0	4,092	3,915	177	4.3
San Patricio	County	30,817	27,850	2,967	9.6	31,179	28,137	3,042	9.8	30,174	28,440	1,734	5.7

Earnings for all occupations Coastal Bend, expressed as hourly rate (TWC):

**Coastal Bend - All Occupations - Average \$16.20/hr.; Entry level \$7.51/hr.; Experienced workers \$20.54/hr.; top 10% \$29.66/hr.**  
**Texas - All Occupations - Average \$18.90/hr.; Entry level \$8.16/hr.; Experienced workers \$ 24.27/hr.; top 10% \$35.43/hr.**

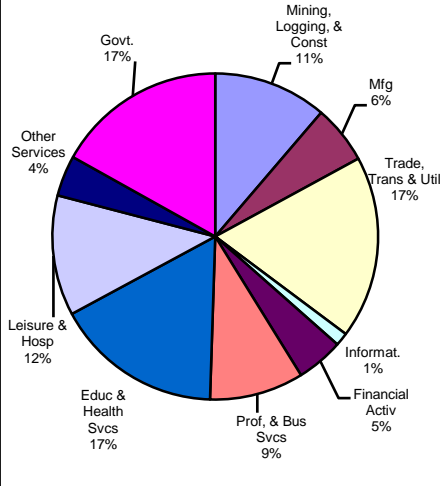
Educational Attainment for population 25 years of age and older - Corpus Christi (Census American Fact Finder / American Community Survey):

**Less than 9<sup>th</sup> grade 9.9%; 9<sup>th</sup> thru 11<sup>th</sup> grade 12.0%; 12<sup>th</sup> grade and GED 27.4%; some college 23.3%; Associates degree 7.1%; Bachelors degree 13.2%; Graduate or Professional degrees 7.1%**

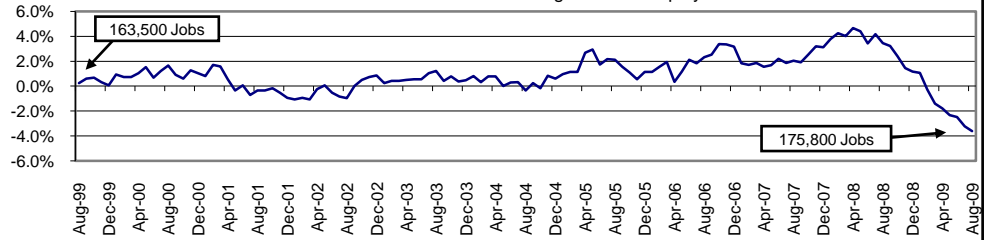
Median earnings Corpus Christi by education for persons 25 years of age & up (Census AFF / ACS): \$27,211 (\$33,893 male/ \$21,233 female)

**Less than High School \$15,396      Some College or Associates \$30,595      Graduate & Professional \$53,951**  
**High School & GED \$21,460      Bachelor's \$41,044**

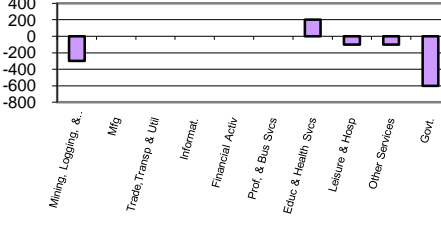
### Industry Composition



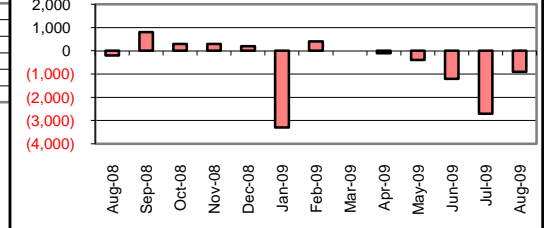
### Annual Growth Rate for Total NonAgricultural Employment



### Monthly Change by Industry



### Monthly Change in Total Nonag Employment



### Employment by Industry

	Employment			Monthly Change		Annual Change	
	Aug-2009	Jul-2009	Aug-2008	Actual	%	Actual	%
Total Nonagricultural	175,800	176,700	182,400	-900	-0.5%	-6,600	-3.6%
Mining, Logging, & Const	19,800	20,100	22,000	-300	-1.5%	-2,200	-10.0%
Manufacturing	10,200	10,200	11,000	0	0.0%	-800	-7.3%
Trade, Transp., & Utilities	31,900	31,900	33,000	0	0.0%	-1,100	-3.3%
Information	2,300	2,300	2,500	0	0.0%	-200	-8.0%
Financial Activities	8,200	8,200	8,300	0	0.0%	-100	-1.2%
Profes., & Business Svcs	16,400	16,400	16,800	0	0.0%	-400	-2.4%
Education & Health Svcs	29,200	29,000	28,300	200	0.7%	900	3.2%
Leisure & Hospitality	21,000	21,100	21,700	-100	-0.5%	-700	-3.2%
Other Services	7,100	7,200	7,200	-100	-1.4%	-100	-1.4%
Government	29,700	30,300	31,600	-600	-2.0%	-1,900	-6.0%

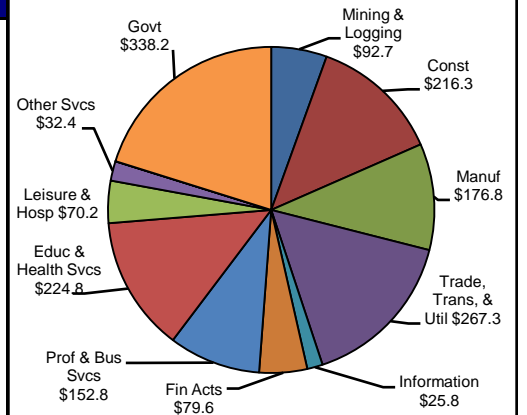
### Size Class of Industries as of March 2009

Size Class	Employees Per Firm	Number of Firms	Employment in Size Class	% of Total Employment
9	1000+	20	45853	25.8%
8	500-999	21	14078	7.9%
7	250-499	43	14713	8.3%
6	100-249	188	28546	16.1%
5	50-99	283	19762	11.1%
4	20-49	745	22698	12.8%
3	10-19	1027	13977	7.9%
2	5-9	1535	10200	5.7%
1	1-4	3703	7846	4.4%
0	0	602	0	0.0%
<b>TOTAL</b>		<b>8167</b>	<b>177673</b>	<b>100.0%</b>

### Comments for August 2009

The Corpus Christi MSA lost 900 jobs over the month in Total Nonagricultural Employment. This over-the-month decrease was the fifth consecutive decrease for the area. The decline in employment dropped the Corpus Christi MSA growth rate down to -3.6 percent for the year. General Merchandise Stores added 100 jobs over the month. This increase matched the five-year average increase. Employment for the industry grew at an annual growth rate of 2.3 percent. State Government lost 300 jobs over the month. This decline was 100 jobs larger than the five-year average decrease and was the fourth over-the-month employment drop for the year. Two-hundred jobs were lost since this time last year.

### 1st Quarter Wages by Industry (in millions)



### Unemployment Information (all estimates are in thousands)

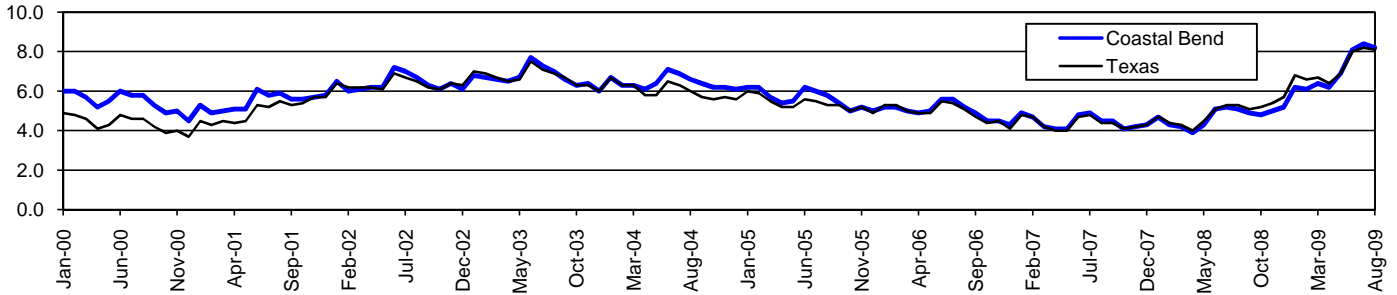
	Corpus Christi MSA				Texas (Actual)				United States (Actual)			
	C.L.F.	Emp.	Unemp.	% Rate	C.L.F.	Emp.	Unemp.	% Rate	C.L.F.	Emp.	Unemp.	% Rate
Aug-2009	206.6	190.5	16.1	7.8	12,061.4	11,079.4	982.0	8.1	154,897.0	140,074.0	14,823.0	9.6
Jul-2009	209.1	192.4	16.7	8.0	12,136.6	11,138.2	998.4	8.2	156,255.0	141,055.0	15,201.0	9.7
Aug-2008	205.0	194.5	10.5	5.1	11,750.7	11,129.8	620.9	5.3	155,387.0	145,909.0	9,479.0	6.1

# Coastal Bend Workforce Development Area

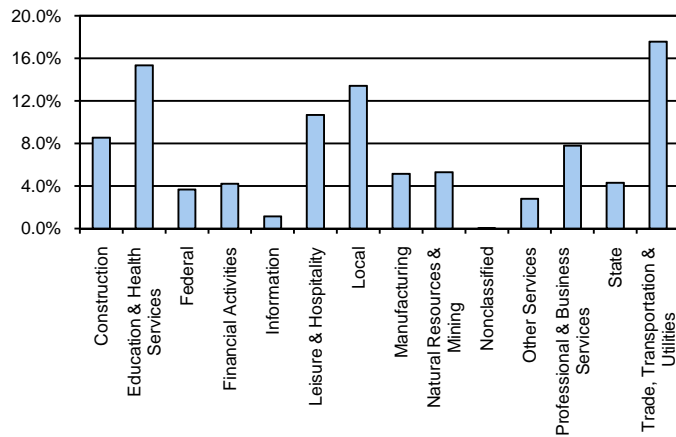
August 2009

Coastal Bend WDA					Texas				
	CLF	Employed	Unemployed	Rate		CLF	Employed	Unemployed	Rate
Aug-09	279,038	256,229	22,809	8.2	Aug-09	12,061,355	11,079,403	981,952	8.1
Jul-09	281,241	257,690	23,551	8.4	Jul-09	12,136,607	11,138,224	998,383	8.2
Aug-08	273,040	258,998	14,042	5.1	Aug-08	11,750,624	11,129,768	620,856	5.3

### Historical Unemployment Rates



### Coastal Bend WDA Industry Composition 1st Quarter 2009



### Total WDA Claims

	Aug-09	Jul-09	Aug-08	OTY
Initial	2,215	2,467	1,284	931
Continued	15,643	16,125	6,970	8,673
<b>Continued Claims for the Week of the 12th</b>				
Continued	5,568	6,272	2,110	3,458

### Texas Unemployment Insurance Claims Filed

	Aug-09	Jul-09	Aug-08	OTY
Initial	98,444	112,737	68,139	30,305
Continued	1,404,113	1,340,360	543,681	860,432
<b>Continued Claims for the Week of the 12th</b>				
Continued	295,488	313,137	125,839	169,649

### Coastal Bend WDA Average Weekly Wage

	Coastal Bend	Qtr Change	Texas
1st Quarter 2009	\$706.39	-75.06	\$884.74
4th Quarter 2008	\$781.45	<b>OTY Change</b>	\$932.81
1st Quarter 2008	\$724.53	-18.14	\$903.44

### NAICS Covered Employment Quarterly Data 1st Quarter 2009

SUPER SECTOR	Employment	Change	
		Quarter	Year
Construction	19,364	-783	-28
Education & Health Services	34,854	74	1,213
Federal	8,341	-69	292
Financial Activities	9,583	-270	-453
Information	2,622	-34	-137
Leisure & Hospitality	24,241	-219	-1
Local	30,453	434	401
Manufacturing	11,692	-309	-711
Natural Resources & Mining	12,048	-2,196	-666
Nonclassified	70	23	-9
Other Services	6,384	-293	-170
Professional & Business Services	17,707	-802	-1,004
State	9,793	-30	717
Trade, Transportation & Utilities	39,913	-1,317	-952
<b>TOTAL</b>	<b>227,065</b>	<b>-5,791</b>	<b>-1,508</b>

### Size Class Employment Composition 1st Quarter 2009

