



# Coastal Bend Workforce Area

Area	Area Type	Latest Monthly Data April 2010				Previous Monthly Data March 2010				Year Ago April 2009			
		Labor Force	Employment	Unemployment	Rate	Labor Force	Employment	Unemployment	Rate	Labor Force	Employment	Unemployment	Rate
U.S.	Nation	153,911,000	139,302,000	14,609,000	9.5	153,660,000	137,983,000	15,678,000	10.2	153,834,000	140,586,000	13,248,000	8.6
Texas	State	12,210,860	11,221,229	989,631	8.1	12,122,374	11,127,647	994,727	8.2	11,832,504	11,031,509	800,995	6.8
Corpus Christi	MSA	214,265	197,273	16,992	7.9	211,276	194,552	16,724	7.9	206,265	193,361	12,904	6.3
Coastal Bend	WDA	285,407	262,487	22,920	8.0	281,912	259,255	22,657	8.0	275,821	257,640	18,181	6.6
Aransas	County	12,041	11,055	986	8.2	11,900	10,902	998	8.4	11,524	10,836	688	6.0
Bee	County	12,165	11,018	1,147	9.4	12,126	11,006	1,120	9.2	11,765	10,764	1,001	8.5
Brooks	County	3,422	3,098	324	9.5	3,407	3,097	310	9.1	3,347	3,060	287	8.6
Duval	County	5,279	4,654	625	11.8	5,250	4,604	646	12.3	5,295	4,762	533	10.1
Jim Wells	County	22,532	20,628	1,904	8.5	22,387	20,459	1,928	8.6	22,025	20,223	1,802	8.2
Kenedy	County	253	239	14	5.5	265	237	28	10.6	248	235	13	5.2
Kleberg	County	17,684	16,483	1,201	6.8	17,483	16,296	1,187	6.8	17,183	16,160	1,023	6.0
Live Oak	County	5,171	4,787	384	7.4	5,129	4,737	392	7.6	5,190	4,833	357	6.9
McMullen	County	360	333	27	7.5	349	327	22	6.3	362	336	26	7.2
Nueces	County	170,228	157,496	12,732	7.5	167,718	155,324	12,394	7.4	164,319	154,373	9,946	6.1
Refugio	County	4,276	3,974	302	7.1	4,240	3,940	300	7.1	4,141	3,905	236	5.7
San Patricio	County	31,996	28,722	3,274	10.2	31,658	28,326	3,332	10.5	30,422	28,153	2,269	7.5

Earnings for all occupations Coastal Bend, expressed as hourly rate (TWC):

**Coastal Bend - All Occupations - Average \$16.20/hr.; Entry level \$7.51/hr.; Experienced workers \$20.54/hr.; top 10% \$29.66/hr.**

**Texas - All Occupations - Average \$18.90/hr.; Entry level \$8.16/hr.; Experienced workers \$ 24.27/hr.; top 10% \$35.43/hr.**

Educational Attainment for population 25 years of age and older - Corpus Christi (Census American Fact Finder / American Community Survey):

**Less than 9<sup>th</sup> grade 9.9%; 9<sup>th</sup> thru 11<sup>th</sup> grade 12.0%; 12<sup>th</sup> grade and GED 27.4%; some college 23.3%; Associates degree 7.1%;**

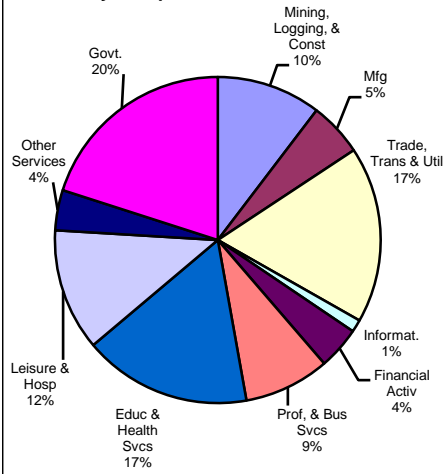
**Bachelors degree 13.2%; Graduate or Professional degrees 7.1%**

Median earnings Corpus Christi by education for persons 25 years of age & up (Census AFF / ACS): \$27,211 (\$33,893 male/ \$21,233 female)

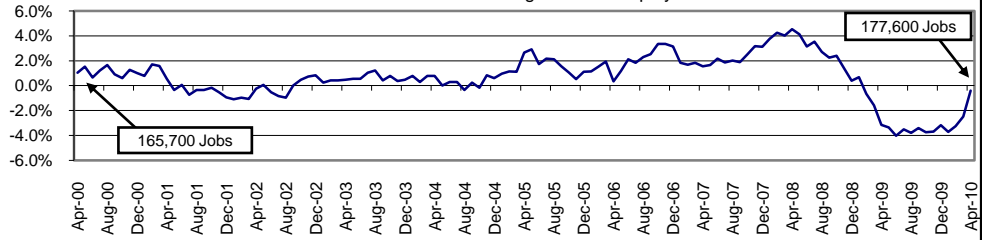
**Less than High School \$15,396 Some College or Associates \$30,595 Graduate & Professional \$53,951**

**High School & GED \$21,460 Bachelor's \$41,044**

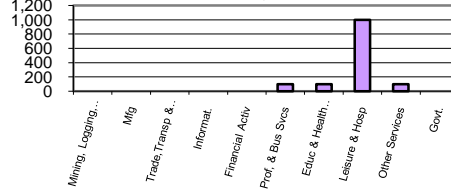
### Industry Composition



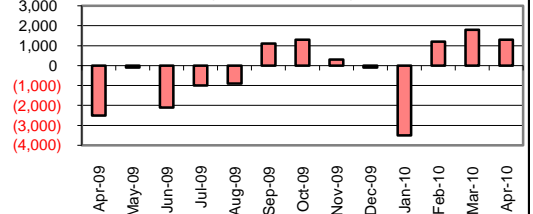
### Annual Growth Rate for Total NonAgricultural Employment



### Monthly Change by Industry



### Monthly Change in Total Nonag Employment



## Employment by Industry

	Employment			Monthly Change		Annual Change	
	Apr-2010	Mar-2010	Apr-2009	Actual	%	Actual	%
Total Nonagricultural	177,600	176,300	178,300	1,300	0.7%	-700	-0.4%
Mining, Logging, & Const	18,400	18,400	19,900	0	0.0%	-1,500	-7.5%
Manufacturing	9,500	9,500	10,200	0	0.0%	-700	-6.9%
Trade, Transp., & Utilities	31,100	31,100	31,400	0	0.0%	-300	-1.0%
Information	2,200	2,200	2,300	0	0.0%	-100	-4.4%
Financial Activities	7,500	7,500	7,600	0	0.0%	-100	-1.3%
Profes., & Business Svcs	15,100	15,000	15,400	100	0.7%	-300	-2.0%
Education & Health Svcs	29,600	29,500	28,300	100	0.3%	1,300	4.6%
Leisure & Hospitality	21,500	20,500	21,100	1,000	4.9%	400	1.9%
Other Services	7,100	7,000	7,100	100	1.4%	0	0.0%
Government	35,600	35,600	35,000	0	0.0%	600	1.7%

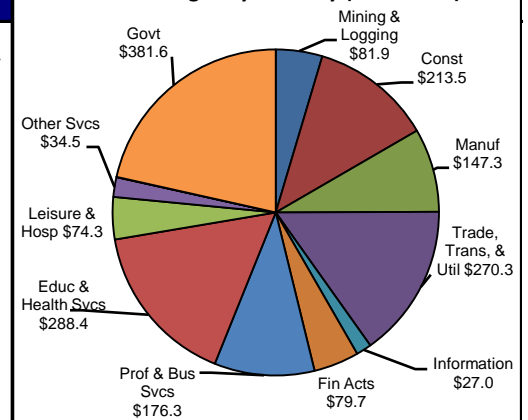
## Size Class of Industries as of December 2009

Size Class	Employees Per Firm	Number of Firms	Employment in Size Class	% of Total Employment
9	1000+	19	44721	25.6%
8	500-999	23	15479	8.9%
7	250-499	45	14346	8.2%
6	100-249	181	27403	15.7%
5	50-99	275	19103	10.9%
4	20-49	722	21777	12.5%
3	10-19	1011	13655	7.8%
2	5-9	1560	10264	5.9%
1	1-4	3757	7735	4.4%
0	0	513	0	0.0%
<b>TOTAL</b>		<b>8106</b>	<b>174483</b>	<b>100.0%</b>

## Comments for April 2010

The Corpus Christi MSA added 1,300 jobs to Total Nonagricultural Employment for April. This increase was the third consecutive month of job increases, with an average of 1,400 new jobs per month during this time period. Since January, 4,300 jobs were added, besting the five-year average increase of 3,400 jobs. Despite the recent increases, the area experienced a decrease of -0.4 percent in employment over a 12 month period. The Leisure and Hospitality Industry increased 4.9 percent in employment over the month. This increase was also the third consecutive monthly increase. Since last April, this industry grew 1.9 percent. The State Government sector added 100 jobs over the month. This increase matched the previous three April over-the-month increases. Since January, 300 jobs were added, matching the five-year average increase for this time.

## 4th Quarter Wages by Industry (in millions)



## Unemployment Information (all estimates are in thousands)

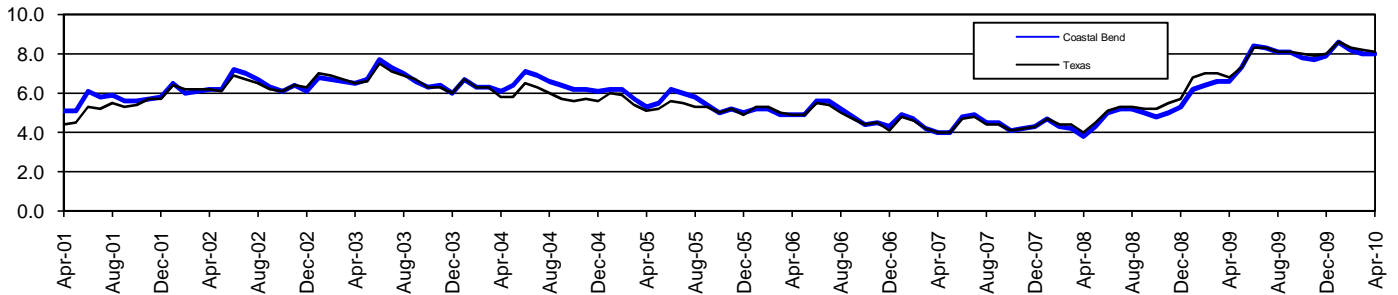
	Corpus Christi MSA				Texas (Actual)				United States (Actual)			
	C.L.F.	Emp.	Unemp.	% Rate	C.L.F.	Emp.	Unemp.	% Rate	C.L.F.	Emp.	Unemp.	% Rate
Apr-2010	214.3	197.3	17.0	7.9	12,210.8	11,221.2	989.6	8.1	153,911.0	139,302.0	14,609.0	9.5
Mar-2010	211.3	194.6	16.7	7.9	12,122.3	11,127.6	994.7	8.2	153,660.0	137,983.0	15,678.0	10.2
Apr-2009	206.3	193.4	12.9	6.3	11,832.5	11,031.5	801.0	6.8	153,834.0	140,586.0	13,248.0	8.6

# Coastal Bend Workforce Development Area\*

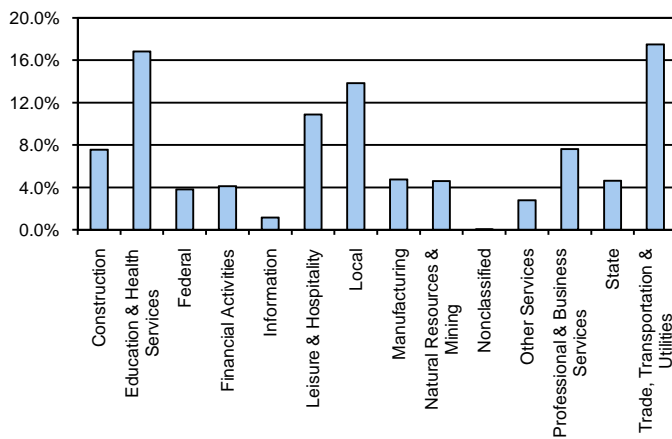
April 2010

Coastal Bend WDA					Texas				
	CLF	Employed	Unemployed	Rate		CLF	Employed	Unemployed	Rate
<b>Apr-10</b>	285,407	262,487	22,920	8.0	<b>Apr-10</b>	12,210,860	11,221,229	989,631	8.1
<b>Mar-10</b>	281,912	259,255	22,657	8.0	<b>Mar-10</b>	12,122,374	11,127,647	994,727	8.2
<b>Apr-09</b>	275,821	257,640	18,181	6.6	<b>Apr-09</b>	11,832,504	11,031,509	800,995	6.8

## Historical Unemployment Rates



## Coastal Bend WDA Industry Composition 4th Quarter 2009



## Total WDA Claims

	Apr-10	Mar-10	Apr-09	OTY
<b>Initial</b>	2,509	2,505	3,073	<b>-564</b>
<b>Continued</b>	9,711	11,345	13,571	<b>-3,860</b>
<b>Continued Claims for the Week of the 12th</b>				
<b>Continued</b>	6,119	6,733	9,107	<b>-2,988</b>

## Texas Unemployment Insurance Claims Filed

	Apr-10	Mar-10	Apr-09	OTY
<b>Initial</b>	96,295	98,362	118,036	<b>-21,741</b>
<b>Continued</b>	954,091	1,088,926	1,186,522	<b>-232,431</b>
<b>Continued Claims for the Week of the 12th</b>				
<b>Continued</b>	233,963	233,413	284,225	<b>-50,262</b>

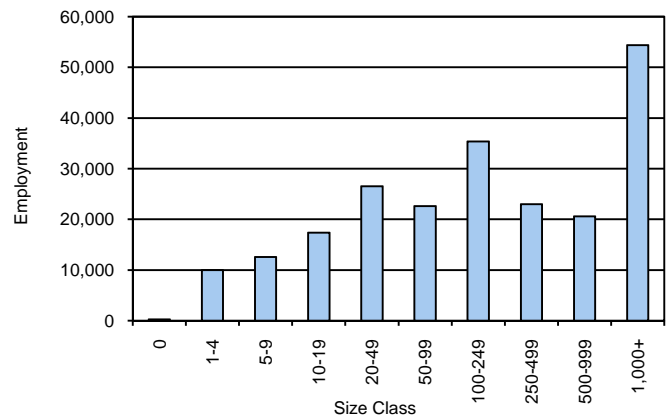
## Coastal Bend WDA Average Weekly Wage

	Coastal Bend	WDA Qtr. Chg.	Texas
<b>4th Quarter 2009</b>	\$760.61	\$61.34	\$943.97
<b>3rd Quarter 2009</b>	\$699.27	<b>WDA OTY Chg.</b>	\$844.86
<b>4th Quarter 2008</b>	\$781.45	-\$20.84	\$932.81

## NAICS Covered Employment Quarterly Data 4th Quarter 2009

SUPER SECTOR	Employment	Change	
		Quarter	Year
Construction	16,803	258	-3,344
Education & Health Services	37,474	1,489	2,694
Federal	8,510	-15	100
Financial Activities	9,144	-111	-709
Information	2,538	-35	-118
Leisure & Hospitality	24,237	-1,619	-223
Local	30,786	2,623	767
Manufacturing	10,535	-118	-1,466
Natural Resources & Mining	10,195	-67	-4,049
Nonclassified	76	23	29
Other Services	6,207	-108	-470
Professional & Business Services	16,967	409	-1,542
State	10,280	743	457
Trade, Transportation & Utilities	38,944	-35	-2,286
<b>TOTAL</b>	<b>222,696</b>	<b>3,437</b>	<b>-10,160</b>

## Size Class Employment Composition 4th Quarter 2009



\*Counties in WDA: Aransas, Bee, Brooks, Duval, Jim Wells, Kenedy, Kleberg, Live Oak, McMullen, Nueces, Refugio, & San Patricio

Available at <http://www.tracer2.com/>