

# Coastal Bend Workforce Area

(Not Seasonally Adjusted Unemployment Rates by WDA, MSA, & County)

Area	Area Type	Latest Monthly Data March 2015						Previous Monthly Data February 2015				Year Ago March 2014			
		Labor Force	Employment	Unemployment	Rate	M+-	Y+-	Labor Force	Employment	Unemployment	Rate	Labor Force	Employment	Unemployment	Rate
United States	Nation	156,906,000	148,331,000	8,575,000	5.5	0.0	-1.1	157,002,000	148,297,000	8,705,000	5.5	156,180,000	145,796,000	10,384,000	6.6
Texas	State	13,173,218	12,614,275	558,943	4.2	-0.1	-1.1	13,185,777	12,620,228	565,549	4.3	13,043,389	12,351,005	692,169	5.3
Corpus Christi	MSA	212,853	203,065	9,788	4.6	-0.1	-0.8	212,677	202,746	9,931	4.7	212,325	200,818	11,507	5.4
Coastal Bend	WDA	280,222	266,859	13,363	4.8	0.1	-0.6	279,569	266,313	13,256	4.7	279,045	263,937	15,108	5.4
Aransas	County	10,222	9,746	476	4.7	-0.1	-1.0	10,184	9,691	493	4.8	10,225	9,643	582	5.7
Bee	County	10,971	10,387	584	5.3	0.3	-0.5	10,879	10,337	542	5.0	11,075	10,429	646	5.8
Brooks	County	2,673	2,468	205	7.7	0.4	-0.2	2,677	2,481	196	7.3	2,741	2,525	216	7.9
Duval	County	5,760	5,396	364	6.3	0.4	0.4	5,676	5,339	337	5.9	5,602	5,272	330	5.9
Jim Wells	County	20,540	19,327	1,213	5.9	0.6	-0.4	20,441	19,357	1,084	5.3	20,233	19,115	1,118	5.5
Kenedy	County	406	398	8	2.0	0.0	-2.4	402	394	8	2.0	366	350	16	4.4
Kleberg	County	15,538	14,749	789	5.1	0.2	-0.4	15,489	14,731	758	4.9	15,727	14,858	869	5.5
Live Oak	County	6,423	6,203	220	3.4	0.0	-0.3	6,401	6,186	215	3.4	6,173	5,945	228	3.7
McMullen	County	1,318	1,296	22	1.7	0.1	0.0	1,256	1,236	20	1.6	1,102	1,083	19	1.7
Nueces	County	171,218	163,785	7,433	4.3	-0.1	-1.0	171,116	163,568	7,548	4.4	170,955	161,975	8,980	5.3
Refugio	County	3,740	3,570	170	4.5	0.0	0.2	3,671	3,506	165	4.5	3,701	3,542	159	4.3
San Patricio	County	31,413	29,534	1,879	6.0	0.0	-0.2	31,377	29,487	1,890	6.0	31,145	29,200	1,945	6.2

(M+-) Change in unemployment rate from last month (Increase) (Decrease)

(Y+-) Change in unemployment rate from last year (Increase) (Decrease)

- Earnings for all occupations Coastal Bend, expressed as hourly rate (TWC):

Coastal Bend	All Occupations-	Average \$18.35/hr.	Entry level \$8.58/hr.	Experienced workers \$23.24/hr.	Top 10% \$33.56/hr.
Texas	All Occupations-	Average \$20.97/hr.	Entry level \$8.88/hr.	Experienced workers \$ 27.02/hr.	Top 10% \$39.64/hr.

- Educational Attainment for population 25 years of age and older - Corpus Christi (Census American Fact Finder/American Community Survey):

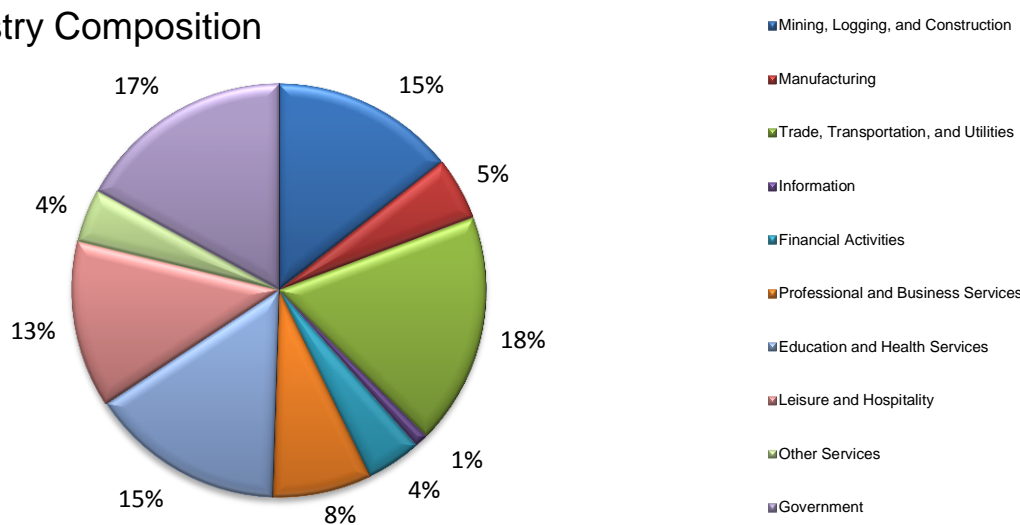
Less than 9 <sup>th</sup> grade	8.7%	12 <sup>th</sup> grade & GED	27.7%	Associates degree	7.0%	Graduate or Professional degrees	8.4%
9 <sup>th</sup> thru 11 <sup>th</sup> grade	9.3%	Some College	25.1%	Bachelors degree	13.8%		

- Median earnings Corpus Christi by education for persons 25 years of age & up (Census AFF/ACS): **\$27,211** (\$36,380 male/ \$22,328 female)

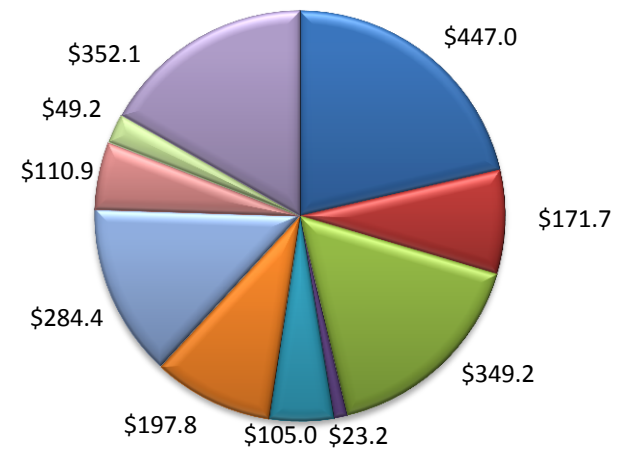
Less than High School	\$15,437	Some College or Associates	\$28,739	Graduate or Professional	\$56,681
High School & GED	\$26,818	Bachelor's	\$44,078		

(Aransas, Nueces, San Patricio)

Industry Composition



Wages by Industry (in millions)  
3rd Quarter 2014



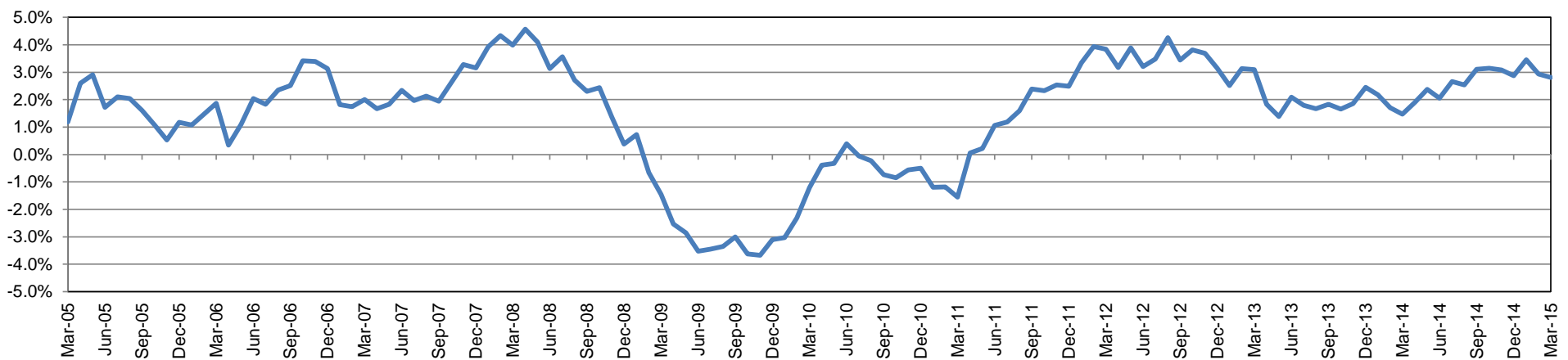
Employment by Industry

	Mar-15	Feb-15	Mar-14	Monthly Change		Annual Change	
				Actual	%	Actual	%
Total Nonfarm	198,000	196,800	192,600	1,200	0.6%	5,400	2.8%
Mining, Logging, and Construction	28,500	28,100	26,000	400	1.4%	2,500	9.6%
Manufacturing	9,700	9,700	9,800	0	0.0%	-100	-1.0%
Trade, Transportation, and Utilities	35,900	36,200	34,900	-300	-0.8%	1,000	2.9%
Information	2,100	2,100	2,100	0	0.0%	0	0.0%
Financial Activities	8,500	8,500	8,100	0	0.0%	400	4.9%
Professional and Business Services	15,300	15,200	15,700	100	0.7%	-400	-2.6%
Education and Health Services	30,200	30,100	29,100	100	0.3%	1,100	3.8%
Leisure and Hospitality	25,800	25,100	25,000	700	2.8%	800	3.2%
Other Services	8,300	8,200	8,000	100	1.2%	300	3.8%
Government	33,700	33,600	33,900	100	0.3%	-200	-0.6%

Industry Size Class

Size Class	Employees per firm	Number of Firms	September 2014		
			Employment in Size Class	% Total Employment	
9	1000+	19	41,931	22.1%	
8	500-999	22	15,165	8.0%	
7	250-499	59	20,312	10.7%	
6	100-249	224	33,707	17.7%	
5	50-99	306	21,286	11.2%	
4	20-49	824	25,323	13.3%	
3	10-19	1,098	14,963	7.9%	
2	5-9	1,509	10,001	5.3%	
1	1-4	3,570	7,383	3.9%	
0	0	572	0	0.0%	
Total			8,203	190,071	100.0%

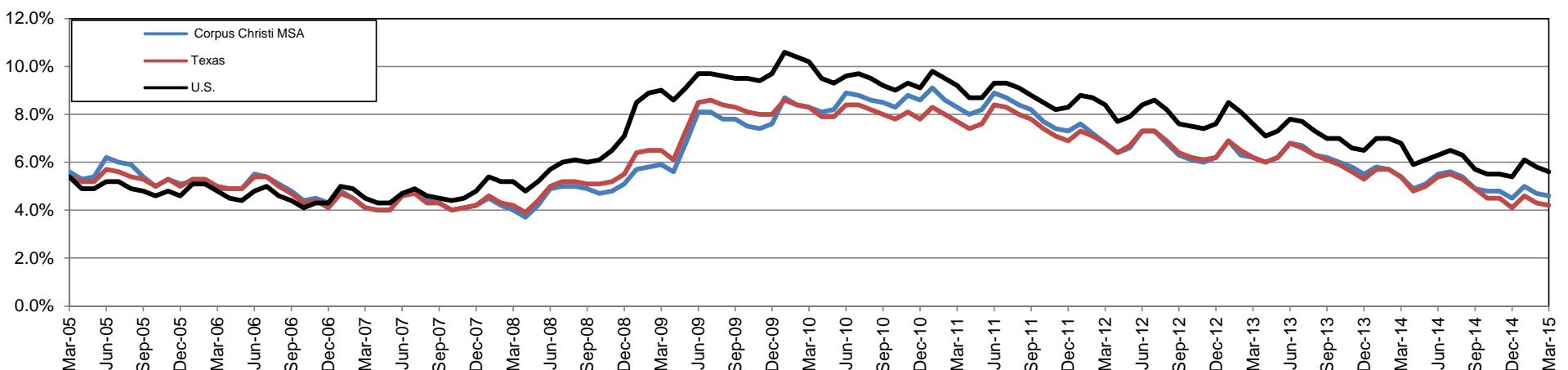
Annual Growth Rate for Total Nonagricultural Employment



Unemployment Information (all estimates in thousands)

	Corpus Christi MSA				Texas (Actual)				United States (Actual)			
	C.L.F.	Emp.	Unemp.	Rate	C.L.F.	Emp.	Unemp.	Rate	C.L.F.	Emp.	Unemp.	Rate
Mar-15	212.9	203.1	9.8	4.6	13,087.9	12,533.3	554.6	4.2	156,318.0	147,635.0	8,682.0	5.6
Feb-15	212.6	202.7	9.9	4.7	13,114.5	12,549.6	564.9	4.3	156,213.0	147,118.0	9,095.0	5.8
Mar-14	212.3	200.8	11.5	5.4	13,073.4	12,367.9	705.5	5.4	155,627.0	145,090.0	10,537.0	6.8

Historical Unemployment Rates

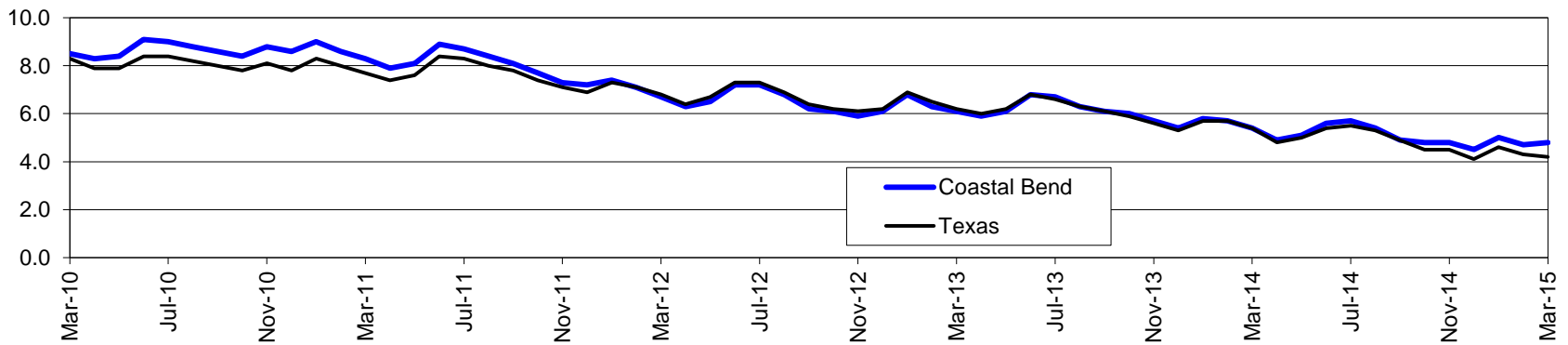


# Coastal Bend Workforce Development Area\*

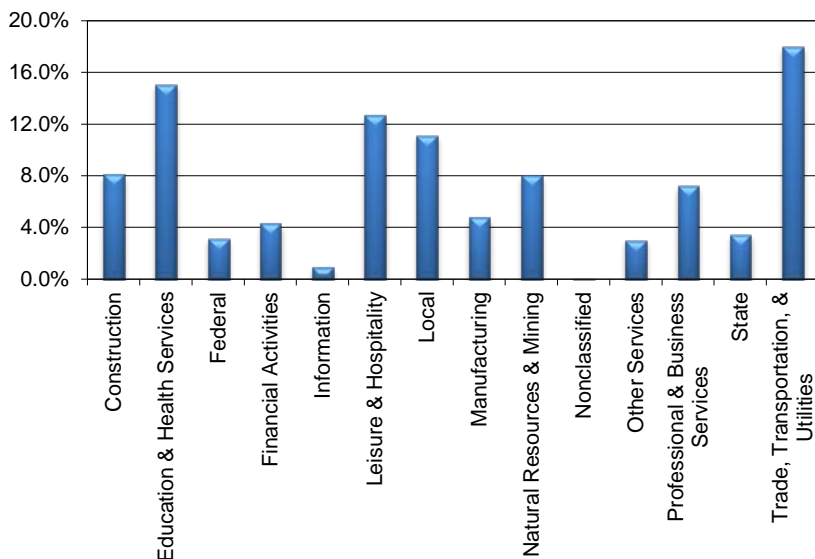
March 2015

Coastal Bend WDA					Texas				
	CLF	Employed	Unemployed	Rate		CLF	Employed	Unemployed	Rate
Mar-15	280,222	266,859	13,363	4.8	Mar-15	13,087,881	12,533,321	554,560	4.2
Feb-15	279,569	266,313	13,256	4.7	Feb-15	13,114,543	12,549,647	564,896	4.3
Mar-14	279,045	263,937	15,108	5.4	Mar-14	13,073,389	12,367,879	705,510	5.4

## Historical Unemployment Rates



## Coastal Bend WDA Industry Composition 3rd Quarter 2014



## Total WDA Claims

### Continued Claims for the Week of the 12th

	Mar-15	Feb-15	Mar-14	OTY
Continued	3,806	3,393	2,669	1,137

### Texas Unemployment Insurance Claims

#### Continued Claims for the Week of the 12th

	Mar-15	Feb-15	Mar-14	OTY
Continued	128,326	120,172	130,538	-2,212

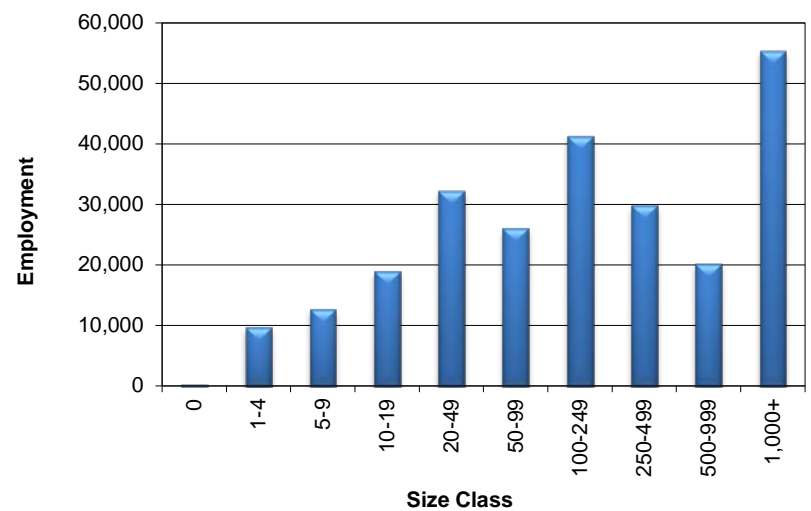
## Coastal Bend WDA Average Weekly Wage

	Coastal Bend	Texas
3rd Quarter 2014	\$846.25	\$988.00
2nd Quarter 2014	\$829.17	\$973.32
3rd Quarter 2013	\$807.96	\$952.36
Quarter Change	\$17.08	\$14.68
OTY Change	\$38.29	\$35.64

## NAICS Covered Employment Quarterly Data 3rd Quarter 2014

SUPER SECTOR	Employment	Change	
		Quarter	Year
Construction	20,120	313	1,272
Education & Health Services	37,243	33	-1,065
Federal	7,801	17	-300
Financial Activities	10,604	197	484
Information	2,373	-27	12
Leisure & Hospitality	31,236	312	1,297
Local	27,433	-1,857	-29
Manufacturing	11,843	81	322
Natural Resources & Mining	19,859	1,068	1,094
Nonclassified	29	-1	-22
Other Services	7,537	-57	183
Professional & Business Services	17,901	337	442
State	8,516	-764	-522
Trade, Transportation, & Utilities	44,568	434	1,362
<b>TOTAL</b>	<b>247,063</b>	<b>86</b>	<b>4,530</b>

## Size Class Employment Composition 3rd Quarter 2014



\*Counties in WDA: Aransas, Bee, Brooks, Duval, Jim Wells, Kenedy, Kleberg, Live Oak, McMullen, Nueces, Refugio, & San Patricio