

# Coastal Bend Workforce Area

(Not Seasonally Adjusted Unemployment Rates by WDA, MSA, & County)

Area	Area Type	Latest Monthly Data April 2015						Previous Monthly Data March 2015				Year Ago April 2014			
		Labor Force	Employment	Unemployment	Rate	M+-	Y+-	Labor Force	Employment	Unemployment	Rate	Labor Force	Employment	Unemployment	Rate
United States	Nation	157,072,000	148,523,000	8,549,000	5.4	0.1	-0.8	156,906,000	148,331,000	8,575,000	5.5	155,420,000	145,724,000	9,696,000	6.2
Texas	State	13,154,897	12,596,728	558,169	4.2	0.0	-1.0	13,173,527	12,614,626	558,901	4.2	13,052,718	12,372,040	680,678	5.2
Corpus Christi	MSA	214,570	204,932	9,638	4.5	-0.1	-0.4	212,962	203,181	9,781	4.6	210,815	200,498	10,317	4.9
Coastal Bend	WDA	282,162	268,773	13,389	4.7	-0.1	-0.2	280,291	266,938	13,353	4.8	277,404	263,902	13,502	4.9
Aransas	County	10,293	9,840	453	4.4	-0.3	-0.5	10,230	9,751	479	4.7	10,135	9,640	495	4.9
Bee	County	11,021	10,426	595	5.4	0.1	0.2	10,963	10,380	583	5.3	11,006	10,429	577	5.2
Brooks	County	2,683	2,463	220	8.2	0.5	1.5	2,673	2,466	207	7.7	2,708	2,532	176	6.5
Duval	County	5,846	5,441	405	6.9	0.6	1.6	5,755	5,392	363	6.3	5,656	5,357	299	5.3
Jim Wells	County	20,726	19,372	1,354	6.5	0.6	1.6	20,531	19,318	1,213	5.9	20,183	19,190	993	4.9
Kenedy	County	372	364	8	2.2	0.2	1.0	405	397	8	2.0	345	334	11	3.2
Kleberg	County	15,480	14,710	770	5.0	-0.1	0.1	15,528	14,742	786	5.1	15,667	14,902	765	4.9
Live Oak	County	6,410	6,201	209	3.3	-0.1	0.1	6,419	6,199	220	3.4	6,217	6,018	199	3.2
McMullen	County	1,345	1,327	18	1.3	-0.4	0.1	1,317	1,295	22	1.7	1,130	1,114	16	1.4
Nueces	County	172,685	165,344	7,341	4.3	0.0	-0.4	171,304	163,879	7,425	4.3	169,719	161,686	8,033	4.7
Refugio	County	3,709	3,537	172	4.6	0.1	0.5	3,738	3,568	170	4.5	3,677	3,528	149	4.1
San Patricio	County	31,592	29,748	1,844	5.8	-0.2	0.0	31,428	29,551	1,877	6.0	30,961	29,172	1,789	5.8

(M+-) Change in unemployment rate from last month (Increase) (Decrease)

(Y+-) Change in unemployment rate from last year (Increase) (Decrease)

- Earnings for all occupations Coastal Bend, expressed as hourly rate (TWC):

Coastal Bend	All Occupations-	Average \$18.35/hr.	Entry level \$8.58/hr.	Experienced workers \$23.24/hr.	Top 10% \$33.56/hr.
Texas	All Occupations-	Average \$20.97/hr.	Entry level \$8.88/hr.	Experienced workers \$ 27.02/hr.	Top 10% \$39.64/hr.

- Educational Attainment for population 25 years of age and older - Corpus Christi (Census American Fact Finder/American Community Survey):

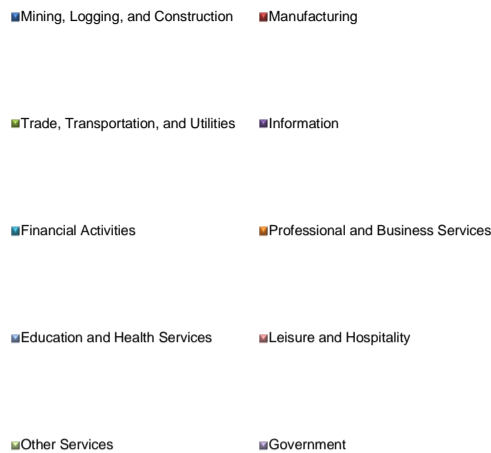
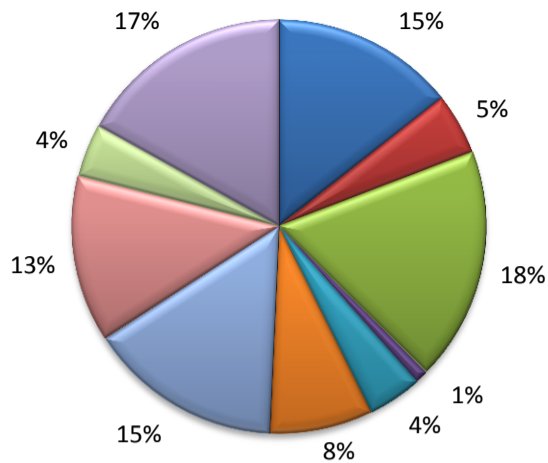
Less than 9 <sup>th</sup> grade	8.7%	12 <sup>th</sup> grade & GED	27.7%	Associates degree	7.0%	Graduate or Professional degrees	8.4%
9 <sup>th</sup> thru 11 <sup>th</sup> grade	9.3%	Some College	25.1%	Bachelors degree	13.8%		

- Median earnings Corpus Christi by education for persons 25 years of age & up (Census AFF/ACS): \$27,211 (\$36,380 male/ \$22,328 female)

Less than High School	\$15,437	Some College or Associates	\$28,739	Graduate or Professional	\$56,681
High School & GED	\$26,818	Bachelor's	\$44,078		

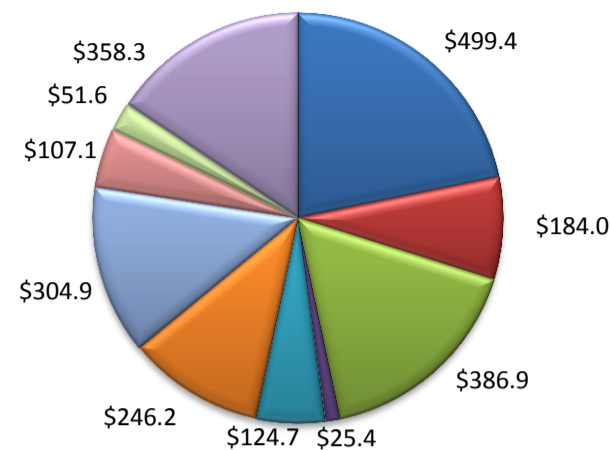
(Aransas, Nueces, San Patricio)

Industry Composition



Wages by Industry (in millions)

4th Quarter 2014



Employment by Industry

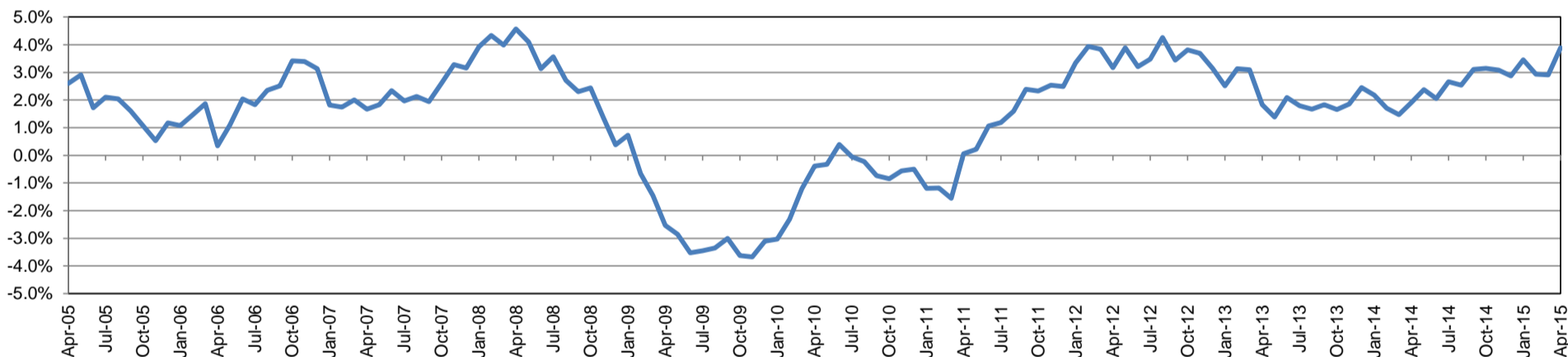
	Apr-15	Mar-15	Apr-14	Monthly Change		Annual Change	
				Actual	%	Actual	%
Total Nonfarm	200,300	198,200	192,800	2,100	1.1%	7,500	3.9%
Mining, Logging, and Construction	28,800	28,600	25,500	200	0.7%	3,300	12.9%
Manufacturing	9,600	9,700	9,800	-100	-1.0%	-200	-2.0%
Trade, Transportation, and Utilities	36,500	35,900	35,000	600	1.7%	1,500	4.3%
Information	2,100	2,100	2,100	0	0.0%	0	0.0%
Financial Activities	8,500	8,500	8,200	0	0.0%	300	3.7%
Professional and Business Services	16,100	15,400	15,800	700	4.6%	300	1.9%
Education and Health Services	30,300	30,200	29,400	100	0.3%	900	3.1%
Leisure and Hospitality	26,200	25,800	24,900	400	1.6%	1,300	5.2%
Other Services	8,300	8,300	8,200	0	0.0%	100	1.2%
Government	33,900	33,700	33,900	200	0.6%	0	0.0%

Industry Size Class

December 2014

Size Class	Employees per firm	Number of Firms	Employment in Size Class	% Total Employment
9	1000+	18	42,145	22.0%
8	500-999	23	16,466	8.6%
7	250-499	58	20,238	10.5%
6	100-249	223	33,997	17.7%
5	50-99	321	22,093	11.5%
4	20-49	817	24,732	12.9%
3	10-19	1,052	14,406	7.5%
2	5-9	1,526	10,188	5.3%
1	1-4	3,689	7,565	3.9%
0	0	525	0	0.0%
Total		8,252	191,830	100.0%

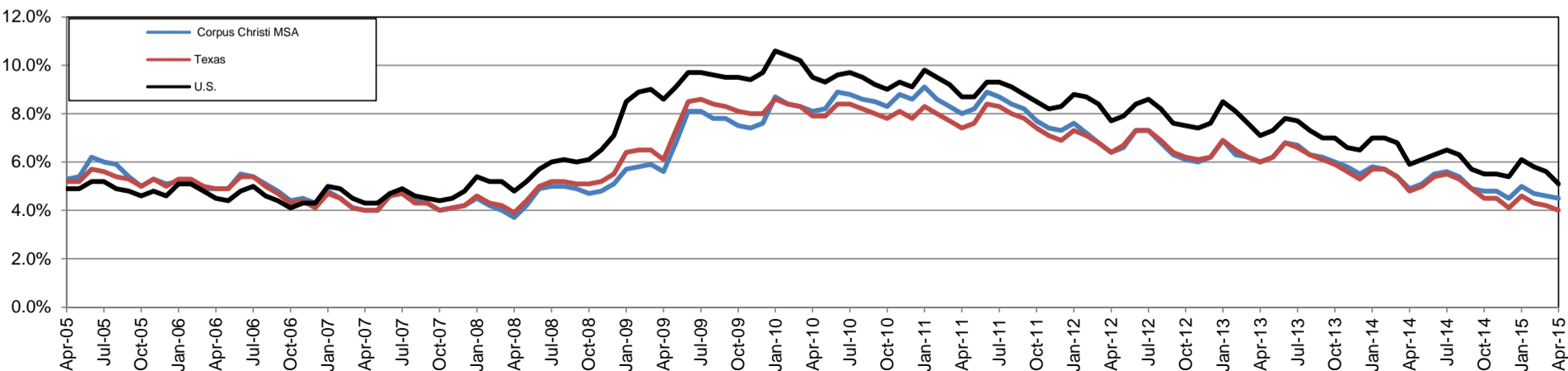
Annual Growth Rate for Total Nonagricultural Employment



Unemployment Information (all estimates in thousands)

	Corpus Christi MSA				Texas (Actual)				United States (Actual)			
	C.L.F.	Emp.	Unemp.	Rate	C.L.F.	Emp.	Unemp.	Rate	C.L.F.	Emp.	Unemp.	Rate
Apr-15	214.5	204.9	9.6	4.5	13,094.9	12,572.9	522.0	4.0	156,554.0	148,587.0	7,966.0	5.1
Mar-15	213.0	203.2	9.8	4.6	13,088.6	12,534.2	554.4	4.2	156,318.0	147,635.0	8,682.0	5.6
Apr-14	210.8	200.5	10.3	4.9	13,049.1	12,426.5	622.6	4.8	154,845.0	145,767.0	9,079.0	5.9

Historical Unemployment Rates

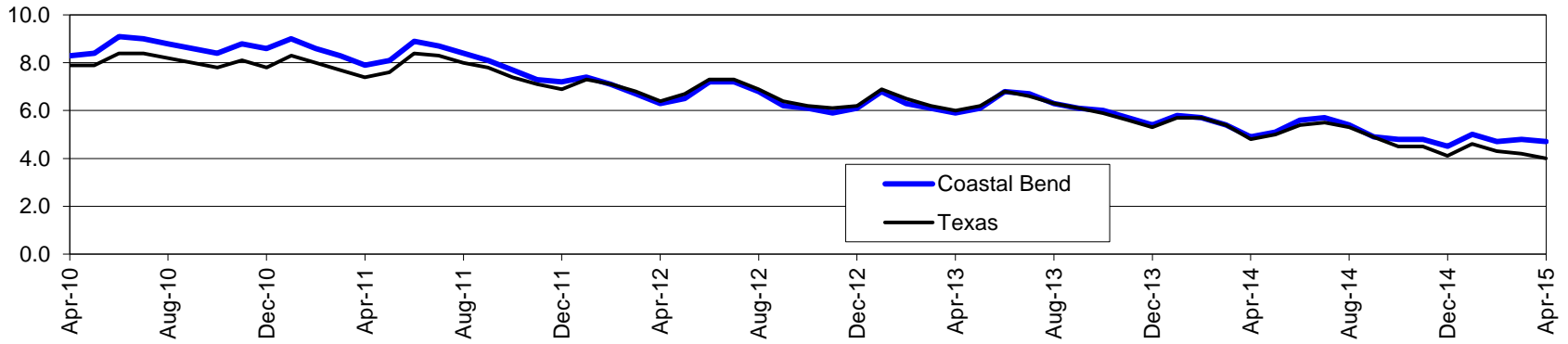


# Coastal Bend Workforce Development Area\*

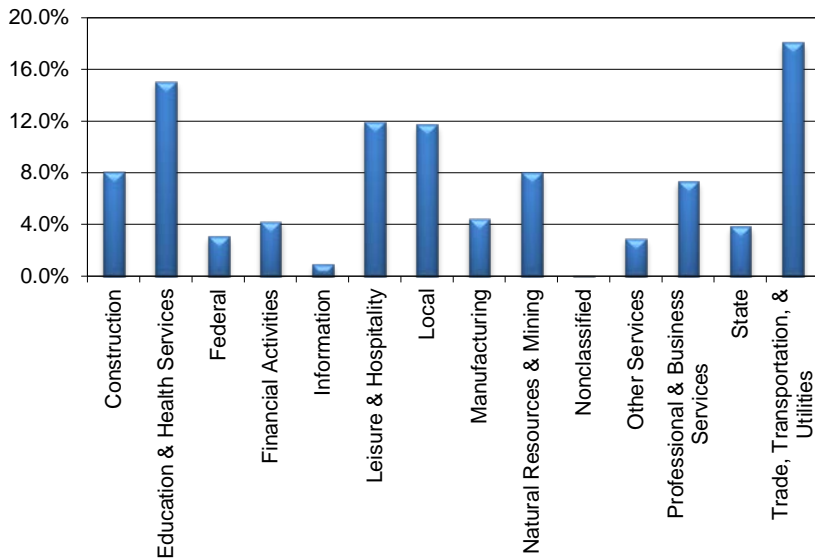
April 2015

Coastal Bend WDA					Texas				
	CLF	Employed	Unemployed	Rate		CLF	Employed	Unemployed	Rate
Apr-15	282,162	268,773	13,389	4.7	Apr-15	13,094,817	12,572,865	521,952	4.0
Mar-15	280,291	266,938	13,353	4.8	Mar-15	13,088,608	12,534,208	554,400	4.2
Apr-14	277,404	263,902	13,502	4.9	Apr-14	13,049,127	12,426,530	622,597	4.8

## Historical Unemployment Rates



## Coastal Bend WDA Industry Composition 4th Quarter 2014



## Total WDA Claims

### Continued Claims for the Week of the 12th

	Apr-15	Mar-15	Apr-14	OTY
Continued	4,397	3,835	2,676	1,721

### Texas Unemployment Insurance Claims

#### Continued Claims for the Week of the 12th

	Apr-15	Mar-15	Apr-14	OTY
Continued	135,178	129,728	123,459	11,719

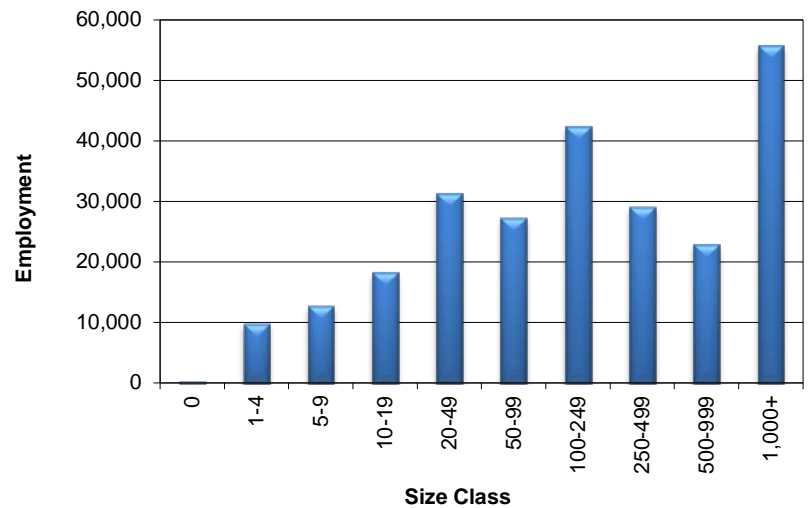
## Coastal Bend WDA Average Weekly Wage

	Coastal Bend	Texas
4th Quarter 2014	\$911.77	\$1,071.29
3rd Quarter 2014	\$845.95	\$987.96
4th Quarter 2013	\$860.03	\$1,026.57
Quarter Change	\$65.82	\$83.33
OTY Change	\$51.74	\$44.72

## NAICS Covered Employment Quarterly Data 4th Quarter 2014

SUPER SECTOR	Employment	Change	
		Quarter	Year
Construction	20,303	225	687
Education & Health Services	37,712	463	-355
Federal	7,741	-60	-262
Financial Activities	10,694	102	608
Information	2,336	-35	-60
Leisure & Hospitality	29,978	-1,360	979
Local	29,365	1,940	-83
Manufacturing	11,158	-703	-391
Natural Resources & Mining	20,174	260	1,317
Nonclassified	38	3	-4
Other Services	7,388	-148	122
Professional & Business Services	18,447	550	877
State	9,728	1,212	273
Trade, Transportation, & Utilities	45,267	696	1,457
<b>TOTAL</b>	<b>250,329</b>	<b>3,145</b>	<b>5,165</b>

## Size Class Employment Composition 4th Quarter 2014



\*Counties in WDA: Aransas, Bee, Brooks, Duval, Jim Wells, Kenedy, Kleberg, Live Oak, McMullen, Nueces, Refugio, & San Patricio