

Coastal Bend Workforce Area

(Not Seasonally Adjusted Unemployment Rates by WDA, MSA, & County)

Area	Area Type	Latest Monthly Data September 2016						Previous Monthly Data August 2016				Year Ago September 2015			
		Labor Force	Employment	Unemployment	Rate	M+-	Y+-	Labor Force	Employment	Unemployment	Rate	Labor Force	Employment	Unemployment	Rate
United States	Nation	159,907,000	151,698,000	7,939,000	5.0	0.1	-0.1	159,463,000	151,614,000	7,849,000	4.9	156,867,000	148,942,000	7,925,000	5.1
Texas	State	13,355,743	12,718,578	637,165	4.8	0.1	0.4	13,311,681	12,689,954	621,727	4.7	13,090,365	12,502,479	587,886	4.4
Corpus Christi	MSA	212,632	199,334	13,298	6.3	0.1	1.0	212,081	198,952	13,129	6.2	207,202	196,302	10,900	5.3
Coastal Bend	WDA	272,430	253,874	18,556	6.8	-0.1	1.1	271,689	253,073	18,616	6.9	268,468	253,049	15,419	5.7
Aransas	County	10,250	9,632	618	6.0	0.1	0.9	10,257	9,655	602	5.9	10,059	9,541	518	5.1
Bee	County	10,587	9,741	846	8.0	-0.5	1.6	10,441	9,556	885	8.5	10,403	9,737	666	6.4
Brooks	County	2,440	2,148	292	12.0	-0.5	0.5	2,443	2,137	306	12.5	2,556	2,263	293	11.5
Duval	County	4,898	4,315	583	11.9	-0.2	2.6	4,878	4,288	590	12.1	5,103	4,626	477	9.3
Jim Wells	County	17,883	15,940	1,943	10.9	-0.4	1.7	17,959	15,928	2,031	11.3	18,915	17,179	1,736	9.2
Kenedy	County	216	205	11	5.1	-0.3	1.9	221	209	12	5.4	253	245	8	3.2
Kleberg	County	13,977	12,953	1,024	7.3	-0.6	1.0	13,881	12,782	1,099	7.9	14,040	13,157	883	6.3
Live Oak	County	5,792	5,490	302	5.2	-0.3	0.9	5,783	5,467	316	5.5	5,776	5,528	248	4.3
McMullen	County	887	869	18	2.0	-0.2	-0.4	900	880	20	2.2	922	900	22	2.4
Nueces	County	171,027	160,835	10,192	6.0	0.1	0.9	170,595	160,497	10,098	5.9	166,755	158,307	8,448	5.1
Refugio	County	3,118	2,879	239	7.7	0.3	2.1	3,102	2,874	228	7.4	3,298	3,112	186	5.6
San Patricio	County	31,355	28,867	2,488	7.9	0.1	1.5	31,229	28,800	2,429	7.8	30,388	28,454	1,934	6.4

(M+-) Change in unemployment rate from last month (Increase) (Decrease)

(Y+-) Change in unemployment rate from last year (Increase) (Decrease)

- Earnings for all occupations Coastal Bend, expressed as hourly rate (TWC):

Coastal Bend	All Occupations-	Average \$18.35/hr.	Entry level \$8.58/hr.	Experienced workers \$23.24/hr.	Top 10% \$33.56/hr.
Texas	All Occupations-	Average \$20.97/hr.	Entry level \$8.88/hr.	Experienced workers \$ 27.02/hr.	Top 10% \$39.64/hr.

- Educational Attainment for population 25 years of age and older - Corpus Christi (Census American Fact Finder/American Community Survey):

Less than 9th grade	8.7%	12th grade & GED	27.7%	Associates degree	7.0%	Graduate or Professional degrees	8.4%
9th thru 11th grade	9.3%	Some College	25.1%	Bachelors degree	13.8%		

- Median earnings Corpus Christi by education for persons 25 years of age & up (Census AFF/ACS): **\$27,211** (\$36,380 male/ \$22,328 female)

Less than High School	\$15,437	Some College or Associates	\$28,739	Graduate or Professional	\$56,681
High School & GED	\$26,818	Bachelor's	\$44,078		

Coastal Bend Workforce Development Area

September 2016



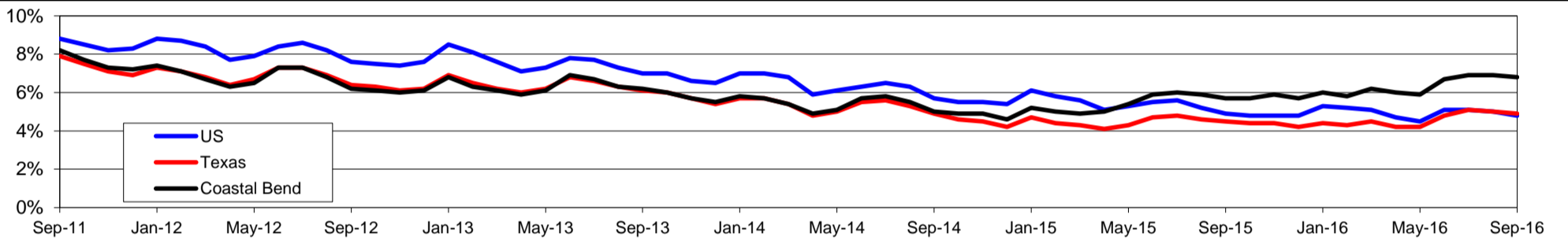
WDA Labor Force Statistics				
	Sep-16	Aug-16	Sep-15	OTY
CLF	272,430	271,689	268,468	3,962
Employed	253,874	253,073	253,049	825
Unemployed	18,556	18,616	15,419	3,137
Rate	6.8%	6.9%	5.7%	1.1%

Texas Labor Force Statistics				
	Sep-16	Aug-16	Sep-15	OTY
CLF	13,416,799	13,378,431	13,067,230	349,569
Employed	12,754,685	12,709,461	12,480,453	274,232
Unemployed	662,114	668,970	586,777	75,337
Rate	4.9%	5.0%	4.5%	0.4%

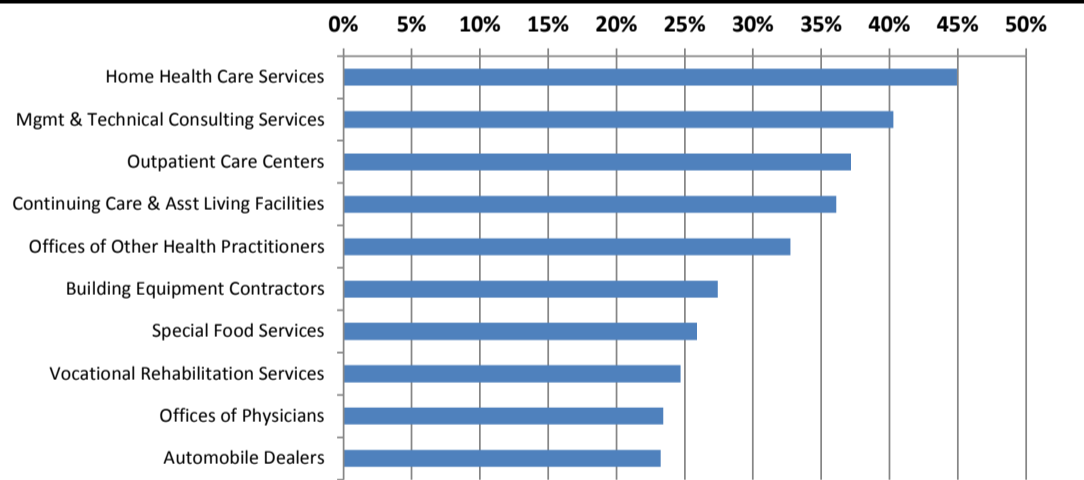
US Labor Force Statistics				
	Sep-16	Aug-16	Sep-15	OTY
CLF	159,636,000	159,800,000	156,607,000	3,029,000
Employed	151,977,000	151,804,000	148,980,000	2,997,000
Unemployed	7,658,000	7,996,000	7,628,000	30,000
Rate	4.8%	5.0%	4.9%	-0.1%

Continued Claims for the Week of the 12th				
	Sep-16	Aug-16	Sep-15	OTY
WDA	4,089	4,581	4,391	-302
Texas	132,202	148,897	134,736	-2,534

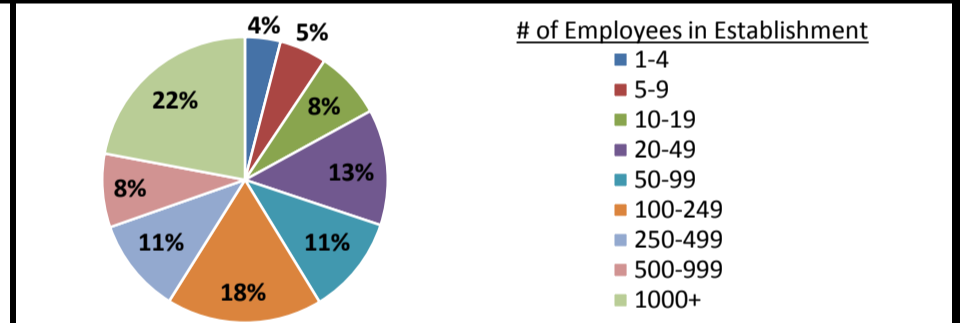
Historical Unemployment Rates



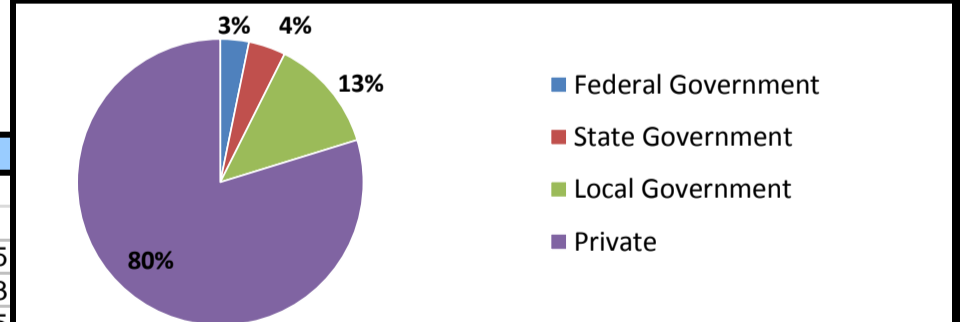
Projected Fastest Growing Industries in WDA (% growth 2014-2024)



Employment by Size Class (1st Quarter 2016)



Employment by Ownership (1st Quarter 2016)



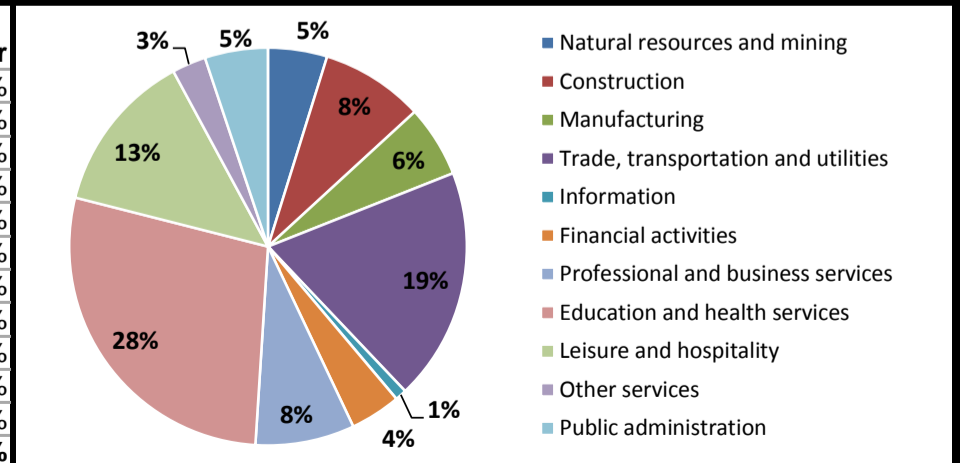
Average Weekly Wage (1st Quarter 2016)

	Q1 2016	Q4 2015	Q1 2015	Change	
				Quarter	Year
WDA	\$822	\$897	\$867	-\$75	-\$45
Texas	\$1,066	\$1,099	\$1,089	-\$33	-\$23
US	\$1,043	\$1,083	\$1,048	-\$40	-\$5

Employment by Industry (1st Quarter 2016, Percent Change)

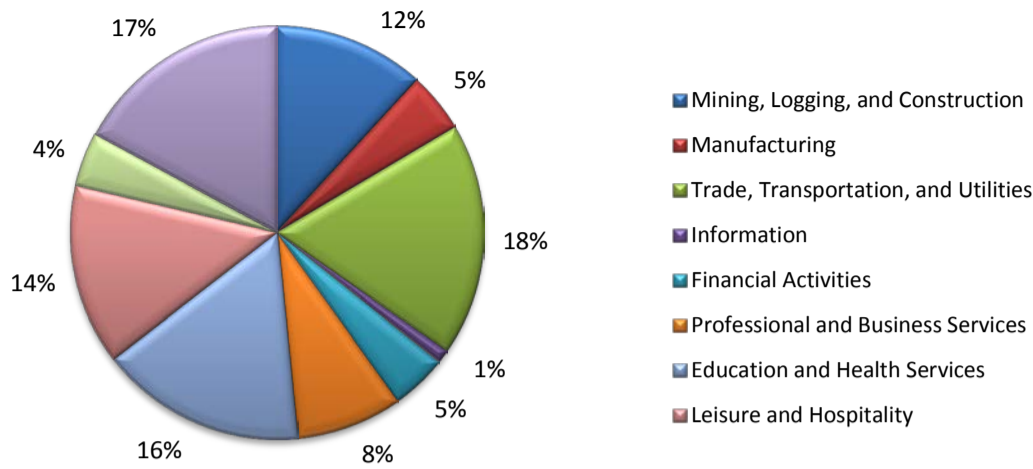
Industry	Employment	% of total	% Change	
			Quarter	Year
Natural resources and mining	11,201	4.8%	-13.8%	-37.4%
Construction	19,575	8.4%	-4.4%	-5.9%
Manufacturing	13,556	5.8%	-3.6%	-8.4%
Trade, transportation and utilities	44,132	18.9%	-5.1%	-5.5%
Information	2,186	0.9%	-10.8%	-4.2%
Financial activities	9,577	4.1%	-8.2%	-9.2%
Professional and business services	18,828	8.1%	-1.1%	-1.0%
Education and health services	65,223	27.9%	-0.8%	2.2%
Leisure and hospitality	30,696	13.2%	-1.9%	0.0%
Other services	6,437	2.8%	-5.7%	-10.5%
Public administration	11,962	5.1%	0.2%	3.1%
Total	233,373	100.0%	-3.5%	-4.9%

Employment by Industry (1st Quarter 2016)



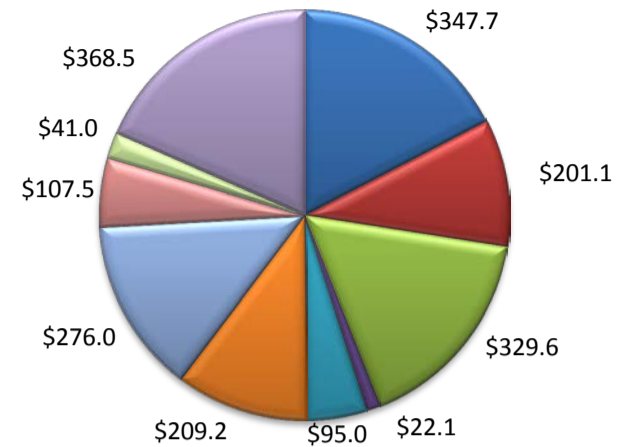
(Aransas, Nueces, San Patricio)

Industry Composition



Wages by Industry (in millions)

1st Quarter 2016



Employment by Industry

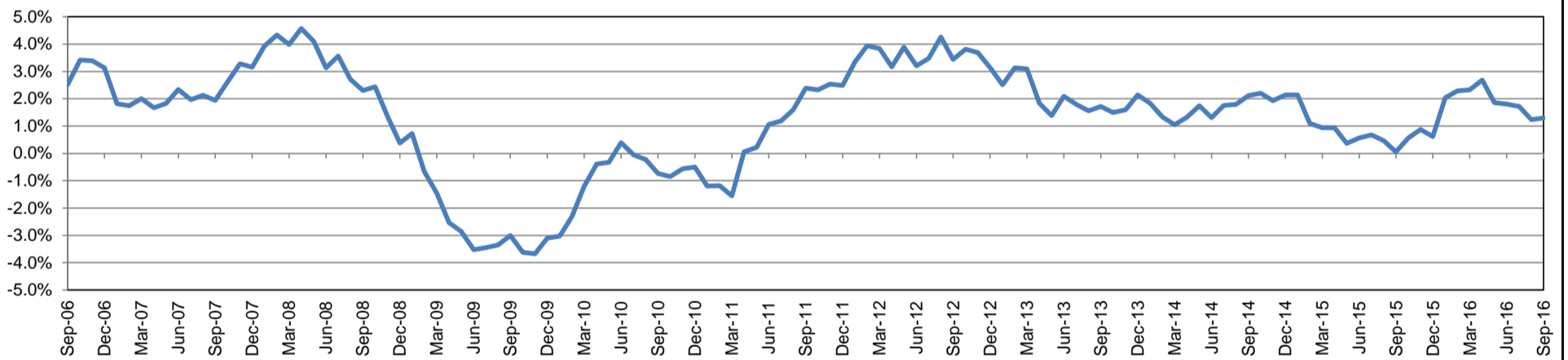
	Sep-16	Aug-16	Sep-15	Monthly Change		Annual Change	
				Actual	%	Actual	%
Total Nonfarm	196,200	195,900	193,700	300	0.2%	2,500	1.3%
Mining, Logging, and Construction	23,100	23,300	23,500	-200	-0.9%	-400	-1.7%
Manufacturing	9,200	9,200	9,300	0	0.0%	-100	-1.1%
Trade, Transportation, and Utilities	35,800	35,700	35,800	100	0.3%	0	0.0%
Information	2,000	2,000	2,000	0	0.0%	0	0.0%
Financial Activities	8,700	8,800	8,500	-100	-1.1%	200	2.4%
Professional and Business Services	16,200	16,400	17,000	-200	-1.2%	-800	-4.7%
Education and Health Services	31,600	32,000	29,800	-400	-1.3%	1,800	6.0%
Leisure and Hospitality	27,700	28,100	26,500	-400	-1.4%	1,200	4.5%
Other Services	8,300	8,300	8,100	0	0.0%	200	2.5%
Government	33,600	32,100	33,200	1,500	4.7%	400	1.2%

Industry Size Class

March 2016

Size Class	Employees per firm	Number of Firms	Employment in Size Class	% Total Employment
9	1000+	18	41,172	22.5%
8	500-999	19	13,332	7.3%
7	250-499	46	16,198	8.9%
6	100-249	225	34,027	18.6%
5	50-99	309	21,121	11.5%
4	20-49	837	25,482	13.9%
3	10-19	1,054	14,441	7.9%
2	5-9	1,508	9,989	5.5%
1	1-4	3,442	7,151	3.9%
0	0	641	0	0.0%
Total		8,099	182,913	100.0%

Annual Growth Rate for Total Nonagricultural Employment



Unemployment Information (all estimates in thousands)

	Corpus Christi MSA				Texas (Actual)				United States (Actual)			
	C.L.F.	Emp.	Unemp.	Rate	C.L.F.	Emp.	Unemp.	Rate	C.L.F.	Emp.	Unemp.	Rate
Sep-16	212.6	199.3	13.3	6.3	13,416.8	12,754.7	662.1	4.9	159,636.0	151,977.0	7,658.0	4.8
Aug-16	212.1	199.0	13.1	6.2	13,378.4	12,709.5	669.0	5.0	159,800.0	151,804.0	7,996.0	5.0
Sep-15	207.2	196.3	10.9	5.3	13,067.2	12,480.5	586.8	4.5	156,607.0	148,980.0	7,628.0	4.9

Historical Unemployment Rates

