

Coastal Bend Workforce Area

(Not Seasonally Adjusted Unemployment Rates by WDA, MSA, & County)

Area	Area Type	Latest Monthly Data September 2015						Previous Monthly Data August 2015				Year Ago September 2014			
		Labor Force	Employment	Unemployment	Rate	M+-	Y+-	Labor Force	Employment	Unemployment	Rate	Labor Force	Employment	Unemployment	Rate
United States	Nation	156,715,000	148,800,000	7,915,000	5.1	0.0	-0.8	157,065,000	149,036,000	8,029,000	5.1	155,845,000	146,607,000	9,237,000	5.9
Texas	State	13,010,043	12,465,308	544,735	4.2	0.1	-0.6	13,012,389	12,474,419	537,970	4.1	13,131,438	12,501,664	629,774	4.8
Corpus Christi	MSA	211,240	200,650	10,590	5.0	0.0	0.1	209,574	199,001	10,573	5.0	212,946	202,469	10,477	4.9
Coastal Bend	WDA	278,529	263,542	14,987	5.4	0.0	0.5	276,379	261,348	15,031	5.4	279,261	265,513	13,748	4.9
Aransas	County	10,119	9,617	502	5.0	0.1	-0.2	10,019	9,527	492	4.9	10,269	9,737	532	5.2
Bee	County	10,759	10,109	650	6.0	-0.3	0.5	10,683	10,007	676	6.3	11,030	10,422	608	5.5
Brooks	County	2,734	2,452	282	10.3	-1.0	3.2	2,753	2,443	310	11.3	2,649	2,461	188	7.1
Duval	County	5,829	5,363	466	8.0	0.6	2.7	5,741	5,314	427	7.4	5,655	5,355	300	5.3
Jim Wells	County	20,919	19,228	1,691	8.1	0.0	3.2	20,883	19,186	1,697	8.1	20,156	19,174	982	4.9
Kenedy	County	362	354	8	2.2	-0.1	-0.5	354	346	8	2.3	339	330	9	2.7
Kleberg	County	15,106	14,251	855	5.7	-0.4	0.5	14,868	13,966	902	6.1	15,376	14,576	800	5.2
Live Oak	County	6,673	6,431	242	3.6	0.1	0.3	6,619	6,385	234	3.5	6,369	6,160	209	3.3
McMullen	County	1,274	1,253	21	1.6	0.0	-0.2	1,275	1,255	20	1.6	1,121	1,101	20	1.8
Nueces	County	170,140	161,932	8,208	4.8	0.0	0.0	168,774	160,624	8,150	4.8	171,510	163,317	8,193	4.8
Refugio	County	3,633	3,451	182	5.0	-0.1	0.7	3,629	3,445	184	5.1	3,620	3,465	155	4.3
San Patricio	County	30,981	29,101	1,880	6.1	-0.2	0.5	30,781	28,850	1,931	6.3	31,167	29,415	1,752	5.6

(M+-) Change in unemployment rate from last month (Increase) (Decrease)

(Y+-) Change in unemployment rate from last year (Increase) (Decrease)

- Earnings for all occupations Coastal Bend, expressed as hourly rate (TWC):

Coastal Bend	All Occupations-	Average \$18.35/hr.	Entry level \$8.58/hr.	Experienced workers \$23.24/hr.	Top 10% \$33.56/hr.
Texas	All Occupations-	Average \$20.97/hr.	Entry level \$8.88/hr.	Experienced workers \$ 27.02/hr.	Top 10% \$39.64/hr.

- Educational Attainment for population 25 years of age and older - Corpus Christi (Census American Fact Finder/American Community Survey):

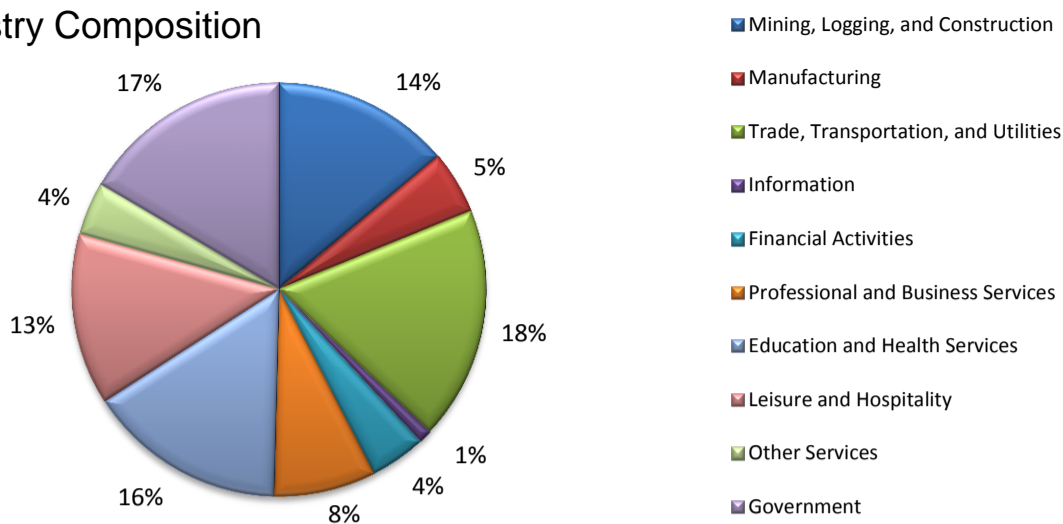
Less than 9 th grade	8.7%	12 th grade & GED	27.7%	Associates degree	7.0%	Graduate or Professional degrees	8.4%
9 th thru 11 th grade	9.3%	Some College	25.1%	Bachelors degree	13.8%		

- Median earnings Corpus Christi by education for persons 25 years of age & up (Census AFF/ACS): **\$27,211** (\$36,380 male/ \$22,328 female)

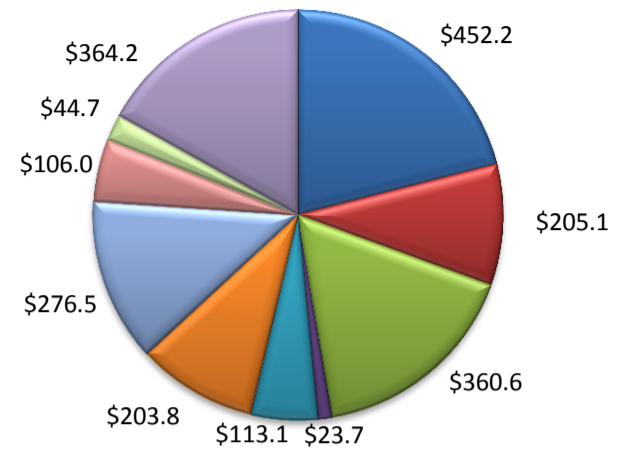
Less than High School	\$15,437	Some College or Associates	\$28,739	Graduate or Professional	\$56,681
High School & GED	\$26,818	Bachelor's	\$44,078		

(Aransas, Nueces, San Patricio)

Industry Composition



Wages by Industry (in millions)
1st Quarter 2015



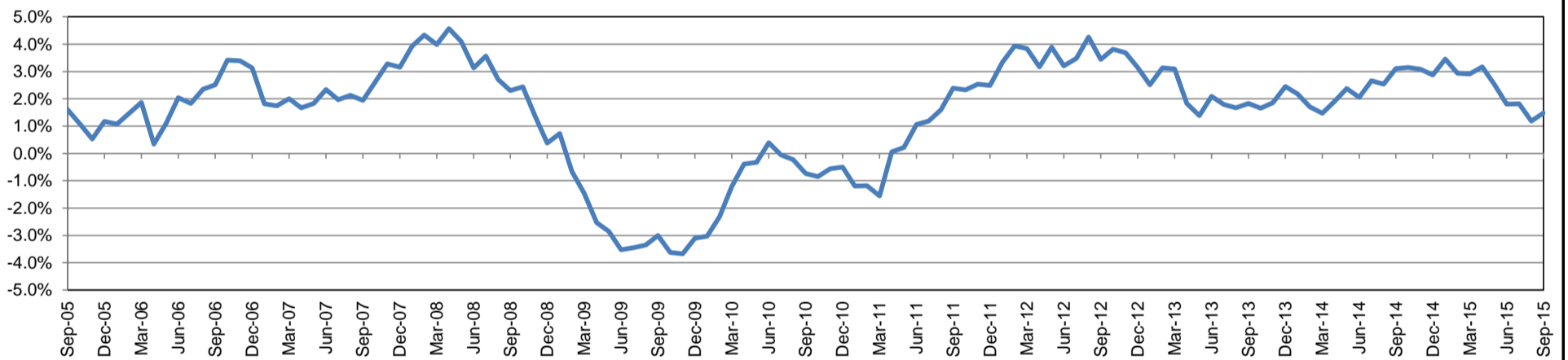
Employment by Industry

	Sep-15	Aug-15	Sep-14	Monthly Change		Annual Change	
				Actual	%	Actual	%
Total Nonfarm	198,600	196,500	195,700	2,100	1.1%	2,900	1.5%
Mining, Logging, and Construction	27,600	27,100	26,400	500	1.9%	1,200	4.6%
Manufacturing	9,800	9,700	9,900	100	1.0%	-100	-1.0%
Trade, Transportation, and Utilities	36,200	35,900	35,700	300	0.8%	500	1.4%
Information	2,100	2,100	2,100	0	0.0%	0	0.0%
Financial Activities	8,600	8,600	8,500	0	0.0%	100	1.2%
Professional and Business Services	15,800	15,700	16,500	100	0.6%	-700	-4.2%
Education and Health Services	30,800	30,600	29,800	200	0.7%	1,000	3.4%
Leisure and Hospitality	26,600	27,100	25,700	-500	-1.9%	900	3.5%
Other Services	8,300	8,400	8,300	-100	-1.2%	0	0.0%
Government	32,800	31,300	32,800	1,500	4.8%	0	0.0%

Industry Size Class

Size Class	Employees per firm	Number of Firms	March 2015		
			Employment in Size Class	% Total Employment	
9	1000+	19	42,864	22.6%	
8	500-999	20	14,579	7.7%	
7	250-499	58	19,768	10.4%	
6	100-249	215	33,098	17.5%	
5	50-99	310	21,606	11.4%	
4	20-49	829	25,390	13.4%	
3	10-19	1,096	14,935	7.9%	
2	5-9	1,525	10,041	5.3%	
1	1-4	3,557	7,320	3.9%	
0	0	650	0	0.0%	
Total			8,279	189,601	100.0%

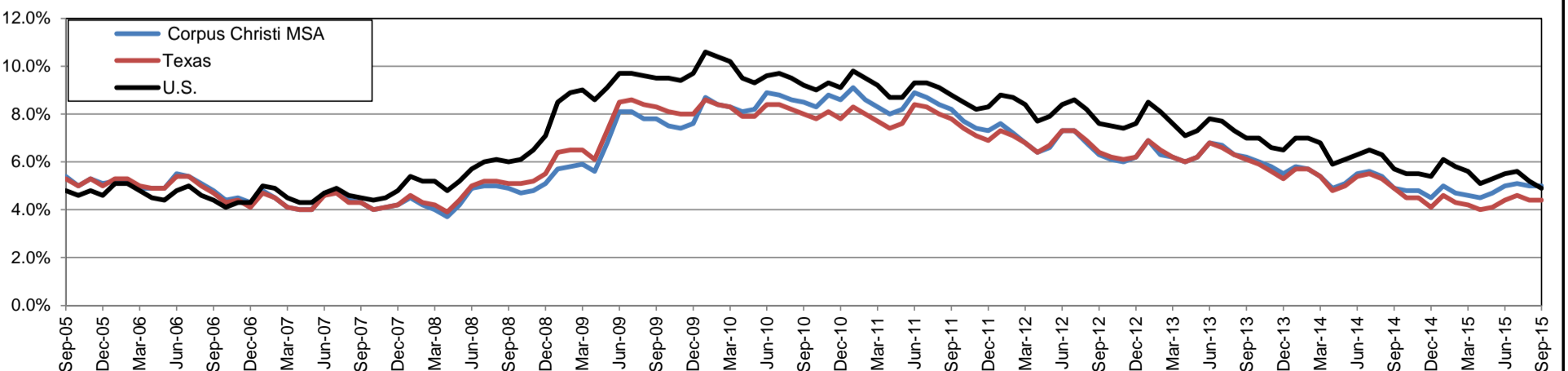
Annual Growth Rate for Total Nonagricultural Employment



Unemployment Information (all estimates in thousands)

	Corpus Christi MSA				Texas (Actual)				United States (Actual)			
	C.L.F.	Emp.	Unemp.	Rate	C.L.F.	Emp.	Unemp.	Rate	C.L.F.	Emp.	Unemp.	Rate
Sep-15	211.2	200.7	10.6	5.0	13,045.6	12,477.6	568.0	4.4	156,607.0	148,980.0	7,628.0	4.9
Aug-15	209.6	199.0	10.6	5.0	13,030.4	12,460.9	569.6	4.4	157,390.0	149,228.0	8,162.0	5.2
Sep-14	212.9	202.5	10.5	4.9	13,144.7	12,506.3	638.4	4.9	155,903.0	146,941.0	8,962.0	5.7

Historical Unemployment Rates

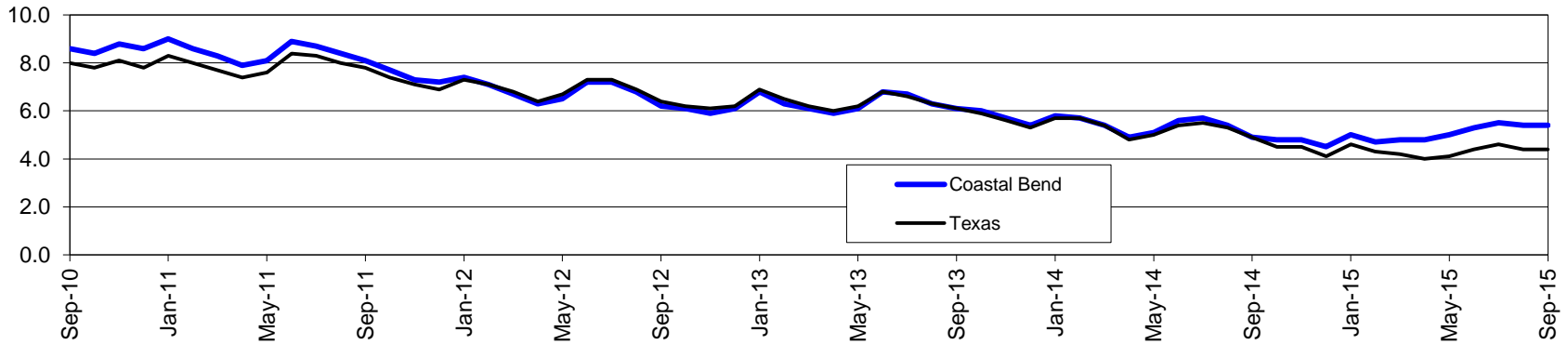


Coastal Bend Workforce Development Area*

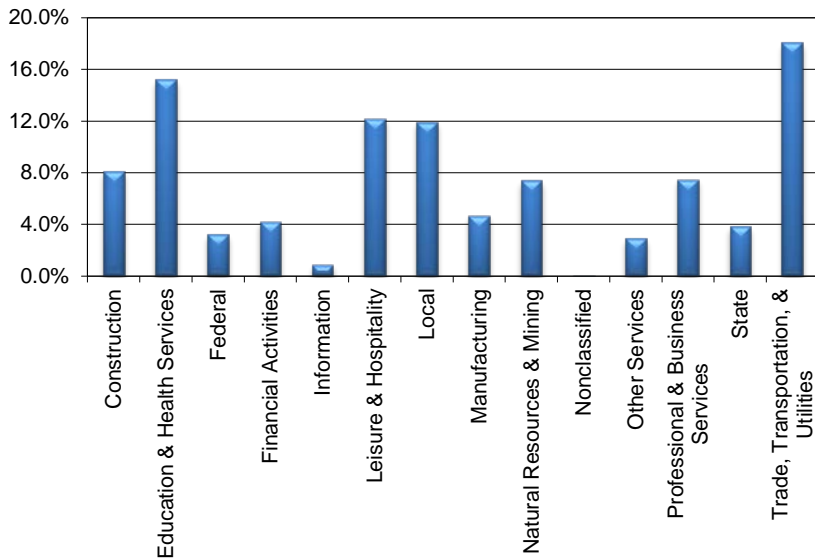
September 2015

Coastal Bend WDA					Texas				
	CLF	Employed	Unemployed	Rate		CLF	Employed	Unemployed	Rate
Sep-15	278,529	263,542	14,987	5.4	Sep-15	13,045,613	12,477,636	567,977	4.4
Aug-15	276,379	261,348	15,031	5.4	Aug-15	13,030,445	12,460,858	569,587	4.4
Sep-14	279,261	265,513	13,748	4.9	Sep-14	13,144,682	12,506,266	638,416	4.9

Historical Unemployment Rates



Coastal Bend WDA Industry Composition 1st Quarter 2015



Total WDA Claims

Continued Claims for the Week of the 12th

	Sep-15	Aug-15	Sep-14	OTY
Continued	4,370	4,693	2,212	2,158

Texas Unemployment Insurance Claims

Continued Claims for the Week of the 12th

	Sep-15	Aug-15	Sep-14	OTY
Continued	133,680	144,204	105,452	28,228

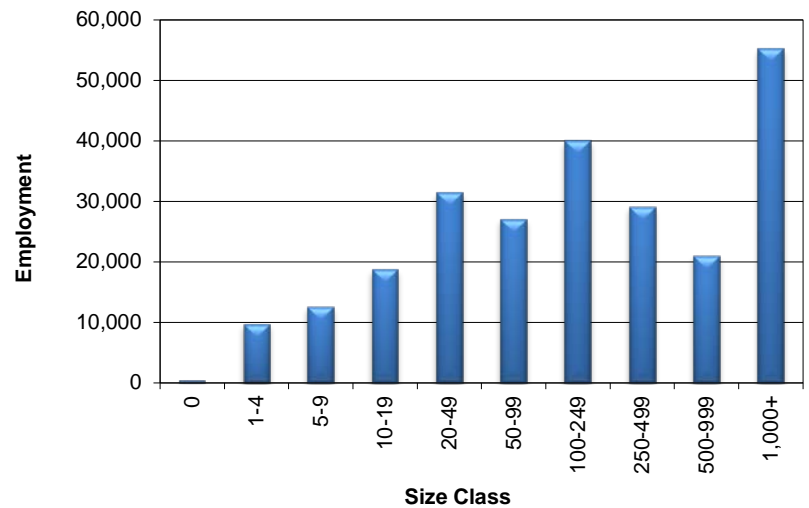
Coastal Bend WDA Average Weekly Wage

	Coastal Bend	Texas
1st Quarter 2015	\$867.84	\$1,089.18
4th Quarter 2014	\$913.85	\$1,070.14
1st Quarter 2014	\$855.01	\$1,062.09
Quarter Change	-\$46.01	\$19.04
OTY Change	\$12.83	\$27.09

NAICS Covered Employment Quarterly Data 1st Quarter 2015

SUPER SECTOR	Employment	Change	
		Quarter	Year
Construction	19,828	-880	62
Education & Health Services	37,256	-424	183
Federal	7,800	59	32
Financial Activities	10,410	-283	300
Information	2,128	-205	-223
Leisure & Hospitality	29,859	-126	840
Local	29,242	-121	-125
Manufacturing	11,452	-151	-102
Natural Resources & Mining	18,161	-1,501	-389
Nonclassified	53	3	30
Other Services	7,143	-265	-189
Professional & Business Services	18,401	-30	1,056
State	9,405	-323	2
Trade, Transportation, & Utilities	44,357	-939	640
TOTAL	245,495	-5,186	2,117

Size Class Employment Composition 1st Quarter 2015



*Counties in WDA: Aransas, Bee, Brooks, Duval, Jim Wells, Kenedy, Kleberg, Live Oak, McMullen, Nueces, Refugio, & San Patricio