

Coastal Bend Workforce Area

(Not Seasonally Adjusted Unemployment Rates by WDA, MSA, & County)

| Area | Area Type | Latest Monthly Data October 2016 | | | | | | Previous Monthly Data September 2016 | | | | Year Ago October 2015 | | | |
|----------------|-----------|-------------------------------------|-------------|--------------|------|------|------|---|-------------|--------------|------|--------------------------|-------------|--------------|------|
| | | Labor Force | Employment | Unemployment | Rate | M+- | Y+- | Labor Force | Employment | Unemployment | Rate | Labor Force | Employment | Unemployment | Rate |
| United States | Nation | 159,712,000 | 151,925,000 | 7,787,000 | 4.9 | -0.1 | -0.1 | 159,907,000 | 151,968,000 | 7,939,000 | 5.0 | 157,096,000 | 149,197,000 | 7,899,000 | 5.0 |
| Texas | State | 13,377,024 | 12,745,511 | 631,513 | 4.7 | -0.1 | 0.2 | 13,355,657 | 12,718,562 | 637,095 | 4.8 | 13,109,532 | 12,513,444 | 596,088 | 4.5 |
| Corpus Christi | MSA | 211,757 | 199,809 | 11,948 | 5.6 | -0.6 | 0.3 | 212,695 | 199,414 | 13,281 | 6.2 | 208,420 | 197,440 | 10,980 | 5.3 |
| Coastal Bend | WDA | 269,957 | 253,449 | 16,508 | 6.1 | -0.7 | 0.4 | 271,975 | 253,443 | 18,532 | 6.8 | 269,454 | 253,999 | 15,455 | 5.7 |
| Aransas | County | 10,248 | 9,667 | 581 | 5.7 | -0.3 | 0.6 | 10,254 | 9,636 | 618 | 6.0 | 10,119 | 9,601 | 518 | 5.1 |
| Bee | County | 10,195 | 9,464 | 731 | 7.2 | -0.9 | 0.7 | 10,413 | 9,568 | 845 | 8.1 | 10,176 | 9,510 | 666 | 6.5 |
| Brooks | County | 2,366 | 2,115 | 251 | 10.6 | -1.4 | -0.4 | 2,423 | 2,132 | 291 | 12.0 | 2,544 | 2,265 | 279 | 11.0 |
| Duval | County | 4,749 | 4,240 | 509 | 10.7 | -1.2 | 1.4 | 4,869 | 4,288 | 581 | 11.9 | 5,100 | 4,626 | 474 | 9.3 |
| Jim Wells | County | 17,252 | 15,597 | 1,655 | 9.6 | -1.4 | 0.5 | 17,707 | 15,768 | 1,939 | 11.0 | 18,963 | 17,241 | 1,722 | 9.1 |
| Kenedy | County | 201 | 192 | 9 | 4.5 | -0.7 | 1.7 | 212 | 201 | 11 | 5.2 | 248 | 241 | 7 | 2.8 |
| Kleberg | County | 14,053 | 13,149 | 904 | 6.4 | -0.9 | 0.1 | 13,988 | 12,965 | 1,023 | 7.3 | 14,159 | 13,274 | 885 | 6.3 |
| Live Oak | County | 5,456 | 5,182 | 274 | 5.0 | -0.3 | 0.6 | 5,671 | 5,368 | 303 | 5.3 | 5,603 | 5,358 | 245 | 4.4 |
| McMullen | County | 885 | 870 | 15 | 1.7 | -0.3 | -0.5 | 880 | 862 | 18 | 2.0 | 939 | 918 | 21 | 2.2 |
| Nueces | County | 170,323 | 161,237 | 9,086 | 5.3 | -0.7 | 0.2 | 171,080 | 160,900 | 10,180 | 6.0 | 167,714 | 159,233 | 8,481 | 5.1 |
| Refugio | County | 3,043 | 2,831 | 212 | 7.0 | -0.7 | 1.7 | 3,117 | 2,877 | 240 | 7.7 | 3,302 | 3,126 | 176 | 5.3 |
| San Patricio | County | 31,186 | 28,905 | 2,281 | 7.3 | -0.6 | 0.8 | 31,361 | 28,878 | 2,483 | 7.9 | 30,587 | 28,606 | 1,981 | 6.5 |

(M+-) Change in unemployment rate from last month (Increase) (Decrease)

(Y+-) Change in unemployment rate from last year (Increase) (Decrease)

- Earnings for all occupations Coastal Bend, expressed as hourly rate (TWC):

| | | | | | |
|---------------------|-------------------------|----------------------------|-------------------------------|---|----------------------------|
| Coastal Bend | All Occupations- | Average \$18.35/hr. | Entry level \$8.58/hr. | Experienced workers \$23.24/hr. | Top 10% \$33.56/hr. |
| Texas | All Occupations- | Average \$20.97/hr. | Entry level \$8.88/hr. | Experienced workers \$ 27.02/hr. | Top 10% \$39.64/hr. |

- Educational Attainment for population 25 years of age and older - Corpus Christi (Census American Fact Finder/American Community Survey):

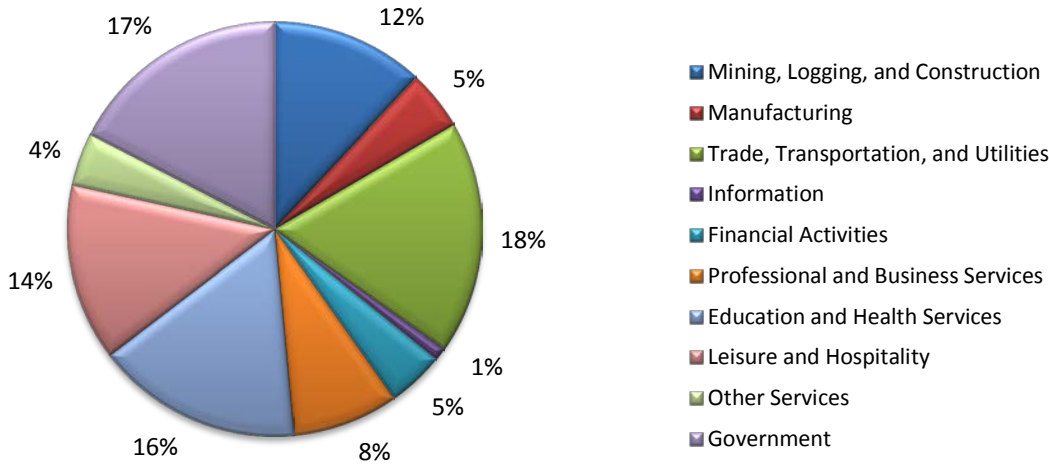
| | | | | | | | |
|--|-------------|--|--------------|--------------------------|--------------|---|-------------|
| Less than 9th grade | 8.7% | 12th grade & GED | 27.7% | Associates degree | 7.0% | Graduate or Professional degrees | 8.4% |
| 9th thru 11th grade | 9.3% | Some College | 25.1% | Bachelors degree | 13.8% | | |

- Median earnings Corpus Christi by education for persons 25 years of age & up (Census AFF/ACS): **\$27,211** (\$36,380 male/ \$22,328 female)

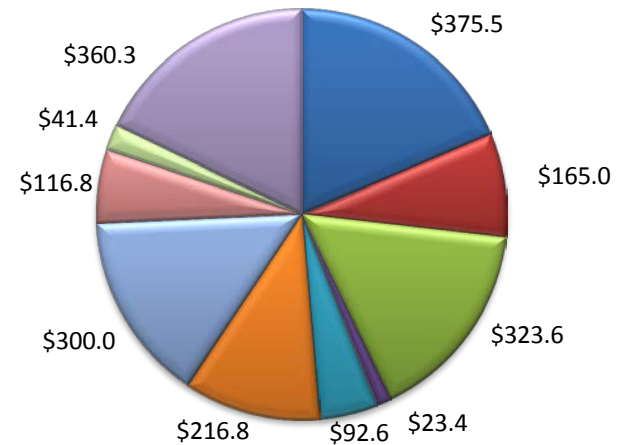
| | | | | | |
|------------------------------|-----------------|-----------------------------------|-----------------|---------------------------------|-----------------|
| Less than High School | \$15,437 | Some College or Associates | \$28,739 | Graduate or Professional | \$56,681 |
| High School & GED | \$26,818 | Bachelor's | \$44,078 | | |

(Aransas, Nueces, San Patricio)

Industry Composition



Wages by Industry (in millions)
2nd Quarter 2016



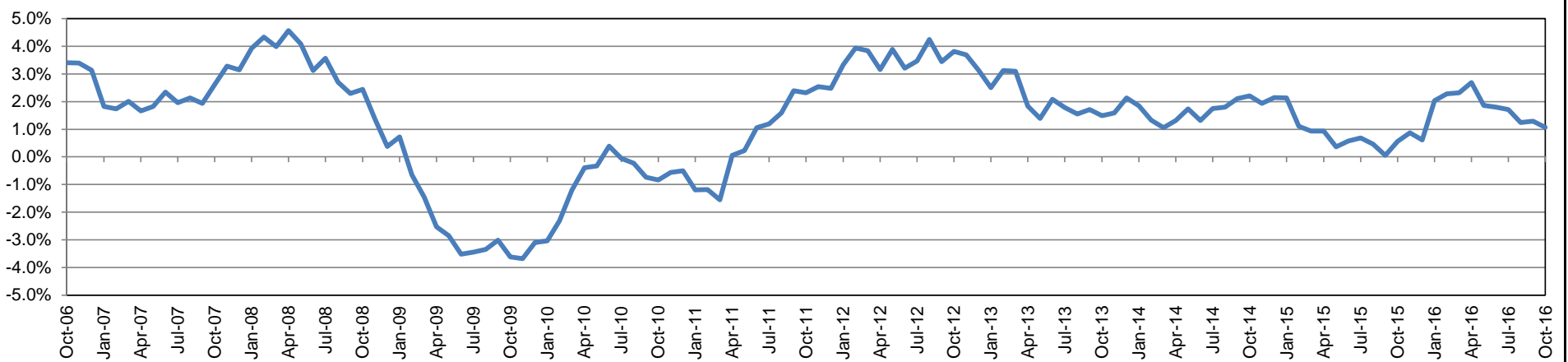
Employment by Industry

| | Oct-16 | Sep-16 | Oct-15 | Monthly Change | | Annual Change | |
|--------------------------------------|---------|---------|---------|----------------|-------|---------------|-------|
| | | | | Actual | % | Actual | % |
| Total Nonfarm | 197,900 | 196,200 | 195,800 | 1,700 | 0.9% | 2,100 | 1.1% |
| Mining, Logging, and Construction | 23,600 | 23,100 | 24,400 | 500 | 2.2% | -800 | -3.3% |
| Manufacturing | 9,200 | 9,200 | 9,300 | 0 | 0.0% | -100 | -1.1% |
| Trade, Transportation, and Utilities | 36,000 | 35,900 | 35,200 | 100 | 0.3% | 800 | 2.3% |
| Information | 2,000 | 2,000 | 2,000 | 0 | 0.0% | 0 | 0.0% |
| Financial Activities | 8,800 | 8,700 | 8,600 | 100 | 1.2% | 200 | 2.3% |
| Professional and Business Services | 16,400 | 16,200 | 17,300 | 200 | 1.2% | -900 | -5.2% |
| Education and Health Services | 31,900 | 31,600 | 30,500 | 300 | 1.0% | 1,400 | 4.6% |
| Leisure and Hospitality | 27,300 | 27,700 | 26,300 | -400 | -1.4% | 1,000 | 3.8% |
| Other Services | 8,200 | 8,200 | 8,100 | 0 | 0.0% | 100 | 1.2% |
| Government | 34,500 | 33,600 | 34,100 | 900 | 2.7% | 400 | 1.2% |

Industry Size Class June 2016

| Size Class | Employees per firm | Number of Firms | Employment in Size Class | % Total Employment |
|------------|--------------------|-----------------|--------------------------|--------------------|
| 9 | 1000+ | 19 | 43,079 | 23.3% |
| 8 | 500-999 | 18 | 12,047 | 6.5% |
| 7 | 250-499 | 58 | 19,182 | 10.4% |
| 6 | 100-249 | 208 | 31,369 | 16.9% |
| 5 | 50-99 | 319 | 22,054 | 11.9% |
| 4 | 20-49 | 832 | 25,442 | 13.7% |
| 3 | 10-19 | 1,091 | 14,852 | 8.0% |
| 2 | 5-9 | 1,482 | 9,888 | 5.3% |
| 1 | 1-4 | 3,456 | 7,156 | 3.9% |
| 0 | 0 | 787 | 0 | 0.0% |
| Total | | 8,270 | 185,069 | 100.0% |

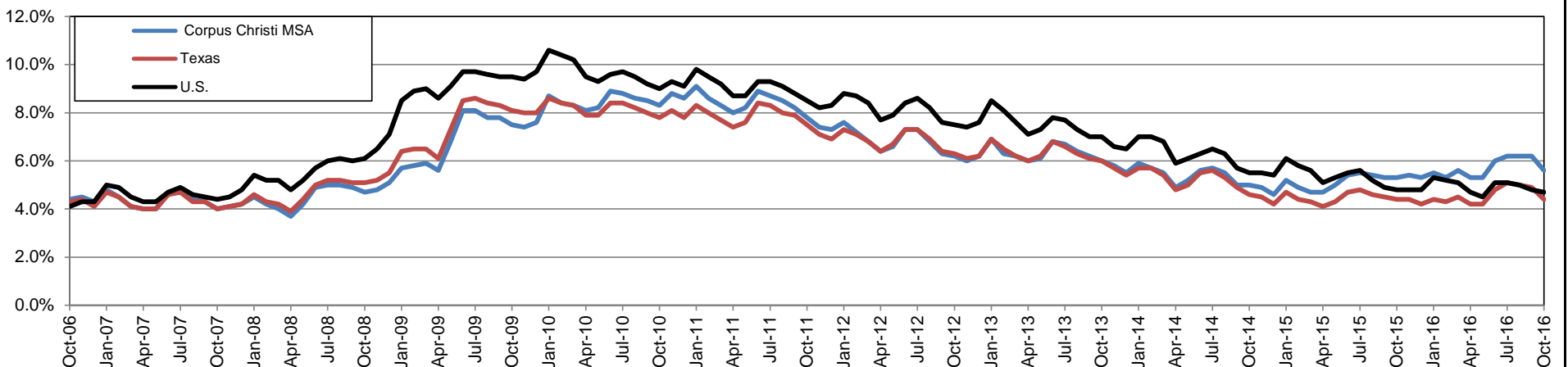
Annual Growth Rate for Total Nonagricultural Employment



Unemployment Information (all estimates in thousands)

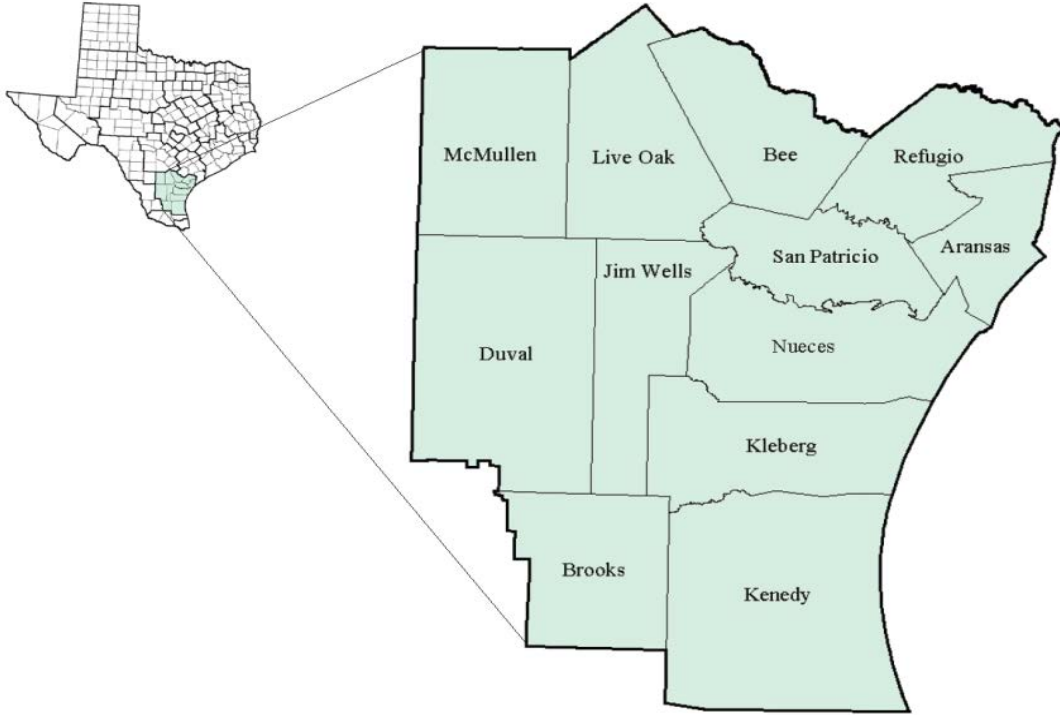
| | Corpus Christi MSA | | | | Texas (Actual) | | | | United States (Actual) | | | |
|--------|--------------------|-------|--------|------|----------------|----------|--------|------|------------------------|-----------|---------|------|
| | C.L.F. | Emp. | Unemp. | Rate | C.L.F. | Emp. | Unemp. | Rate | C.L.F. | Emp. | Unemp. | Rate |
| Oct-16 | 211.8 | 199.8 | 11.9 | 5.6 | 13,334.6 | 12,749.8 | 584.8 | 4.4 | 159,783.0 | 152,335.0 | 7,447.0 | 4.7 |
| Sep-16 | 212.7 | 199.4 | 13.3 | 6.2 | 13,416.5 | 12,754.6 | 661.9 | 4.9 | 159,636.0 | 151,977.0 | 7,658.0 | 4.8 |
| Oct-15 | 208.4 | 197.4 | 11.0 | 5.3 | 13,114.4 | 12,531.9 | 582.6 | 4.4 | 157,313.0 | 149,716.0 | 7,597.0 | 4.8 |

Historical Unemployment Rates



Coastal Bend Workforce Development Area

October 2016



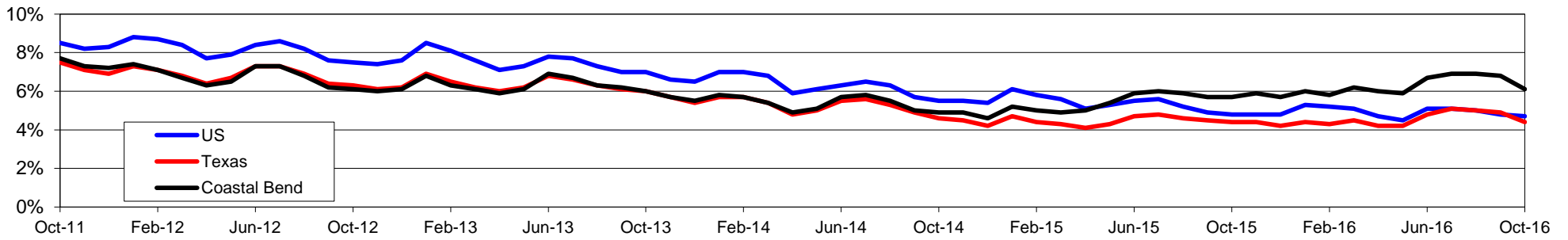
| WDA Labor Force Statistics | | | | |
|----------------------------|---------|---------|---------|-------|
| | Oct-16 | Sep-16 | Oct-15 | OTY |
| CLF | 269,957 | 271,975 | 269,454 | 503 |
| Employed | 253,449 | 253,443 | 253,999 | -550 |
| Unemployed | 16,508 | 18,532 | 15,455 | 1,053 |
| Rate | 6.1% | 6.8% | 5.7% | 0.4% |

| Texas Labor Force Statistics | | | | |
|------------------------------|------------|------------|------------|---------|
| | Oct-16 | Sep-16 | Oct-15 | OTY |
| CLF | 13,334,556 | 13,416,525 | 13,114,424 | 220,132 |
| Employed | 12,749,778 | 12,754,630 | 12,531,868 | 217,910 |
| Unemployed | 584,778 | 661,895 | 582,556 | 2,222 |
| Rate | 4.4% | 4.9% | 4.4% | 0.0% |

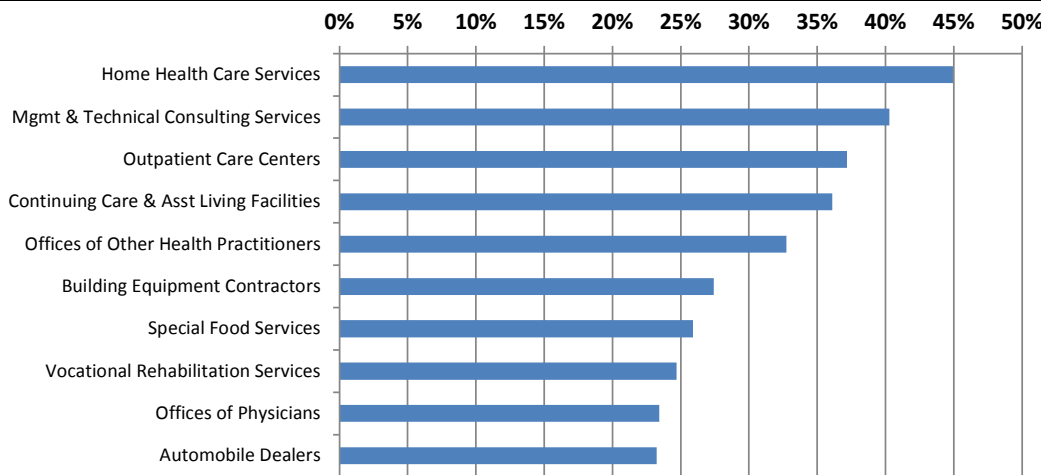
| US Labor Force Statistics | | | | |
|---------------------------|-------------|-------------|-------------|-----------|
| | Oct-16 | Sep-16 | Oct-15 | OTY |
| CLF | 159,783,000 | 159,636,000 | 157,313,000 | 2,470,000 |
| Employed | 152,335,000 | 151,977,000 | 149,716,000 | 2,619,000 |
| Unemployed | 7,447,000 | 7,658,000 | 7,597,000 | -150,000 |
| Rate | 4.7% | 4.8% | 4.8% | -0.1% |

| Continued Claims for the Week of the 12th | | | | |
|---|---------|---------|---------|--------|
| | Oct-16 | Sep-16 | Oct-15 | OTY |
| WDA | 4,044 | 4,109 | 4,127 | -83 |
| Texas | 123,806 | 133,309 | 129,360 | -5,554 |

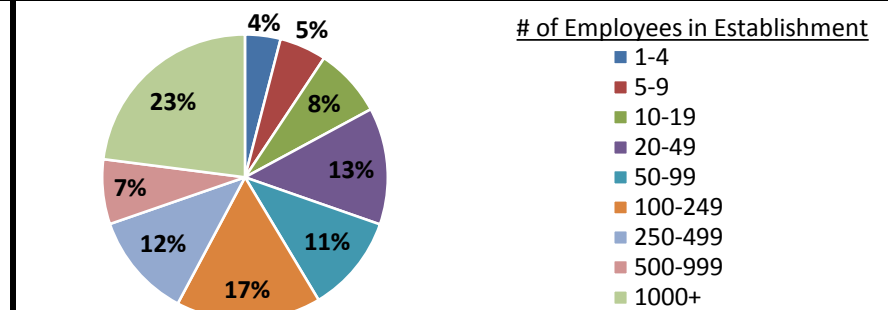
Historical Unemployment Rates



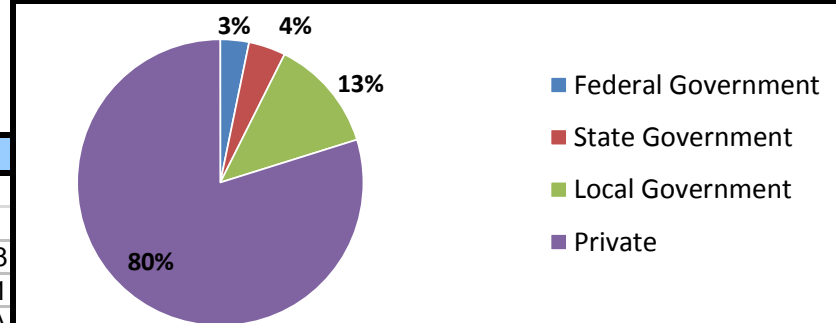
Projected Fastest Growing Industries in WDA (% growth 2014-2024)



Employment by Size Class (2nd Quarter 2016)



Employment by Ownership (2nd Quarter 2016)



Average Weekly Wage (2nd Quarter 2016)

| | Q2 2016 | Q1 2016 | Q2 2015 | Change | |
|-------|---------|---------|---------|---------|------|
| | | | | Quarter | Year |
| WDA | \$814 | \$821 | \$822 | -\$7 | -\$8 |
| Texas | \$1,000 | \$1,063 | \$989 | -\$63 | \$11 |
| US | N/A | \$1,083 | \$1,048 | N/A | N/A |

Employment by Industry (2nd Quarter 2016, Percent Change)

| Industry | Employment | % of total | % Change | |
|-------------------------------------|----------------|---------------|--------------|--------------|
| | | | Quarter | Year |
| Natural resources and mining | 9,592 | 4.1% | -14.0% | -35.4% |
| Construction | 20,696 | 8.8% | 2.8% | 0.7% |
| Manufacturing | 13,185 | 5.6% | -3.0% | -9.5% |
| Trade, transportation and utilities | 43,998 | 18.8% | -0.5% | -5.3% |
| Information | 2,249 | 1.0% | 2.8% | -7.0% |
| Financial activities | 9,433 | 4.0% | -2.3% | -10.0% |
| Professional and business services | 18,633 | 7.9% | -1.4% | 0.1% |
| Education and health services | 65,581 | 28.0% | -0.1% | 2.2% |
| Leisure and hospitality | 32,525 | 13.9% | 5.6% | -0.9% |
| Other services | 6,495 | 2.8% | 0.2% | -9.5% |
| Public administration | 12,011 | 5.1% | 0.7% | 2.3% |
| Total | 234,398 | 100.0% | -0.1% | -3.9% |

Employment by Industry (2nd Quarter 2016)

