

Coastal Bend Workforce Area

(Not Seasonally Adjusted Unemployment Rates by WDA, MSA, & County)

Area	Area Type	Latest Monthly Data October 2015						Previous Monthly Data September 2015				Year Ago October 2014			
		Labor Force	Employment	Unemployment	Rate	M+-	Y+-	Labor Force	Employment	Unemployment	Rate	Labor Force	Employment	Unemployment	Rate
United States	Nation	157,028,000	149,120,000	7,908,000	5.0	-0.1	-0.7	156,715,000	148,800,000	7,915,000	5.1	156,243,000	147,260,000	8,983,000	5.7
Texas	State	13,036,216	12,466,132	570,084	4.4	0.2	0.3	13,009,973	12,465,306	544,667	4.2	13,147,707	12,528,142	619,565	4.7
Corpus Christi	MSA	212,347	201,278	11,069	5.2	0.2	0.4	211,523	200,947	10,576	5.0	214,294	203,902	10,392	4.8
Coastal Bend	WDA	277,031	261,441	15,590	5.6	0.2	0.8	278,027	263,058	14,969	5.4	280,812	267,285	13,527	4.8
Aransas	County	10,172	9,653	519	5.1	0.2	0.0	10,131	9,631	500	4.9	10,340	9,810	530	5.1
Bee	County	10,328	9,653	675	6.5	0.4	1.2	10,572	9,924	648	6.1	10,848	10,272	576	5.3
Brooks	County	2,668	2,388	280	10.5	0.1	3.7	2,712	2,431	281	10.4	2,690	2,508	182	6.8
Duval	County	5,551	5,070	481	8.7	0.5	3.5	5,714	5,248	466	8.2	5,667	5,372	295	5.2
Jim Wells	County	20,249	18,505	1,744	8.6	0.5	3.9	20,761	19,070	1,691	8.1	20,279	19,323	956	4.7
Kenedy	County	344	337	7	2.0	0.2	0.3	356	348	8	2.2	351	343	8	2.3
Kleberg	County	14,709	13,823	886	6.0	0.3	1.1	14,960	14,105	855	5.7	15,441	14,691	750	4.9
Live Oak	County	6,245	5,997	248	4.0	0.3	0.9	6,595	6,353	242	3.7	6,416	6,217	199	3.1
McMullen	County	1,156	1,136	20	1.7	0.1	0.1	1,256	1,235	21	1.7	1,172	1,153	19	1.6
Nueces	County	170,991	162,445	8,546	5.0	0.2	0.4	170,370	162,171	8,199	4.8	172,458	164,491	7,967	4.6
Refugio	County	3,434	3,254	180	5.2	0.1	1.1	3,578	3,397	181	5.1	3,654	3,504	150	4.1
San Patricio	County	31,184	29,180	2,004	6.4	0.3	0.4	31,022	29,145	1,877	6.1	31,496	29,601	1,895	6.0

(M+-) Change in unemployment rate from last month (Increase) (Decrease)

(Y+-) Change in unemployment rate from last year (Increase) (Decrease)

- Earnings for all occupations Coastal Bend, expressed as hourly rate (TWC):

Coastal Bend	All Occupations-	Average \$18.35/hr.	Entry level \$8.58/hr.	Experienced workers \$23.24/hr.	Top 10% \$33.56/hr.
Texas	All Occupations-	Average \$20.97/hr.	Entry level \$8.88/hr.	Experienced workers \$ 27.02/hr.	Top 10% \$39.64/hr.

- Educational Attainment for population 25 years of age and older - Corpus Christi (Census American Fact Finder/American Community Survey):

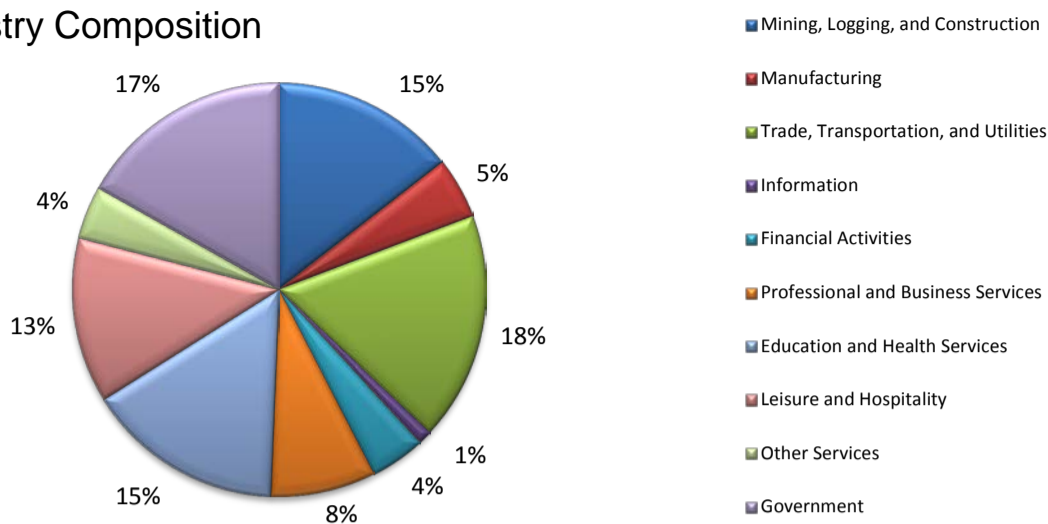
Less than 9th grade	8.7%	12th grade & GED	27.7%	Associates degree	7.0%	Graduate or Professional degrees	8.4%
9th thru 11th grade	9.3%	Some College	25.1%	Bachelors degree	13.8%		

- Median earnings Corpus Christi by education for persons 25 years of age & up (Census AFF/ACS): **\$27,211** (\$36,380 male/ \$22,328 female)

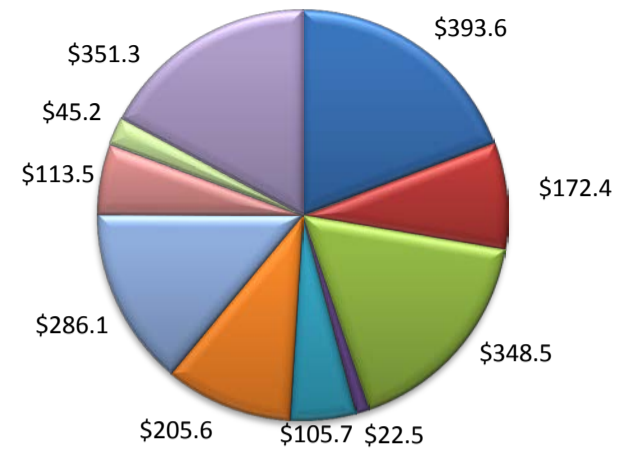
Less than High School	\$15,437	Some College or Associates	\$28,739	Graduate or Professional	\$56,681
High School & GED	\$26,818	Bachelor's	\$44,078		

(Aransas, Nueces, San Patricio)

Industry Composition



Wages by Industry (in millions)
2nd Quarter 2015



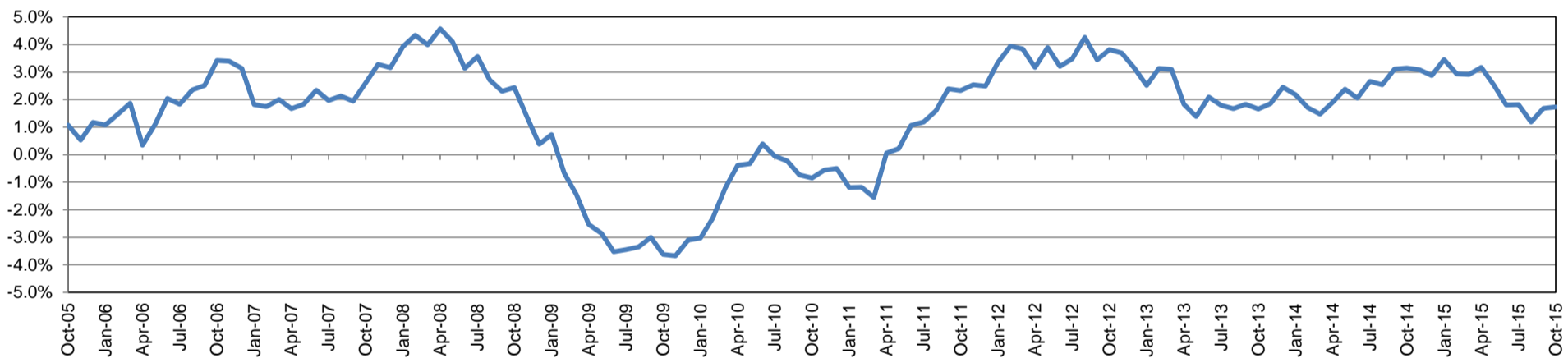
Employment by Industry

	Oct-15	Sep-15	Oct-14	Monthly Change		Annual Change	
				Actual	%	Actual	%
Total Nonfarm	200,200	199,000	196,800	1,200	0.6%	3,400	1.7%
Mining, Logging, and Construction	28,900	27,600	27,000	1,300	4.7%	1,900	7.0%
Manufacturing	9,600	9,600	9,900	0	0.0%	-300	-3.0%
Trade, Transportation, and Utilities	35,700	36,200	35,900	-500	-1.4%	-200	-0.6%
Information	2,200	2,100	2,100	100	4.8%	100	4.8%
Financial Activities	8,600	8,600	8,600	0	0.0%	0	0.0%
Professional and Business Services	16,400	16,300	16,300	100	0.6%	100	0.6%
Education and Health Services	30,900	30,800	30,100	100	0.3%	800	2.7%
Leisure and Hospitality	25,900	26,600	25,100	-700	-2.6%	800	3.2%
Other Services	8,300	8,400	8,300	-100	-1.2%	0	0.0%
Government	33,700	32,800	33,500	900	2.7%	200	0.6%

Industry Size Class June 2015

Size Class	Employees per firm	Number of Firms	Employment in Size Class	% Total Employment
9	1000+	19	42,098	22.3%
8	500-999	20	13,790	7.3%
7	250-499	56	18,769	9.9%
6	100-249	215	33,145	17.5%
5	50-99	333	23,092	12.2%
4	20-49	836	25,621	13.6%
3	10-19	1,095	14,984	7.9%
2	5-9	1,532	10,184	5.4%
1	1-4	3,524	7,325	3.9%
0	0	626	0	0.0%
Total		8,256	189,008	100.0%

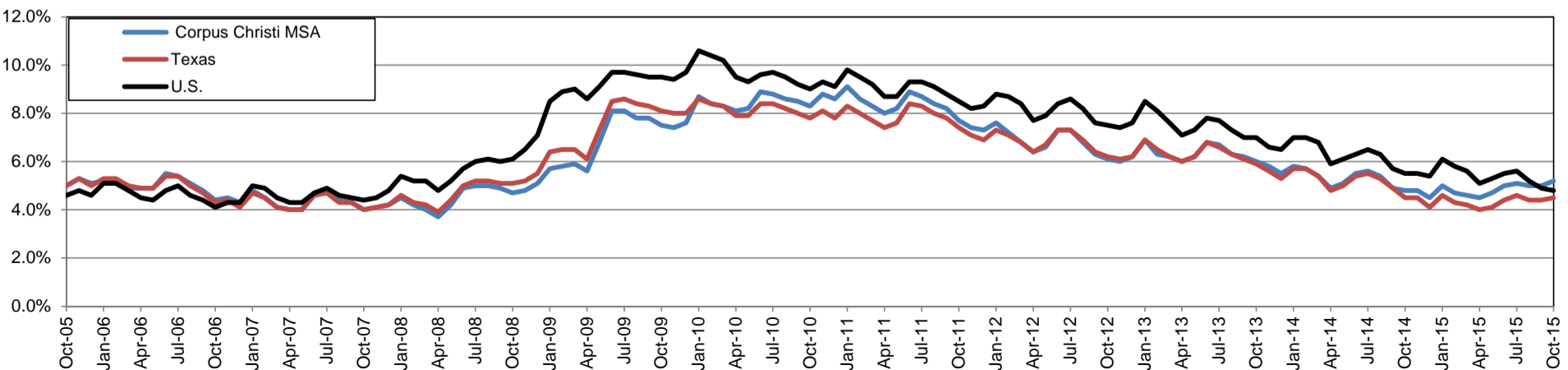
Annual Growth Rate for Total Nonagricultural Employment



Unemployment Information (all estimates in thousands)

	Corpus Christi MSA				Texas (Actual)				United States (Actual)			
	C.L.F.	Emp.	Unemp.	Rate	C.L.F.	Emp.	Unemp.	Rate	C.L.F.	Emp.	Unemp.	Rate
Oct-15	212.3	201.3	11.1	5.2	13,070.8	12,486.4	584.4	4.5	157,313.0	149,716.0	7,597.0	4.8
Sep-15	211.5	200.9	10.6	5.0	13,045.4	12,477.6	567.8	4.4	156,607.0	148,980.0	7,628.0	4.9
Oct-14	214.3	203.9	10.4	4.8	13,208.8	12,608.1	600.7	4.5	156,616.0	147,936.0	8,680.0	5.5

Historical Unemployment Rates

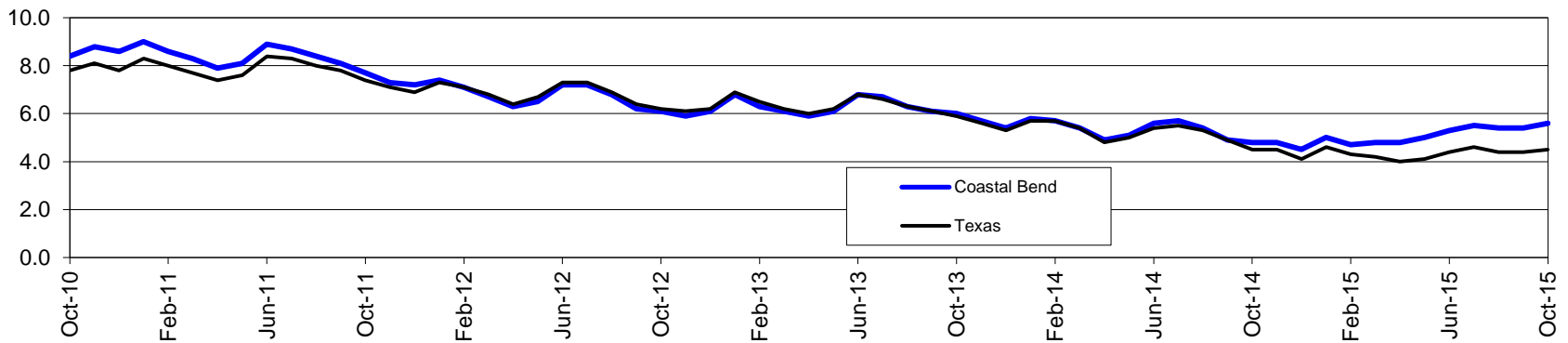


Coastal Bend Workforce Development Area*

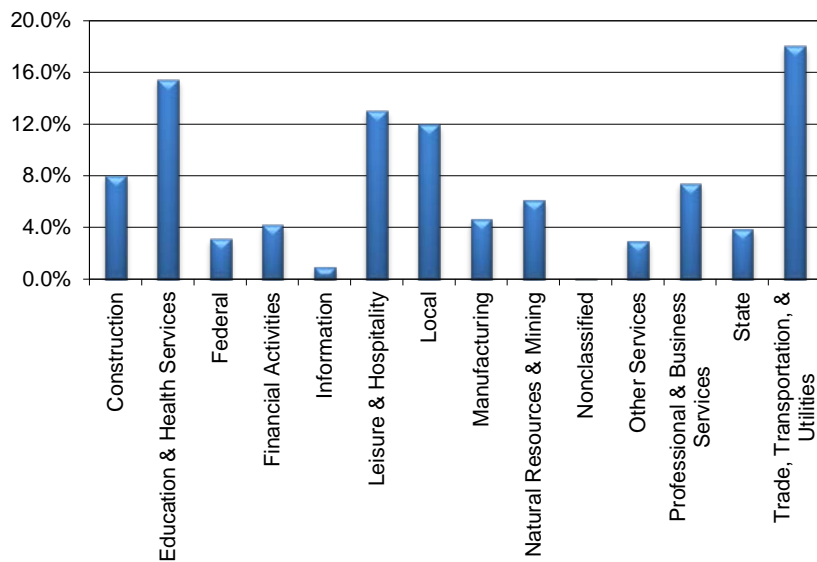
October 2015

Coastal Bend WDA					Texas				
	CLF	Employed	Unemployed	Rate		CLF	Employed	Unemployed	Rate
Oct-15	277,031	261,441	15,590	5.6	Oct-15	13,070,778	12,486,356	584,422	4.5
Sep-15	278,027	263,058	14,969	5.4	Sep-15	13,045,364	12,477,604	567,760	4.4
Oct-14	280,812	267,285	13,527	4.8	Oct-14	13,208,803	12,608,056	600,747	4.5

Historical Unemployment Rates



Coastal Bend WDA Industry Composition 2nd Quarter 2015



Total WDA Claims

Continued Claims for the Week of the 12th

	Oct-15	Sep-15	Oct-14	OTY
Continued	4,112	4,389	2,568	1,544

Texas Unemployment Insurance Claims

Continued Claims for the Week of the 12th

	Oct-15	Sep-15	Oct-14	OTY
Continued	128,334	134,736	99,427	28,907

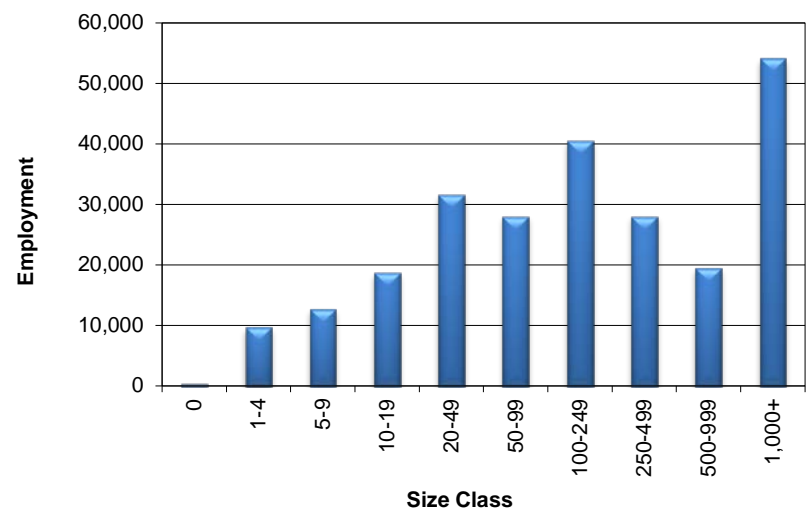
Coastal Bend WDA Average Weekly Wage

	Coastal Bend	Texas
2nd Quarter 2015	\$820.10	\$988.47
1st Quarter 2015	\$863.77	\$1,088.07
2nd Quarter 2014	\$829.17	\$973.16
Quarter Change	-\$43.67	-\$99.60
OTY Change	-\$9.07	\$15.31

NAICS Covered Employment Quarterly Data 2nd Quarter 2015

SUPER SECTOR	Employment	Change	
		Quarter	Year
Construction	19,559	-273	-248
Education & Health Services	37,684	444	474
Federal	7,710	-53	-74
Financial Activities	10,330	-63	-77
Information	2,289	131	-111
Leisure & Hospitality	31,879	2,031	955
Local	29,288	46	-2
Manufacturing	11,240	-210	-522
Natural Resources & Mining	14,858	-3,047	-3,933
Nonclassified	48	18	18
Other Services	7,129	-8	-465
Professional & Business Services	18,190	-388	626
State	9,492	87	212
Trade, Transportation, & Utilities	44,135	-258	1
TOTAL	243,831	-1,543	-3,146

Size Class Employment Composition 2nd Quarter 2015



*Counties in WDA: Aransas, Bee, Brooks, Duval, Jim Wells, Kenedy, Kleberg, Live Oak, McMullen, Nueces, Refugio, & San Patricio