

# Coastal Bend Workforce Area

(Not Seasonally Adjusted Unemployment Rates by WDA, MSA, & County)

Area	Area Type	Latest Monthly Data November 2016						Previous Monthly Data October 2016				Year Ago November 2015			
		Labor Force	Employment	Unemployment	Rate	M+-	Y+-	Labor Force	Employment	Unemployment	Rate	Labor Force	Employment	Unemployment	Rate
United States	Nation	159,486,000	152,085,000	7,400,000	4.6	-0.3	-0.4	159,712,000	151,925,000	7,787,000	4.9	157,367,000	149,444,000	7,924,000	5.0
Texas	State	13,404,598	12,789,504	615,094	4.6	-0.1	0.0	13,377,681	12,745,511	631,513	4.7	13,127,052	12,523,390	603,662	4.6
Corpus Christi	MSA	212,574	200,760	11,814	5.6	0.0	0.2	211,323	199,396	11,927	5.6	209,164	197,865	11,299	5.4
Coastal Bend	WDA	270,131	253,950	16,181	6.0	-0.1	0.1	269,470	252,992	16,478	6.1	270,008	254,172	15,836	5.9
Aransas	County	10,267	9,699	568	5.5	-0.2	0.2	10,228	9,649	579	5.7	10,136	9,597	539	5.3
Bee	County	10,106	9,385	721	7.1	-0.1	0.5	10,187	9,458	729	7.2	10,206	9,529	677	6.6
Brooks	County	2,328	2,098	230	9.9	-0.7	-0.9	2,363	2,113	250	10.6	2,518	2,246	272	10.8
Duval	County	4,699	4,210	489	10.4	-0.3	0.6	4,746	4,237	509	10.7	5,077	4,580	497	9.8
Jim Wells	County	17,004	15,413	1,591	9.4	-0.2	0.1	17,239	15,585	1,654	9.6	18,985	17,222	1,763	9.3
Kenedy	County	200	190	10	5.0	0.5	1.7	201	192	9	4.5	243	235	8	3.3
Kleberg	County	13,958	13,102	856	6.1	-0.3	-0.2	14,038	13,137	901	6.4	14,025	13,144	881	6.3
Live Oak	County	5,356	5,094	262	4.9	-0.1	0.6	5,450	5,177	273	5.0	5,604	5,362	242	4.3
McMullen	County	872	859	13	1.5	-0.2	-0.2	884	869	15	1.7	917	901	16	1.7
Nueces	County	171,031	162,029	9,002	5.3	0.0	0.1	169,975	160,903	9,072	5.3	168,318	159,646	8,672	5.2
Refugio	County	3,034	2,839	195	6.4	-0.5	0.9	3,039	2,828	211	6.9	3,269	3,088	181	5.5
San Patricio	County	31,276	29,032	2,244	7.2	-0.1	0.4	31,120	28,844	2,276	7.3	30,710	28,622	2,088	6.8

(M+-) Change in unemployment rate from last month (Increase) (Decrease)

(Y+-) Change in unemployment rate from last year (Increase) (Decrease)

- Earnings for all occupations Coastal Bend, expressed as hourly rate (TWC):

<b>Coastal Bend</b>	<b>All Occupations-</b>	<b>Average \$18.35/hr.</b>	<b>Entry level \$8.58/hr.</b>	<b>Experienced workers \$23.24/hr.</b>	<b>Top 10% \$33.56/hr.</b>
<b>Texas</b>	<b>All Occupations-</b>	<b>Average \$20.97/hr.</b>	<b>Entry level \$8.88/hr.</b>	<b>Experienced workers \$ 27.02/hr.</b>	<b>Top 10% \$39.64/hr.</b>

- Educational Attainment for population 25 years of age and older - Corpus Christi (Census American Fact Finder/American Community Survey):

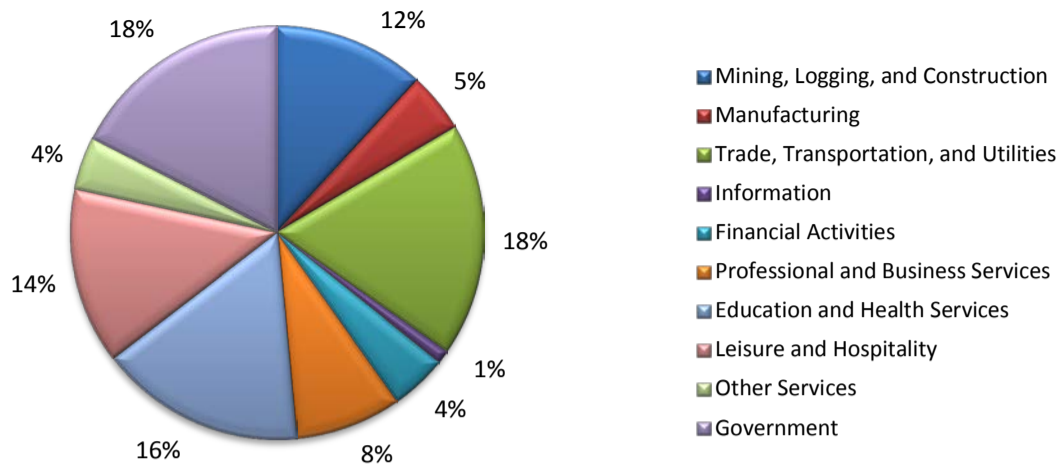
<b>Less than 9<sup>th</sup> grade</b>	<b>8.7%</b>	<b>12<sup>th</sup> grade &amp; GED</b>	<b>27.7%</b>	<b>Associates degree</b>	<b>7.0%</b>	<b>Graduate or Professional degrees</b>	<b>8.4%</b>
<b>9<sup>th</sup> thru 11<sup>th</sup> grade</b>	<b>9.3%</b>	<b>Some College</b>	<b>25.1%</b>	<b>Bachelors degree</b>	<b>13.8%</b>		

- Median earnings Corpus Christi by education for persons 25 years of age & up (Census AFF/ACS): **\$27,211** (\$36,380 male/ \$22,328 female)

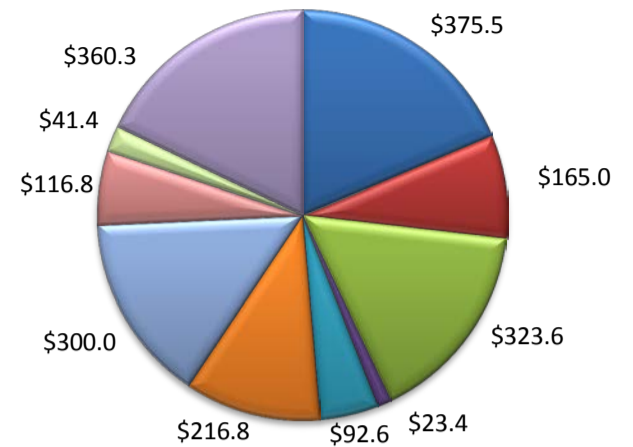
<b>Less than High School</b>	<b>\$15,437</b>	<b>Some College or Associates</b>	<b>\$28,739</b>	<b>Graduate or Professional</b>	<b>\$56,681</b>
<b>High School &amp; GED</b>	<b>\$26,818</b>	<b>Bachelor's</b>	<b>\$44,078</b>		

(Aransas, Nueces, San Patricio)

Industry Composition



Wages by Industry (in millions)  
2nd Quarter 2016



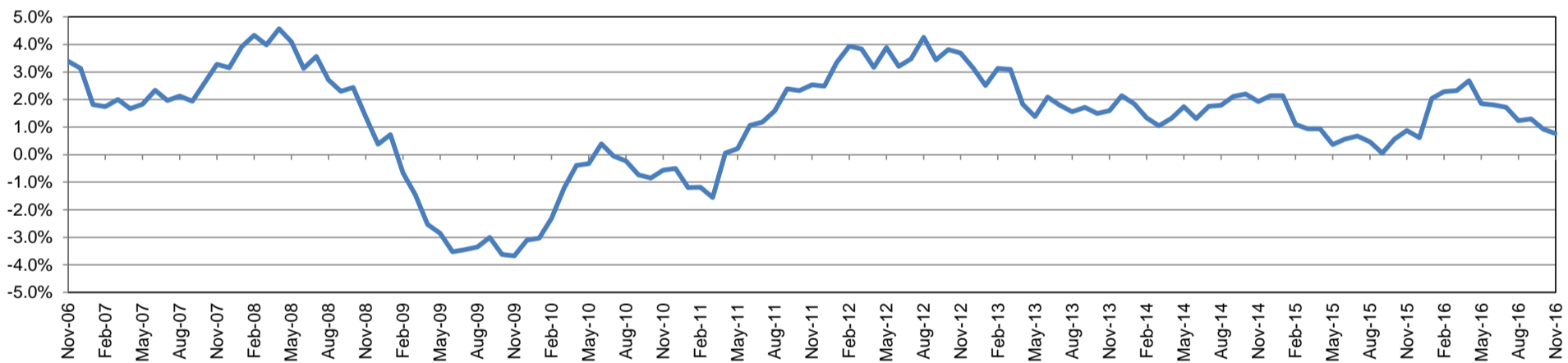
Employment by Industry

	Nov-16	Oct-16	Nov-15	Monthly Change		Annual Change	
				Actual	%	Actual	%
Total Nonfarm	198,300	197,600	196,800	700	0.4%	1,500	0.8%
Mining, Logging, and Construction	23,400	23,600	24,400	-200	-0.9%	-1,000	-4.1%
Manufacturing	9,300	9,200	9,300	100	1.1%	0	0.0%
Trade, Transportation, and Utilities	36,100	36,000	36,500	100	0.3%	-400	-1.1%
Information	2,100	2,100	2,000	0	0.0%	100	5.0%
Financial Activities	8,800	8,800	8,600	0	0.0%	200	2.3%
Professional and Business Services	16,500	15,900	16,900	600	3.8%	-400	-2.4%
Education and Health Services	31,900	31,900	30,700	0	0.0%	1,200	3.9%
Leisure and Hospitality	27,300	27,400	26,200	-100	-0.4%	1,100	4.2%
Other Services	8,200	8,200	8,100	0	0.0%	100	1.2%
Government	34,700	34,500	34,100	200	0.6%	600	1.8%

Industry Size Class June 2016

Size Class	Employees per firm	Number of Firms	Employment in Size Class	% Total Employment
9	1000+	19	43,079	23.3%
8	500-999	18	12,047	6.5%
7	250-499	58	19,182	10.4%
6	100-249	208	31,369	16.9%
5	50-99	319	22,054	11.9%
4	20-49	832	25,442	13.7%
3	10-19	1,091	14,852	8.0%
2	5-9	1,482	9,888	5.3%
1	1-4	3,456	7,156	3.9%
0	0	787	0	0.0%
Total		8,270	185,069	100.0%

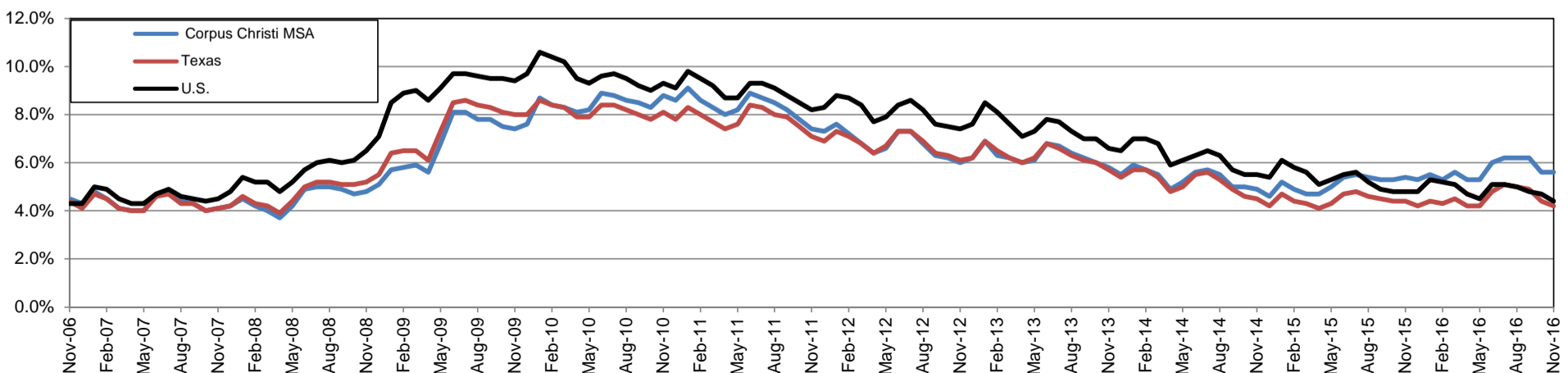
Annual Growth Rate for Total Nonagricultural Employment



Unemployment Information (all estimates in thousands)

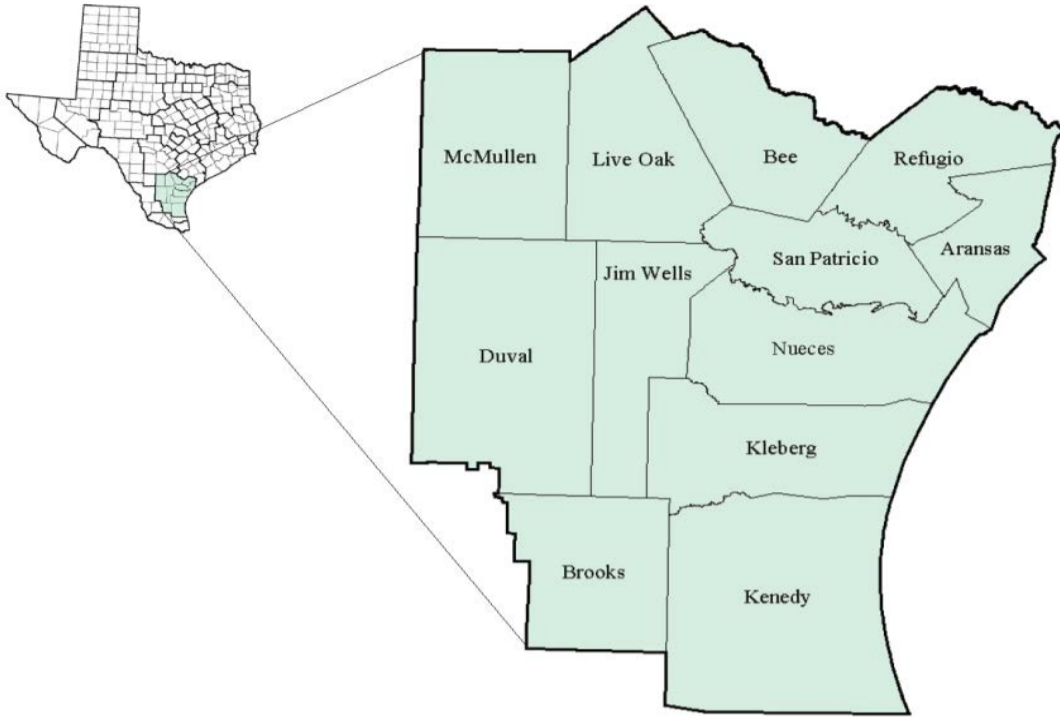
	Corpus Christi MSA				Texas (Actual)				United States (Actual)			
	C.L.F.	Emp.	Unemp.	Rate	C.L.F.	Emp.	Unemp.	Rate	C.L.F.	Emp.	Unemp.	Rate
Nov-16	212.6	200.8	11.8	5.6	13,391.2	12,824.3	566.9	4.2	159,451.0	152,385.0	7,066.0	4.4
Oct-16	211.3	199.4	11.9	5.6	13,334.6	12,750.0	584.6	4.4	159,783.0	152,335.0	7,447.0	4.7
Nov-15	209.2	197.9	11.3	5.4	13,147.4	12,564.1	583.3	4.4	157,340.0	149,766.0	7,573.0	4.8

Historical Unemployment Rates



# Coastal Bend Workforce Development Area

## November 2016



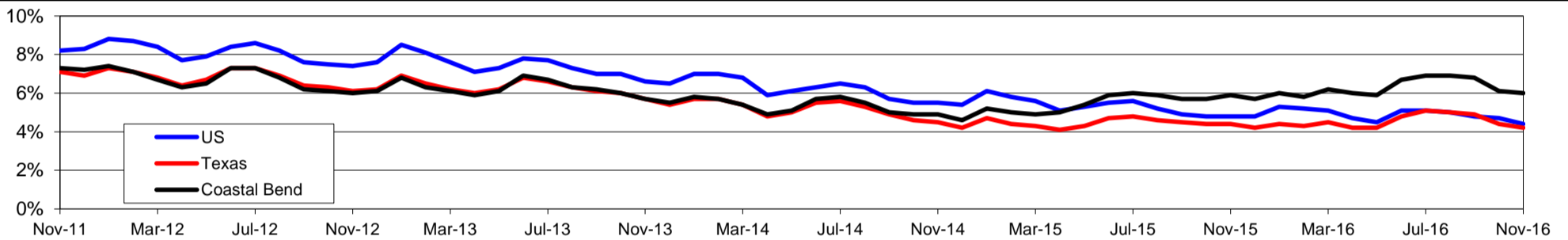
WDA Labor Force Statistics				
	Nov-16	Oct-16	Nov-15	OTY
CLF	270,131	269,470	270,008	123
Employed	253,950	252,992	254,172	-222
Unemployed	16,181	16,478	15,836	345
Rate	6.0%	6.1%	5.9%	0.1%

Texas Labor Force Statistics				
	Nov-16	Oct-16	Nov-15	OTY
CLF	13,391,218	13,334,552	13,147,382	243,836
Employed	12,824,325	12,749,955	12,564,078	260,247
Unemployed	566,893	584,597	583,304	-16,411
Rate	4.2%	4.4%	4.4%	-0.2%

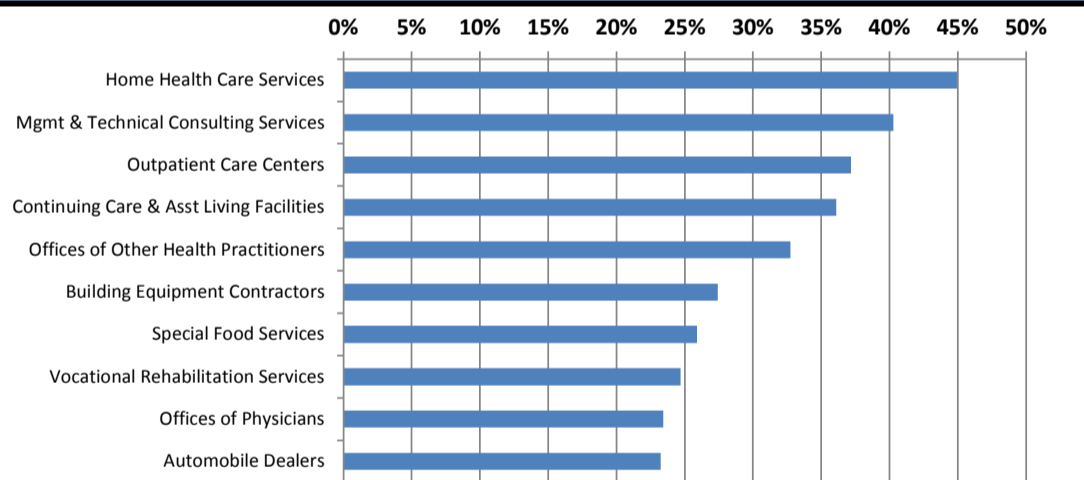
US Labor Force Statistics				
	Nov-16	Oct-16	Nov-15	OTY
CLF	159,451,000	159,783,000	157,340,000	2,111,000
Employed	152,385,000	152,335,000	149,766,000	2,619,000
Unemployed	7,066,000	7,447,000	7,573,000	-507,000
Rate	4.4%	4.7%	4.8%	-0.4%

Continued Claims for the Week of the 12th				
	Nov-16	Oct-16	Nov-15	OTY
WDA	4,141	4,057	4,397	-256
Texas	125,542	124,901	134,003	-8,461

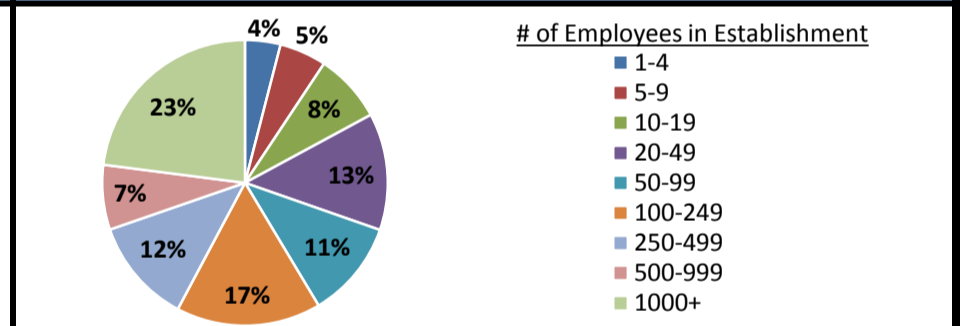
### Historical Unemployment Rates



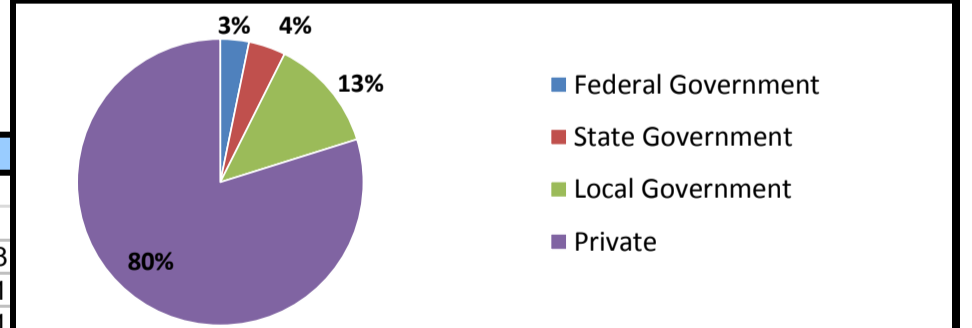
### Projected Fastest Growing Industries in WDA (% growth 2014-2024)



### Employment by Size Class (2nd Quarter 2016)



### Employment by Ownership (2nd Quarter 2016)



### Average Weekly Wage (2nd Quarter 2016)

	Q2 2016	Q1 2016	Q2 2015	Change	
				Quarter	Year
WDA	\$814	\$821	\$822	-\$7	-\$8
Texas	\$1,000	\$1,063	\$989	-\$63	\$11
US	\$989	\$1,042	\$968	-\$53	\$21

### Employment by Industry (2nd Quarter 2016, Percent Change)

Industry	Employment	% of total	% Change	
			Quarter	Year
Natural resources and mining	9,592	4.1%	-14.0%	-35.4%
Construction	20,696	8.8%	2.8%	0.7%
Manufacturing	13,185	5.6%	-3.0%	-9.5%
Trade, transportation and utilities	43,998	18.8%	-0.5%	-5.3%
Information	2,249	1.0%	2.8%	-7.0%
Financial activities	9,433	4.0%	-2.3%	-10.0%
Professional and business services	18,633	7.9%	-1.4%	0.1%
Education and health services	65,581	28.0%	-0.1%	2.2%
Leisure and hospitality	32,525	13.9%	5.6%	-0.9%
Other services	6,495	2.8%	0.2%	-9.5%
Public administration	12,011	5.1%	0.7%	2.3%
<b>Total</b>	<b>234,398</b>	<b>100.0%</b>	<b>-0.1%</b>	<b>-3.9%</b>

### Employment by Industry (2nd Quarter 2016)

