

Coastal Bend Workforce Area

(Not Seasonally Adjusted Unemployment Rates by WDA, MSA, & County)

Area	Area Type	Latest Monthly Data November 2015						Previous Monthly Data October 2015				Year Ago November 2014			
		Labor Force	Employment	Unemployment	Rate	M+-	Y+-	Labor Force	Employment	Unemployment	Rate	Labor Force	Employment	Unemployment	Rate
United States	Nation	157,301,000	149,364,000	7,937,000	5.0	0.0	-0.8	157,028,000	149,120,000	7,906,000	5.0	156,402,000	147,331,000	9,071,000	5.8
Texas	State	13,070,635	12,472,249	598,386	4.6	0.2	0.0	13,035,557	12,465,672	569,885	4.4	13,161,109	12,551,420	609,689	4.6
Corpus Christi	MSA	212,855	201,308	11,547	5.4	0.2	1.4	212,183	201,138	11,045	5.2	214,055	203,782	10,273	4.8
Coastal Bend	WDA	276,368	260,181	16,187	5.9	0.3	1.1	276,820	261,266	15,554	5.6	280,263	266,920	13,343	4.8
Aransas	County	10,181	9,632	549	5.4	0.3	0.4	10,165	9,647	518	5.1	10,319	9,799	520	5.0
Bee	County	10,077	9,382	695	6.9	0.4	1.6	10,320	9,647	673	6.5	10,796	10,226	570	5.3
Brooks	County	2,639	2,363	276	10.5	0.0	3.8	2,666	2,387	279	10.5	2,667	2,487	180	6.7
Duval	County	5,430	4,921	509	9.4	0.8	4.3	5,546	5,067	479	8.6	5,613	5,329	284	5.1
Jim Wells	County	20,102	18,295	1,807	9.0	0.4	4.4	20,233	18,494	1,739	8.6	20,253	19,327	926	4.6
Kenedy	County	323	315	8	2.5	0.5	0.5	344	337	7	2.0	345	338	7	2.0
Kleberg	County	14,567	13,671	896	6.2	0.2	1.4	14,701	13,815	886	6.0	15,380	14,645	735	4.8
Live Oak	County	5,964	5,718	246	4.1	0.1	1.0	6,240	5,993	247	4.0	6,375	6,176	199	3.1
McMullen	County	1,047	1,030	17	1.6	-0.1	-0.2	1,156	1,136	20	1.7	1,168	1,147	21	1.8
Nueces	County	171,398	162,538	8,860	5.2	0.2	0.6	170,860	162,331	8,529	5.0	172,294	164,445	7,849	4.6
Refugio	County	3,364	3,178	186	5.5	0.3	1.4	3,431	3,252	179	5.2	3,611	3,463	148	4.1
San Patricio	County	31,276	29,138	2,138	6.8	0.4	0.7	31,158	29,160	1,998	6.4	31,442	29,538	1,904	6.1

(M+-) Change in unemployment rate from last month (Increase) (Decrease)

(Y+-) Change in unemployment rate from last year (Increase) (Decrease)

- Earnings for all occupations Coastal Bend, expressed as hourly rate (TWC):

Coastal Bend	All Occupations-	Average \$18.35/hr.	Entry level \$8.58/hr.	Experienced workers \$23.24/hr.	Top 10% \$33.56/hr.
Texas	All Occupations-	Average \$20.97/hr.	Entry level \$8.88/hr.	Experienced workers \$ 27.02/hr.	Top 10% \$39.64/hr.

- Educational Attainment for population 25 years of age and older - Corpus Christi (Census American Fact Finder/American Community Survey):

Less than 9th grade	8.7%	12th grade & GED	27.7%	Associates degree	7.0%	Graduate or Professional degrees	8.4%
9th thru 11th grade	9.3%	Some College	25.1%	Bachelors degree	13.8%		

- Median earnings Corpus Christi by education for persons 25 years of age & up (Census AFF/ACS): **\$27,211** (\$36,380 male/ \$22,328 female)

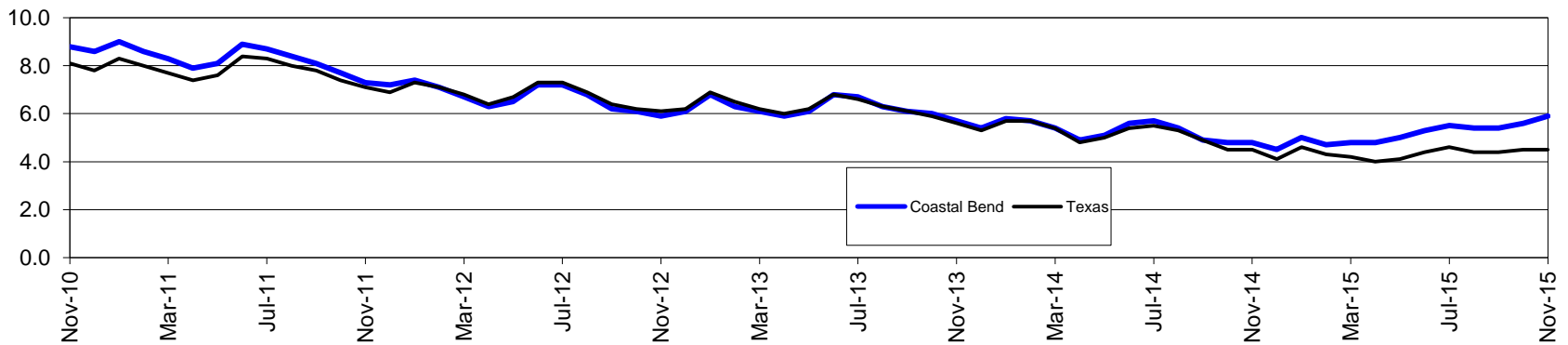
Less than High School	\$15,437	Some College or Associates	\$28,739	Graduate or Professional	\$56,681
High School & GED	\$26,818	Bachelor's	\$44,078		

Coastal Bend Workforce Development Area*

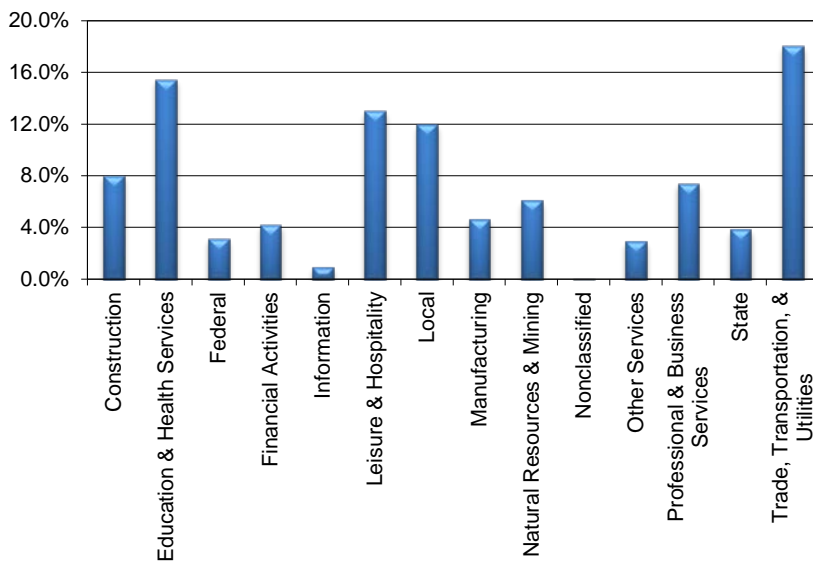
November 2015

Coastal Bend WDA					Texas				
	CLF	Employed	Unemployed	Rate		CLF	Employed	Unemployed	Rate
Nov-15	276,368	260,181	16,187	5.9	Nov-15	13,100,281	12,506,599	593,682	4.5
Oct-15	276,820	261,266	15,554	5.6	Oct-15	13,069,100	12,485,223	583,877	4.5
Nov-14	280,263	266,920	13,343	4.8	Nov-14	13,202,845	12,614,267	588,578	4.5

Historical Unemployment Rates



Coastal Bend WDA Industry Composition 2nd Quarter 2015



Total WDA Claims

Continued Claims for the Week of the 12th

	Nov-15	Oct-15	Nov-14	OTY
Continued	4,361	4,124	2,688	1,673

Texas Unemployment Insurance Claims

Continued Claims for the Week of the 12th

	Nov-15	Oct-15	Nov-14	OTY
Continued	132,531	129,360	102,011	30,520

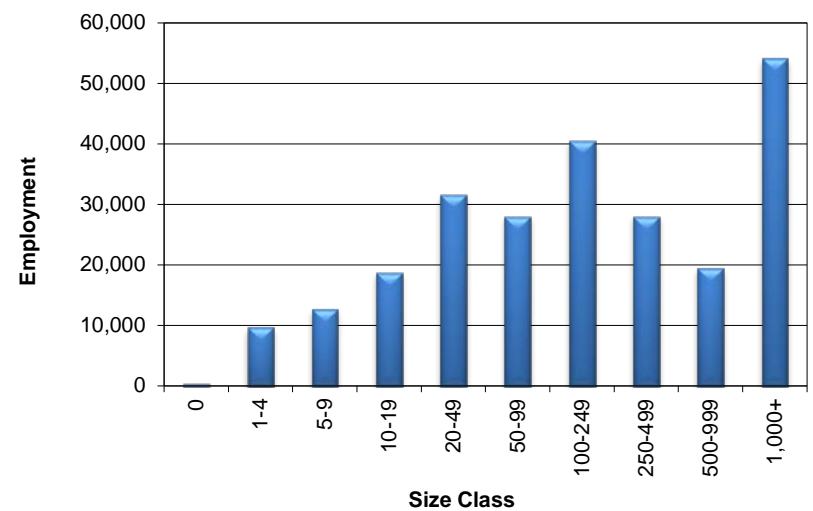
Coastal Bend WDA Average Weekly Wage

	Coastal Bend	Texas
2nd Quarter 2015	\$820.10	\$988.47
1st Quarter 2015	\$863.77	\$1,088.07
2nd Quarter 2014	\$829.17	\$973.16
Quarter Change	-\$43.67	-\$99.60
OTY Change	-\$9.07	\$15.31

NAICS Covered Employment Quarterly Data 2nd Quarter 2015

SUPER SECTOR	Employment	Change	
		Quarter	Year
Construction	19,559	-273	-248
Education & Health Services	37,684	444	474
Federal	7,710	-53	-74
Financial Activities	10,330	-63	-77
Information	2,289	131	-111
Leisure & Hospitality	31,879	2,031	955
Local	29,288	46	-2
Manufacturing	11,240	-210	-522
Natural Resources & Mining	14,858	-3,047	-3,933
Nonclassified	48	18	18
Other Services	7,129	-8	-465
Professional & Business Services	18,190	-388	626
State	9,492	87	212
Trade, Transportation, & Utilities	44,135	-258	1
TOTAL	243,831	-1,543	-3,146

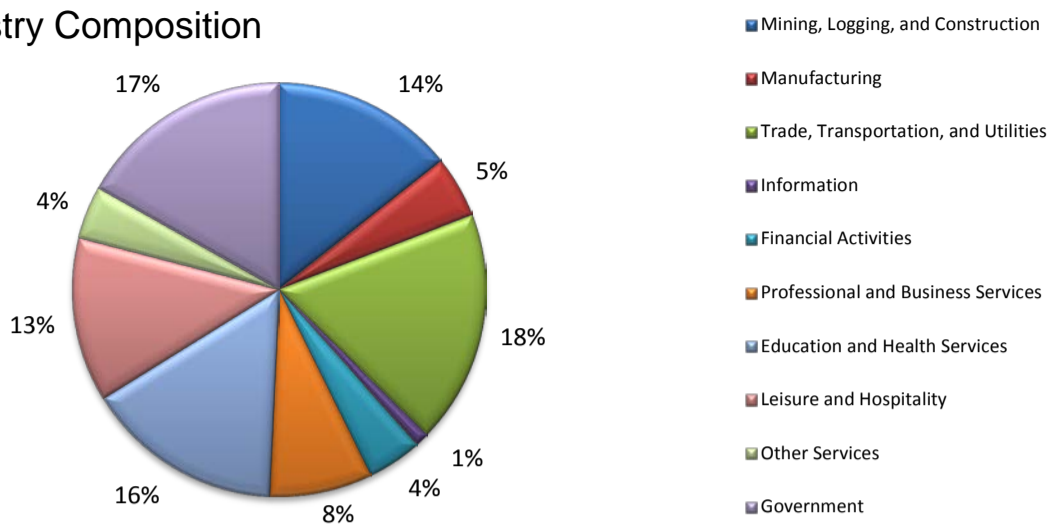
Size Class Employment Composition 2nd Quarter 2015



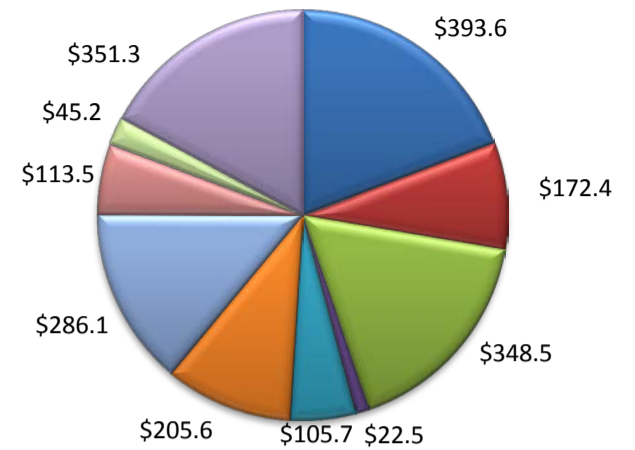
*Counties in WDA: Aransas, Bee, Brooks, Duval, Jim Wells, Kenedy, Kleberg, Live Oak, McMullen, Nueces, Refugio, & San Patricio

(Aransas, Nueces, San Patricio)

Industry Composition



Wages by Industry (in millions)
2nd Quarter 2015



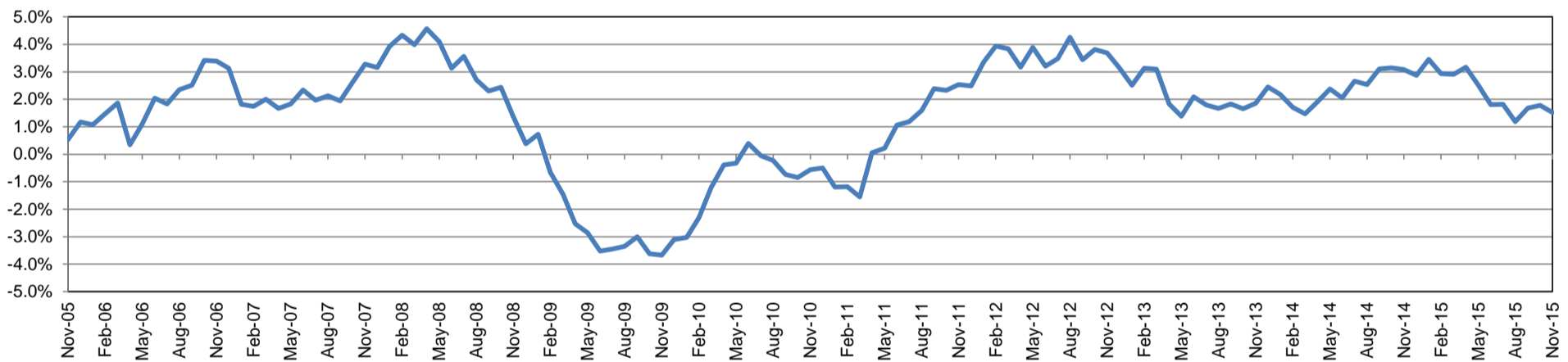
Employment by Industry

	Nov-15	Oct-15	Nov-14	Monthly Change		Annual Change	
				Actual	%	Actual	%
Total Nonfarm	200,800	200,300	197,800	500	0.3%	3,000	1.5%
Mining, Logging, and Construction	28,700	28,700	27,200	0	0.0%	1,500	5.5%
Manufacturing	9,700	9,700	10,000	0	0.0%	-300	-3.0%
Trade, Transportation, and Utilities	36,600	35,800	36,300	800	2.2%	300	0.8%
Information	2,200	2,200	2,100	0	0.0%	100	4.8%
Financial Activities	8,600	8,600	8,600	0	0.0%	0	0.0%
Professional and Business Services	16,100	16,400	16,300	-300	-1.8%	-200	-1.2%
Education and Health Services	31,000	31,000	30,200	0	0.0%	800	2.7%
Leisure and Hospitality	25,800	25,900	25,100	-100	-0.4%	700	2.8%
Other Services	8,300	8,300	8,200	0	0.0%	100	1.2%
Government	33,800	33,700	33,800	100	0.3%	0	0.0%

Industry Size Class June 2015

Size Class	Employees per firm	Number of Firms	Employment in Size Class	% Total Employment
9	1000+	19	42,098	22.3%
8	500-999	20	13,790	7.3%
7	250-499	56	18,769	9.9%
6	100-249	215	33,145	17.5%
5	50-99	333	23,092	12.2%
4	20-49	836	25,621	13.6%
3	10-19	1,095	14,984	7.9%
2	5-9	1,532	10,184	5.4%
1	1-4	3,524	7,325	3.9%
0	0	626	0	0.0%
Total		8,256	189,008	100.0%

Annual Growth Rate for Total Nonagricultural Employment



Unemployment Information (all estimates in thousands)

	Corpus Christi MSA				Texas (Actual)				United States (Actual)			
	C.L.F.	Emp.	Unemp.	Rate	C.L.F.	Emp.	Unemp.	Rate	C.L.F.	Emp.	Unemp.	Rate
Nov-15	212.9	201.3	11.5	5.4	13,100.3	12,506.6	593.7	4.5	157,340.0	149,766.0	7,573.0	4.8
Oct-15	212.2	201.1	11.0	5.2	13,069.1	12,485.2	583.9	4.5	157,313.0	149,716.0	7,597.0	4.8
Nov-14	214.1	203.8	10.3	4.8	13,202.8	12,614.3	588.6	4.5	156,297.0	147,666.0	8,630.0	5.5

Historical Unemployment Rates

