

# Coastal Bend Workforce Area

(Not Seasonally Adjusted Unemployment Rates by WDA, MSA, & County)

| Area           | Area Type | Latest Monthly Data<br>May 2015 |             |              |      |      |      | Previous Monthly Data<br>April 2015 |             |              |      | Year Ago<br>May 2014 |             |              |      |
|----------------|-----------|---------------------------------|-------------|--------------|------|------|------|-------------------------------------|-------------|--------------|------|----------------------|-------------|--------------|------|
|                |           | Labor Force                     | Employment  | Unemployment | Rate | M+-  | Y+-  | Labor Force                         | Employment  | Unemployment | Rate | Labor Force          | Employment  | Unemployment | Rate |
| United States  | Nation    | 157,469,000                     | 148,795,000 | 8,674,000    | 5.5  | 0.1  | -0.8 | 157,072,000                         | 148,523,000 | 8,549,000    | 5.4  | 155,629,000          | 145,868,000 | 9,761,000    | 6.3  |
| Texas          | State     | 13,139,730                      | 12,579,809  | 559,921      | 4.3  | 0.1  | -0.8 | 13,154,808                          | 12,596,838  | 557,970      | 4.2  | 13,063,371           | 12,393,855  | 669,516      | 5.1  |
| Corpus Christi | MSA       | 212,850                         | 202,896     | 9,954        | 4.7  | 0.2  | -0.4 | 213,496                             | 203,872     | 9,624        | 4.5  | 211,851              | 201,009     | 10,842       | 5.1  |
| Coastal Bend   | WDA       | 280,789                         | 266,843     | 13,946       | 5.0  | 0.2  | -0.1 | 281,067                             | 267,689     | 13,378       | 4.8  | 278,572              | 264,345     | 14,227       | 5.1  |
| Aransas        | County    | 10,224                          | 9,771       | 453          | 4.4  | 0.0  | -0.9 | 10,245                              | 9,793       | 452          | 4.4  | 10,209               | 9,663       | 546          | 5.3  |
| Bee            | County    | 11,126                          | 10,502      | 624          | 5.6  | 0.2  | 0.1  | 11,024                              | 10,427      | 597          | 5.4  | 11,012               | 10,411      | 601          | 5.5  |
| Brooks         | County    | 2,700                           | 2,465       | 235          | 8.7  | 0.5  | 1.7  | 2,682                               | 2,463       | 219          | 8.2  | 2,728                | 2,536       | 192          | 7.0  |
| Duval          | County    | 5,887                           | 5,457       | 430          | 7.3  | 0.4  | 1.9  | 5,845                               | 5,441       | 404          | 6.9  | 5,693                | 5,384       | 309          | 5.4  |
| Jim Wells      | County    | 20,812                          | 19,348      | 1,464        | 7.0  | 0.4  | 1.8  | 20,719                              | 19,361      | 1,358        | 6.6  | 20,271               | 19,212      | 1,059        | 5.2  |
| Kenedy         | County    | 376                             | 367         | 9            | 2.4  | 0.2  | -0.2 | 372                                 | 364         | 8            | 2.2  | 346                  | 337         | 9            | 2.6  |
| Kleberg        | County    | 15,453                          | 14,640      | 813          | 5.3  | 0.3  | 0.0  | 15,470                              | 14,701      | 769          | 5.0  | 15,586               | 14,755      | 831          | 5.3  |
| Live Oak       | County    | 6,510                           | 6,280       | 230          | 3.5  | 0.3  | 0.1  | 6,406                               | 6,198       | 208          | 3.2  | 6,249                | 6,035       | 214          | 3.4  |
| McMullen       | County    | 1,350                           | 1,334       | 16           | 1.2  | -0.1 | -0.1 | 1,345                               | 1,327       | 18           | 1.3  | 1,139                | 1,124       | 15           | 1.3  |
| Nueces         | County    | 171,306                         | 163,666     | 7,640        | 4.5  | 0.2  | -0.5 | 171,814                             | 164,486     | 7,328        | 4.3  | 170,518              | 162,075     | 8,443        | 5.0  |
| Refugio        | County    | 3,725                           | 3,554       | 171          | 4.6  | -0.1 | 0.4  | 3,708                               | 3,535       | 173          | 4.7  | 3,697                | 3,542       | 155          | 4.2  |
| San Patricio   | County    | 31,320                          | 29,459      | 1,861        | 5.9  | 0.0  | -0.1 | 31,437                              | 29,593      | 1,844        | 5.9  | 31,124               | 29,271      | 1,853        | 6.0  |

(M+-) Change in unemployment rate from last month (Increase) (Decrease)

(Y+-) Change in unemployment rate from last year (Increase) (Decrease)

- Earnings for all occupations Coastal Bend, expressed as hourly rate (TWC):

|              |                  |                     |                        |                                  |                     |
|--------------|------------------|---------------------|------------------------|----------------------------------|---------------------|
| Coastal Bend | All Occupations- | Average \$18.35/hr. | Entry level \$8.58/hr. | Experienced workers \$23.24/hr.  | Top 10% \$33.56/hr. |
| Texas        | All Occupations- | Average \$20.97/hr. | Entry level \$8.88/hr. | Experienced workers \$ 27.02/hr. | Top 10% \$39.64/hr. |

- Educational Attainment for population 25 years of age and older - Corpus Christi (Census American Fact Finder/American Community Survey):

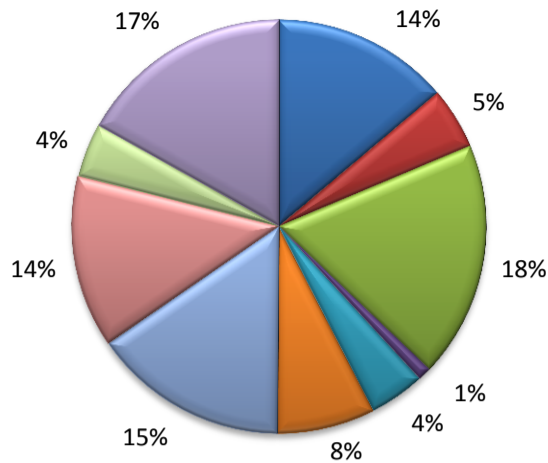
|   |      |                              |       |                   |       |                                  |      |
|---|------|------------------------------|-------|-------------------|-------|----------------------------------|------|
| Less than 9 <sup>th</sup> grade             | 8.7% | 12 <sup>th</sup> grade & GED | 27.7% | Associates degree | 7.0%  | Graduate or Professional degrees | 8.4% |
| 9 <sup>th</sup> thru 11 <sup>th</sup> grade | 9.3% | Some College                 | 25.1% | Bachelors degree  | 13.8% |                                  |      |

- Median earnings Corpus Christi by education for persons 25 years of age & up (Census AFF/ACS): **\$27,211** (\$36,380 male/ \$22,328 female)

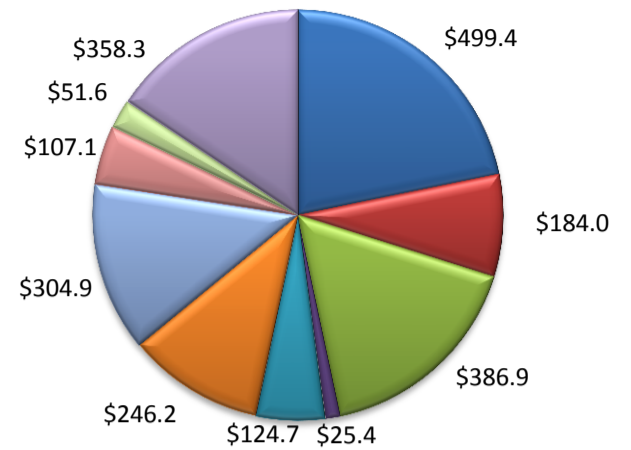
|                       |          |                            |          |                          |          |
|-----------------------|----------|----------------------------|----------|--------------------------|----------|
| Less than High School | \$15,437 | Some College or Associates | \$28,739 | Graduate or Professional | \$56,681 |
| High School & GED     | \$26,818 | Bachelor's                 | \$44,078 |                          |          |

(Aransas, Nueces, San Patricio)

Industry Composition



Wages by Industry (in millions)  
4th Quarter 2014



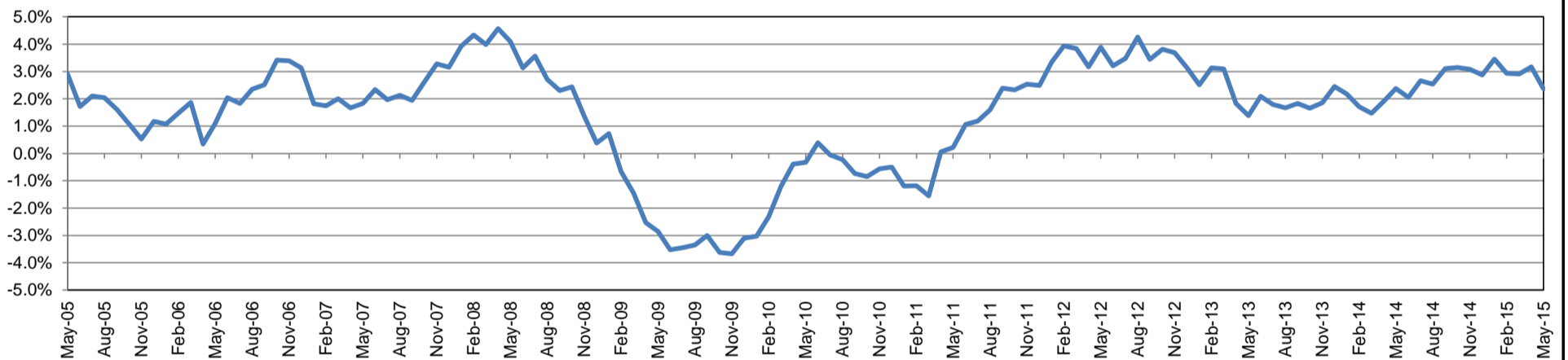
Employment by Industry

|                                      | May-15  | Apr-15  | May-14  | Monthly Change |       | Annual Change |       |
|--------------------------------------|---------|---------|---------|----------------|-------|---------------|-------|
|                                      |         |         |         | Actual         | %     | Actual        | %     |
| Total Nonfarm                        | 198,900 | 198,900 | 194,300 | 0              | 0.0%  | 4,600         | 2.4%  |
| Mining, Logging, and Construction    | 27,500  | 28,400  | 25,700  | -900           | -3.2% | 1,800         | 7.0%  |
| Manufacturing                        | 9,600   | 9,600   | 9,900   | 0              | 0.0%  | -300          | -3.0% |
| Trade, Transportation, and Utilities | 36,700  | 36,400  | 35,200  | 300            | 0.8%  | 1,500         | 4.3%  |
| Information                          | 2,100   | 2,100   | 2,200   | 0              | 0.0%  | -100          | -4.6% |
| Financial Activities                 | 8,600   | 8,500   | 8,300   | 100            | 1.2%  | 300           | 3.6%  |
| Professional and Business Services   | 15,200  | 15,400  | 15,800  | -200           | -1.3% | -600          | -3.8% |
| Education and Health Services        | 30,400  | 30,300  | 29,500  | 100            | 0.3%  | 900           | 3.1%  |
| Leisure and Hospitality              | 26,800  | 26,100  | 25,700  | 700            | 2.7%  | 1,100         | 4.3%  |
| Other Services                       | 8,400   | 8,300   | 8,200   | 100            | 1.2%  | 200           | 2.4%  |
| Government                           | 33,600  | 33,800  | 33,800  | -200           | -0.6% | -200          | -0.6% |

Industry Size Class

| Size Class | Employees per firm | Number of Firms | December 2014            |                    |        |
|------------|--------------------|-----------------|--------------------------|--------------------|--------|
|            |                    |                 | Employment in Size Class | % Total Employment |        |
| 9          | 1000+              | 18              | 42,145                   | 22.0%              |        |
| 8          | 500-999            | 23              | 16,466                   | 8.6%               |        |
| 7          | 250-499            | 58              | 20,238                   | 10.5%              |        |
| 6          | 100-249            | 223             | 33,997                   | 17.7%              |        |
| 5          | 50-99              | 321             | 22,093                   | 11.5%              |        |
| 4          | 20-49              | 817             | 24,732                   | 12.9%              |        |
| 3          | 10-19              | 1,052           | 14,406                   | 7.5%               |        |
| 2          | 5-9                | 1,526           | 10,188                   | 5.3%               |        |
| 1          | 1-4                | 3,689           | 7,565                    | 3.9%               |        |
| 0          | 0                  | 525             | 0                        | 0.0%               |        |
| Total      |                    |                 | 8,252                    | 191,830            | 100.0% |

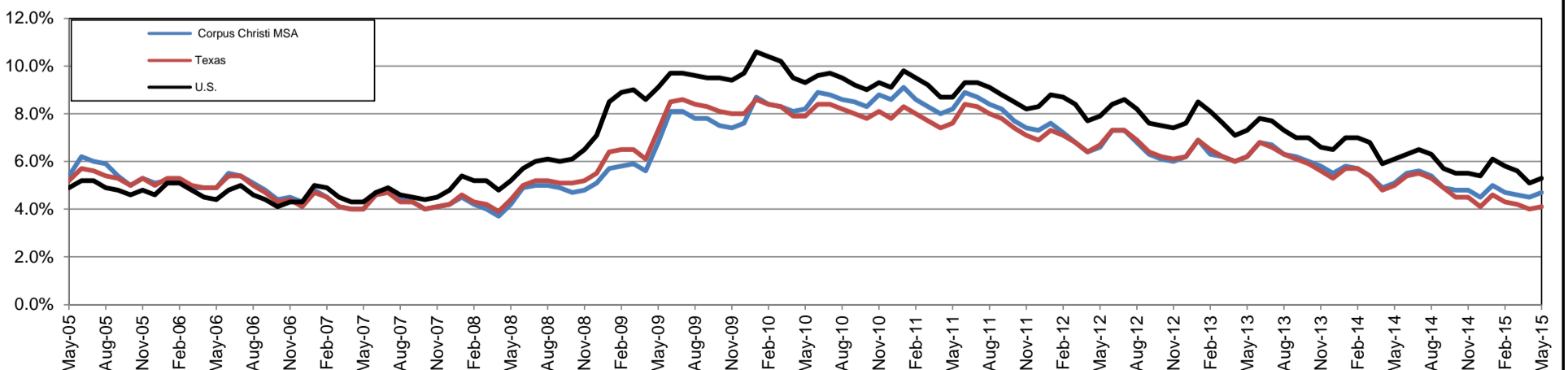
Annual Growth Rate for Total Nonagricultural Employment



Unemployment Information (all estimates in thousands)

|        | Corpus Christi MSA |       |        |      | Texas (Actual) |          |        |      | United States (Actual) |           |         |      |
|--------|--------------------|-------|--------|------|----------------|----------|--------|------|------------------------|-----------|---------|------|
|        | C.L.F.             | Emp.  | Unemp. | Rate | C.L.F.         | Emp.     | Unemp. | Rate | C.L.F.                 | Emp.      | Unemp.  | Rate |
| May-15 | 212.9              | 202.9 | 10.0   | 4.7  | 13,114.0       | 12,575.3 | 538.7  | 4.1  | 157,719.0              | 149,349.0 | 8,370.0 | 5.3  |
| Apr-15 | 213.5              | 203.9 | 9.6    | 4.5  | 13,094.5       | 12,573.1 | 521.4  | 4.0  | 156,554.0              | 148,587.0 | 7,966.0 | 5.1  |
| May-14 | 211.8              | 201.0 | 10.8   | 5.1  | 13,094.8       | 12,436.9 | 657.9  | 5.0  | 155,841.0              | 146,398.0 | 9,443.0 | 6.1  |

Historical Unemployment Rates

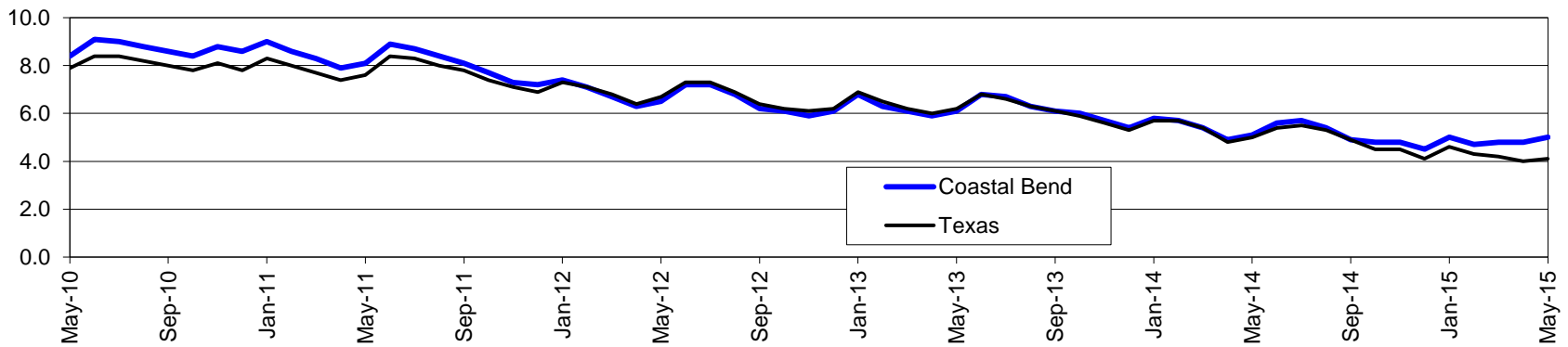


# Coastal Bend Workforce Development Area\*

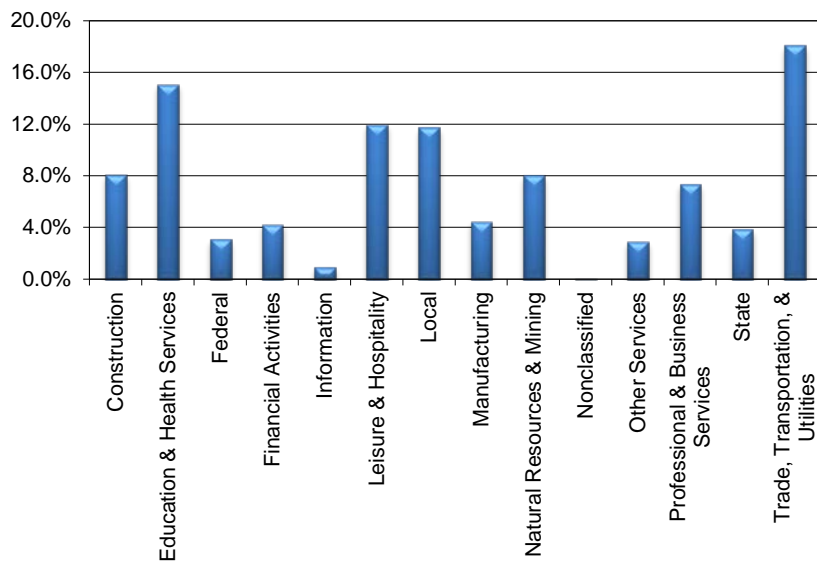
May 2015

| Coastal Bend WDA |         |          |            |      | Texas  |            |            |            |      |
|------------------|---------|----------|------------|------|--------|------------|------------|------------|------|
|                  | CLF     | Employed | Unemployed | Rate |        | CLF        | Employed   | Unemployed | Rate |
| May-15           | 280,789 | 266,843  | 13,946     | 5.0  | May-15 | 13,114,000 | 12,575,341 | 538,659    | 4.1  |
| Apr-15           | 281,067 | 267,689  | 13,378     | 4.8  | Apr-15 | 13,094,520 | 12,573,130 | 521,390    | 4.0  |
| May-14           | 278,572 | 264,345  | 14,227     | 5.1  | May-14 | 13,094,829 | 12,436,901 | 657,928    | 5.0  |

## Historical Unemployment Rates



## Coastal Bend WDA Industry Composition 4th Quarter 2014



## Total WDA Claims

### Continued Claims for the Week of the 12th

|           | May-15 | Apr-15 | May-14 | OTY   |
|-----------|--------|--------|--------|-------|
| Continued | 4,715  | 4,435  | 2,567  | 2,148 |

### Texas Unemployment Insurance Claims

#### Continued Claims for the Week of the 12th

|           | May-15  | Apr-15  | May-14  | OTY    |
|-----------|---------|---------|---------|--------|
| Continued | 138,421 | 136,451 | 120,452 | 17,969 |

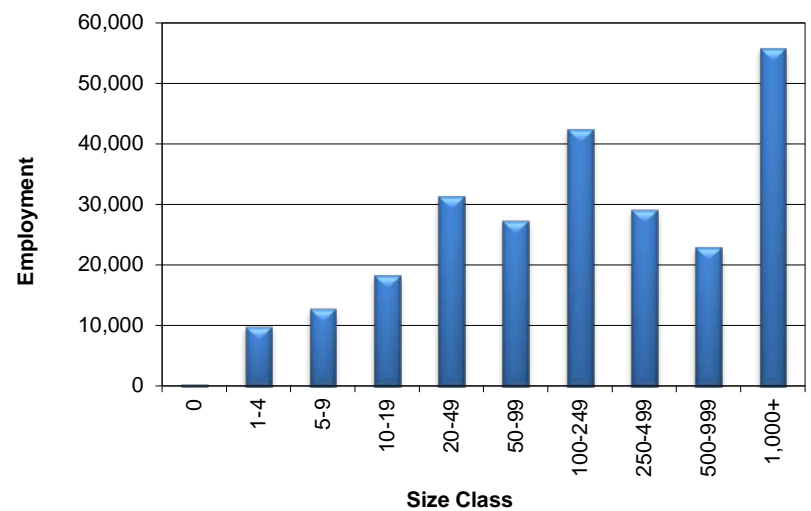
## Coastal Bend WDA Average Weekly Wage

|                  | Coastal Bend | Texas      |
|------------------|--------------|------------|
| 4th Quarter 2014 | \$911.77     | \$1,071.29 |
| 3rd Quarter 2014 | \$845.95     | \$987.96   |
| 4th Quarter 2013 | \$860.03     | \$1,026.57 |
| Quarter Change   | \$65.82      | \$83.33    |
| OTY Change       | \$51.74      | \$44.72    |

## NAICS Covered Employment Quarterly Data 4th Quarter 2014

| SUPER SECTOR                       | Employment     | Change       |              |
|------------------------------------|----------------|--------------|--------------|
|                                    |                | Quarter      | Year         |
| Construction                       | 20,303         | 225          | 687          |
| Education & Health Services        | 37,712         | 463          | -355         |
| Federal                            | 7,741          | -60          | -262         |
| Financial Activities               | 10,694         | 102          | 608          |
| Information                        | 2,336          | -35          | -60          |
| Leisure & Hospitality              | 29,978         | -1,360       | 979          |
| Local                              | 29,365         | 1,940        | -83          |
| Manufacturing                      | 11,158         | -703         | -391         |
| Natural Resources & Mining         | 20,174         | 260          | 1,317        |
| Nonclassified                      | 38             | 3            | -4           |
| Other Services                     | 7,388          | -148         | 122          |
| Professional & Business Services   | 18,447         | 550          | 877          |
| State                              | 9,728          | 1,212        | 273          |
| Trade, Transportation, & Utilities | 45,267         | 696          | 1,457        |
| <b>TOTAL</b>                       | <b>250,329</b> | <b>3,145</b> | <b>5,165</b> |

## Size Class Employment Composition 4th Quarter 2014



\*Counties in WDA: Aransas, Bee, Brooks, Duval, Jim Wells, Kenedy, Kleberg, Live Oak, McMullen, Nueces, Refugio, & San Patricio