

Coastal Bend Workforce Area

(Not Seasonally Adjusted Unemployment Rates by WDA, MSA, & County)

Area	Area Type	Latest Monthly Data March 2016						Previous Monthly Data February 2016				Year Ago March 2015			
		Labor Force	Employment	Unemployment	Rate	M+-	Y+-	Labor Force	Employment	Unemployment	Rate	Labor Force	Employment	Unemployment	Rate
United States	Nation	159,286,000	151,320,000	7,966,000	5.0	0.1	-0.5	158,890,000	151,074,000	7,815,000	4.9	156,890,000	148,333,000	8,557,000	5.5
Texas	State	13,273,740	12,696,526	577,214	4.3	0.0	-0.1	13,215,921	12,641,066	574,855	4.3	13,025,343	12,455,454	569,889	4.4
Corpus Christi	MSA	213,528	201,543	11,985	5.6	0.3	1.9	212,319	201,018	11,301	5.3	207,536	197,720	9,816	4.7
Coastal Bend	WDA	275,167	258,083	17,084	6.2	0.4	1.3	273,429	257,583	15,846	5.8	271,511	258,115	13,396	4.9
Aransas	County	10,349	9,790	559	5.4	0.1	0.6	10,275	9,733	542	5.3	10,105	9,620	485	4.8
Bee	County	10,475	9,703	772	7.4	0.8	1.8	10,364	9,685	679	6.6	10,476	9,893	583	5.6
Brooks	County	2,591	2,277	314	12.1	1.5	4.2	2,560	2,288	272	10.6	2,673	2,462	211	7.9
Duval	County	5,188	4,600	588	11.3	1.0	4.7	5,144	4,612	532	10.3	5,457	5,096	361	6.6
Jim Wells	County	18,933	17,006	1,927	10.2	1.3	4.0	18,801	17,132	1,669	8.9	19,709	18,495	1,214	6.2
Kenedy	County	273	261	12	4.4	1.0	2.0	263	254	9	3.4	336	328	8	2.4
Kleberg	County	14,304	13,321	983	6.9	0.5	1.6	14,167	13,255	912	6.4	14,940	14,150	790	5.3
Live Oak	County	5,669	5,385	284	5.0	0.2	1.3	5,656	5,386	270	4.8	5,950	5,728	222	3.7
McMullen	County	921	899	22	2.4	0.8	0.2	914	899	15	1.6	986	964	22	2.2
Nueces	County	171,707	162,510	9,197	5.4	0.3	0.9	170,823	162,124	8,699	5.1	166,814	159,358	7,456	4.5
Refugio	County	3,285	3,088	197	6.0	0.2	1.1	3,241	3,054	187	5.8	3,448	3,279	169	4.9
San Patricio	County	31,472	29,243	2,229	7.1	0.5	1.0	31,221	29,161	2,060	6.6	30,617	28,742	1,875	6.1

(M+-) Change in unemployment rate from last month (Increase) (Decrease)

(Y+-) Change in unemployment rate from last year (Increase) (Decrease)

- Earnings for all occupations Coastal Bend, expressed as hourly rate (TWC):

Coastal Bend	All Occupations-	Average \$18.35/hr.	Entry level \$8.58/hr.	Experienced workers \$23.24/hr.	Top 10% \$33.56/hr.
Texas	All Occupations-	Average \$20.97/hr.	Entry level \$8.88/hr.	Experienced workers \$ 27.02/hr.	Top 10% \$39.64/hr.

- Educational Attainment for population 25 years of age and older - Corpus Christi (Census American Fact Finder/American Community Survey):

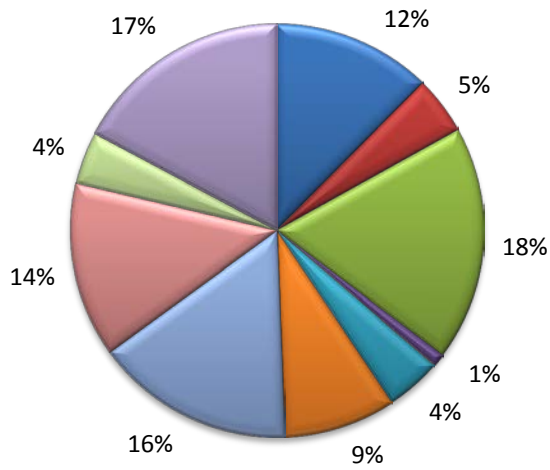
Less than 9th grade	8.7%	12th grade & GED	27.7%	Associates degree	7.0%	Graduate or Professional degrees	8.4%
9th thru 11th grade	9.3%	Some College	25.1%	Bachelors degree	13.8%		

- Median earnings Corpus Christi by education for persons 25 years of age & up (Census AFF/ACS): **\$27,211** (\$36,380 male/ \$22,328 female)

Less than High School	\$15,437	Some College or Associates	\$28,739	Graduate or Professional	\$56,681
High School & GED	\$26,818	Bachelor's	\$44,078		

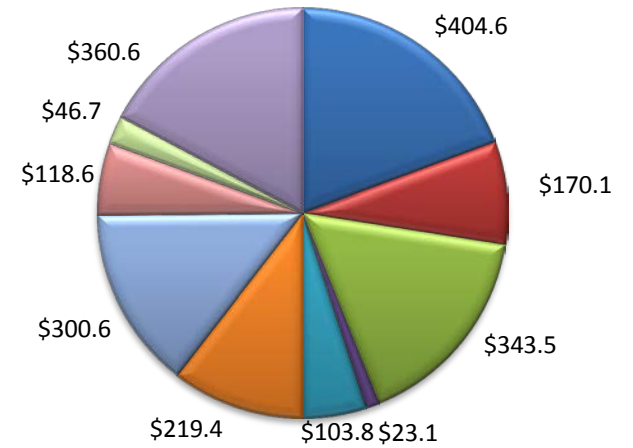
(Aransas, Nueces, San Patricio)

Industry Composition



- Mining, Logging, and Construction
- Manufacturing
- Trade, Transportation, and Utilities
- Information
- Financial Activities
- Professional and Business Services
- Education and Health Services
- Leisure and Hospitality
- Other Services
- Government

Wages by Industry (in millions)
3rd Quarter 2015



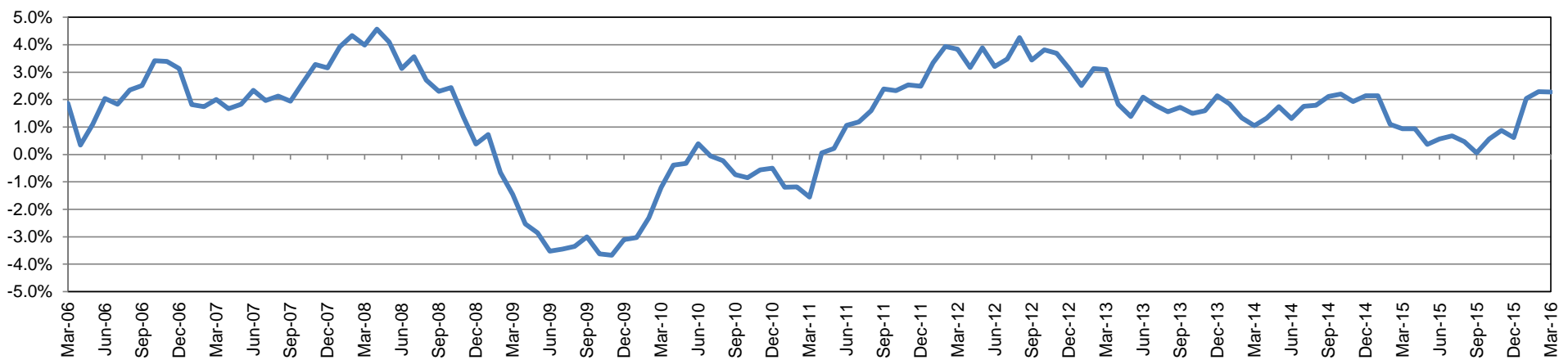
Employment by Industry

	Mar-16	Feb-16	Mar-15	Monthly Change		Annual Change	
				Actual	%	Actual	%
Total Nonfarm	198,000	197,000	193,600	1,000	0.5%	4,400	2.3%
Mining, Logging, and Construction	24,500	24,700	24,500	-200	-0.8%	0	0.0%
Manufacturing	9,000	9,100	9,400	-100	-1.1%	-400	-4.3%
Trade, Transportation, and Utilities	36,400	36,100	35,600	300	0.8%	800	2.3%
Information	2,000	2,000	1,900	0	0.0%	100	5.3%
Financial Activities	8,600	8,500	8,400	100	1.2%	200	2.4%
Professional and Business Services	17,300	17,300	16,800	0	0.0%	500	3.0%
Education and Health Services	30,900	31,100	29,500	-200	-0.6%	1,400	4.8%
Leisure and Hospitality	27,100	26,200	25,900	900	3.4%	1,200	4.6%
Other Services	8,100	8,000	8,000	100	1.3%	100	1.3%
Government	34,100	34,000	33,600	100	0.3%	500	1.5%

Industry Size Class

Size Class	Employees per firm	Number of Firms	September 2015		
			Employment in Size Class	% Total Employment	
9	1000+	18	41,193	21.9%	
8	500-999	22	15,469	8.2%	
7	250-499	49	16,399	8.7%	
6	100-249	228	35,361	18.8%	
5	50-99	313	21,609	11.5%	
4	20-49	860	26,114	13.9%	
3	10-19	1,081	14,749	7.8%	
2	5-9	1,515	10,074	5.3%	
1	1-4	3,569	7,401	3.9%	
0	0	640	0	0.0%	
Total			8,295	188,369	100.0%

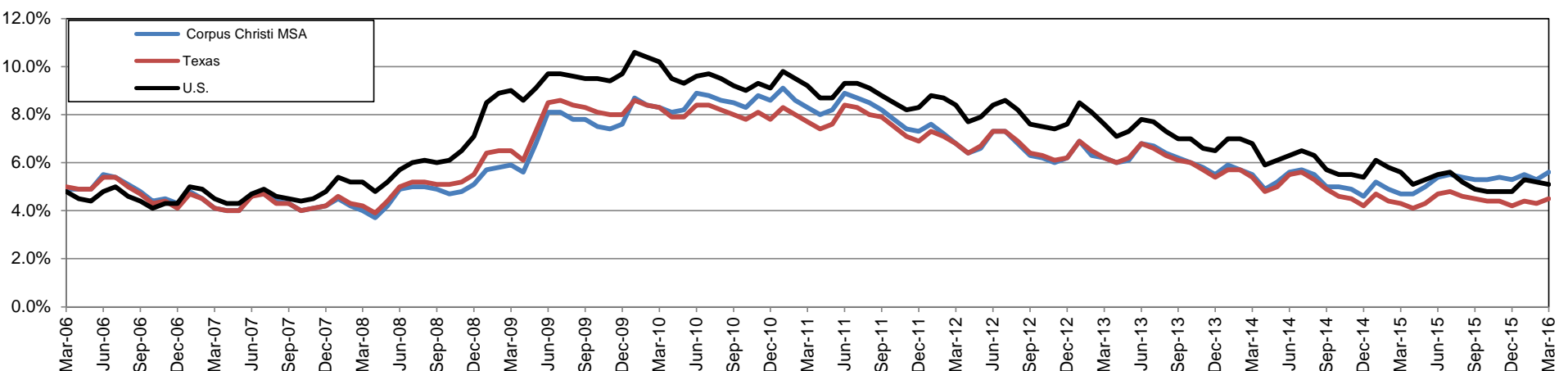
Annual Growth Rate for Total Nonagricultural Employment



Unemployment Information (all estimates in thousands)

	Corpus Christi MSA				Texas (Actual)				United States (Actual)			
	C.L.F.	Emp.	Unemp.	Rate	C.L.F.	Emp.	Unemp.	Rate	C.L.F.	Emp.	Unemp.	Rate
Mar-16	213.5	201.5	12.0	5.6	13,273.9	12,682.5	591.5	4.5	158,854.0	150,738.0	8,116.0	5.1
Feb-16	212.3	201.0	11.3	5.3	13,222.0	12,655.5	566.5	4.3	158,279.0	150,060.0	8,219.0	5.2
Mar-15	207.5	197.7	9.8	4.7	13,013.6	12,456.3	557.4	4.3	156,318.0	147,635.0	8,682.0	5.6

Historical Unemployment Rates

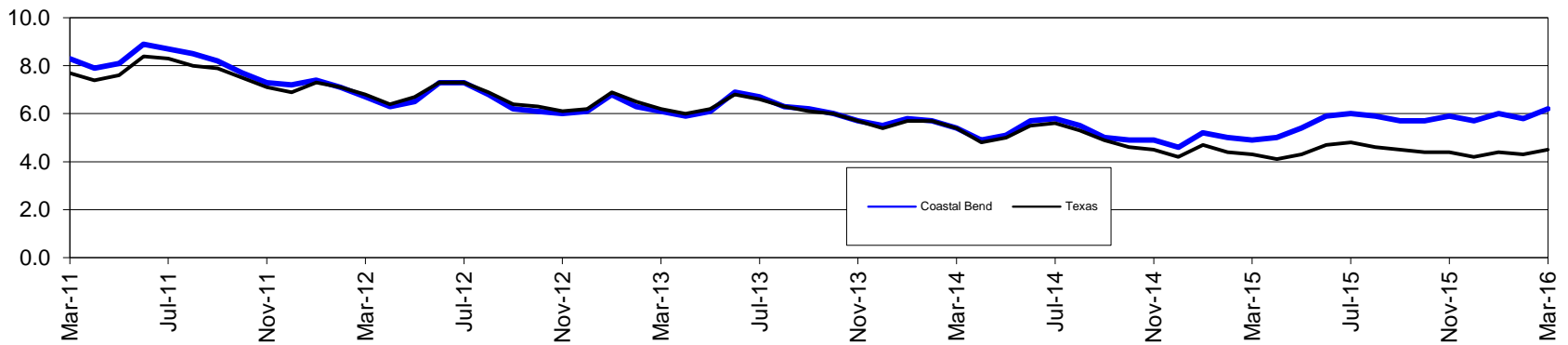


Coastal Bend Workforce Development Area*

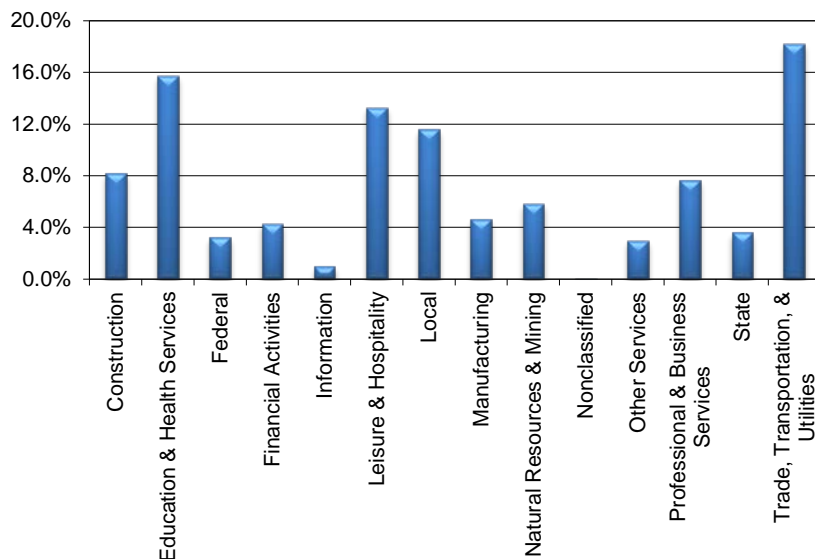
March 2016

Coastal Bend WDA					Texas				
	CLF	Employed	Unemployed	Rate		CLF	Employed	Unemployed	Rate
Mar-16	275,167	258,083	17,084	6.2	Mar-16	13,273,913	12,682,457	591,456	4.5
Feb-16	273,429	257,583	15,846	5.8	Feb-16	13,221,950	12,655,492	566,458	4.3
Mar-15	271,511	258,115	13,396	4.9	Mar-15	13,013,634	12,456,251	557,383	4.3

Historical Unemployment Rates



Coastal Bend WDA Industry Composition 3rd Quarter 2015



Total WDA Claims

Continued Claims for the Week of the 12th

	Mar-16	Feb-16	Mar-15	OTY
Continued	5,378	4,975	3,841	1,537

Texas Unemployment Insurance Claims

Continued Claims for the Week of the 12th

	Mar-16	Feb-16	Mar-15	OTY
Continued	147,348	145,342	129,728	17,620

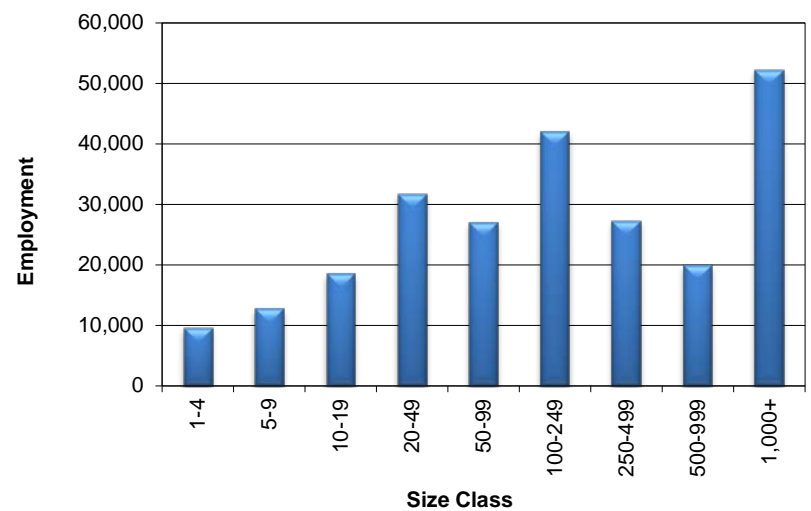
Coastal Bend WDA Average Weekly Wage

	Coastal Bend	Texas
3rd Quarter 2015	\$838.82	\$998.63
2nd Quarter 2015	\$821.94	\$988.42
3rd Quarter 2014	\$845.84	\$987.85
Quarter Change	\$16.88	\$10.21
OTY Change	-\$7.02	\$10.78

NAICS Covered Employment Quarterly Data 3rd Quarter 2015

SUPER SECTOR	Employment	Change	
		Quarter	Year
Construction	19,707	142	-371
Education & Health Services	37,877	196	593
Federal	7,778	-29	-23
Financial Activities	10,306	-22	-286
Information	2,288	-4	-83
Leisure & Hospitality	31,956	69	618
Local	27,850	-1,437	425
Manufacturing	11,034	-210	-827
Natural Resources & Mining	14,000	-846	-5,911
Nonclassified	74	10	39
Other Services	7,127	5	-409
Professional & Business Services	18,431	275	534
State	8,694	-798	178
Trade, Transportation, & Utilities	43,870	-263	-701
TOTAL	240,992	-2,912	-6,224

Size Class Employment Composition 3rd Quarter 2015



*Counties in WDA: Aransas, Bee, Brooks, Duval, Jim Wells, Kenedy, Kleberg, Live Oak, McMullen, Nueces, Refugio, & San Patricio