

Coastal Bend Workforce Area

(Not Seasonally Adjusted Unemployment Rates by WDA, MSA, & County)

Area	Area Type	Latest Monthly Data June 2016						Previous Monthly Data May 2016				Year Ago June 2015			
		Labor Force	Employment	Unemployment	Rate	M+-	Y+-	Labor Force	Employment	Unemployment	Rate	Labor Force	Employment	Unemployment	Rate
United States	Nation	158,880,000	151,097,000	7,783,000	4.9	0.2	-0.4	158,466,000	151,030,000	7,436,000	4.7	153,984,000	148,722,000	8,262,000	5.3
Texas	State	13,229,296	12,705,970	593,326	4.5	0.1	0.1	13,314,755	12,724,752	590,003	4.4	13,043,697	12,471,966	571,731	4.4
Corpus Christi	MSA	212,763	200,033	12,730	6.0	0.7	0.6	211,727	200,492	11,235	5.3	208,142	196,885	11,257	5.4
Coastal Bend	WDA	273,432	255,184	18,248	6.7	0.8	0.8	272,608	256,446	16,162	5.9	271,067	255,134	15,933	5.9
Aransas	County	10,314	9,747	567	5.5	0.6	0.4	10,283	9,780	503	4.9	10,124	9,604	520	5.1
Bee	County	10,640	9,761	879	8.3	1.0	1.3	10,639	9,867	772	7.3	10,479	9,746	733	7.0
Brooks	County	2,515	2,188	327	13.0	1.6	2.0	2,510	2,225	285	11.4	2,634	2,344	290	11.0
Duval	County	5,016	4,416	600	12.0	1.1	3.2	5,007	4,461	546	10.9	5,310	4,841	469	8.8
Jim Wells	County	18,288	16,225	2,063	11.3	1.1	2.5	18,233	16,367	1,866	10.2	19,522	17,796	1,726	8.8
Kenedy	County	242	231	11	4.5	0.5	0.9	251	241	10	4.0	306	295	11	3.6
Kleberg	County	14,061	12,983	1,078	7.7	1.1	1.0	14,329	13,386	943	6.6	14,444	13,471	973	6.7
Live Oak	County	5,809	5,494	315	5.4	0.6	1.0	5,759	5,481	278	4.8	5,893	5,632	261	4.4
McMullen	County	917	897	20	2.2	0.3	0.2	940	922	18	1.9	964	945	19	2.0
Nueces	County	171,077	161,314	9,763	5.7	0.7	0.5	170,183	161,614	8,569	5.0	167,394	158,700	8,694	5.2
Refugio	County	3,181	2,956	225	7.1	0.6	1.3	3,213	3,004	209	6.5	3,373	3,179	194	5.8
San Patricio	County	31,372	28,972	2,400	7.7	0.8	1.0	31,261	29,098	2,163	6.9	30,624	28,581	2,043	6.7

(M+-) Change in unemployment rate from last month (Increase) (Decrease)

(Y+-) Change in unemployment rate from last year (Increase) (Decrease)

- Earnings for all occupations Coastal Bend, expressed as hourly rate (TWC):

Coastal Bend	All Occupations-	Average \$18.35/hr.	Entry level \$8.58/hr.	Experienced workers \$23.24/hr.	Top 10% \$33.56/hr.
Texas	All Occupations-	Average \$20.97/hr.	Entry level \$8.88/hr.	Experienced workers \$ 27.02/hr.	Top 10% \$39.64/hr.

- Educational Attainment for population 25 years of age and older - Corpus Christi (Census American Fact Finder/American Community Survey):

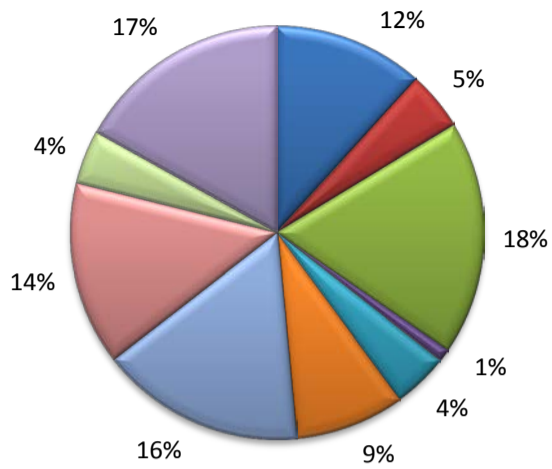
Less than 9th grade	8.7%	12th grade & GED	27.7%	Associates degree	7.0%	Graduate or Professional degrees	8.4%
9th thru 11th grade	9.3%	Some College	25.1%	Bachelors degree	13.8%		

- Median earnings Corpus Christi by education for persons 25 years of age & up (Census AFF/ACS): **\$27,211** (\$36,380 male/ \$22,328 female)

Less than High School	\$15,437	Some College or Associates	\$28,739	Graduate or Professional	\$56,681
High School & GED	\$26,818	Bachelor's	\$44,078		

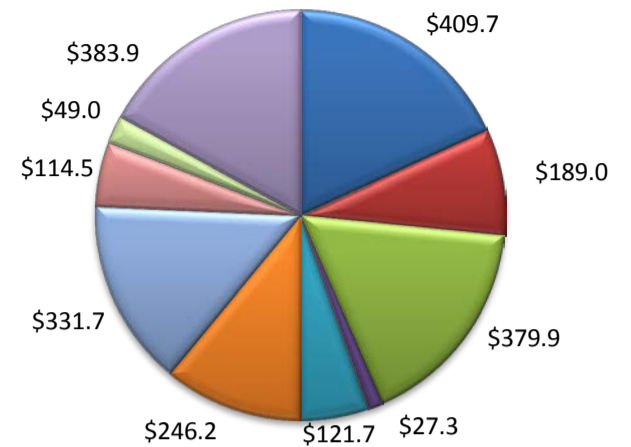
(Aransas, Nueces, San Patricio)

Industry Composition



- Mining, Logging, and Construction
- Manufacturing
- Trade, Transportation, and Utilities
- Information
- Financial Activities
- Professional and Business Services
- Education and Health Services
- Leisure and Hospitality
- Other Services
- Government

Wages by Industry (in millions)
4th Quarter 2015



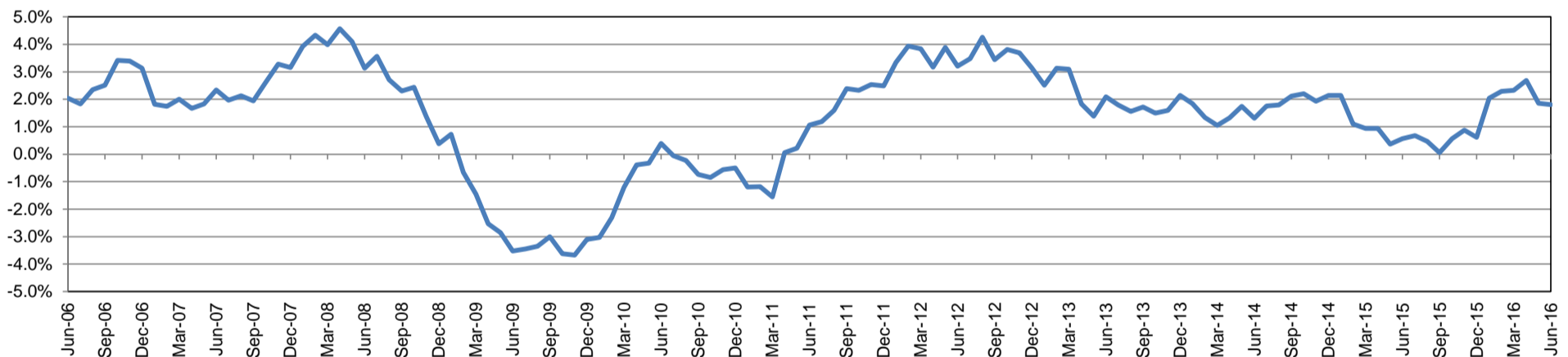
Employment by Industry

	Jun-16	May-16	Jun-15	Monthly Change		Annual Change	
				Actual	%	Actual	%
Total Nonfarm	197,700	197,400	194,200	300	0.2%	3,500	1.8%
Mining, Logging, and Construction	23,100	23,500	23,600	-400	-1.7%	-500	-2.1%
Manufacturing	9,100	9,000	9,400	100	1.1%	-300	-3.2%
Trade, Transportation, and Utilities	36,200	36,000	35,800	200	0.6%	400	1.1%
Information	2,000	2,000	2,100	0	0.0%	-100	-4.8%
Financial Activities	8,600	8,600	8,500	0	0.0%	100	1.2%
Professional and Business Services	16,900	16,800	16,600	100	0.6%	300	1.8%
Education and Health Services	31,600	31,500	29,600	100	0.3%	2,000	6.8%
Leisure and Hospitality	28,400	27,700	27,300	700	2.5%	1,100	4.0%
Other Services	8,300	8,200	8,200	100	1.2%	100	1.2%
Government	33,500	34,100	33,100	-600	-1.8%	400	1.2%

Industry Size Class

Size Class	Employees per firm	Number of Firms	December 2015	
			Employment in Size Class	% Total Employment
9	1000+	21	44,399	23.6%
8	500-999	19	13,026	6.9%
7	250-499	51	17,443	9.3%
6	100-249	223	33,827	18.0%
5	50-99	314	21,615	11.5%
4	20-49	843	25,507	13.6%
3	10-19	1,079	14,741	7.8%
2	5-9	1,501	9,995	5.3%
1	1-4	3,670	7,571	4.0%
0	0	585	0	0.0%
Total		8,306	188,124	100.0%

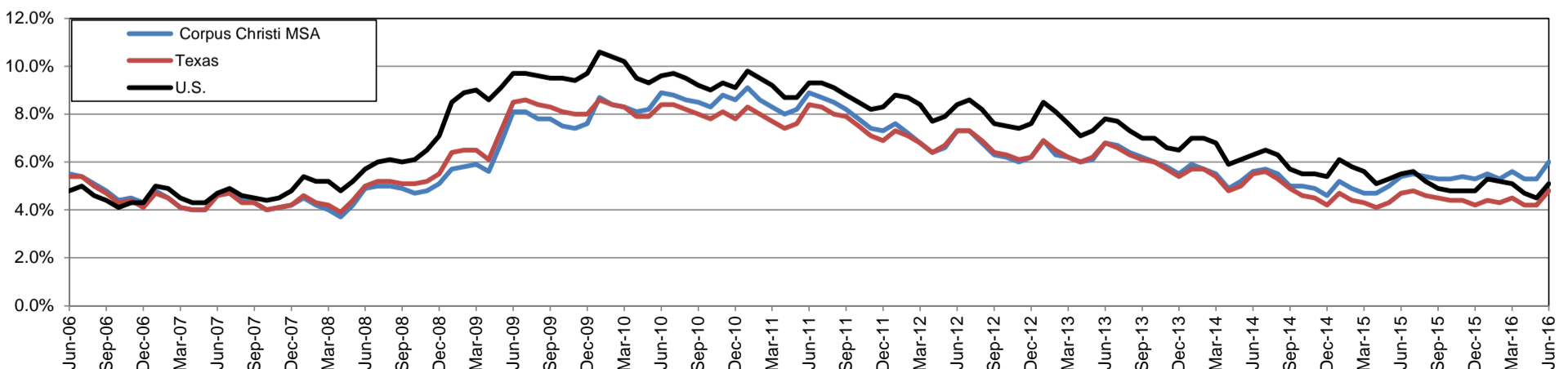
Annual Growth Rate for Total Nonagricultural Employment



Unemployment Information (all estimates in thousands)

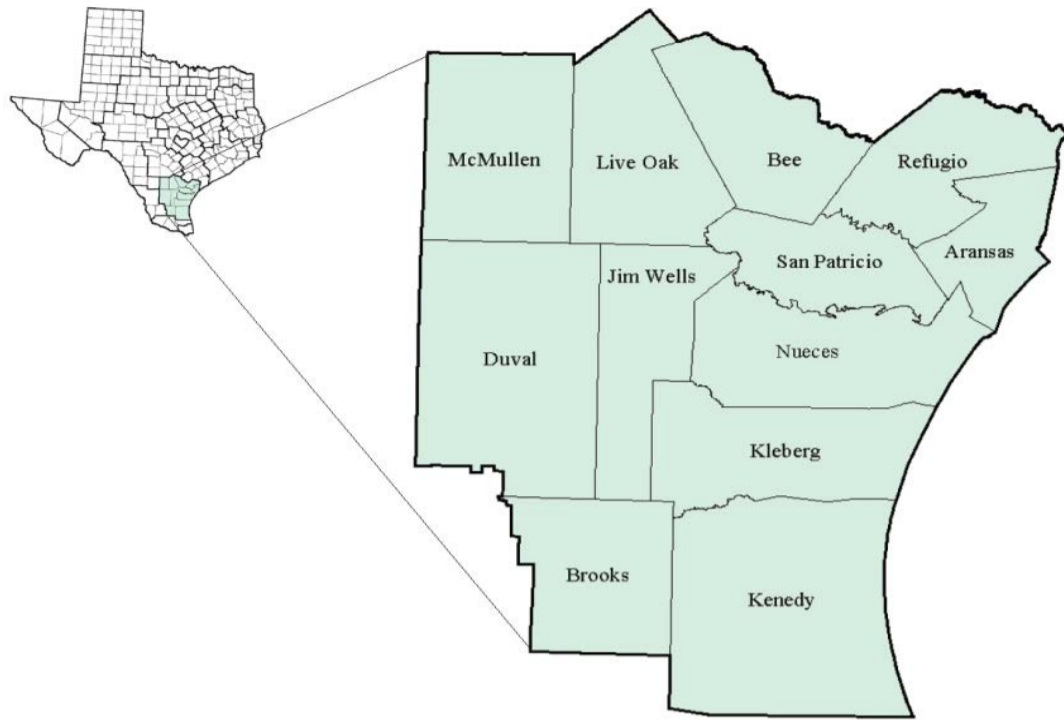
	Corpus Christi MSA				Texas (Actual)				United States (Actual)			
	C.L.F.	Emp.	Unemp.	Rate	C.L.F.	Emp.	Unemp.	Rate	C.L.F.	Emp.	Unemp.	Rate
Jun-16	212.8	200.0	12.7	6.0	13,338.8	12,694.2	644.7	4.8	160,135.0	151,990.0	8,144.0	5.1
May-16	211.7	200.5	11.2	5.3	13,281.1	12,722.3	558.8	4.2	158,800.0	151,594.0	7,207.0	4.5
Jun-15	208.1	196.9	11.3	5.4	13,127.1	12,504.1	623.0	4.7	158,283.0	149,645.0	8,638.0	5.5

Historical Unemployment Rates



Coastal Bend Workforce Development Area

June 2016



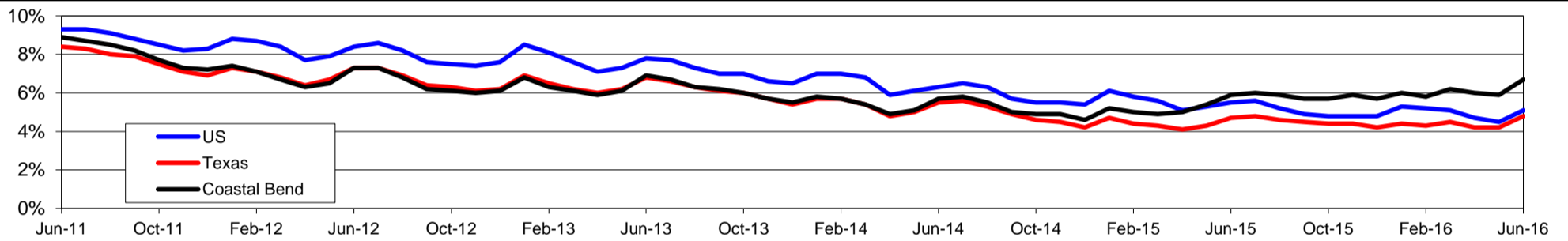
WDA Labor Force Statistics				
	Jun-16	May-16	Jun-15	OTY
CLF	273,432	272,608	271,067	2,365
Employed	255,184	256,446	255,134	50
Unemployed	18,248	16,162	15,933	2,315
Rate	6.7%	5.9%	5.9%	0.8%

Texas Labor Force Statistics				
	Jun-16	May-16	Jun-15	OTY
CLF	13,338,824	13,281,123	13,127,106	211,718
Employed	12,694,161	12,722,285	12,504,082	190,079
Unemployed	644,663	558,838	623,024	21,639
Rate	4.8%	4.2%	4.7%	0.1%

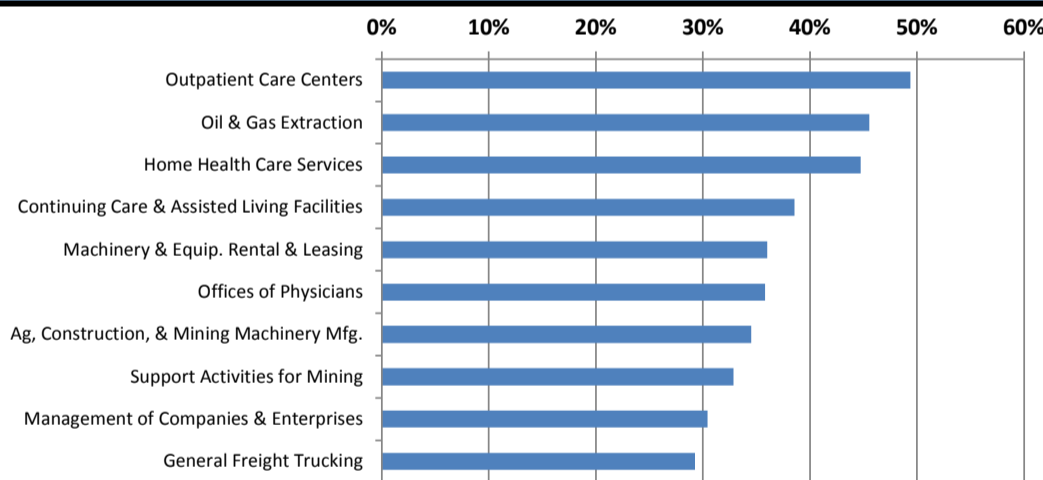
US Labor Force Statistics				
	Jun-16	May-16	Jun-15	OTY
CLF	160,135,000	158,800,000	158,283,000	1,852,000
Employed	151,990,000	151,594,000	149,645,000	2,345,000
Unemployed	8,144,000	7,207,000	8,638,000	-494,000
Rate	5.1%	4.5%	5.5%	-0.4%

Continued Claims for the Week of the 12th				
	Jun-16	May-16	Jun-15	OTY
WDA	5,279	5,219	4,865	414
Texas	155,999	148,489	148,789	7,210

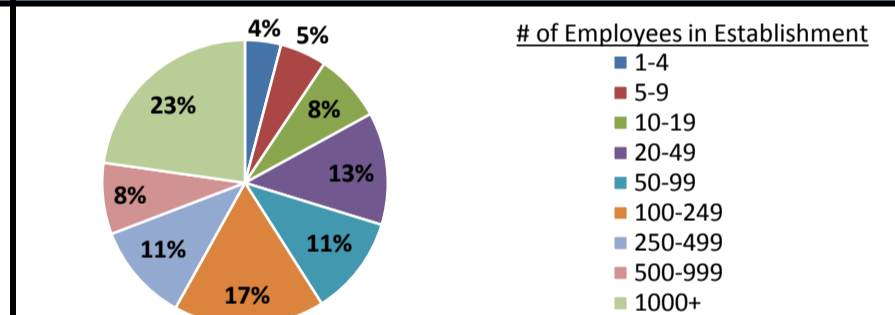
Historical Unemployment Rates



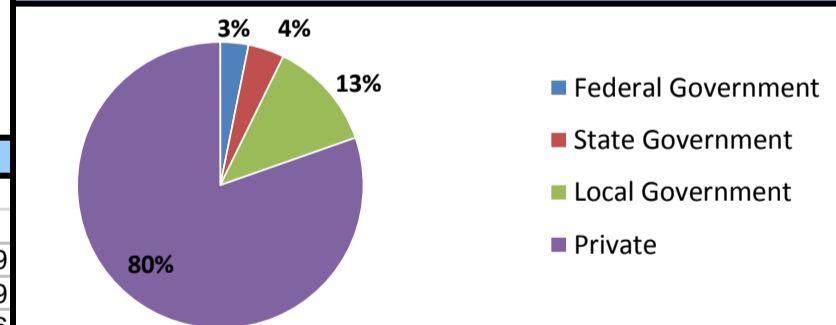
Projected Fastest Growing Industries in WDA (% growth 2012-2022)



Employment by Size Class (4th Quarter 2015)



Employment by Ownership (4th Quarter 2015)



Average Weekly Wage (4th Quarter 2015)

	Q4 2015	Q3 2015	Q4 2014	Change	
				Quarter	Year
WDA	\$897	\$840	\$916	\$57	-\$19
Texas	\$1,099	\$999	\$1,070	\$100	\$29
US	\$1,082	\$974	\$1,036	\$108	\$46

Employment by Industry (4th Quarter 2015, Percent Change)

Industry	Employment	% of total	% Change	
			Quarter	Year
Natural resources and mining	12,991	5.4%	-5.8%	-33.9%
Construction	20,483	8.5%	-1.6%	-5.7%
Manufacturing	14,061	5.8%	-1.8%	-6.7%
Trade, transportation and utilities	46,502	19.2%	0.8%	-2.3%
Information	2,480	1.0%	3.1%	1.0%
Financial activities	10,434	4.3%	-0.2%	-3.8%
Professional and business services	19,016	7.9%	-0.4%	0.8%
Education and health services	65,730	27.2%	6.1%	1.7%
Leisure and hospitality	31,296	12.9%	-4.8%	1.5%
Other services	6,825	2.8%	-5.0%	-8.5%
Public administration	11,941	4.9%	0.7%	3.7%
Total	241,759	100.0%	0.3%	-3.5%

Employment by Industry (4th Quarter 2015)

