

# Coastal Bend Workforce Area

(Not Seasonally Adjusted Unemployment Rates by WDA, MSA, & County)

Area	Area Type	Latest Monthly Data June 2015						Previous Monthly Data May 2015				Year Ago June 2014			
		Labor Force	Employment	Unemployment	Rate	M+-	Y+-	Labor Force	Employment	Unemployment	Rate	Labor Force	Employment	Unemployment	Rate
United States	Nation	157,037,000	148,739,000	8,299,000	5.3	-0.2	-0.8	157,469,000	148,795,000	8,674,000	5.5	155,700,000	146,247,000	9,453,000	6.1
Texas	State	13,086,613	12,541,835	544,778	4.2	-0.1	-0.8	13,139,791	12,579,921	559,870	4.3	13,077,218	12,418,413	658,805	5.0
Corpus Christi	MSA	211,241	200,730	10,511	5.0	0.3	-0.4	213,146	203,207	9,939	4.7	212,686	200,924	11,762	5.5
Coastal Bend	WDA	278,941	264,050	14,891	5.3	0.3	-0.3	281,093	267,163	13,930	5.0	279,571	263,979	15,592	5.6
Aransas	County	10,143	9,658	485	4.8	0.4	-0.9	10,239	9,785	454	4.4	10,250	9,666	584	5.7
Bee	County	10,977	10,290	687	6.3	0.7	0.0	11,127	10,502	625	5.6	11,118	10,420	698	6.3
Brooks	County	2,729	2,460	269	9.9	1.2	1.1	2,700	2,465	235	8.7	2,761	2,518	243	8.8
Duval	County	5,869	5,427	442	7.5	0.2	1.6	5,886	5,457	429	7.3	5,703	5,366	337	5.9
Jim Wells	County	21,056	19,435	1,621	7.7	0.7	2.0	20,817	19,352	1,465	7.0	20,473	19,304	1,169	5.7
Kenedy	County	371	360	11	3.0	0.6	0.4	376	367	9	2.4	346	337	9	2.6
Kleberg	County	15,009	14,102	907	6.0	0.7	-0.2	15,455	14,643	812	5.3	15,326	14,374	952	6.2
Live Oak	County	6,653	6,409	244	3.7	0.2	0.0	6,512	6,281	231	3.5	6,335	6,101	234	3.7
McMullen	County	1,317	1,300	17	1.3	0.2	-0.3	1,349	1,334	15	1.1	1,128	1,110	18	1.6
Nueces	County	170,030	161,918	8,112	4.8	0.4	-0.5	171,545	163,918	7,627	4.4	171,145	162,008	9,137	5.3
Refugio	County	3,719	3,537	182	4.9	0.3	0.3	3,725	3,555	170	4.6	3,695	3,525	170	4.6
San Patricio	County	31,068	29,154	1,914	6.2	0.3	-0.3	31,362	29,504	1,858	5.9	31,291	29,250	2,041	6.5

(M+-) Change in unemployment rate from last month (Increase) (Decrease)

(Y+-) Change in unemployment rate from last year (Increase) (Decrease)

- Earnings for all occupations Coastal Bend, expressed as hourly rate (TWC):

Coastal Bend	All Occupations-	Average \$18.35/hr.	Entry level \$8.58/hr.	Experienced workers \$23.24/hr.	Top 10% \$33.56/hr.
Texas	All Occupations-	Average \$20.97/hr.	Entry level \$8.88/hr.	Experienced workers \$ 27.02/hr.	Top 10% \$39.64/hr.

- Educational Attainment for population 25 years of age and older - Corpus Christi (Census American Fact Finder/American Community Survey):

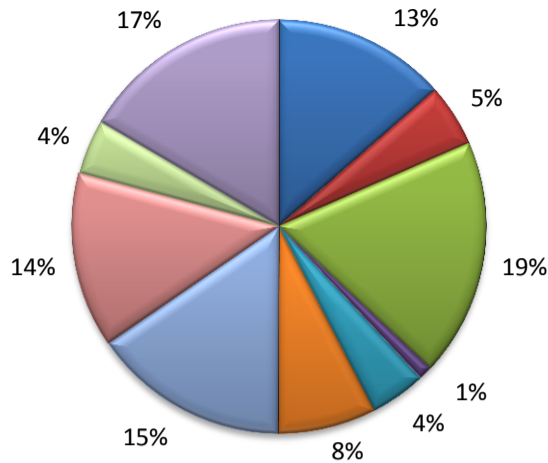
Less than 9 <sup>th</sup> grade	8.7%	12 <sup>th</sup> grade & GED	27.7%	Associates degree	7.0%	Graduate or Professional degrees	8.4%
9 <sup>th</sup> thru 11 <sup>th</sup> grade	9.3%	Some College	25.1%	Bachelors degree	13.8%		

- Median earnings Corpus Christi by education for persons 25 years of age & up (Census AFF/ACS): **\$27,211** (\$36,380 male/ \$22,328 female)

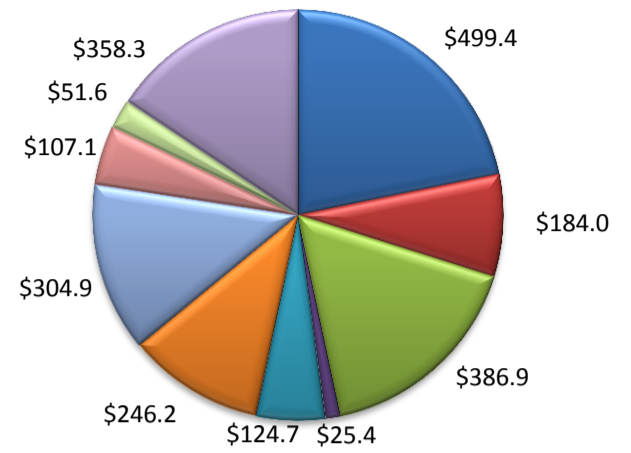
Less than High School	\$15,437	Some College or Associates	\$28,739	Graduate or Professional	\$56,681
High School & GED	\$26,818	Bachelor's	\$44,078		

(Aransas, Nueces, San Patricio)

Industry Composition



Wages by Industry (in millions)  
4th Quarter 2014



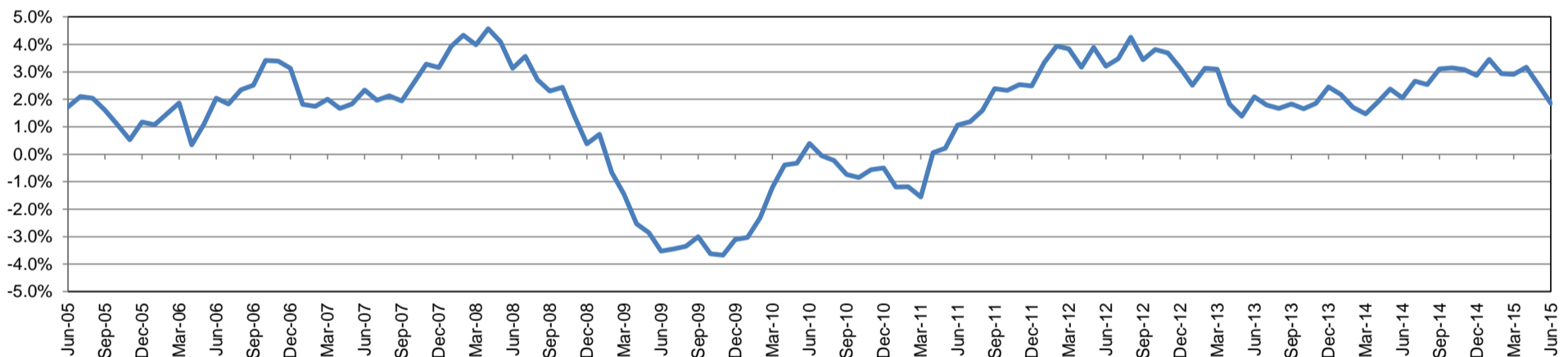
Employment by Industry

	Jun-15	May-15	Jun-14	Monthly Change		Annual Change	
				Actual	%	Actual	%
Total Nonfarm	198,100	199,200	194,500	-1,100	-0.6%	3,600	1.9%
Mining, Logging, and Construction	26,800	27,500	25,400	-700	-2.6%	1,400	5.5%
Manufacturing	9,700	9,600	10,000	100	1.0%	-300	-3.0%
Trade, Transportation, and Utilities	36,800	37,000	35,400	-200	-0.5%	1,400	4.0%
Information	2,100	2,100	2,200	0	0.0%	-100	-4.6%
Financial Activities	8,600	8,500	8,500	100	1.2%	100	1.2%
Professional and Business Services	15,200	15,300	15,700	-100	-0.7%	-500	-3.2%
Education and Health Services	30,400	30,400	29,600	0	0.0%	800	2.7%
Leisure and Hospitality	27,200	26,800	26,400	400	1.5%	800	3.0%
Other Services	8,500	8,400	8,300	100	1.2%	200	2.4%
Government	32,800	33,600	33,000	-800	-2.4%	-200	-0.6%

Industry Size Class

Size Class	Employees per firm	Number of Firms	December 2014		
			Employment in Size Class	% Total Employment	
9	1000+	18	42,145	22.0%	
8	500-999	23	16,466	8.6%	
7	250-499	58	20,238	10.5%	
6	100-249	223	33,997	17.7%	
5	50-99	321	22,093	11.5%	
4	20-49	817	24,732	12.9%	
3	10-19	1,052	14,406	7.5%	
2	5-9	1,526	10,188	5.3%	
1	1-4	3,689	7,565	3.9%	
0	0	525	0	0.0%	
Total			8,252	191,830	100.0%

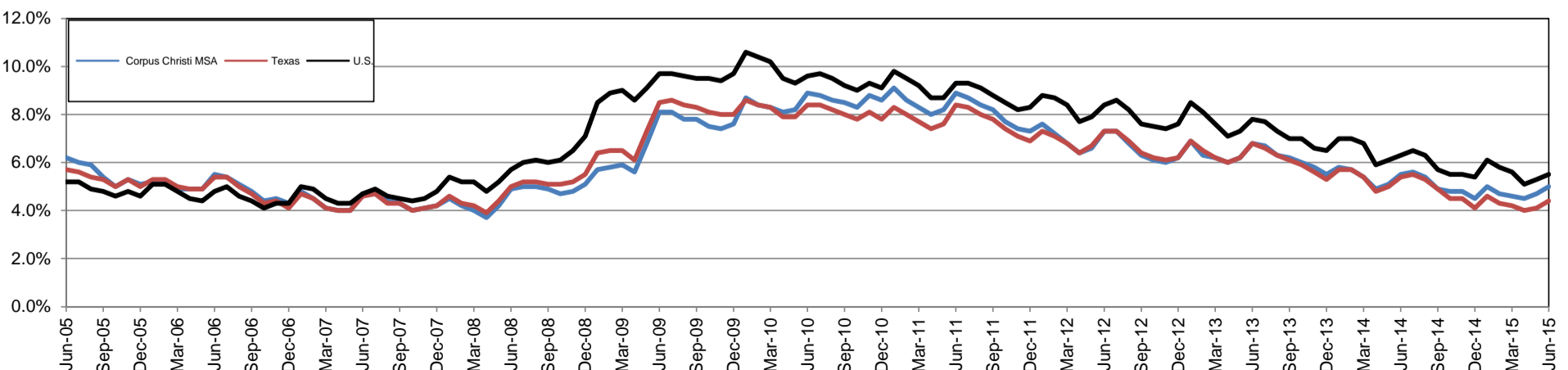
Annual Growth Rate for Total Nonagricultural Employment



Unemployment Information (all estimates in thousands)

	Corpus Christi MSA				Texas (Actual)				United States (Actual)			
	C.L.F.	Emp.	Unemp.	Rate	C.L.F.	Emp.	Unemp.	Rate	C.L.F.	Emp.	Unemp.	Rate
Jun-15	211.2	200.7	10.5	5.0	13,097.4	12,517.2	580.2	4.4	158,283.0	149,645.0	8,638.0	5.5
May-15	213.1	203.2	9.9	4.7	13,114.1	12,575.6	538.5	4.1	157,719.0	149,349.0	8,370.0	5.3
Jun-14	212.7	200.9	11.8	5.5	13,162.1	12,447.3	714.8	5.4	156,997.0	147,104.0	9,893.0	6.3

Historical Unemployment Rates

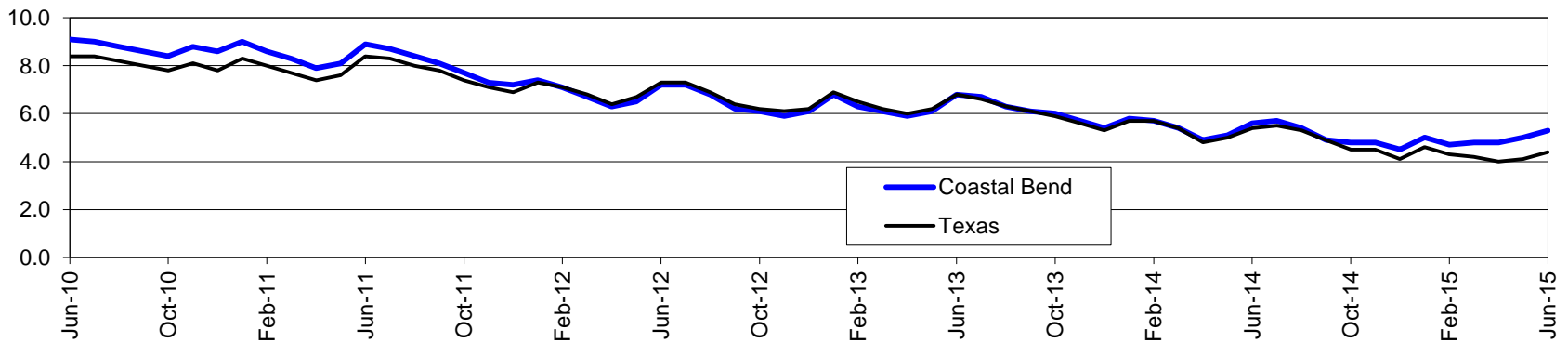


# Coastal Bend Workforce Development Area\*

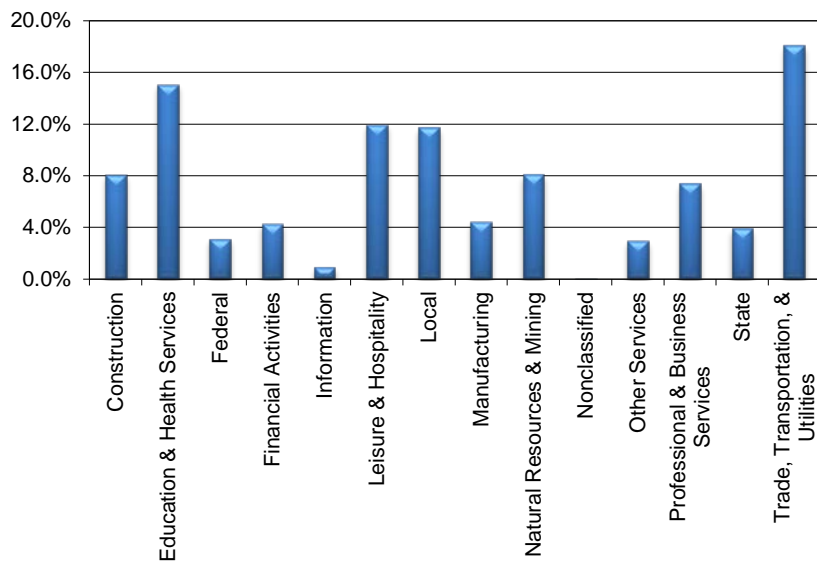
June 2015

Coastal Bend WDA					Texas				
	CLF	Employed	Unemployed	Rate		CLF	Employed	Unemployed	Rate
Jun-15	278,941	264,050	14,891	5.3	Jun-15	13,097,438	12,517,239	580,199	4.4
May-15	281,093	267,163	13,930	5.0	May-15	13,114,119	12,575,647	538,472	4.1
Jun-14	279,571	263,979	15,592	5.6	Jun-14	13,162,061	12,447,300	714,761	5.4

## Historical Unemployment Rates



## Coastal Bend WDA Industry Composition 4th Quarter 2014



## Total WDA Claims

### Continued Claims for the Week of the 12th

	Jun-15	May-15	Jun-14	OTY
Continued	4,839	4,742	2,792	2,047

### Texas Unemployment Insurance Claims

#### Continued Claims for the Week of the 12th

	Jun-15	May-15	Jun-14	OTY
Continued	147,554	139,731	126,752	20,802

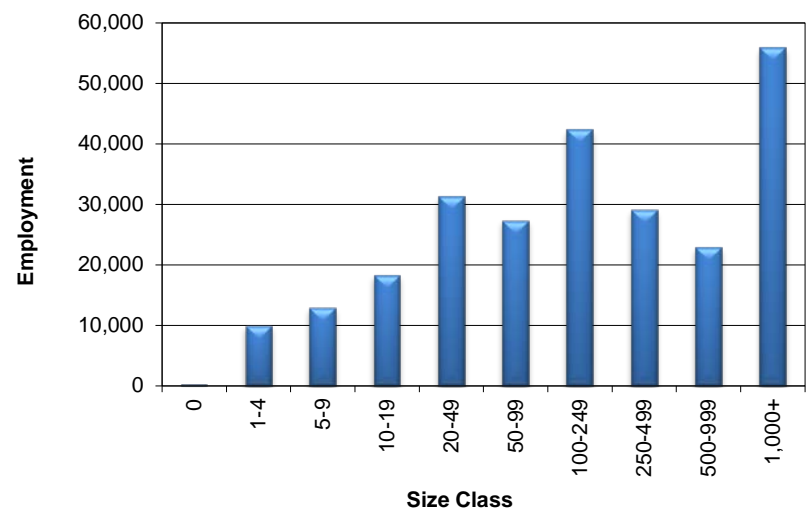
## Coastal Bend WDA Average Weekly Wage

	Coastal Bend	Texas
4th Quarter 2014	\$911.77	\$1,071.29
3rd Quarter 2014	\$845.95	\$987.96
4th Quarter 2013	\$860.03	\$1,026.57
Quarter Change	\$65.82	\$83.33
OTY Change	\$51.74	\$44.72

## NAICS Covered Employment Quarterly Data 4th Quarter 2014

SUPER SECTOR	Employment	Change	
		Quarter	Year
Construction	20,303	225	687
Education & Health Services	37,712	463	-355
Federal	7,741	-60	-262
Financial Activities	10,694	102	608
Information	2,336	-35	-60
Leisure & Hospitality	29,978	-1,360	979
Local	29,365	1,940	-83
Manufacturing	11,158	-703	-391
Natural Resources & Mining	20,174	260	1,317
Nonclassified	38	3	-4
Other Services	7,388	-148	122
Professional & Business Services	18,447	550	877
State	9,728	1,212	273
Trade, Transportation, & Utilities	45,267	696	1,457
<b>TOTAL</b>	<b>250,329</b>	<b>3,145</b>	<b>5,165</b>

## Size Class Employment Composition 4th Quarter 2014



\*Counties in WDA: Aransas, Bee, Brooks, Duval, Jim Wells, Kenedy, Kleberg, Live Oak, McMullen, Nueces, Refugio, & San Patricio