

# Coastal Bend Workforce Area

(Not Seasonally Adjusted Unemployment Rates by WDA, MSA, & County)

Area	Area Type	Latest Monthly Data July 2015						Previous Monthly Data June 2015				Year Ago July 2014			
		Labor Force	Employment	Unemployment	Rate	M+-	Y+-	Labor Force	Employment	Unemployment	Rate	Labor Force	Employment	Unemployment	Rate
United States	Nation	157,106,000	148,840,000	8,266,000	5.3	0.0	-0.9	157,037,000	148,739,000	8,299,000	5.3	156,048,000	146,401,000	9,648,000	6.2
Texas	State	13,035,149	12,493,880	541,269	4.2	0.0	-0.8	13,086,714	12,541,984	544,730	4.2	13,094,053	12,445,306	648,747	5.0
Corpus Christi	MSA	209,815	199,040	10,775	5.1	0.1	-0.5	211,039	200,541	10,498	5.0	212,691	200,715	11,976	5.6
Coastal Bend	WDA	276,790	261,514	15,276	5.5	0.2	-0.2	278,693	263,822	14,871	5.3	279,104	263,257	15,847	5.7
Aransas	County	10,061	9,558	503	5.0	0.2	-0.9	10,132	9,650	482	4.8	10,248	9,643	605	5.9
Bee	County	10,712	9,997	715	6.7	0.4	0.3	10,970	10,284	686	6.3	11,040	10,329	711	6.4
Brooks	County	2,719	2,437	282	10.4	0.6	1.0	2,726	2,458	268	9.8	2,669	2,418	251	9.4
Duval	County	5,780	5,330	450	7.8	0.3	1.9	5,865	5,424	441	7.5	5,637	5,304	333	5.9
Jim Wells	County	20,881	19,218	1,663	8.0	0.3	2.2	21,041	19,423	1,618	7.7	20,321	19,136	1,185	5.8
Kenedy	County	363	354	9	2.5	-0.5	0.2	370	359	11	3.0	349	341	8	2.3
Kleberg	County	14,918	13,987	931	6.2	0.2	0.0	15,000	14,093	907	6.0	15,272	14,322	950	6.2
Live Oak	County	6,626	6,378	248	3.7	0.0	-0.1	6,650	6,406	244	3.7	6,328	6,085	243	3.8
McMullen	County	1,293	1,275	18	1.4	0.1	-0.3	1,316	1,299	17	1.3	1,120	1,101	19	1.7
Nueces	County	168,928	160,606	8,322	4.9	0.1	-0.5	169,871	161,765	8,106	4.8	171,189	161,861	9,328	5.4
Refugio	County	3,683	3,498	185	5.0	0.1	0.3	3,716	3,535	181	4.9	3,677	3,506	171	4.7
San Patricio	County	30,826	28,876	1,950	6.3	0.1	-0.2	31,036	29,126	1,910	6.2	31,254	29,211	2,043	6.5

(M+-) Change in unemployment rate from last month (Increase) (Decrease)

(Y+-) Change in unemployment rate from last year (Increase) (Decrease)

- Earnings for all occupations Coastal Bend, expressed as hourly rate (TWC):

Coastal Bend	All Occupations-	Average \$18.35/hr.	Entry level \$8.58/hr.	Experienced workers \$23.24/hr.	Top 10% \$33.56/hr.
Texas	All Occupations-	Average \$20.97/hr.	Entry level \$8.88/hr.	Experienced workers \$ 27.02/hr.	Top 10% \$39.64/hr.

- Educational Attainment for population 25 years of age and older - Corpus Christi (Census American Fact Finder/American Community Survey):

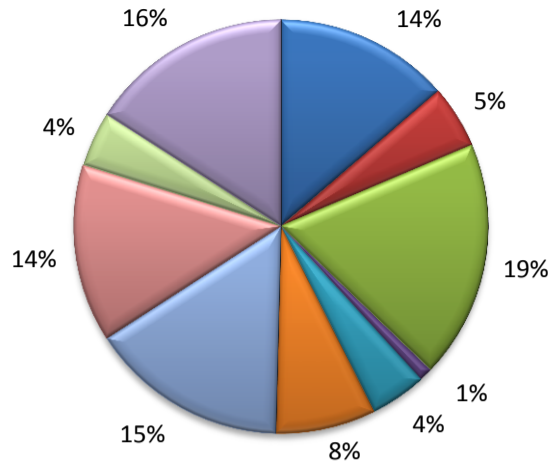
Less than 9 <sup>th</sup> grade	8.7%	12 <sup>th</sup> grade & GED	27.7%	Associates degree	7.0%	Graduate or Professional degrees	8.4%
9 <sup>th</sup> thru 11 <sup>th</sup> grade	9.3%	Some College	25.1%	Bachelors degree	13.8%		

- Median earnings Corpus Christi by education for persons 25 years of age & up (Census AFF/ACS): **\$27,211** (\$36,380 male/ \$22,328 female)

Less than High School	\$15,437	Some College or Associates	\$28,739	Graduate or Professional	\$56,681
High School & GED	\$26,818	Bachelor's	\$44,078		

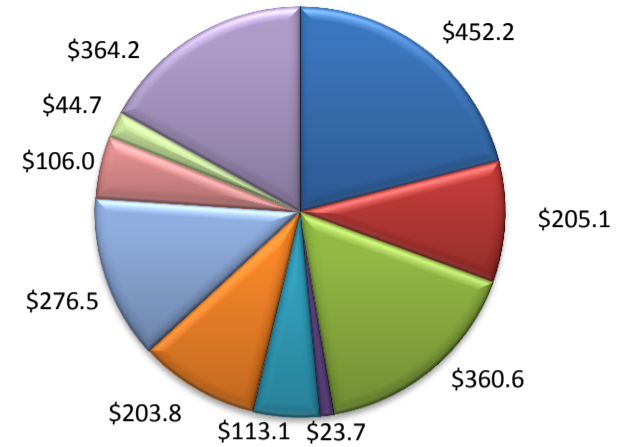
(Aransas, Nueces, San Patricio)

Industry Composition



- Mining, Logging, and Construction
- Manufacturing
- Trade, Transportation, and Utilities
- Information
- Financial Activities
- Professional and Business Services
- Education and Health Services
- Leisure and Hospitality
- Other Services
- Government

Wages by Industry (in millions)  
1st Quarter 2015



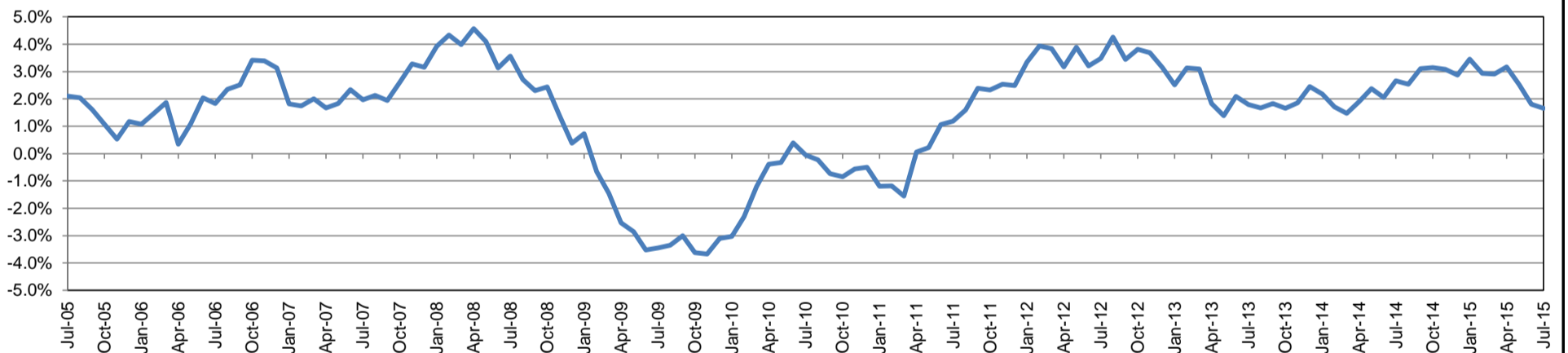
Employment by Industry

	Jul-15	Jun-15	Jul-14	Monthly Change		Annual Change	
				Actual	%	Actual	%
Total Nonfarm	196,200	198,000	193,000	-1,800	-0.9%	3,200	1.7%
Mining, Logging, and Construction	26,800	26,600	25,700	200	0.8%	1,100	4.3%
Manufacturing	9,700	9,600	10,000	100	1.0%	-300	-3.0%
Trade, Transportation, and Utilities	36,400	36,800	35,700	-400	-1.1%	700	2.0%
Information	2,100	2,100	2,100	0	0.0%	0	0.0%
Financial Activities	8,600	8,600	8,500	0	0.0%	100	1.2%
Professional and Business Services	15,300	15,300	15,900	0	0.0%	-600	-3.8%
Education and Health Services	30,400	30,400	29,400	0	0.0%	1,000	3.4%
Leisure and Hospitality	27,200	27,300	26,100	-100	-0.4%	1,100	4.2%
Other Services	8,500	8,500	8,300	0	0.0%	200	2.4%
Government	31,200	32,800	31,300	-1,600	-4.9%	-100	-0.3%

Industry Size Class

Size Class	Employees per firm	Number of Firms	March 2015		
			Employment in Size Class	% Total Employment	
9	1000+	19	42,864	22.6%	
8	500-999	20	14,579	7.7%	
7	250-499	58	19,768	10.4%	
6	100-249	215	33,098	17.5%	
5	50-99	310	21,606	11.4%	
4	20-49	829	25,390	13.4%	
3	10-19	1,096	14,935	7.9%	
2	5-9	1,525	10,041	5.3%	
1	1-4	3,557	7,320	3.9%	
0	0	650	0	0.0%	
Total			8,279	189,601	100.0%

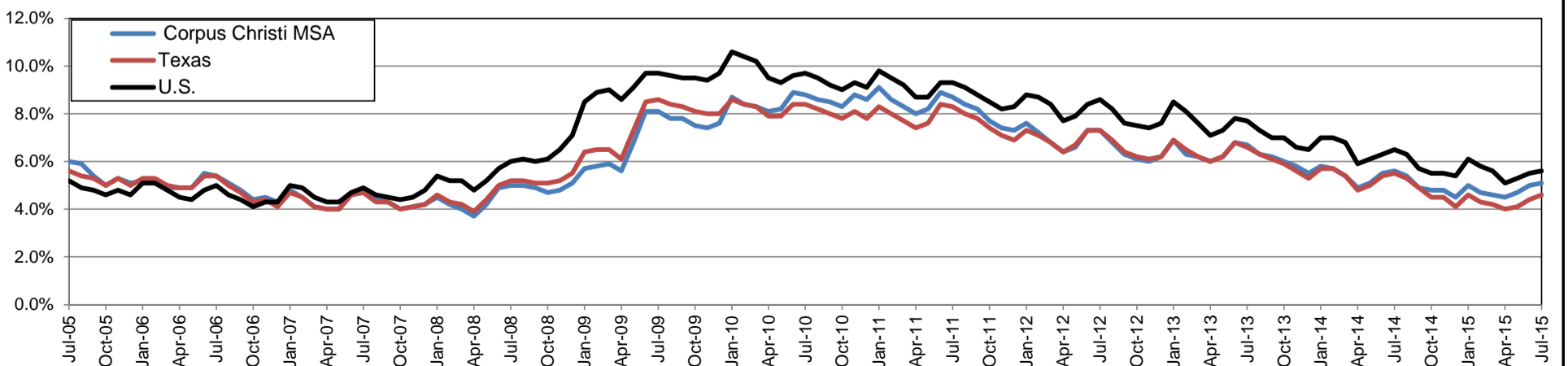
Annual Growth Rate for Total Nonagricultural Employment



Unemployment Information (all estimates in thousands)

	Corpus Christi MSA				Texas (Actual)				United States (Actual)			
	C.L.F.	Emp.	Unemp.	Rate	C.L.F.	Emp.	Unemp.	Rate	C.L.F.	Emp.	Unemp.	Rate
Jul-15	209.8	199.0	10.8	5.1	13,081.5	12,484.1	597.4	4.6	158,527.0	149,722.0	8,805.0	5.6
Jun-15	211.0	200.5	10.5	5.0	13,097.7	12,517.7	580.0	4.4	158,283.0	149,645.0	8,638.0	5.5
Jul-14	212.7	200.7	12.0	5.6	13,178.7	12,450.4	728.3	5.5	157,573.0	147,265.0	10,307.0	6.5

Historical Unemployment Rates

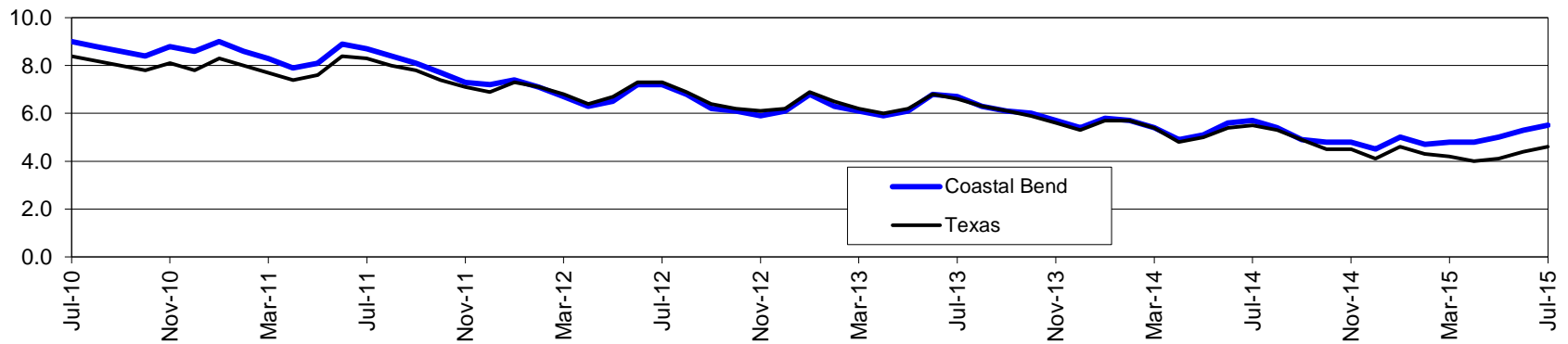


# Coastal Bend Workforce Development Area\*

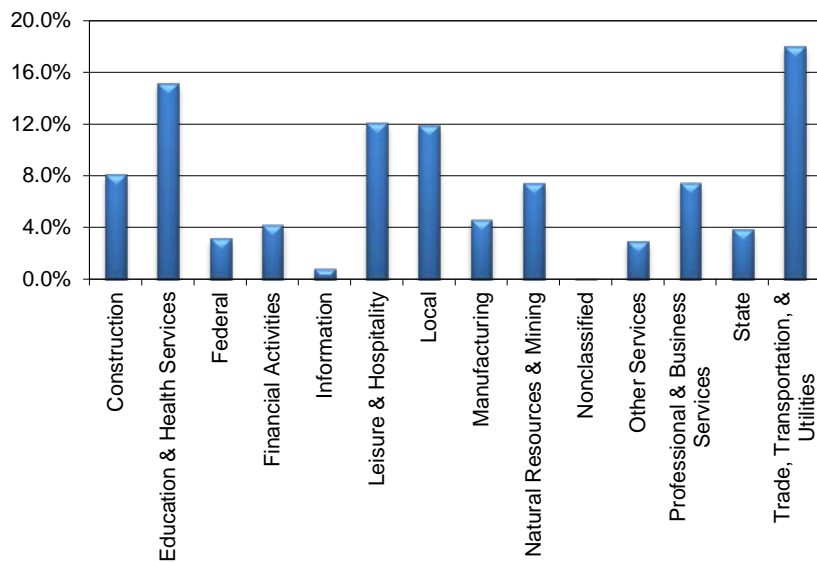
July 2015

Coastal Bend WDA					Texas				
	CLF	Employed	Unemployed	Rate		CLF	Employed	Unemployed	Rate
Jul-15	276,790	261,514	15,276	5.5	Jul-15	13,081,485	12,484,091	597,394	4.6
Jun-15	278,693	263,822	14,871	5.3	Jun-15	13,097,691	12,517,678	580,013	4.4
Jul-14	279,104	263,257	15,847	5.7	Jul-14	13,178,720	12,450,375	728,345	5.5

## Historical Unemployment Rates



## Coastal Bend WDA Industry Composition 1st Quarter 2015



## Total WDA Claims

### Continued Claims for the Week of the 12th

	Jul-15	Jun-15	Jul-14	OTY
Continued	4,682	4,858	2,798	1,884

### Texas Unemployment Insurance Claims

#### Continued Claims for the Week of the 12th

	Jul-15	Jun-15	Jul-14	OTY
Continued	147,799	148,789	129,561	18,238

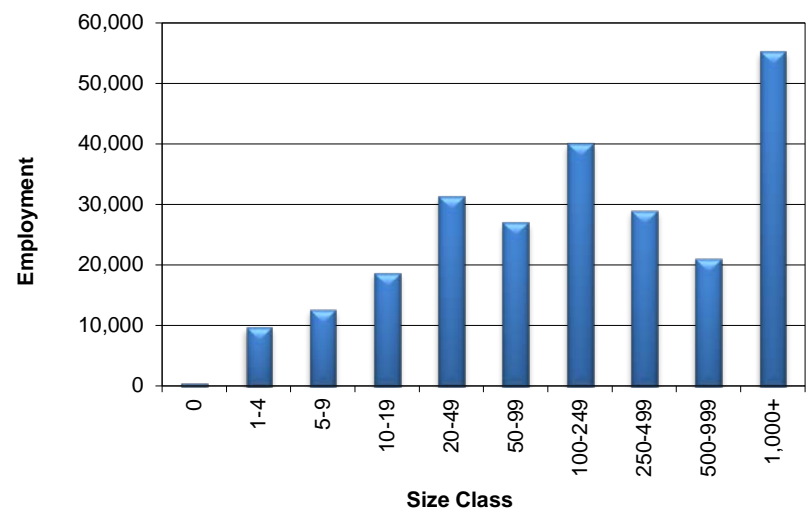
## Coastal Bend WDA Average Weekly Wage

	Coastal Bend	Texas
1st Quarter 2015	\$867.84	\$1,089.18
4th Quarter 2014	\$913.85	\$1,070.14
1st Quarter 2014	\$855.01	\$1,062.09
Quarter Change	-\$46.01	\$19.04
OTY Change	\$12.83	\$27.09

## NAICS Covered Employment Quarterly Data 1st Quarter 2015

SUPER SECTOR	Employment	Change	
		Quarter	Year
Construction	19,828	-880	62
Education & Health Services	37,256	-424	183
Federal	7,800	59	32
Financial Activities	10,410	-283	300
Information	2,128	-205	-223
Leisure & Hospitality	29,859	-126	840
Local	29,242	-121	-125
Manufacturing	11,452	-151	-102
Natural Resources & Mining	18,161	-1,501	-389
Nonclassified	53	3	30
Other Services	7,143	-265	-189
Professional & Business Services	18,401	-30	1,056
State	9,405	-323	2
Trade, Transportation, & Utilities	44,357	-939	640
<b>TOTAL</b>	<b>245,495</b>	<b>-5,186</b>	<b>2,117</b>

## Size Class Employment Composition 1st Quarter 2015



\*Counties in WDA: Aransas, Bee, Brooks, Duval, Jim Wells, Kenedy, Kleberg, Live Oak, McMullen, Nueces, Refugio, & San Patricio