

Coastal Bend Workforce Area

(Not Seasonally Adjusted Unemployment Rates by WDA, MSA, & County)

Area	Area Type	Latest Monthly Data January 2016						Previous Monthly Data December 2015				Year Ago January 2015			
		Labor Force	Employment	Unemployment	Rate	M+-	Y+-	Labor Force	Employment	Unemployment	Rate	Labor Force	Employment	Unemployment	Rate
United States	Nation	158,335,000	150,544,000	7,791,000	4.9	-0.1	-0.8	157,833,000	149,929,000	7,904,000	5.0	157,025,000	148,104,000	8,920,000	5.7
Texas	State	13,168,240	12,574,006	594,234	4.5	-0.1	0.1	13,142,426	12,531,875	610,551	4.6	13,018,511	12,443,516	574,995	4.4
Corpus Christi	MSA	210,204	198,615	11,589	5.5	0.2	0.3	208,849	197,800	11,049	5.3	206,795	196,114	10,681	5.2
Coastal Bend	WDA	270,392	254,280	16,112	6.0	0.3	0.8	269,517	254,120	15,397	5.7	270,584	256,630	13,954	5.2
Aransas	County	10,146	9,584	562	5.5	0.2	0.0	10,117	9,583	534	5.3	10,061	9,505	556	5.5
Bee	County	10,106	9,420	686	6.8	0.5	1.2	10,190	9,547	643	6.3	10,349	9,769	580	5.6
Brooks	County	2,528	2,249	279	11.0	0.5	3.9	2,529	2,263	266	10.5	2,648	2,459	189	7.1
Duval	County	5,105	4,611	494	9.7	0.3	4.4	5,053	4,578	475	9.4	5,556	5,250	306	5.5
Jim Wells	County	18,764	17,093	1,671	8.9	0.0	3.8	18,933	17,254	1,679	8.9	19,929	18,914	1,015	5.1
Kenedy	County	245	237	8	3.3	0.5	0.2	253	246	7	2.8	325	315	10	3.1
Kleberg	County	13,727	12,811	916	6.7	0.6	1.3	13,994	13,142	852	6.1	14,614	13,827	787	5.4
Live Oak	County	5,592	5,329	263	4.7	0.4	1.1	5,502	5,263	239	4.3	5,946	5,729	217	3.6
McMullen	County	908	892	16	1.8	0.0	-0.5	943	926	17	1.8	995	972	23	2.3
Nueces	County	169,196	160,302	8,894	5.3	0.3	0.4	168,033	159,571	8,462	5.0	166,298	158,170	8,128	4.9
Refugio	County	3,213	3,023	190	5.9	0.7	1.6	3,271	3,101	170	5.2	3,427	3,281	146	4.3
San Patricio	County	30,862	28,729	2,133	6.9	0.2	0.3	30,699	28,646	2,053	6.7	30,436	28,439	1,997	6.6

(M+-) Change in unemployment rate from last month (Increase) (Decrease)

(Y+-) Change in unemployment rate from last year (Increase) (Decrease)

- Earnings for all occupations Coastal Bend, expressed as hourly rate (TWC):

Coastal Bend	All Occupations-	Average \$18.35/hr.	Entry level \$8.58/hr.	Experienced workers \$23.24/hr.	Top 10% \$33.56/hr.
Texas	All Occupations-	Average \$20.97/hr.	Entry level \$8.88/hr.	Experienced workers \$ 27.02/hr.	Top 10% \$39.64/hr.

- Educational Attainment for population 25 years of age and older - Corpus Christi (Census American Fact Finder/American Community Survey):

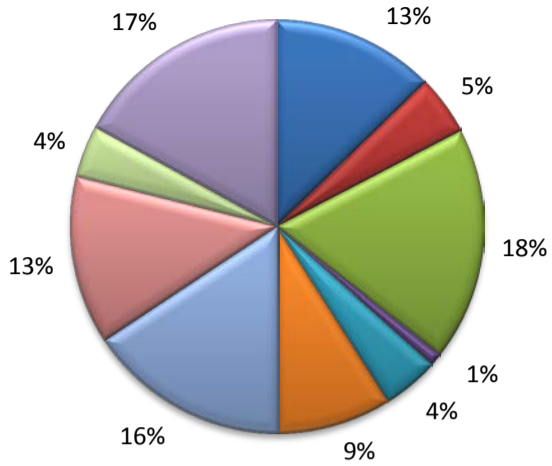
Less than 9th grade	8.7%	12th grade & GED	27.7%	Associates degree	7.0%	Graduate or Professional degrees	8.4%
9th thru 11th grade	9.3%	Some College	25.1%	Bachelors degree	13.8%		

- Median earnings Corpus Christi by education for persons 25 years of age & up (Census AFF/ACS): **\$27,211** (\$36,380 male/ \$22,328 female)

Less than High School	\$15,437	Some College or Associates	\$28,739	Graduate or Professional	\$56,681
High School & GED	\$26,818	Bachelor's	\$44,078		

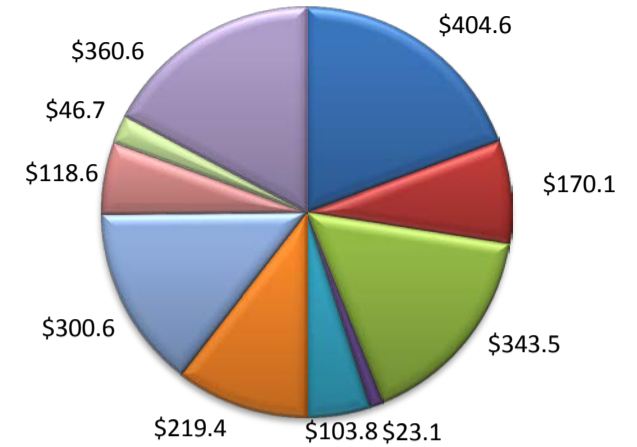
(Aransas, Nueces, San Patricio)

Industry Composition



- Mining, Logging, and Construction
- Manufacturing
- Trade, Transportation, and Utilities
- Information
- Financial Activities
- Professional and Business Services
- Education and Health Services
- Leisure and Hospitality
- Other Services
- Government

Wages by Industry (in millions)
3rd Quarter 2015



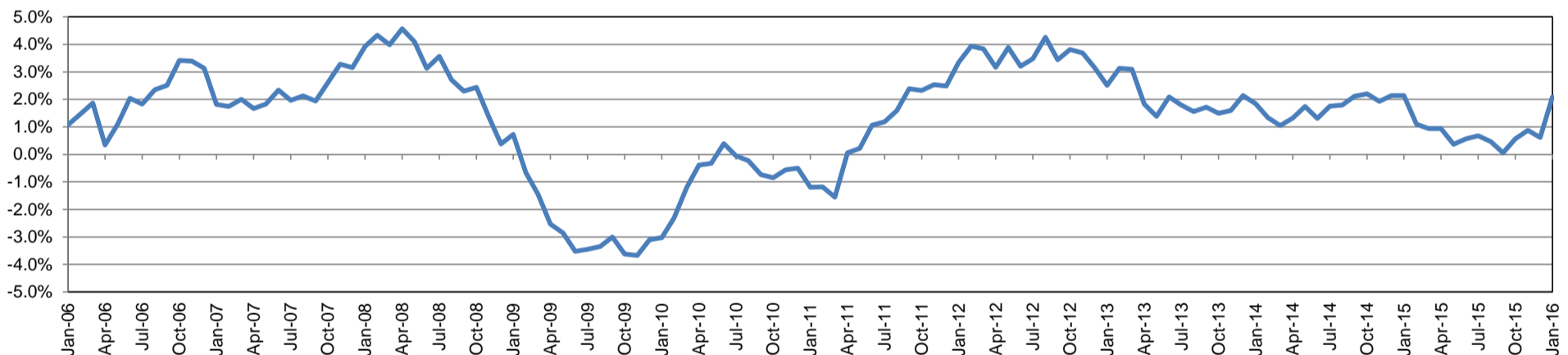
Employment by Industry

	Jan-16	Dec-15	Jan-15	Monthly Change		Annual Change	
				Actual	%	Actual	%
Total Nonfarm	195,500	196,700	191,500	-1,200	-0.6%	4,000	2.1%
Mining, Logging, and Construction	24,800	24,100	25,000	700	2.9%	-200	-0.8%
Manufacturing	9,100	9,300	9,400	-200	-2.2%	-300	-3.2%
Trade, Transportation, and Utilities	35,700	36,200	35,300	-500	-1.4%	400	1.1%
Information	2,000	2,000	1,900	0	0.0%	100	5.3%
Financial Activities	8,600	8,600	8,400	0	0.0%	200	2.4%
Professional and Business Services	17,400	17,200	16,800	200	1.2%	600	3.6%
Education and Health Services	30,900	31,000	29,500	-100	-0.3%	1,400	4.8%
Leisure and Hospitality	25,700	26,200	23,900	-500	-1.9%	1,800	7.5%
Other Services	8,000	8,100	8,000	-100	-1.2%	0	0.0%
Government	33,300	34,000	33,300	-700	-2.1%	0	0.0%

Industry Size Class

Size Class	Employees per firm	Number of Firms	September 2015		
			Employment in Size Class	% Total Employment	
9	1000+	18	41,193	21.9%	
8	500-999	22	15,469	8.2%	
7	250-499	49	16,399	8.7%	
6	100-249	228	35,361	18.8%	
5	50-99	313	21,609	11.5%	
4	20-49	860	26,114	13.9%	
3	10-19	1,081	14,749	7.8%	
2	5-9	1,515	10,074	5.3%	
1	1-4	3,569	7,401	3.9%	
0	0	640	0	0.0%	
Total			8,295	188,369	100.0%

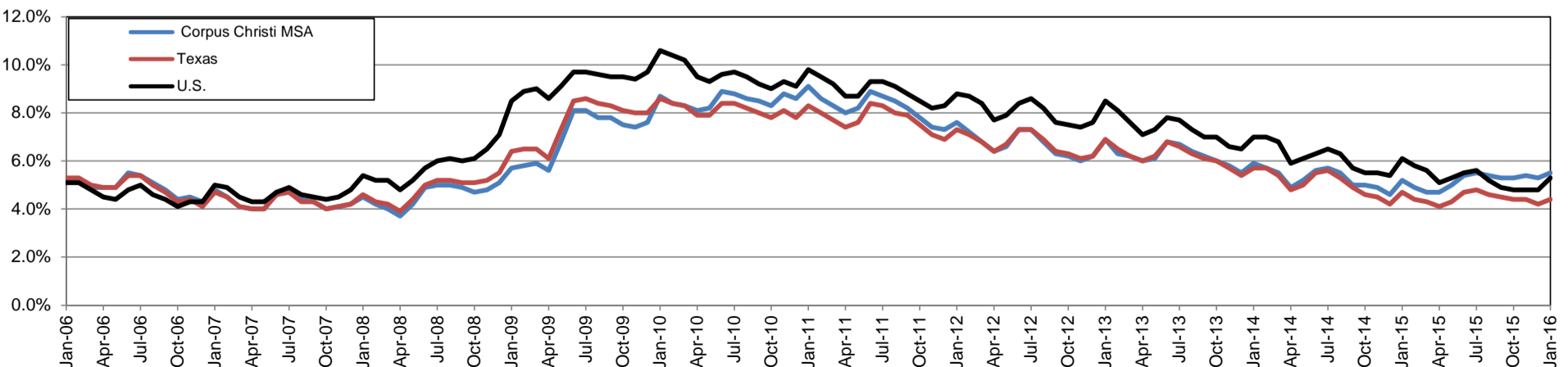
Annual Growth Rate for Total Nonagricultural Employment



Unemployment Information (all estimates in thousands)

	Corpus Christi MSA				Texas (Actual)				United States (Actual)			
	C.L.F.	Emp.	Unemp.	Rate	C.L.F.	Emp.	Unemp.	Rate	C.L.F.	Emp.	Unemp.	Rate
Jan-16	210.2	198.6	11.6	5.5	13,114.6	12,533.1	581.5	4.4	157,347.0	149,037.0	8,309.0	5.3
Dec-15	208.8	197.8	11.0	5.3	13,136.9	12,580.2	556.7	4.2	157,245.0	149,703.0	7,542.0	4.8
Jan-15	206.8	196.1	10.7	5.2	13,004.5	12,393.2	611.2	4.7	156,050.0	146,552.0	9,498.0	6.1

Historical Unemployment Rates

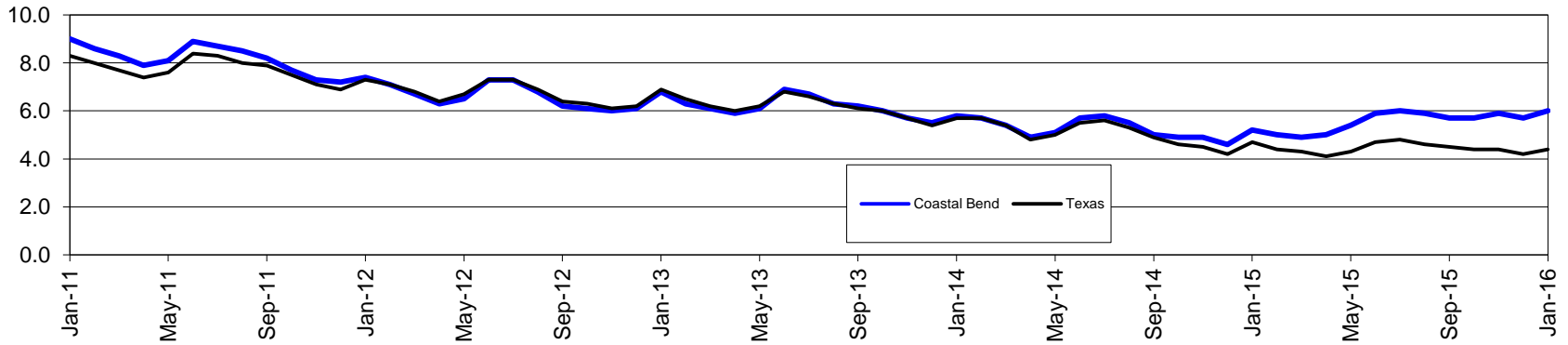


Coastal Bend Workforce Development Area*

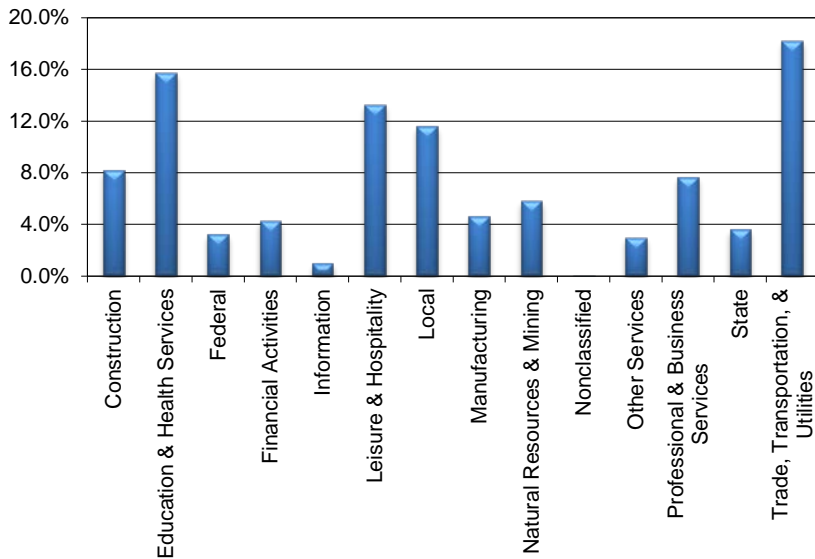
January 2016

Coastal Bend WDA					Texas				
	CLF	Employed	Unemployed	Rate		CLF	Employed	Unemployed	Rate
Jan-16	270,392	254,280	16,112	6.0	Jan-16	13,114,646	12,533,133	581,513	4.4
Dec-15	269,517	254,120	15,397	5.7	Dec-15	13,136,901	12,580,195	556,706	4.2
Jan-15	270,584	256,630	13,954	5.2	Jan-15	13,004,462	12,393,247	611,215	4.7

Historical Unemployment Rates



Coastal Bend WDA Industry Composition 3rd Quarter 2015



Total WDA Claims

Continued Claims for the Week of the 12th

	Jan-16	Dec-15	Jan-15	OTY
Continued	4,851	4,669	3,004	1,847

Texas Unemployment Insurance Claims

Continued Claims for the Week of the 12th

	Jan-16	Dec-15	Jan-15	OTY
Continued	142,880	138,530	113,005	29,875

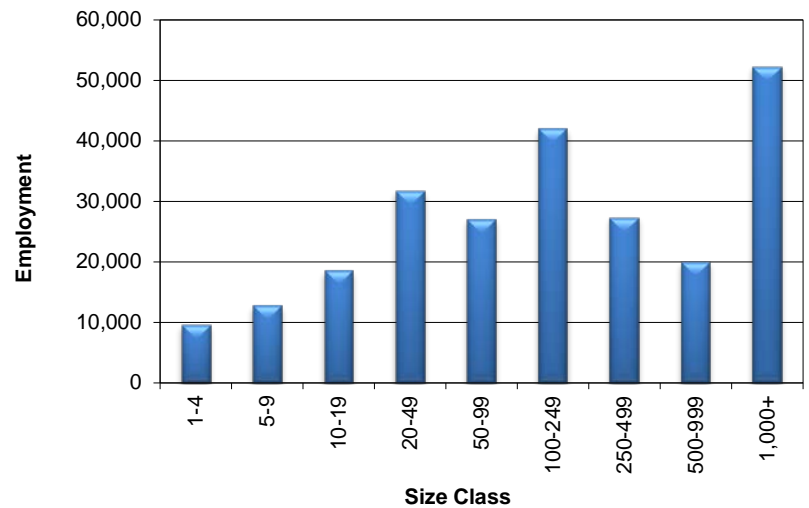
Coastal Bend WDA Average Weekly Wage

	Coastal Bend	Texas
3rd Quarter 2015	\$838.82	\$998.63
2nd Quarter 2015	\$821.94	\$988.42
3rd Quarter 2014	\$845.84	\$987.85
Quarter Change	\$16.88	\$10.21
OTY Change	-\$7.02	\$10.78

NAICS Covered Employment Quarterly Data 3rd Quarter 2015

SUPER SECTOR	Employment	Change	
		Quarter	Year
Construction	19,707	142	-371
Education & Health Services	37,877	196	593
Federal	7,778	-29	-23
Financial Activities	10,306	-22	-286
Information	2,288	-4	-83
Leisure & Hospitality	31,956	69	618
Local	27,850	-1,437	425
Manufacturing	11,034	-210	-827
Natural Resources & Mining	14,000	-846	-5,911
Nonclassified	74	10	39
Other Services	7,127	5	-409
Professional & Business Services	18,431	275	534
State	8,694	-798	178
Trade, Transportation, & Utilities	43,870	-263	-701
TOTAL	240,992	-2,912	-6,224

Size Class Employment Composition 3rd Quarter 2015



*Counties in WDA: Aransas, Bee, Brooks, Duval, Jim Wells, Kenedy, Kleberg, Live Oak, McMullen, Nueces, Refugio, & San Patricio