

# Coastal Bend Workforce Area

(Not Seasonally Adjusted Unemployment Rates by WDA, MSA, & County)

Area	Area Type	Latest Monthly Data February 2016						Previous Monthly Data January 2016				Year Ago February 2015			
		Labor Force	Employment	Unemployment	Rate	M+-	Y+-	Labor Force	Employment	Unemployment	Rate	Labor Force	Employment	Unemployment	Rate
United States	Nation	158,890,000	151,074,000	7,815,000	4.9	0.0	-0.6	158,335,000	150,544,000	7,791,000	4.9	156,878,000	148,231,000	8,646,000	5.5
Texas	State	13,215,777	12,640,807	574,970	4.4	-0.1	0.0	13,167,773	12,573,533	594,240	4.5	13,021,310	12,450,149	571,161	4.4
Corpus Christi	MSA	212,006	200,692	11,314	5.3	-0.2	0.4	210,170	198,584	11,586	5.5	206,790	196,644	10,146	4.9
Coastal Bend	WDA	273,137	257,269	15,868	5.8	-0.2	0.8	270,348	254,240	16,108	6.0	270,858	257,323	13,535	5.0
Aransas	County	10,263	9,719	544	5.3	-0.2	0.2	10,145	9,583	562	5.5	10,036	9,529	507	5.1
Bee	County	10,371	9,690	681	6.6	-0.2	1.3	10,104	9,419	685	6.8	10,447	9,896	551	5.3
Brooks	County	2,561	2,289	272	10.6	-0.5	2.9	2,528	2,248	280	11.1	2,691	2,484	207	7.7
Duval	County	5,146	4,614	532	10.3	0.6	4.1	5,104	4,610	494	9.7	5,499	5,158	341	6.2
Jim Wells	County	18,805	17,133	1,672	8.9	0.0	3.3	18,761	17,091	1,670	8.9	19,827	18,726	1,101	5.6
Kenedy	County	263	254	9	3.4	0.1	1.0	245	237	8	3.3	329	321	8	2.4
Kleberg	County	14,170	13,256	914	6.5	-0.2	1.3	13,725	12,809	916	6.7	14,919	14,145	774	5.2
Live Oak	County	5,658	5,387	271	4.8	0.1	1.1	5,591	5,328	263	4.7	5,962	5,743	219	3.7
McMullen	County	915	900	15	1.6	-0.2	-0.4	908	892	16	1.8	983	963	20	2.0
Nueces	County	170,565	161,859	8,706	5.1	-0.2	0.5	169,168	160,276	8,892	5.3	166,248	158,531	7,717	4.6
Refugio	County	3,242	3,054	188	5.8	-0.1	0.9	3,212	3,022	190	5.9	3,411	3,243	168	4.9
San Patricio	County	31,178	29,114	2,064	6.6	-0.3	0.3	30,857	28,725	2,132	6.9	30,506	28,584	1,922	6.3

(M+-) Change in unemployment rate from last month (Increase) (Decrease)

(Y+-) Change in unemployment rate from last year (Increase) (Decrease)

- Earnings for all occupations Coastal Bend, expressed as hourly rate (TWC):

<b>Coastal Bend</b>	<b>All Occupations-</b>	<b>Average \$18.35/hr.</b>	<b>Entry level \$8.58/hr.</b>	<b>Experienced workers \$23.24/hr.</b>	<b>Top 10% \$33.56/hr.</b>
<b>Texas</b>	<b>All Occupations-</b>	<b>Average \$20.97/hr.</b>	<b>Entry level \$8.88/hr.</b>	<b>Experienced workers \$ 27.02/hr.</b>	<b>Top 10% \$39.64/hr.</b>

- Educational Attainment for population 25 years of age and older - Corpus Christi (Census American Fact Finder/American Community Survey):

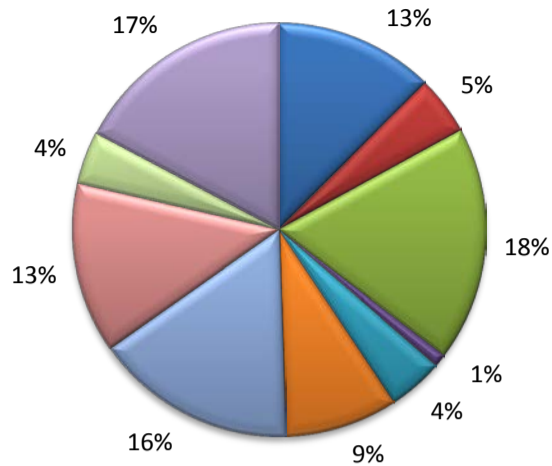
<b>Less than 9<sup>th</sup> grade</b>	<b>8.7%</b>	<b>12<sup>th</sup> grade &amp; GED</b>	<b>27.7%</b>	<b>Associates degree</b>	<b>7.0%</b>	<b>Graduate or Professional degrees</b>	<b>8.4%</b>
<b>9<sup>th</sup> thru 11<sup>th</sup> grade</b>	<b>9.3%</b>	<b>Some College</b>	<b>25.1%</b>	<b>Bachelors degree</b>	<b>13.8%</b>		

- Median earnings Corpus Christi by education for persons 25 years of age & up (Census AFF/ACS): **\$27,211** (\$36,380 male/ \$22,328 female)

<b>Less than High School</b>	<b>\$15,437</b>	<b>Some College or Associates</b>	<b>\$28,739</b>	<b>Graduate or Professional</b>	<b>\$56,681</b>
<b>High School &amp; GED</b>	<b>\$26,818</b>	<b>Bachelor's</b>	<b>\$44,078</b>		

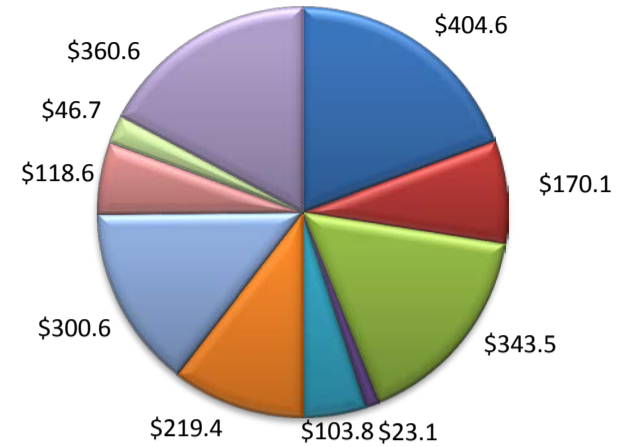
(Aransas, Nueces, San Patricio)

Industry Composition



- Mining, Logging, and Construction
- Manufacturing
- Trade, Transportation, and Utilities
- Information
- Financial Activities
- Professional and Business Services
- Education and Health Services
- Leisure and Hospitality
- Other Services
- Government

Wages by Industry (in millions)  
3rd Quarter 2015



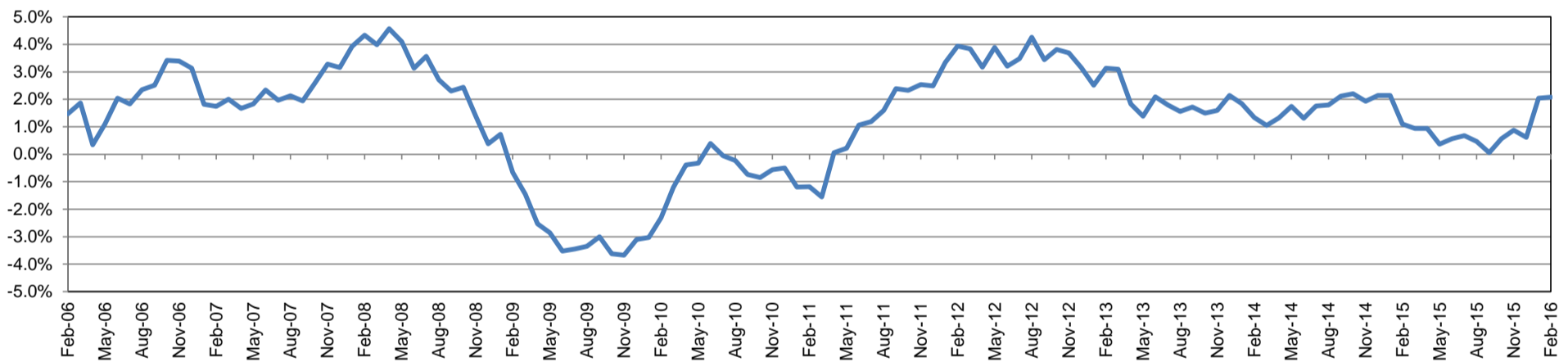
Employment by Industry

	Feb-16	Jan-16	Feb-15	Monthly Change		Annual Change	
				Actual	%	Actual	%
Total Nonfarm	196,600	195,400	192,600	1,200	0.6%	4,000	2.1%
Mining, Logging, and Construction	24,400	24,700	24,700	-300	-1.2%	-300	-1.2%
Manufacturing	9,100	9,100	9,400	0	0.0%	-300	-3.2%
Trade, Transportation, and Utilities	36,000	35,700	35,400	300	0.8%	600	1.7%
Information	2,000	2,000	1,900	0	0.0%	100	5.3%
Financial Activities	8,500	8,600	8,400	-100	-1.2%	100	1.2%
Professional and Business Services	17,300	17,400	16,900	-100	-0.6%	400	2.4%
Education and Health Services	31,000	30,800	29,500	200	0.7%	1,500	5.1%
Leisure and Hospitality	26,200	25,700	24,700	500	2.0%	1,500	6.1%
Other Services	8,100	8,000	8,000	100	1.3%	100	1.3%
Government	34,000	33,400	33,700	600	1.8%	300	0.9%

Industry Size Class

Size Class	Employees per firm	Number of Firms	September 2015		
			Employment in Size Class	% Total Employment	
9	1000+	18	41,193	21.9%	
8	500-999	22	15,469	8.2%	
7	250-499	49	16,399	8.7%	
6	100-249	228	35,361	18.8%	
5	50-99	313	21,609	11.5%	
4	20-49	860	26,114	13.9%	
3	10-19	1,081	14,749	7.8%	
2	5-9	1,515	10,074	5.3%	
1	1-4	3,569	7,401	3.9%	
0	0	640	0	0.0%	
Total			8,295	188,369	100.0%

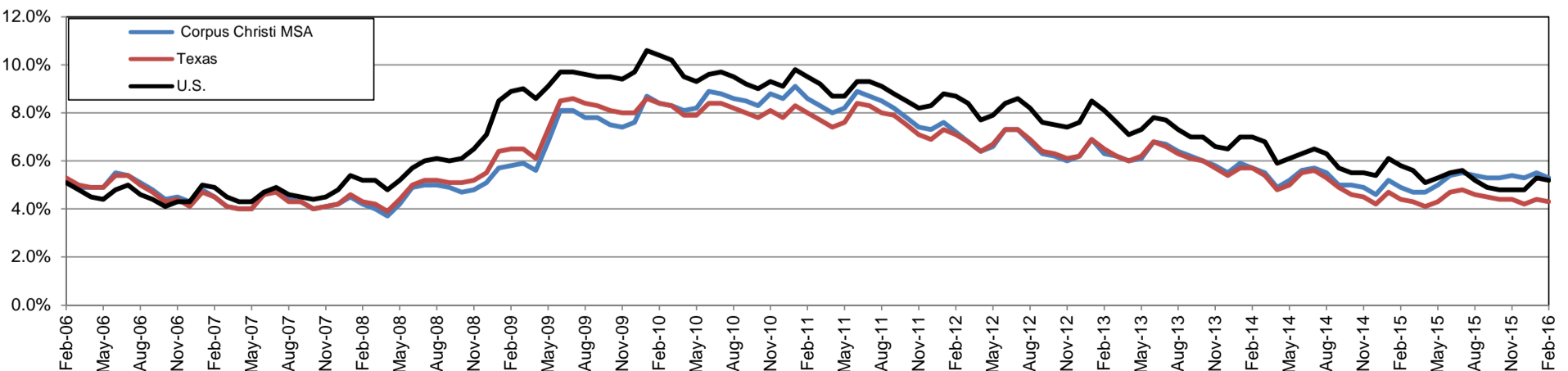
Annual Growth Rate for Total Nonagricultural Employment



Unemployment Information (all estimates in thousands)

	Corpus Christi MSA				Texas (Actual)				United States (Actual)			
	C.L.F.	Emp.	Unemp.	Rate	C.L.F.	Emp.	Unemp.	Rate	C.L.F.	Emp.	Unemp.	Rate
Feb-16	212.0	200.7	11.3	5.3	13,221.7	12,654.9	566.8	4.3	158,279.0	150,060.0	8,219.0	5.2
Jan-16	210.2	198.6	11.6	5.5	13,113.5	12,531.9	581.5	4.4	157,347.0	149,037.0	8,309.0	5.3
Feb-15	206.8	196.6	10.1	4.9	13,001.4	12,423.2	578.2	4.4	156,213.0	147,118.0	9,095.0	5.8

Historical Unemployment Rates

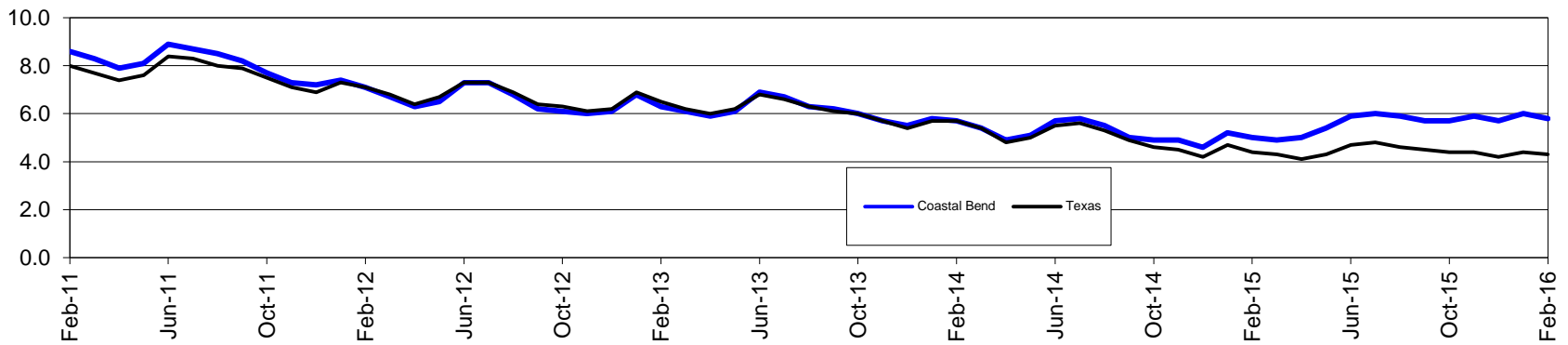


# Coastal Bend Workforce Development Area\*

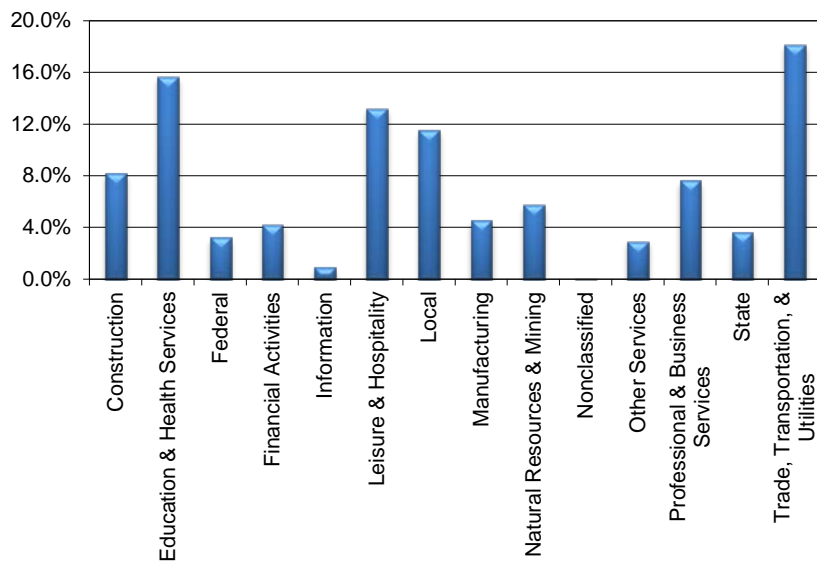
February 2016

Coastal Bend WDA					Texas				
	CLF	Employed	Unemployed	Rate		CLF	Employed	Unemployed	Rate
Feb-16	273,137	257,269	15,868	5.8	Feb-16	13,221,720	12,654,923	566,797	4.3
Jan-16	270,348	254,240	16,108	6.0	Jan-16	13,113,461	12,531,940	581,521	4.4
Feb-15	270,858	257,323	13,535	5.0	Feb-15	13,001,418	12,423,206	578,212	4.4

## Historical Unemployment Rates



## Coastal Bend WDA Industry Composition 3rd Quarter 2015



## Total WDA Claims

### Continued Claims for the Week of the 12th

	Feb-16	Jan-16	Feb-15	OTY
Continued	4,947	4,855	3,395	1,552

### Texas Unemployment Insurance Claims

#### Continued Claims for the Week of the 12th

	Feb-16	Jan-16	Feb-15	OTY
Continued	144,014	143,155	120,172	23,842

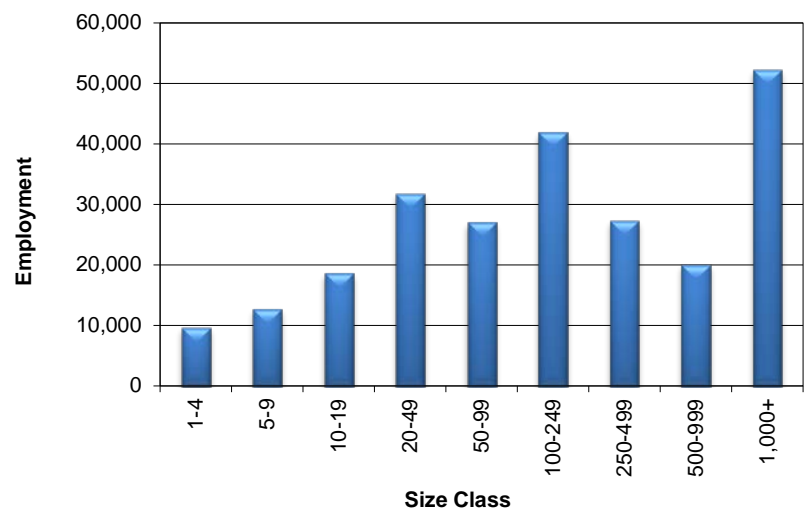
## Coastal Bend WDA Average Weekly Wage

	Coastal Bend	Texas
3rd Quarter 2015	\$838.82	\$998.63
2nd Quarter 2015	\$821.94	\$988.42
3rd Quarter 2014	\$845.84	\$987.85
Quarter Change	\$16.88	\$10.21
OTY Change	-\$7.02	\$10.78

## NAICS Covered Employment Quarterly Data 3rd Quarter 2015

SUPER SECTOR	Employment	Change	
		Quarter	Year
Construction	19,707	142	-371
Education & Health Services	37,877	196	593
Federal	7,778	-29	-23
Financial Activities	10,306	-22	-286
Information	2,288	-4	-83
Leisure & Hospitality	31,956	69	618
Local	27,850	-1,437	425
Manufacturing	11,034	-210	-827
Natural Resources & Mining	14,000	-846	-5,911
Nonclassified	74	10	39
Other Services	7,127	5	-409
Professional & Business Services	18,431	275	534
State	8,694	-798	178
Trade, Transportation, & Utilities	43,870	-263	-701
<b>TOTAL</b>	<b>240,992</b>	<b>-2,912</b>	<b>-6,224</b>

## Size Class Employment Composition 3rd Quarter 2015



\*Counties in WDA: Aransas, Bee, Brooks, Duval, Jim Wells, Kenedy, Kleberg, Live Oak, McMullen, Nueces, Refugio, & San Patricio