

Coastal Bend Workforce Area

(Not Seasonally Adjusted Unemployment Rates by WDA, MSA, & County)

Area	Area Type	Latest Monthly Data December 2016						Previous Monthly Data November 2016				Year Ago December 2015			
		Labor Force	Employment	Unemployment	Rate	M+-	Y+-	Labor Force	Employment	Unemployment	Rate	Labor Force	Employment	Unemployment	Rate
United States	Nation	159,640,000	152,111,000	7,529,000	4.7	0.1	-0.3	159,456,000	152,048,000	7,409,000	4.6	157,957,000	150,030,000	7,927,000	5.0
Texas	State	13,434,978	12,810,651	624,327	4.6	0.0	0.0	13,404,386	12,789,358	615,028	4.6	13,142,426	12,531,875	610,551	4.6
Corpus Christi	MSA	213,180	200,263	12,917	6.1	0.5	0.8	212,318	200,519	11,799	5.6	208,860	197,811	11,049	5.3
Coastal Bend	WDA	270,628	253,088	17,540	6.5	0.5	0.8	269,804	253,650	16,154	6.0	269,531	254,134	15,397	5.7
Aransas	County	10,316	9,699	617	6.0	0.5	0.7	10,255	9,688	567	5.5	10,117	9,583	534	5.3
Bee	County	10,145	9,368	777	7.7	0.6	1.4	10,094	9,374	720	7.1	10,191	9,548	643	6.3
Brooks	County	2,342	2,096	246	10.5	0.7	0.0	2,325	2,096	229	9.8	2,529	2,263	266	10.5
Duval	County	4,648	4,146	502	10.8	0.4	1.4	4,693	4,206	487	10.4	5,053	4,578	475	9.4
Jim Wells	County	16,976	15,322	1,654	9.7	0.4	0.8	16,983	15,396	1,587	9.3	18,934	17,255	1,679	8.9
Kenedy	County	200	189	11	5.5	0.5	2.7	200	190	10	5.0	253	246	7	2.8
Kleberg	County	13,948	13,019	929	6.7	0.6	0.6	13,941	13,087	854	6.1	13,995	13,143	852	6.1
Live Oak	County	5,292	5,012	280	5.3	0.4	1.0	5,349	5,088	261	4.9	5,502	5,263	239	4.3
McMullen	County	878	861	17	1.9	0.4	0.1	871	858	13	1.5	943	926	17	1.8
Nueces	County	171,463	161,637	9,826	5.7	0.4	0.7	170,825	161,834	8,991	5.3	168,043	159,581	8,462	5.0
Refugio	County	3,019	2,812	207	6.9	0.5	1.7	3,030	2,836	194	6.4	3,271	3,101	170	5.2
San Patricio	County	31,401	28,927	2,474	7.9	0.7	1.2	31,238	28,997	2,241	7.2	30,700	28,647	2,053	6.7

(M+-) Change in unemployment rate from last month (Increase) (Decrease)

(Y+-) Change in unemployment rate from last year (Increase) (Decrease)

- Earnings for all occupations Coastal Bend, expressed as hourly rate (TWC):

Coastal Bend	All Occupations-	Average \$18.35/hr.	Entry level \$8.58/hr.	Experienced workers \$23.24/hr.	Top 10% \$33.56/hr.
Texas	All Occupations-	Average \$20.97/hr.	Entry level \$8.88/hr.	Experienced workers \$ 27.02/hr.	Top 10% \$39.64/hr.

- Educational Attainment for population 25 years of age and older - Corpus Christi (Census American Fact Finder/American Community Survey):

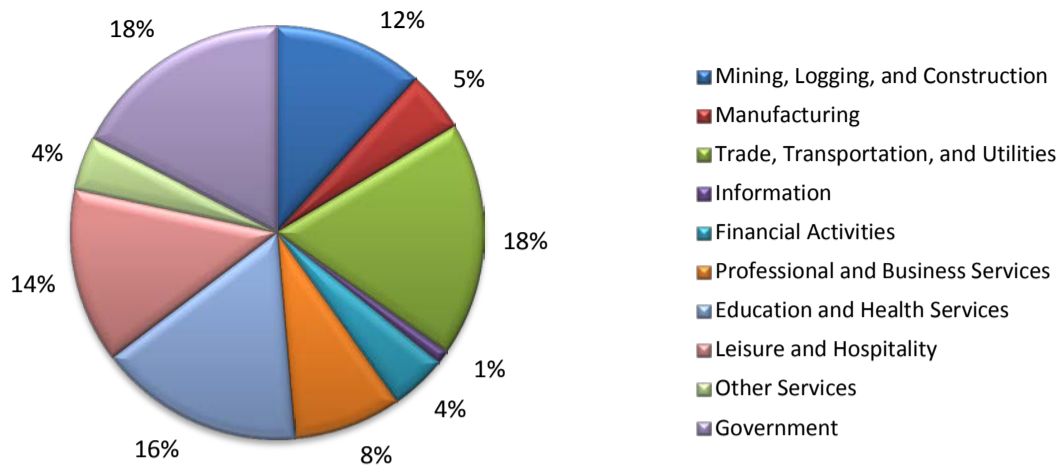
Less than 9th grade	8.7%	12th grade & GED	27.7%	Associates degree	7.0%	Graduate or Professional degrees	8.4%
9th thru 11th grade	9.3%	Some College	25.1%	Bachelors degree	13.8%		

- Median earnings Corpus Christi by education for persons 25 years of age & up (Census AFF/ACS): **\$27,211** (\$36,380 male/ \$22,328 female)

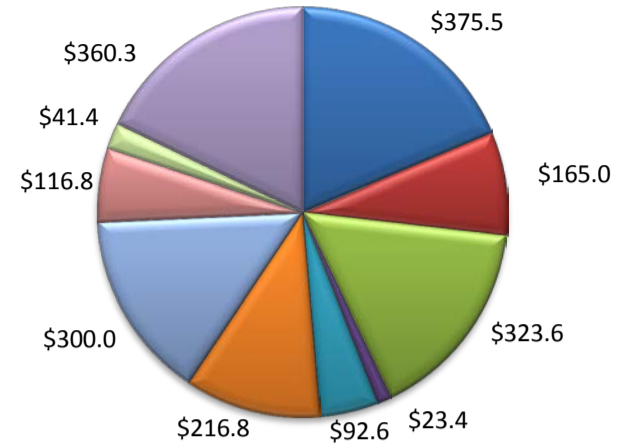
Less than High School	\$15,437	Some College or Associates	\$28,739	Graduate or Professional	\$56,681
High School & GED	\$26,818	Bachelor's	\$44,078		

(Aransas, Nueces, San Patricio)

Industry Composition



Wages by Industry (in millions)
2nd Quarter 2016



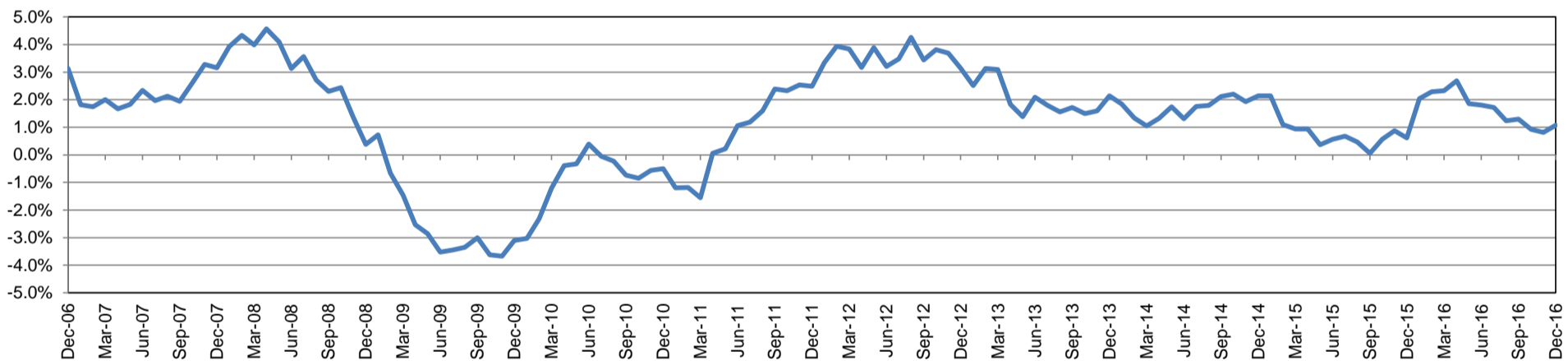
Employment by Industry

	Dec-16	Nov-16	Dec-15	Monthly Change		Annual Change	
				Actual	%	Actual	%
Total Nonfarm	198,800	198,400	196,700	400	0.2%	2,100	1.1%
Mining, Logging, and Construction	23,200	23,400	24,100	-200	-0.9%	-900	-3.7%
Manufacturing	9,400	9,300	9,300	100	1.1%	100	1.1%
Trade, Transportation, and Utilities	36,400	36,200	36,200	200	0.6%	200	0.6%
Information	2,100	2,100	2,000	0	0.0%	100	5.0%
Financial Activities	8,800	8,800	8,600	0	0.0%	200	2.3%
Professional and Business Services	16,800	16,400	17,200	400	2.4%	-400	-2.3%
Education and Health Services	31,900	31,900	31,000	0	0.0%	900	2.9%
Leisure and Hospitality	27,200	27,300	26,200	-100	-0.4%	1,000	3.8%
Other Services	8,300	8,300	8,100	0	0.0%	200	2.5%
Government	34,700	34,700	34,000	0	0.0%	700	2.1%

Industry Size Class June 2016

Size Class	Employees per firm	Number of Firms	Employment in Size Class	% Total Employment
9	1000+	19	43,079	23.3%
8	500-999	18	12,047	6.5%
7	250-499	58	19,182	10.4%
6	100-249	208	31,369	16.9%
5	50-99	319	22,054	11.9%
4	20-49	832	25,442	13.7%
3	10-19	1,091	14,852	8.0%
2	5-9	1,482	9,888	5.3%
1	1-4	3,456	7,156	3.9%
0	0	787	0	0.0%
Total		8,270	185,069	100.0%

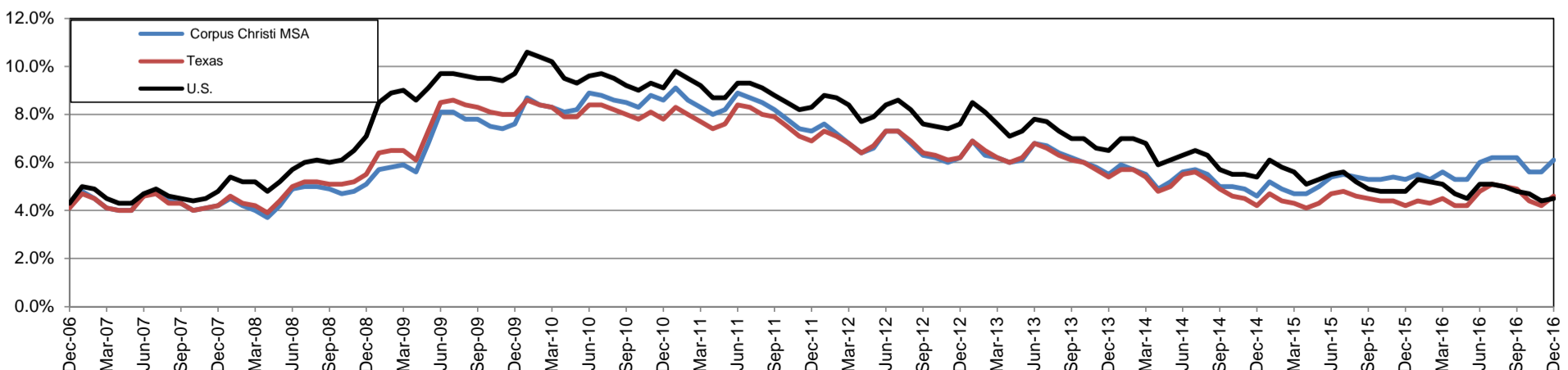
Annual Growth Rate for Total Nonagricultural Employment



Unemployment Information (all estimates in thousands)

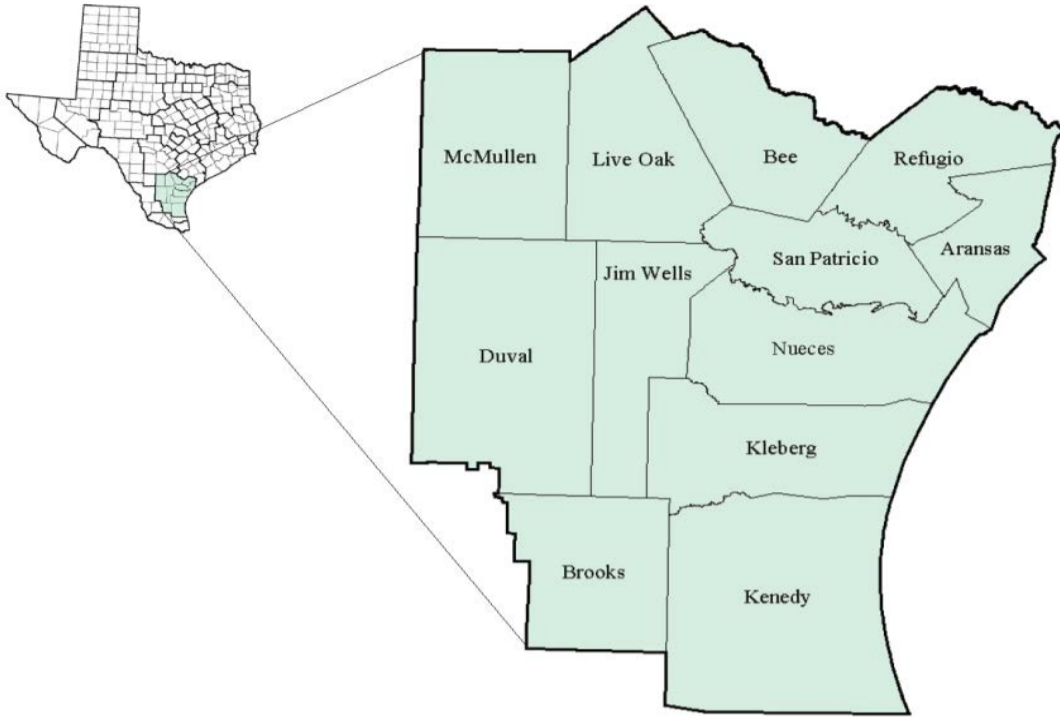
	Corpus Christi MSA				Texas (Actual)				United States (Actual)			
	C.L.F.	Emp.	Unemp.	Rate	C.L.F.	Emp.	Unemp.	Rate	C.L.F.	Emp.	Unemp.	Rate
Dec-16	213.2	200.3	12.9	6.1	13,398.8	12,788.9	609.9	4.6	158,968.0	151,798.0	7,170.0	4.5
Nov-16	212.3	200.5	11.8	5.6	13,390.5	12,823.8	566.7	4.2	159,451.0	152,385.0	7,066.0	4.4
Dec-15	208.9	197.8	11.0	5.3	13,136.9	12,580.2	556.7	4.2	157,245.0	149,703.0	7,542.0	4.8

Historical Unemployment Rates



Coastal Bend Workforce Development Area

December 2016



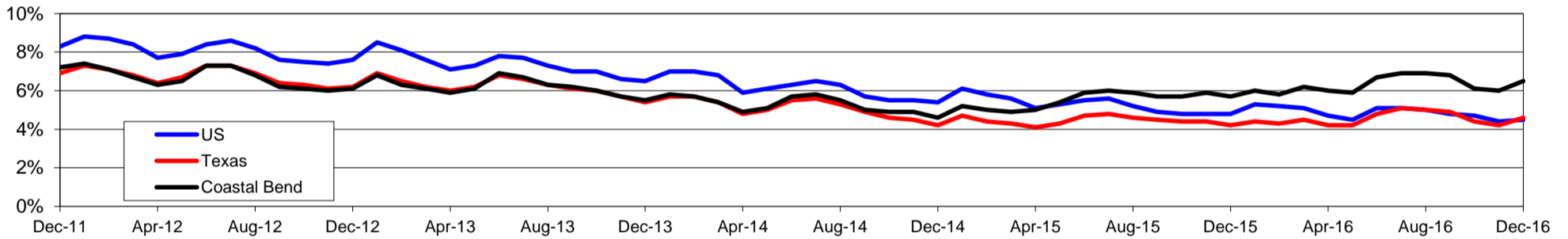
WDA Labor Force Statistics				
	Dec-16	Nov-16	Dec-15	OTY
CLF	270,628	269,804	269,531	1,097
Employed	253,088	253,650	254,134	-1,046
Unemployed	17,540	16,154	15,397	2,143
Rate	6.5%	6.0%	5.7%	0.8%

Texas Labor Force Statistics				
	Dec-16	Nov-16	Dec-15	OTY
CLF	13,398,817	13,390,507	13,136,901	261,916
Employed	12,788,890	12,823,827	12,580,195	208,695
Unemployed	609,927	566,680	556,706	53,221
Rate	4.6%	4.2%	4.2%	0.4%

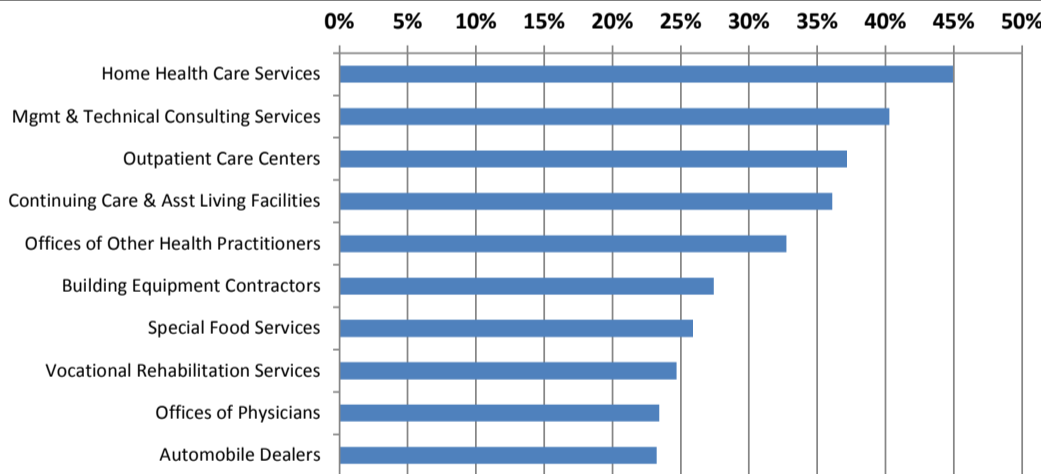
US Labor Force Statistics				
	Dec-16	Nov-16	Dec-15	OTY
CLF	158,968,000	159,451,000	157,245,000	1,723,000
Employed	151,798,000	152,385,000	149,703,000	2,095,000
Unemployed	7,170,000	7,066,000	7,542,000	-372,000
Rate	4.5%	4.4%	4.8%	-0.3%

Continued Claims for the Week of the 12th				
	Dec-16	Nov-16	Dec-15	OTY
WDA	4,324	4,166	4,669	-345
Texas	129,904	126,982	138,530	-8,626

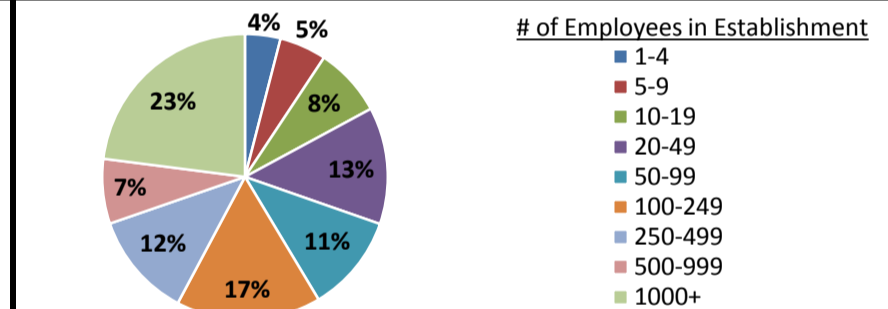
Historical Unemployment Rates



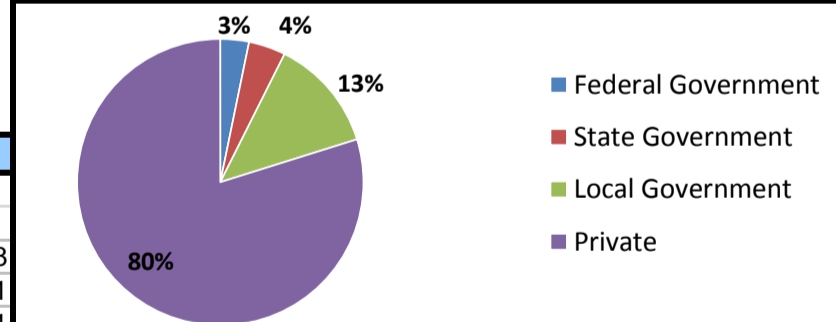
Projected Fastest Growing Industries in WDA (% growth 2014-2024)



Employment by Size Class (2nd Quarter 2016)



Employment by Ownership (2nd Quarter 2016)



Average Weekly Wage (2nd Quarter 2016)

	Q2 2016	Q1 2016	Q2 2015	Change	
				Quarter	Year
WDA	\$814	\$821	\$822	-\$7	-\$8
Texas	\$1,000	\$1,063	\$989	-\$63	\$11
US	\$989	\$1,042	\$968	-\$53	\$21

Employment by Industry (2nd Quarter 2016, Percent Change)

Industry	Employment	% of total	% Change	
			Quarter	Year
Natural resources and mining	9,592	4.1%	-14.0%	-35.4%
Construction	20,696	8.8%	2.8%	0.7%
Manufacturing	13,185	5.6%	-3.0%	-9.5%
Trade, transportation and utilities	43,998	18.8%	-0.5%	-5.3%
Information	2,249	1.0%	2.8%	-7.0%
Financial activities	9,433	4.0%	-2.3%	-10.0%
Professional and business services	18,633	7.9%	-1.4%	0.1%
Education and health services	65,581	28.0%	-0.1%	2.2%
Leisure and hospitality	32,525	13.9%	5.6%	-0.9%
Other services	6,495	2.8%	0.2%	-9.5%
Public administration	12,011	5.1%	0.7%	2.3%
Total	234,398	100.0%	-0.1%	-3.9%

Employment by Industry (2nd Quarter 2016)

