

# Coastal Bend Workforce Area

(Not Seasonally Adjusted Unemployment Rates by WDA, MSA, & County)

Area	Area Type	Latest Monthly Data December 2015						Previous Monthly Data November 2015				Year Ago December 2014			
		Labor Force	Employment	Unemployment	Rate	M+-	Y+-	Labor Force	Employment	Unemployment	Rate	Labor Force	Employment	Unemployment	Rate
United States	Nation	157,833,000	149,929,000	7,904,000	5.0	0.0	-0.6	157,367,000	149,444,000	7,924,000	5.0	156,129,000	147,442,000	8,688,000	5.6
Texas	State	13,097,113	12,486,860	610,253	4.7	0.1	0.1	13,070,635	12,472,249	598,386	4.6	13,171,837	12,570,050	601,787	4.6
Corpus Christi	MSA	211,884	200,826	11,058	5.2	-0.2	0.7	212,876	201,345	11,531	5.4	212,766	203,130	9,636	4.5
Coastal Bend	WDA	274,373	258,962	15,411	5.6	-0.3	1.1	276,339	260,170	16,169	5.9	278,610	266,180	12,430	4.5
Aransas	County	10,128	9,597	531	5.2	-0.2	0.3	10,181	9,633	548	5.4	10,227	9,729	498	4.9
Bee	County	10,042	9,394	648	6.5	-0.4	1.7	10,066	9,373	693	6.9	10,679	10,162	517	4.8
Brooks	County	2,639	2,376	263	10.0	-0.4	3.8	2,636	2,361	275	10.4	2,655	2,490	165	6.2
Duval	County	5,279	4,800	479	9.1	-0.3	4.4	5,427	4,917	510	9.4	5,559	5,298	261	4.7
Jim Wells	County	19,685	18,004	1,681	8.5	-0.5	4.3	20,083	18,280	1,803	9.0	20,201	19,362	839	4.2
Kenedy	County	316	309	7	2.2	-0.6	-0.2	324	315	9	2.8	340	332	8	2.4
Kleberg	County	14,506	13,659	847	5.8	-0.4	1.5	14,558	13,661	897	6.2	15,254	14,593	661	4.3
Live Oak	County	5,757	5,517	240	4.2	0.0	1.2	5,961	5,713	248	4.2	6,398	6,209	189	3.0
McMullen	County	985	968	17	1.7	0.1	-0.1	1,046	1,029	17	1.6	1,192	1,170	22	1.8
Nueces	County	170,596	162,129	8,467	5.0	-0.2	0.7	171,417	162,568	8,849	5.2	171,259	163,938	7,321	4.3
Refugio	County	3,280	3,109	171	5.2	-0.3	1.5	3,362	3,176	186	5.5	3,566	3,434	132	3.7
San Patricio	County	31,160	29,100	2,060	6.6	-0.2	0.8	31,278	29,144	2,134	6.8	31,280	29,463	1,817	5.8

(M+-) Change in unemployment rate from last month (Increase) (Decrease)

(Y+-) Change in unemployment rate from last year (Increase) (Decrease)

- Earnings for all occupations Coastal Bend, expressed as hourly rate (TWC):

<b>Coastal Bend</b>	<b>All Occupations-</b>	<b>Average \$18.35/hr.</b>	<b>Entry level \$8.58/hr.</b>	<b>Experienced workers \$23.24/hr.</b>	<b>Top 10% \$33.56/hr.</b>
<b>Texas</b>	<b>All Occupations-</b>	<b>Average \$20.97/hr.</b>	<b>Entry level \$8.88/hr.</b>	<b>Experienced workers \$ 27.02/hr.</b>	<b>Top 10% \$39.64/hr.</b>

- Educational Attainment for population 25 years of age and older - Corpus Christi (Census American Fact Finder/American Community Survey):

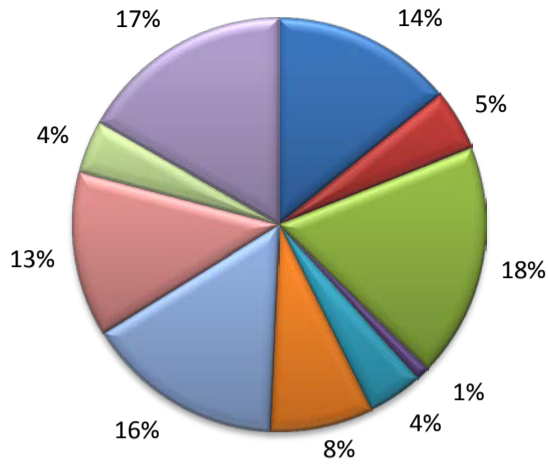
<b>Less than 9<sup>th</sup> grade</b>	<b>8.7%</b>	<b>12<sup>th</sup> grade &amp; GED</b>	<b>27.7%</b>	<b>Associates degree</b>	<b>7.0%</b>	<b>Graduate or Professional degrees</b>	<b>8.4%</b>
<b>9<sup>th</sup> thru 11<sup>th</sup> grade</b>	<b>9.3%</b>	<b>Some College</b>	<b>25.1%</b>	<b>Bachelors degree</b>	<b>13.8%</b>		

- Median earnings Corpus Christi by education for persons 25 years of age & up (Census AFF/ACS): **\$27,211** (\$36,380 male/ \$22,328 female)

<b>Less than High School</b>	<b>\$15,437</b>	<b>Some College or Associates</b>	<b>\$28,739</b>	<b>Graduate or Professional</b>	<b>\$56,681</b>
<b>High School &amp; GED</b>	<b>\$26,818</b>	<b>Bachelor's</b>	<b>\$44,078</b>		

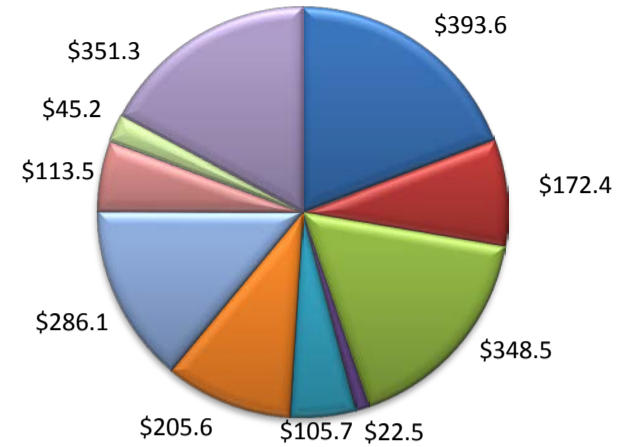
(Aransas, Nueces, San Patricio)

Industry Composition



- Mining, Logging, and Construction
- Manufacturing
- Trade, Transportation, and Utilities
- Information
- Financial Activities
- Professional and Business Services
- Education and Health Services
- Leisure and Hospitality
- Other Services
- Government

Wages by Industry (in millions)  
2nd Quarter 2015



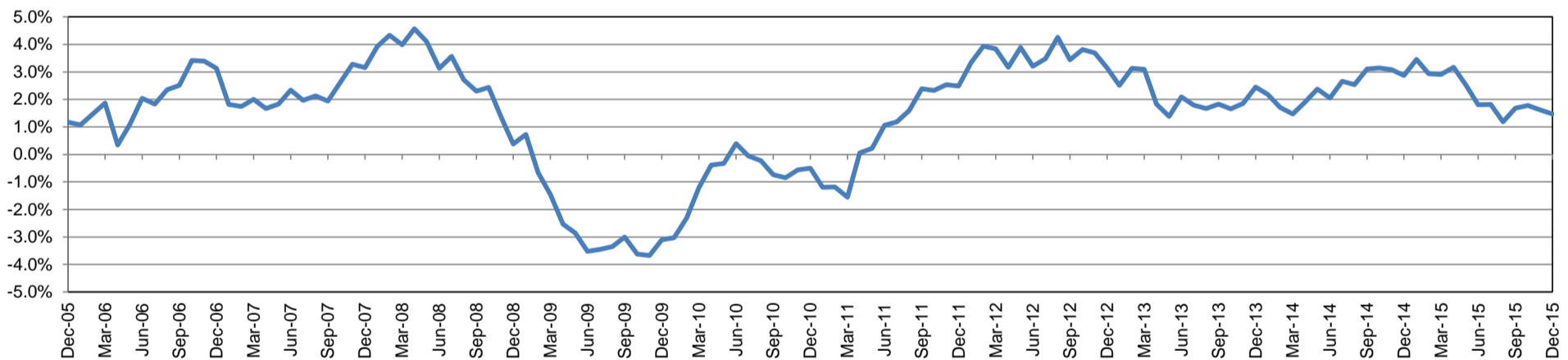
Employment by Industry

	Dec-15	Nov-15	Dec-14	Monthly Change		Annual Change	
				Actual	%	Actual	%
Total Nonfarm	200,400	201,000	197,500	-600	-0.3%	2,900	1.5%
Mining, Logging, and Construction	28,400	28,700	27,000	-300	-1.1%	1,400	5.2%
Manufacturing	9,600	9,700	10,000	-100	-1.0%	-400	-4.0%
Trade, Transportation, and Utilities	36,600	36,800	37,100	-200	-0.5%	-500	-1.4%
Information	2,200	2,200	2,100	0	0.0%	100	4.8%
Financial Activities	8,700	8,600	8,600	100	1.2%	100	1.2%
Professional and Business Services	16,100	16,100	15,600	0	0.0%	500	3.2%
Education and Health Services	31,100	31,000	30,200	100	0.3%	900	3.0%
Leisure and Hospitality	25,800	25,800	25,000	0	0.0%	800	3.2%
Other Services	8,300	8,300	8,200	0	0.0%	100	1.2%
Government	33,600	33,800	33,700	-200	-0.6%	-100	-0.3%

Industry Size Class

Size Class	Employees per firm	Number of Firms	June 2015	
			Employment in Size Class	% Total Employment
9	1000+	19	42,098	22.3%
8	500-999	20	13,790	7.3%
7	250-499	56	18,769	9.9%
6	100-249	215	33,145	17.5%
5	50-99	333	23,092	12.2%
4	20-49	836	25,621	13.6%
3	10-19	1,095	14,984	7.9%
2	5-9	1,532	10,184	5.4%
1	1-4	3,524	7,325	3.9%
0	0	626	0	0.0%
Total		8,256	189,008	100.0%

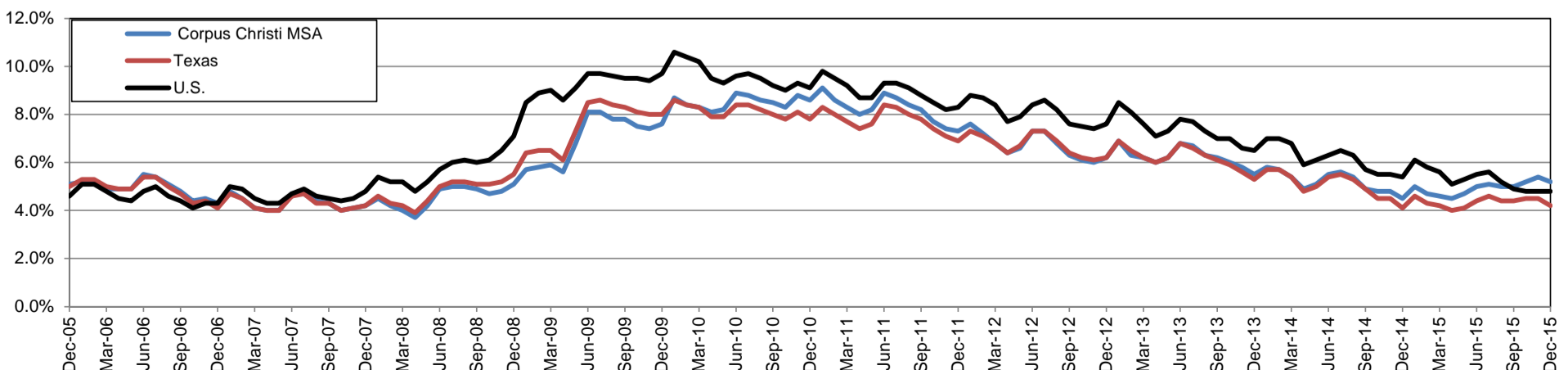
Annual Growth Rate for Total Nonagricultural Employment



Unemployment Information (all estimates in thousands)

	Corpus Christi MSA				Texas (Actual)				United States (Actual)			
	C.L.F.	Emp.	Unemp.	Rate	C.L.F.	Emp.	Unemp.	Rate	C.L.F.	Emp.	Unemp.	Rate
Dec-15	211.9	200.8	11.1	5.2	13,077.4	12,522.2	555.2	4.2	157,245.0	149,703.0	7,542.0	4.8
Nov-15	212.9	201.3	11.5	5.4	13,100.0	12,506.5	593.5	4.5	157,340.0	149,766.0	7,573.0	4.8
Dec-14	212.8	203.1	9.6	4.5	13,152.2	12,612.1	540.1	4.1	155,521.0	147,190.0	8,331.0	5.4

Historical Unemployment Rates

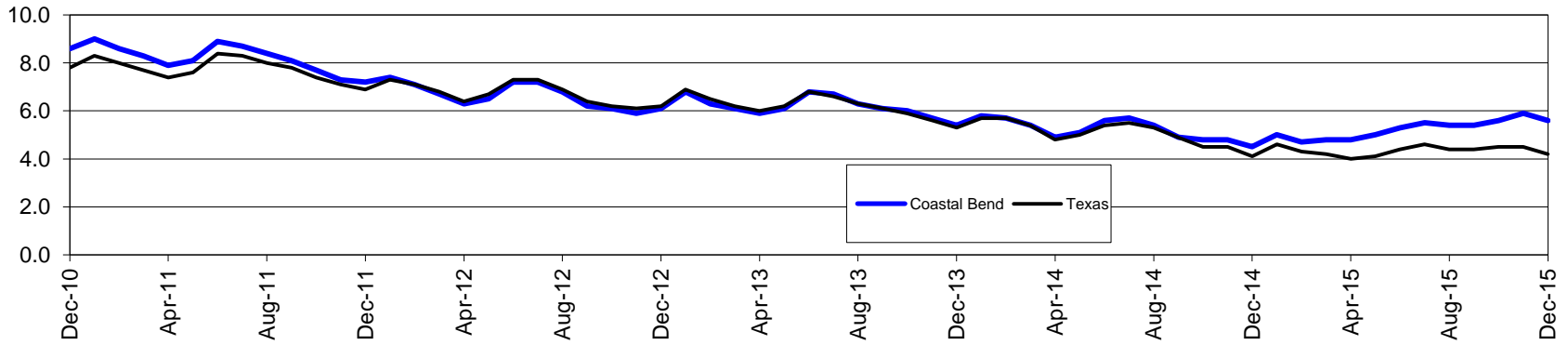


# Coastal Bend Workforce Development Area\*

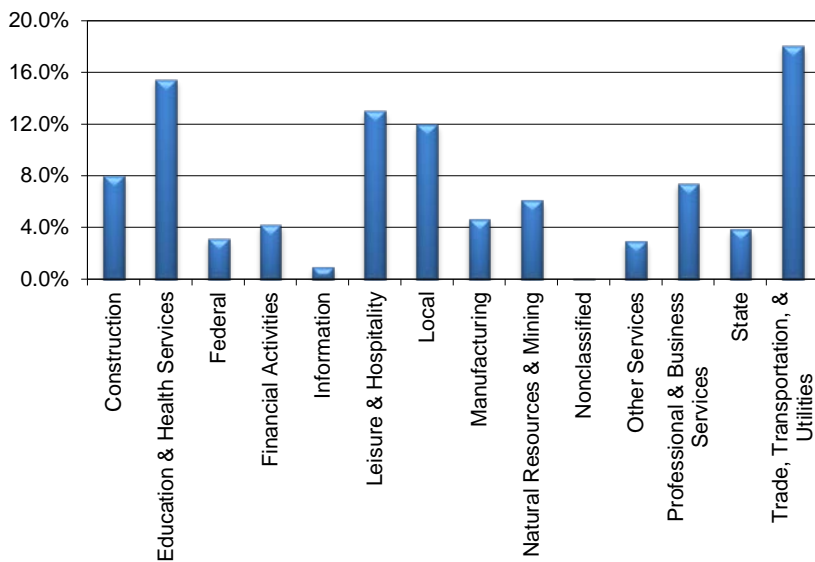
December 2015

Coastal Bend WDA					Texas				
	CLF	Employed	Unemployed	Rate		CLF	Employed	Unemployed	Rate
<b>Dec-15</b>	274,373	258,962	15,411	5.6	<b>Dec-15</b>	13,077,390	12,522,151	555,239	4.2
<b>Nov-15</b>	276,339	260,170	16,169	5.9	<b>Nov-15</b>	13,099,997	12,506,534	593,463	4.5
<b>Dec-14</b>	278,610	266,180	12,430	4.5	<b>Dec-14</b>	13,152,203	12,612,084	540,119	4.1

## Historical Unemployment Rates



## Coastal Bend WDA Industry Composition 2nd Quarter 2015



## Total WDA Claims

### Continued Claims for the Week of the 12th

	Dec-15	Nov-15	Dec-14	OTY
<b>Continued</b>	4,650	4,393	2,894	1,756

### Texas Unemployment Insurance Claims

#### Continued Claims for the Week of the 12th

	Dec-15	Nov-15	Dec-14	OTY
<b>Continued</b>	138,530	134,003	106,015	32,515

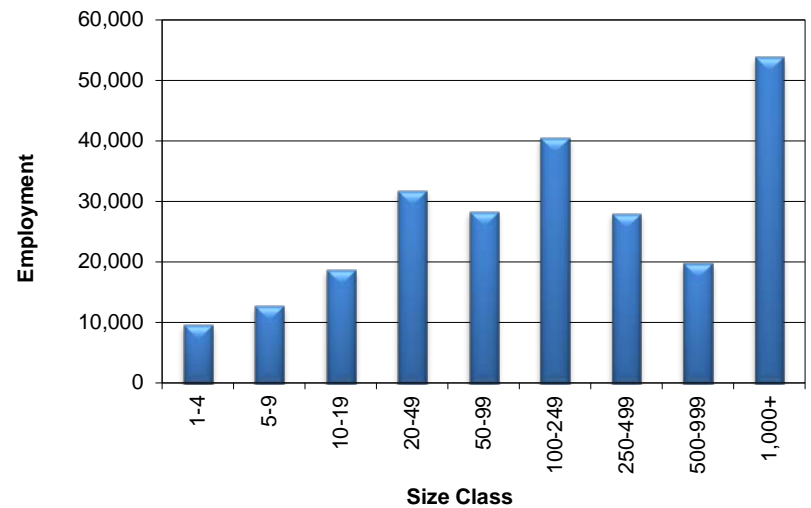
## Coastal Bend WDA Average Weekly Wage

	Coastal Bend	Texas
<b>2nd Quarter 2015</b>	\$820.10	\$988.47
<b>1st Quarter 2015</b>	\$863.77	\$1,088.07
<b>2nd Quarter 2014</b>	\$829.17	\$973.16
<b>Quarter Change</b>	-\$43.67	-\$99.60
<b>OTY Change</b>	-\$9.07	\$15.31

## NAICS Covered Employment Quarterly Data 2nd Quarter 2015

SUPER SECTOR	Employment	Change	
		Quarter	Year
Construction	19,559	-273	-248
Education & Health Services	37,684	444	474
Federal	7,710	-53	-74
Financial Activities	10,330	-63	-77
Information	2,289	131	-111
Leisure & Hospitality	31,879	2,031	955
Local	29,288	46	-2
Manufacturing	11,240	-210	-522
Natural Resources & Mining	14,858	-3,047	-3,933
Nonclassified	48	18	18
Other Services	7,129	-8	-465
Professional & Business Services	18,190	-388	626
State	9,492	87	212
Trade, Transportation, & Utilities	44,135	-258	1
<b>TOTAL</b>	<b>243,831</b>	<b>-1,543</b>	<b>-3,146</b>

## Size Class Employment Composition 2nd Quarter 2015



\*Counties in WDA: Aransas, Bee, Brooks, Duval, Jim Wells, Kenedy, Kleberg, Live Oak, McMullen, Nueces, Refugio, & San Patricio