

Coastal Bend Workforce Area

(Not Seasonally Adjusted Unemployment Rates by WDA, MSA, & County)

Area	Area Type	Latest Monthly Data August 2016						Previous Monthly Data July 2016				Year Ago August 2015			
		Labor Force	Employment	Unemployment	Rate	M+-	Y+-	Labor Force	Employment	Unemployment	Rate	Labor Force	Employment	Unemployment	Rate
United States	Nation	159,463,000	151,614,000	7,849,000	4.9	0.0	-0.2	159,287,000	151,517,000	7,770,000	4.9	157,061,000	149,043,000	8,018,000	5.1
Texas	State	13,311,880	12,690,074	621,806	4.7	0.1	0.3	13,291,310	12,682,254	609,056	4.6	13,071,794	12,491,432	580,362	4.4
Corpus Christi	MSA	212,334	199,190	13,144	6.2	0.0	0.8	212,424	199,236	13,188	6.2	207,135	196,018	11,117	5.4
Coastal Bend	WDA	271,945	253,307	18,638	6.9	0.0	1.0	272,044	253,266	18,778	6.9	267,915	252,117	15,798	5.9
Aransas	County	10,268	9,665	603	5.9	0.0	0.7	10,267	9,663	604	5.9	10,028	9,510	518	5.2
Bee	County	10,440	9,554	886	8.5	-0.1	1.5	10,394	9,504	890	8.6	10,145	9,436	709	7.0
Brooks	County	2,443	2,136	307	12.6	-0.6	-0.1	2,479	2,151	328	13.2	2,584	2,255	329	12.7
Duval	County	4,878	4,287	591	12.1	0.1	3.3	4,877	4,292	585	12.0	5,060	4,615	445	8.8
Jim Wells	County	17,964	15,929	2,035	11.3	-0.3	1.9	18,071	15,976	2,095	11.6	19,003	17,226	1,777	9.4
Kenedy	County	221	209	12	5.4	0.2	1.8	211	200	11	5.2	251	242	9	3.6
Kleberg	County	13,880	12,782	1,098	7.9	-0.1	1.0	13,752	12,657	1,095	8.0	13,849	12,900	949	6.9
Live Oak	County	5,784	5,467	317	5.5	-0.1	1.2	5,792	5,466	326	5.6	5,725	5,480	245	4.3
McMullen	County	900	880	20	2.2	-0.4	-0.3	928	904	24	2.6	924	901	23	2.5
Nueces	County	170,802	160,691	10,111	5.9	0.0	0.8	170,937	160,768	10,169	5.9	166,674	158,107	8,567	5.1
Refugio	County	3,101	2,873	228	7.4	-0.2	1.4	3,116	2,880	236	7.6	3,239	3,044	195	6.0
San Patricio	County	31,264	28,834	2,430	7.8	0.1	1.1	31,220	28,805	2,415	7.7	30,433	28,401	2,032	6.7

(M+-) Change in unemployment rate from last month (Increase) (Decrease)

(Y+-) Change in unemployment rate from last year (Increase) (Decrease)

- Earnings for all occupations Coastal Bend, expressed as hourly rate (TWC):

Coastal Bend	All Occupations-	Average \$18.35/hr.	Entry level \$8.58/hr.	Experienced workers \$23.24/hr.	Top 10% \$33.56/hr.
Texas	All Occupations-	Average \$20.97/hr.	Entry level \$8.88/hr.	Experienced workers \$ 27.02/hr.	Top 10% \$39.64/hr.

- Educational Attainment for population 25 years of age and older - Corpus Christi (Census American Fact Finder/American Community Survey):

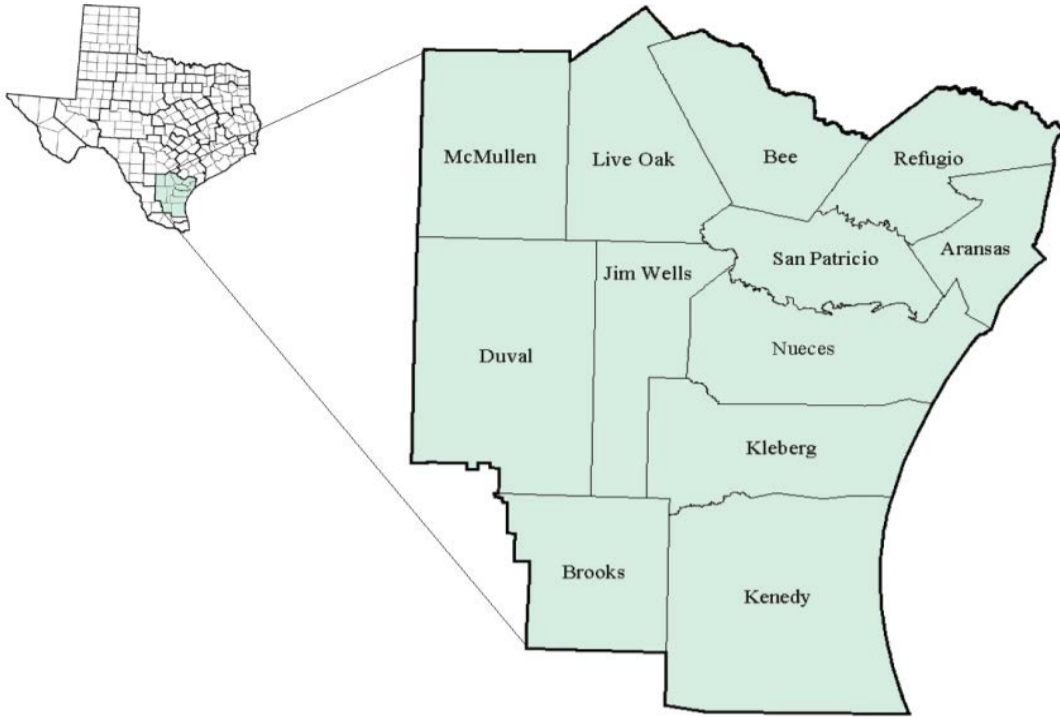
Less than 9th grade	8.7%	12th grade & GED	27.7%	Associates degree	7.0%	Graduate or Professional degrees	8.4%
9th thru 11th grade	9.3%	Some College	25.1%	Bachelors degree	13.8%		

- Median earnings Corpus Christi by education for persons 25 years of age & up (Census AFF/ACS): **\$27,211** (\$36,380 male/ \$22,328 female)

Less than High School	\$15,437	Some College or Associates	\$28,739	Graduate or Professional	\$56,681
High School & GED	\$26,818	Bachelor's	\$44,078		

Coastal Bend Workforce Development Area

August 2016



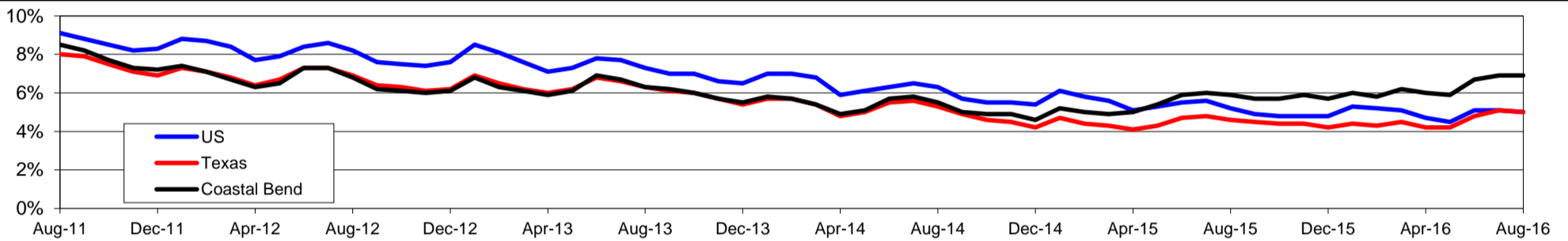
WDA Labor Force Statistics				
	Aug-16	Jul-16	Aug-15	OTY
CLF	271,945	272,044	267,915	4,030
Employed	253,307	253,266	252,117	1,190
Unemployed	18,638	18,778	15,798	2,840
Rate	6.9%	6.9%	5.9%	1.0%

Texas Labor Force Statistics				
	Aug-16	Jul-16	Aug-15	OTY
CLF	13,378,918	13,386,057	13,047,642	331,276
Employed	12,709,695	12,706,620	12,447,603	262,092
Unemployed	669,223	679,437	600,039	69,184
Rate	5.0%	5.1%	4.6%	0.4%

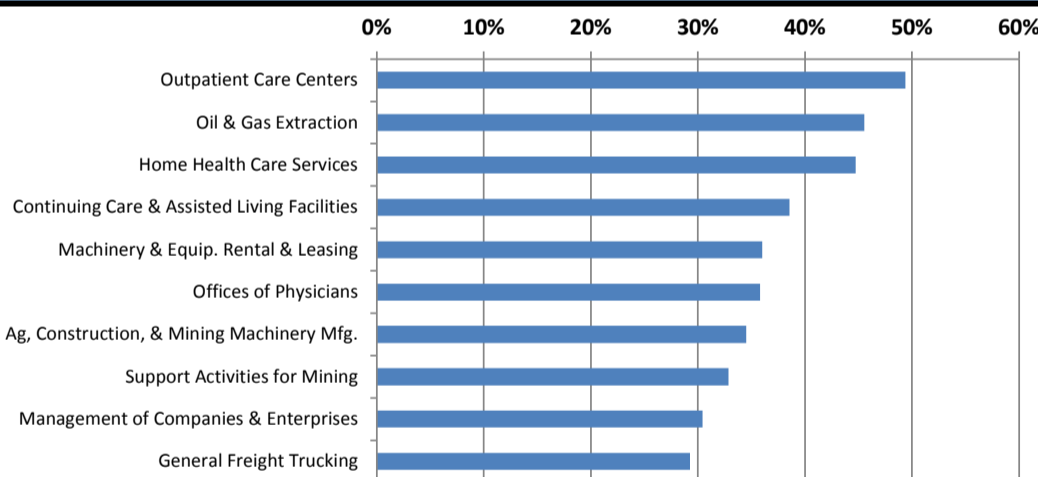
US Labor Force Statistics				
	Aug-16	Jul-16	Aug-15	OTY
CLF	159,800,000	160,705,000	157,390,000	2,410,000
Employed	151,804,000	152,437,000	149,228,000	2,576,000
Unemployed	7,996,000	8,267,000	8,162,000	-166,000
Rate	5.0%	5.1%	5.2%	-0.2%

Continued Claims for the Week of the 12th				
	Aug-16	Jul-16	Aug-15	OTY
WDA	4,559	5,039	4,695	-136
Texas	147,686	157,732	144,204	3,482

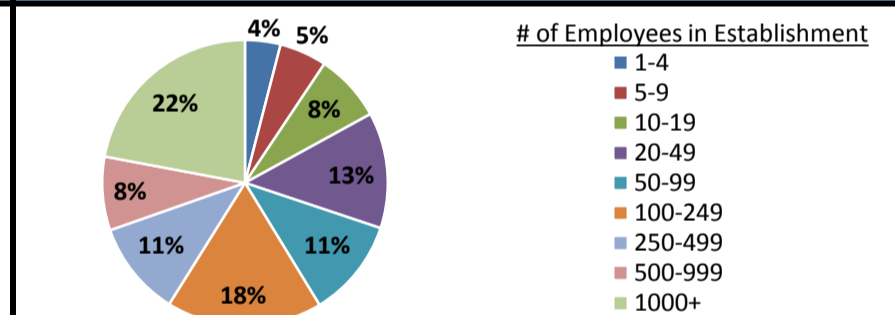
Historical Unemployment Rates



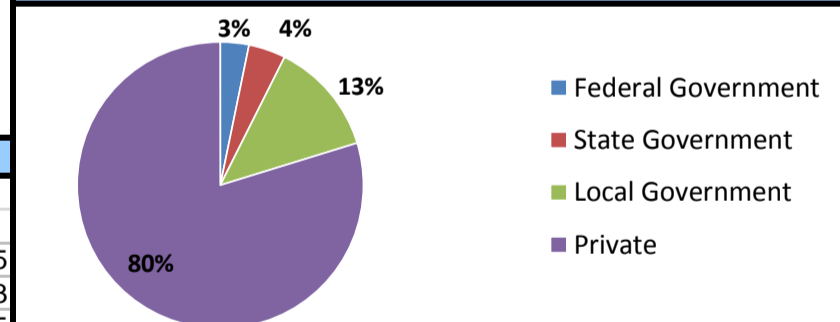
Projected Fastest Growing Industries in WDA (% growth 2012-2022)



Employment by Size Class (1st Quarter 2016)



Employment by Ownership (1st Quarter 2016)



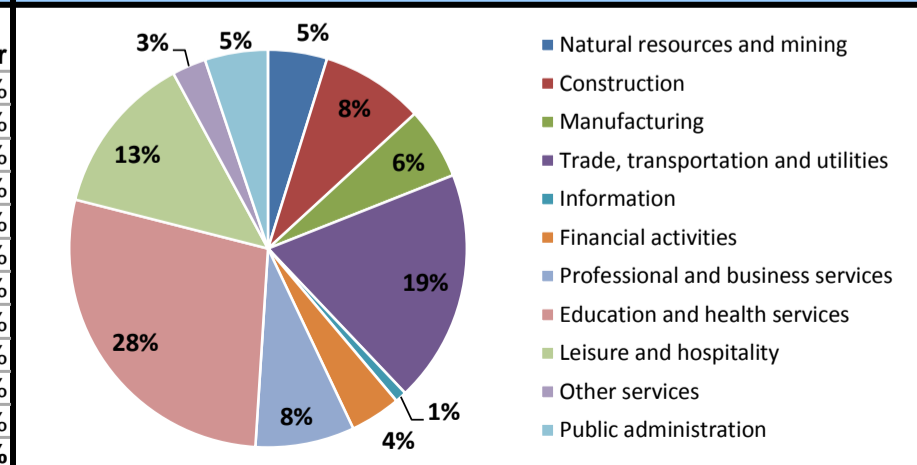
Average Weekly Wage (1st Quarter 2016)

	Q1 2016	Q4 2015	Q1 2015	Change	
				Quarter	Year
WDA	\$822	\$897	\$867	-\$75	-\$45
Texas	\$1,066	\$1,099	\$1,089	-\$33	-\$23
US	\$1,043	\$1,083	\$1,048	-\$40	-\$5

Employment by Industry (1st Quarter 2016, Percent Change)

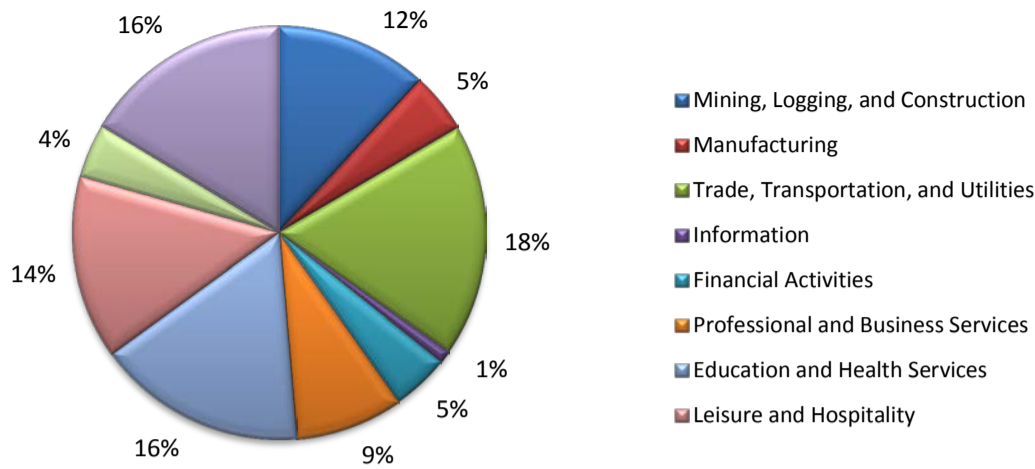
Industry	Employment	% of total	% Change	
			Quarter	Year
Natural resources and mining	11,201	4.8%	-13.8%	-37.4%
Construction	19,575	8.4%	-4.4%	-5.9%
Manufacturing	13,556	5.8%	-3.6%	-8.4%
Trade, transportation and utilities	44,132	18.9%	-5.1%	-5.5%
Information	2,186	0.9%	-10.8%	-4.2%
Financial activities	9,577	4.1%	-8.2%	-9.2%
Professional and business services	18,828	8.1%	-1.1%	-1.0%
Education and health services	65,223	27.9%	-0.8%	2.2%
Leisure and hospitality	30,696	13.2%	-1.9%	0.0%
Other services	6,437	2.8%	-5.7%	-10.5%
Public administration	11,962	5.1%	0.2%	3.1%
Total	233,373	100.0%	-3.5%	-4.9%

Employment by Industry (1st Quarter 2016)



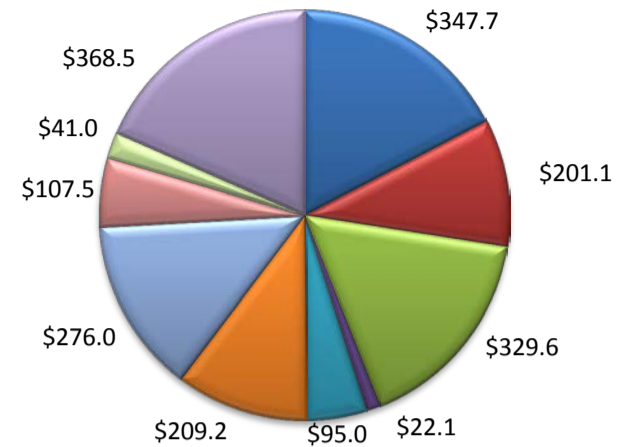
(Aransas, Nueces, San Patricio)

Industry Composition



Wages by Industry (in millions)

1st Quarter 2016



Employment by Industry

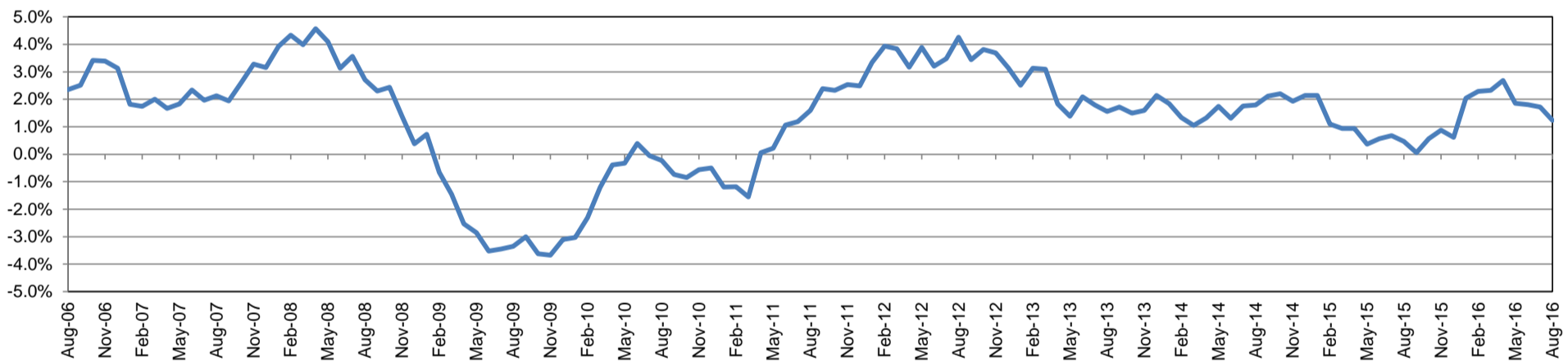
	Aug-16	Jul-16	Aug-15	Monthly Change		Annual Change	
				Actual	%	Actual	%
Total Nonfarm	195,900	195,900	193,500	0	0.0%	2,400	1.2%
Mining, Logging, and Construction	23,200	23,100	23,900	100	0.4%	-700	-2.9%
Manufacturing	9,200	9,200	9,400	0	0.0%	-200	-2.1%
Trade, Transportation, and Utilities	35,600	35,700	35,800	-100	-0.3%	-200	-0.6%
Information	2,000	2,000	2,100	0	0.0%	-100	-4.8%
Financial Activities	8,800	8,700	8,500	100	1.2%	300	3.5%
Professional and Business Services	16,500	16,600	17,200	-100	-0.6%	-700	-4.1%
Education and Health Services	32,100	32,300	29,800	-200	-0.6%	2,300	7.7%
Leisure and Hospitality	28,100	28,100	27,000	0	0.0%	1,100	4.1%
Other Services	8,300	8,300	8,100	0	0.0%	200	2.5%
Government	32,100	31,900	31,700	200	0.6%	400	1.3%

Industry Size Class

March 2016

Size Class	Employees per firm	Number of Firms	Employment in Size Class	% Total Employment
9	1000+	18	41,172	22.5%
8	500-999	19	13,332	7.3%
7	250-499	46	16,198	8.9%
6	100-249	225	34,027	18.6%
5	50-99	309	21,121	11.5%
4	20-49	837	25,482	13.9%
3	10-19	1,054	14,441	7.9%
2	5-9	1,508	9,989	5.5%
1	1-4	3,442	7,151	3.9%
0	0	641	0	0.0%
Total		8,099	182,913	100.0%

Annual Growth Rate for Total Nonagricultural Employment



Unemployment Information (all estimates in thousands)

	Corpus Christi MSA				Texas (Actual)				United States (Actual)			
	C.L.F.	Emp.	Unemp.	Rate	C.L.F.	Emp.	Unemp.	Rate	C.L.F.	Emp.	Unemp.	Rate
Aug-16	212.3	199.2	13.1	6.2	13,378.9	12,709.7	669.2	5.0	159,800.0	151,804.0	7,996.0	5.0
Jul-16	212.4	199.2	13.2	6.2	13,386.1	12,706.6	679.4	5.1	160,705.0	152,437.0	8,267.0	5.1
Aug-15	207.1	196.0	11.1	5.4	13,047.6	12,447.6	600.0	4.6	157,390.0	149,228.0	8,162.0	5.2

Historical Unemployment Rates

