

Coastal Bend Workforce Area

(Not Seasonally Adjusted Unemployment Rates by WDA, MSA, & County)

Area	Area Type	Latest Monthly Data August 2015						Previous Monthly Data July 2015				Year Ago August 2014			
		Labor Force	Employment	Unemployment	Rate	M+-	Y+-	Labor Force	Employment	Unemployment	Rate	Labor Force	Employment	Unemployment	Rate
United States	Nation	157,065,000	149,036,000	8,029,000	5.1	-0.2	-1.0	157,106,000	148,840,000	8,266,000	5.3	156,018,000	146,451,000	9,568,000	6.1
Texas	State	13,011,942	12,473,904	538,038	4.1	-0.1	-0.8	13,035,413	12,494,236	541,177	4.2	13,112,850	12,473,503	639,347	4.9
Corpus Christi	MSA	209,620	199,037	10,583	5.0	-0.1	-0.4	210,187	199,425	10,762	5.1	211,631	200,221	11,410	5.4
Coastal Bend	WDA	276,449	261,407	15,042	5.4	-0.1	0.0	277,200	261,929	15,271	5.5	277,455	262,405	15,050	5.4
Aransas	County	10,021	9,528	493	4.9	-0.1	-0.7	10,079	9,577	502	5.0	10,170	9,598	572	5.6
Bee	County	10,688	10,011	677	6.3	-0.3	0.3	10,712	10,001	711	6.6	10,930	10,276	654	6.0
Brooks	County	2,755	2,444	311	11.3	0.9	2.1	2,719	2,437	282	10.4	2,686	2,439	247	9.2
Duval	County	5,742	5,316	426	7.4	-0.4	1.5	5,783	5,332	451	7.8	5,622	5,290	332	5.9
Jim Wells	County	20,892	19,194	1,698	8.1	0.1	2.7	20,899	19,228	1,671	8.0	20,161	19,078	1,083	5.4
Kenedy	County	355	347	8	2.3	-0.2	-0.4	363	354	9	2.5	335	326	9	2.7
Kleberg	County	14,872	13,971	901	6.1	-0.2	0.1	14,929	13,995	934	6.3	15,075	14,176	899	6.0
Live Oak	County	6,622	6,387	235	3.5	-0.2	-0.2	6,628	6,381	247	3.7	6,306	6,073	233	3.7
McMullen	County	1,275	1,255	20	1.6	0.1	-0.2	1,295	1,276	19	1.5	1,100	1,080	20	1.8
Nueces	County	168,810	160,654	8,156	4.8	-0.1	-0.4	169,227	160,916	8,311	4.9	170,393	161,512	8,881	5.2
Refugio	County	3,628	3,445	183	5.0	0.0	0.5	3,685	3,500	185	5.0	3,609	3,446	163	4.5
San Patricio	County	30,789	28,855	1,934	6.3	0.0	0.0	30,881	28,932	1,949	6.3	31,068	29,111	1,957	6.3

(M+-) Change in unemployment rate from last month (Increase) (Decrease)

(Y+-) Change in unemployment rate from last year (Increase) (Decrease)

- Earnings for all occupations Coastal Bend, expressed as hourly rate (TWC):

Coastal Bend	All Occupations-	Average \$18.35/hr.	Entry level \$8.58/hr.	Experienced workers \$23.24/hr.	Top 10% \$33.56/hr.
Texas	All Occupations-	Average \$20.97/hr.	Entry level \$8.88/hr.	Experienced workers \$ 27.02/hr.	Top 10% \$39.64/hr.

- Educational Attainment for population 25 years of age and older - Corpus Christi (Census American Fact Finder/American Community Survey):

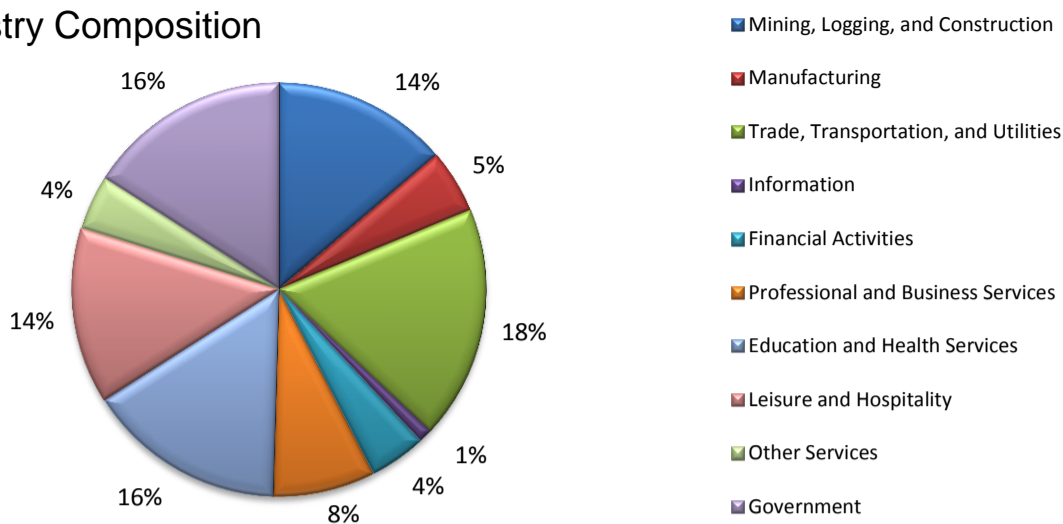
Less than 9 th grade	8.7%	12 th grade & GED	27.7%	Associates degree	7.0%	Graduate or Professional degrees	8.4%
9 th thru 11 th grade	9.3%	Some College	25.1%	Bachelors degree	13.8%		

- Median earnings Corpus Christi by education for persons 25 years of age & up (Census AFF/ACS): **\$27,211** (\$36,380 male/ \$22,328 female)

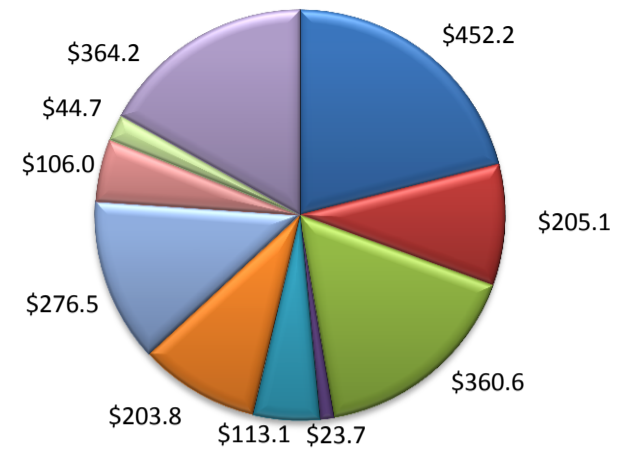
Less than High School	\$15,437	Some College or Associates	\$28,739	Graduate or Professional	\$56,681
High School & GED	\$26,818	Bachelor's	\$44,078		

(Aransas, Nueces, San Patricio)

Industry Composition



Wages by Industry (in millions)
1st Quarter 2015



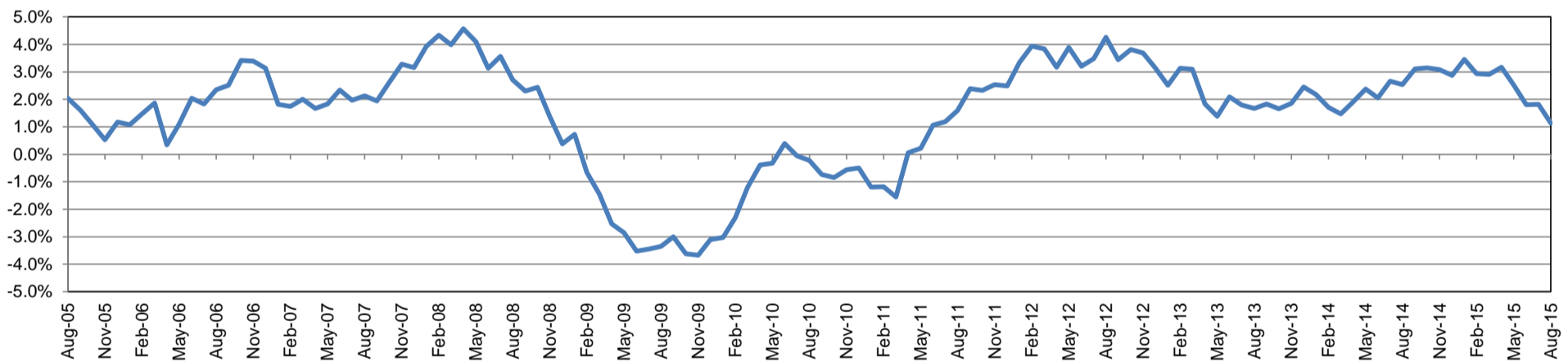
Employment by Industry

	Aug-15	Jul-15	Aug-14	Monthly Change		Annual Change	
				Actual	%	Actual	%
Total Nonfarm	196,400	196,500	194,200	-100	-0.1%	2,200	1.1%
Mining, Logging, and Construction	27,000	26,800	26,300	200	0.8%	700	2.7%
Manufacturing	9,800	9,700	10,000	100	1.0%	-200	-2.0%
Trade, Transportation, and Utilities	35,900	36,400	35,800	-500	-1.4%	100	0.3%
Information	2,100	2,100	2,100	0	0.0%	0	0.0%
Financial Activities	8,600	8,600	8,500	0	0.0%	100	1.2%
Professional and Business Services	15,700	15,600	16,300	100	0.6%	-600	-3.7%
Education and Health Services	30,500	30,400	29,600	100	0.3%	900	3.0%
Leisure and Hospitality	27,100	27,200	26,000	-100	-0.4%	1,100	4.2%
Other Services	8,400	8,500	8,300	-100	-1.2%	100	1.2%
Government	31,300	31,200	31,300	100	0.3%	0	0.0%

Industry Size Class March 2015

Size Class	Employees per firm	Number of Firms	Employment in Size Class	% Total Employment
9	1000+	19	42,864	22.6%
8	500-999	20	14,579	7.7%
7	250-499	58	19,768	10.4%
6	100-249	215	33,098	17.5%
5	50-99	310	21,606	11.4%
4	20-49	829	25,390	13.4%
3	10-19	1,096	14,935	7.9%
2	5-9	1,525	10,041	5.3%
1	1-4	3,557	7,320	3.9%
0	0	650	0	0.0%
Total		8,279	189,601	100.0%

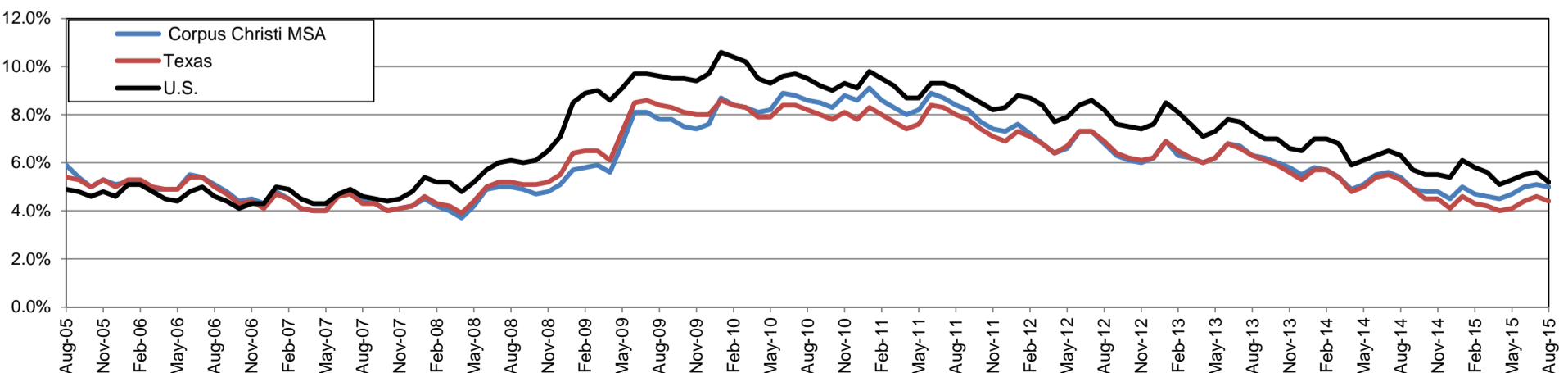
Annual Growth Rate for Total Nonagricultural Employment



Unemployment Information (all estimates in thousands)

	Corpus Christi MSA				Texas (Actual)				United States (Actual)			
	C.L.F.	Emp.	Unemp.	Rate	C.L.F.	Emp.	Unemp.	Rate	C.L.F.	Emp.	Unemp.	Rate
Aug-15	209.6	199.0	10.6	5.0	13,029.5	12,459.7	569.8	4.4	157,390.0	149,228.0	8,162.0	5.2
Jul-15	210.2	199.4	10.8	5.1	13,082.1	12,485.0	597.1	4.6	158,527.0	149,722.0	8,805.0	5.6
Aug-14	211.6	200.2	11.4	5.4	13,093.4	12,399.7	693.7	5.3	156,434.0	146,647.0	9,787.0	6.3

Historical Unemployment Rates

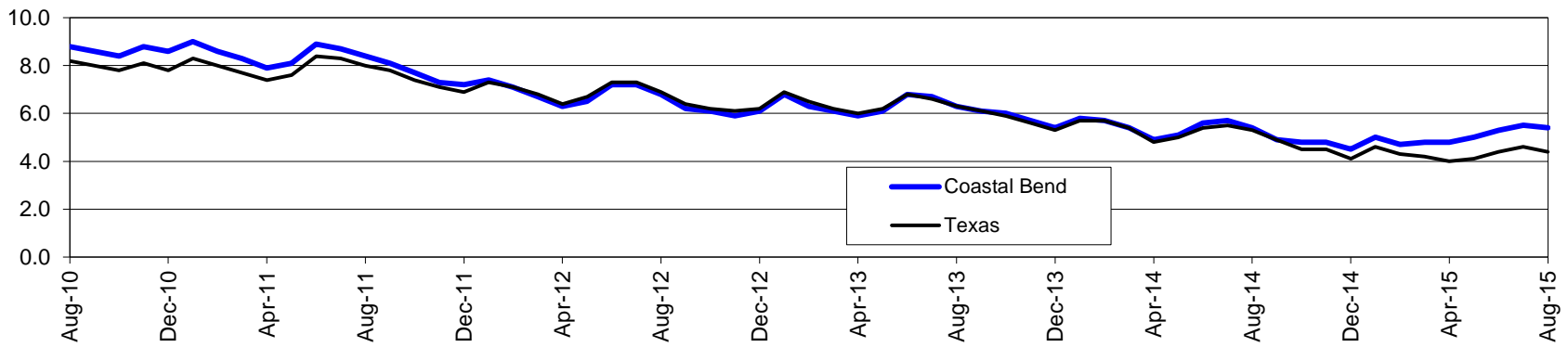


Coastal Bend Workforce Development Area*

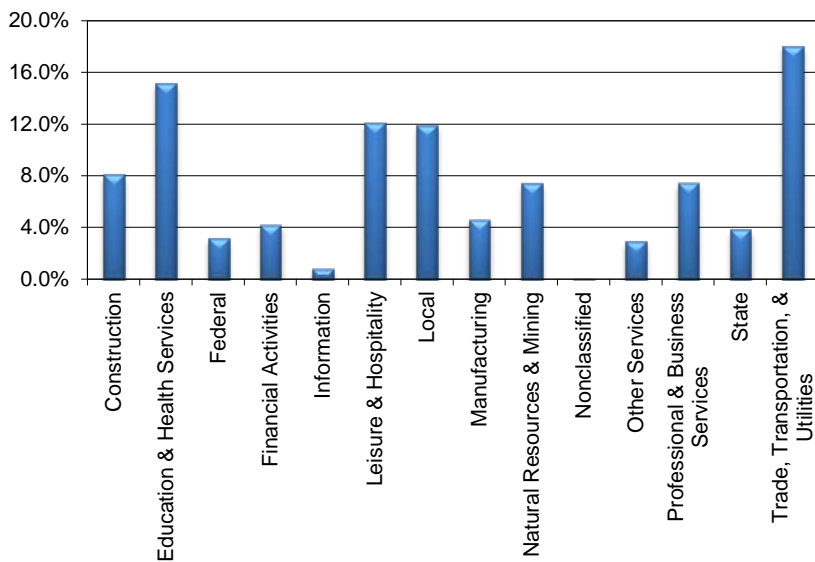
August 2015

Coastal Bend WDA					Texas				
	CLF	Employed	Unemployed	Rate		CLF	Employed	Unemployed	Rate
Aug-15	276,449	261,407	15,042	5.4	Aug-15	13,029,483	12,459,675	569,808	4.4
Jul-15	277,200	261,929	15,271	5.5	Jul-15	13,082,139	12,485,043	597,096	4.6
Aug-14	277,455	262,405	15,050	5.4	Aug-14	13,093,423	12,399,705	693,718	5.3

Historical Unemployment Rates



Coastal Bend WDA Industry Composition 1st Quarter 2015



Total WDA Claims

Continued Claims for the Week of the 12th

	Aug-15	Jul-15	Aug-14	OTY
Continued	4,682	4,786	2,557	2,125

Texas Unemployment Insurance Claims

Continued Claims for the Week of the 12th

	Aug-15	Jul-15	Aug-14	OTY
Continued	143,198	148,988	117,750	25,448

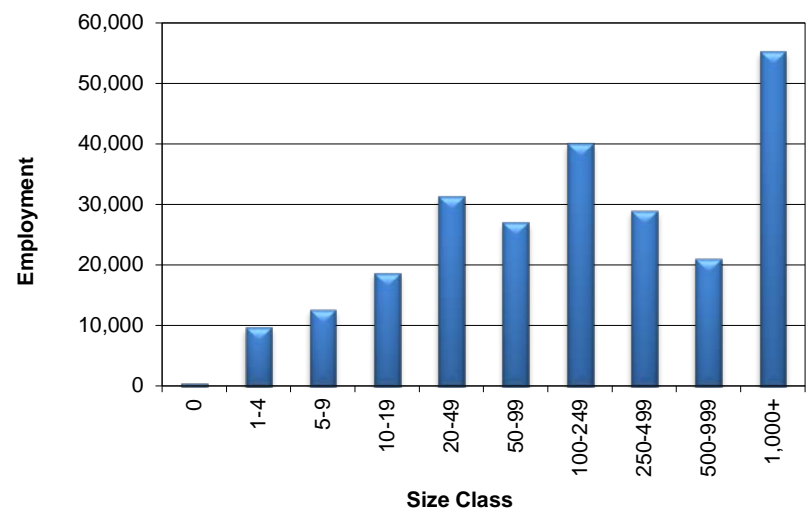
Coastal Bend WDA Average Weekly Wage

	Coastal Bend	Texas
1st Quarter 2015	\$867.84	\$1,089.18
4th Quarter 2014	\$913.85	\$1,070.14
1st Quarter 2014	\$855.01	\$1,062.09
Quarter Change	-\$46.01	\$19.04
OTY Change	\$12.83	\$27.09

NAICS Covered Employment Quarterly Data 1st Quarter 2015

SUPER SECTOR	Employment	Change	
		Quarter	Year
Construction	19,828	-880	62
Education & Health Services	37,256	-424	183
Federal	7,800	59	32
Financial Activities	10,410	-283	300
Information	2,128	-205	-223
Leisure & Hospitality	29,859	-126	840
Local	29,242	-121	-125
Manufacturing	11,452	-151	-102
Natural Resources & Mining	18,161	-1,501	-389
Nonclassified	53	3	30
Other Services	7,143	-265	-189
Professional & Business Services	18,401	-30	1,056
State	9,405	-323	2
Trade, Transportation, & Utilities	44,357	-939	640
TOTAL	245,495	-5,186	2,117

Size Class Employment Composition 1st Quarter 2015



*Counties in WDA: Aransas, Bee, Brooks, Duval, Jim Wells, Kenedy, Kleberg, Live Oak, McMullen, Nueces, Refugio, & San Patricio