

Coastal Bend Workforce Area

(Not Seasonally Adjusted Unemployment Rates by WDA, MSA, & County)

Area	Area Type	Latest Monthly Data April 2016						Previous Monthly Data March 2016				Year Ago April 2015			
		Labor Force	Employment	Unemployment	Rate	M+-	Y+-	Labor Force	Employment	Unemployment	Rate	Labor Force	Employment	Unemployment	Rate
United States	Nation	158,924,000	151,004,000	7,920,000	5.0	0.0	-0.4	159,286,000	151,320,000	7,966,000	5.0	157,032,000	148,509,000	8,523,000	5.4
Texas	State	13,302,952	12,715,840	587,112	4.4	0.1	0.0	13,273,521	12,696,468	577,053	4.3	13,029,969	12,460,225	569,744	4.4
Corpus Christi	MSA	213,221	201,816	11,405	5.3	-0.3	0.6	213,530	201,563	11,967	5.6	207,708	197,958	9,750	4.7
Coastal Bend	WDA	274,353	257,879	16,474	6.0	-0.2	1.0	275,163	258,103	17,060	6.2	271,055	257,493	13,562	5.0
Aransas	County	10,346	9,822	524	5.1	-0.3	0.6	10,348	9,791	557	5.4	10,103	9,644	459	4.5
Bee	County	10,512	9,746	766	7.3	-0.1	1.6	10,474	9,703	771	7.4	10,574	9,970	604	5.7
Brooks	County	2,549	2,239	310	12.2	0.1	3.5	2,591	2,277	314	12.1	2,621	2,394	227	8.7
Duval	County	5,133	4,539	594	11.6	0.3	4.0	5,186	4,600	586	11.3	5,355	4,947	408	7.6
Jim Wells	County	18,681	16,779	1,902	10.2	0.0	3.1	18,931	17,006	1,925	10.2	19,487	18,112	1,375	7.1
Kenedy	County	252	243	9	3.6	-0.8	1.0	273	261	12	4.4	302	294	8	2.6
Kleberg	County	14,187	13,226	961	6.8	-0.1	1.5	14,302	13,321	981	6.9	14,748	13,965	783	5.3
Live Oak	County	5,624	5,327	297	5.3	0.3	1.7	5,670	5,385	285	5.0	5,866	5,652	214	3.6
McMullen	County	941	920	21	2.2	-0.2	0.4	921	899	22	2.4	1,001	983	18	1.8
Nueces	County	171,425	162,736	8,689	5.1	-0.2	0.7	171,709	162,526	9,183	5.3	167,026	159,597	7,429	4.4
Refugio	County	3,253	3,044	209	6.4	0.4	1.2	3,285	3,088	197	6.0	3,393	3,218	175	5.2
San Patricio	County	31,450	29,258	2,192	7.0	-0.1	0.9	31,473	29,246	2,227	7.1	30,579	28,717	1,862	6.1

(M+-) Change in unemployment rate from last month (Increase) (Decrease)

(Y+-) Change in unemployment rate from last year (Increase) (Decrease)

- Earnings for all occupations Coastal Bend, expressed as hourly rate (TWC):

Coastal Bend	All Occupations-	Average \$18.35/hr.	Entry level \$8.58/hr.	Experienced workers \$23.24/hr.	Top 10% \$33.56/hr.
Texas	All Occupations-	Average \$20.97/hr.	Entry level \$8.88/hr.	Experienced workers \$ 27.02/hr.	Top 10% \$39.64/hr.

- Educational Attainment for population 25 years of age and older - Corpus Christi (Census American Fact Finder/American Community Survey):

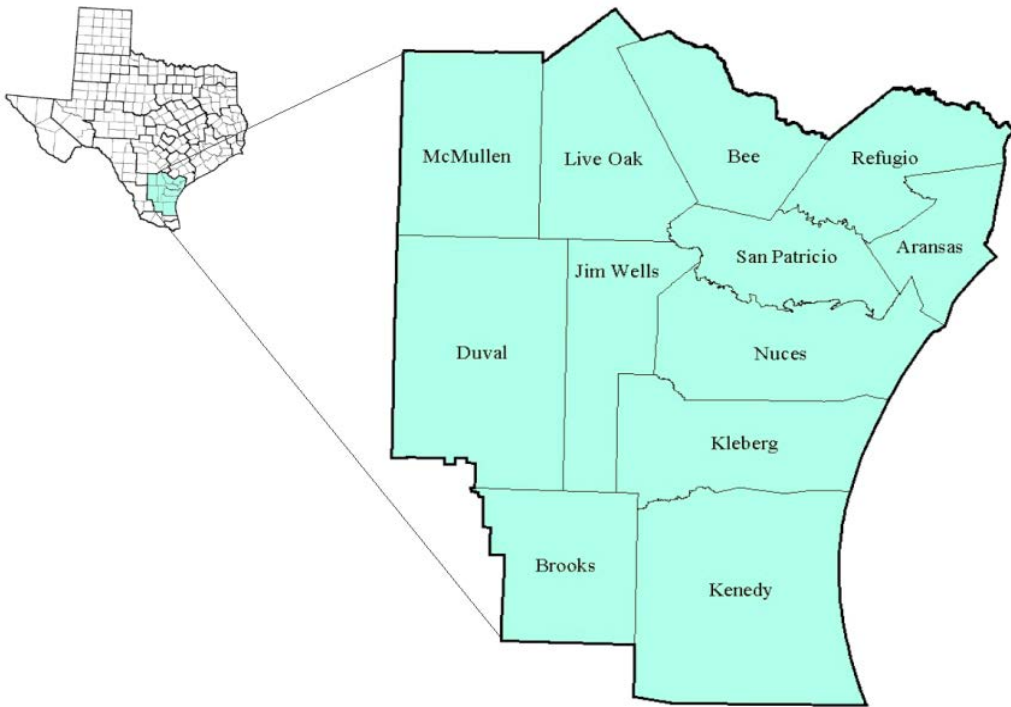
Less than 9th grade	8.7%	12th grade & GED	27.7%	Associates degree	7.0%	Graduate or Professional degrees	8.4%
9th thru 11th grade	9.3%	Some College	25.1%	Bachelors degree	13.8%		

- Median earnings Corpus Christi by education for persons 25 years of age & up (Census AFF/ACS): **\$27,211** (\$36,380 male/ \$22,328 female)

Less than High School	\$15,437	Some College or Associates	\$28,739	Graduate or Professional	\$56,681
High School & GED	\$26,818	Bachelor's	\$44,078		

Coastal Bend Workforce Development Area

April 2016



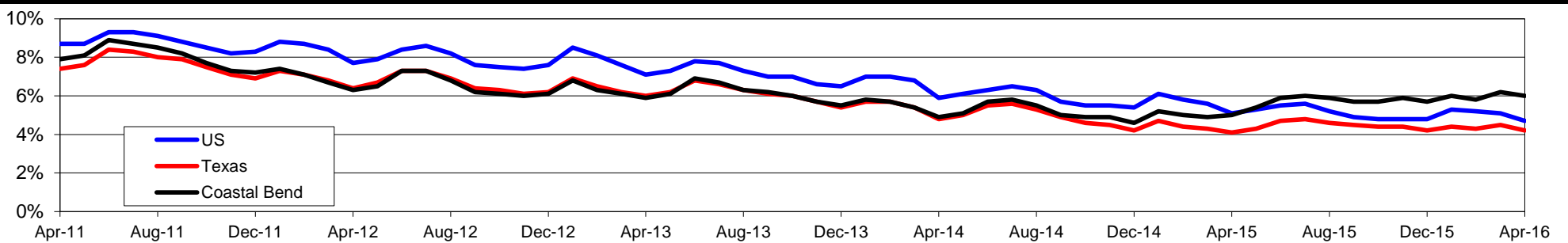
WDA Labor Force Statistics				
	Apr-16	Mar-16	Apr-15	OTY
CLF	274,353	275,163	271,055	3,298
Employed	257,879	258,103	257,493	386
Unemployed	16,474	17,060	13,562	2,912
Rate	6.0%	6.2%	5.0%	1.0%

Texas Labor Force Statistics				
	Apr-16	Mar-16	Apr-15	OTY
CLF	13,257,468	13,273,267	13,054,103	203,365
Employed	12,696,755	12,682,276	12,524,751	172,004
Unemployed	560,713	590,991	529,352	31,361
Rate	4.2%	4.5%	4.1%	0.1%

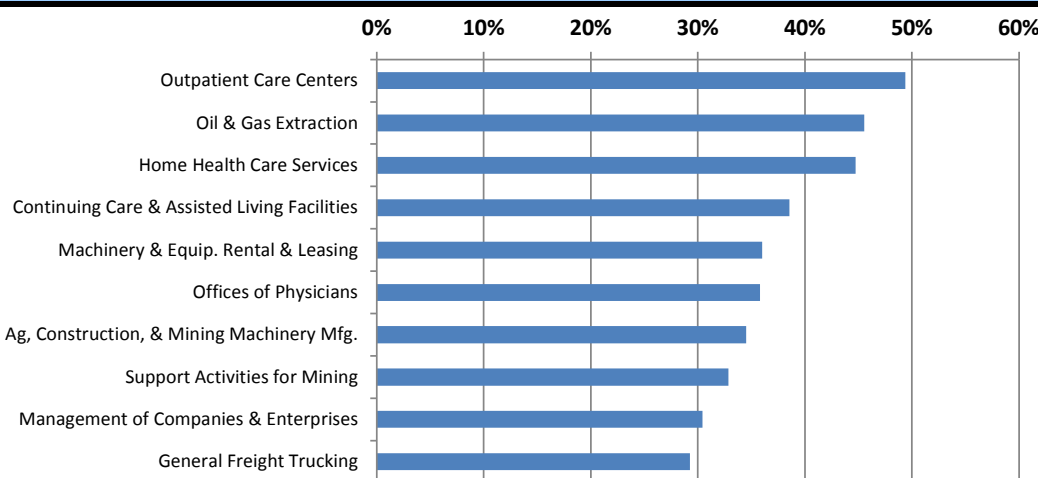
US Labor Force Statistics				
	Apr-16	Mar-16	Apr-15	OTY
CLF	158,488,000	158,854,000	156,554,000	1,934,000
Employed	151,075,000	150,738,000	148,587,000	2,488,000
Unemployed	7,413,000	8,116,000	7,966,000	-553,000
Rate	4.7%	5.1%	5.1%	-0.4%

Continued Claims for the Week of the 12th				
	Apr-16	Mar-16	Apr-15	OTY
WDA	5,245	5,411	4,445	800
Texas	147,304	148,766	136,451	10,853

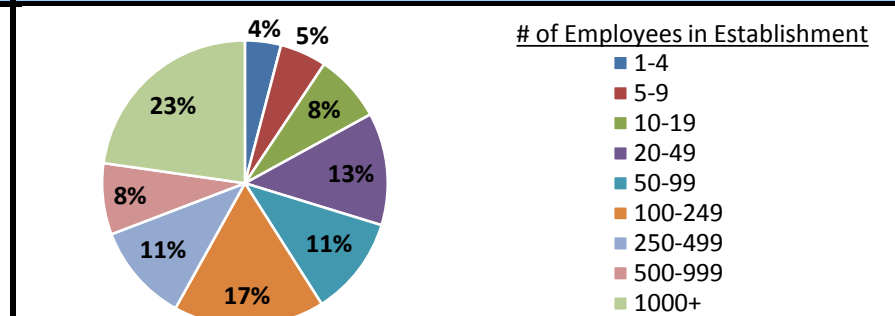
Historical Unemployment Rates



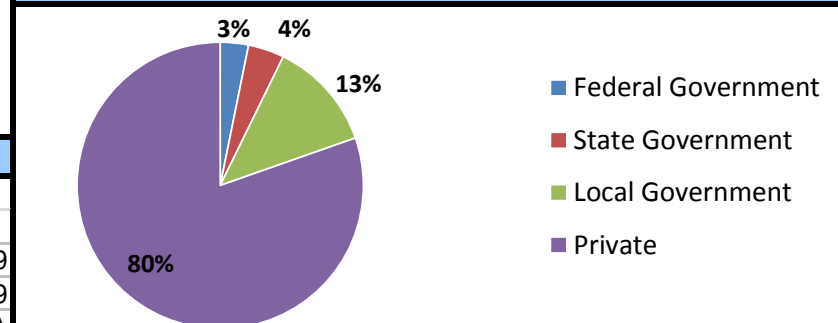
Projected Fastest Growing Industries in WDA (% growth 2012-2022)



Employment by Size Class (4th Quarter 2015)



Employment by Ownership (4th Quarter 2015)



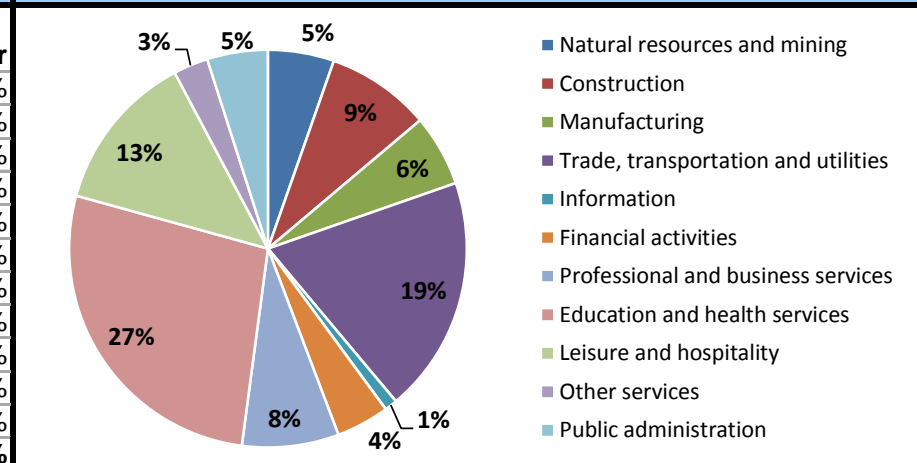
Average Weekly Wage (4th Quarter 2015)

	Q4 2015	Q3 2015	Q4 2014	Change	
				Quarter	Year
WDA	\$897	\$840	\$916	\$57	-\$19
Texas	\$1,099	\$999	\$1,070	\$100	\$29
US	N/A	\$968	\$949	N/A	N/A

Employment by Industry (4th Quarter 2015, Percent Change)

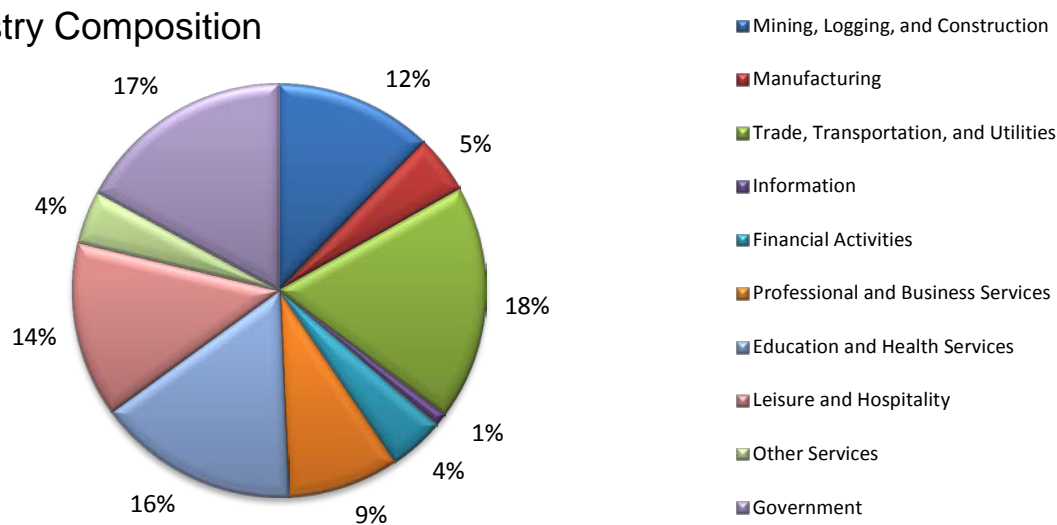
Industry	Employment	% of total	% Change	
			Quarter	Year
Natural resources and mining	12,991	5.4%	-5.8%	-33.9%
Construction	20,483	8.5%	-1.6%	-5.7%
Manufacturing	14,061	5.8%	-1.8%	-6.7%
Trade, transportation and utilities	46,502	19.2%	0.8%	-2.3%
Information	2,480	1.0%	3.1%	1.0%
Financial activities	10,434	4.3%	-0.2%	-3.8%
Professional and business services	19,016	7.9%	-0.4%	0.8%
Education and health services	65,730	27.2%	6.1%	1.7%
Leisure and hospitality	31,296	12.9%	-4.8%	1.5%
Other services	6,825	2.8%	-5.0%	-8.5%
Public administration	11,941	4.9%	0.7%	3.7%
Total	241,759	100.0%	0.3%	-3.5%

Employment by Industry (4th Quarter 2015)



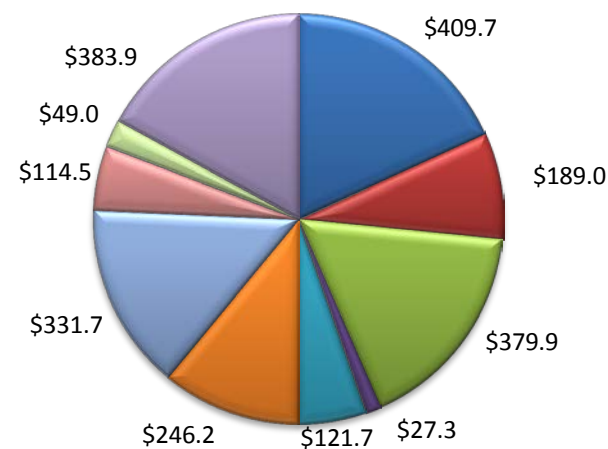
(Aransas, Nueces, San Patricio)

Industry Composition



Wages by Industry (in millions)

4th Quarter 2015



Employment by Industry

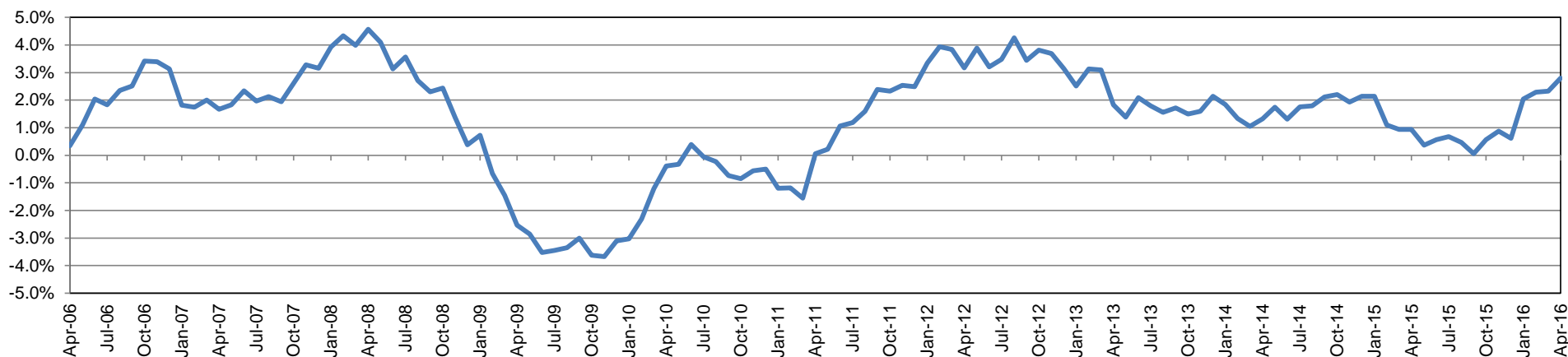
	Apr-16	Mar-16	Apr-15	Monthly Change		Annual Change	
				Actual	%	Actual	%
Total Nonfarm	198,900	198,100	193,500	800	0.4%	5,400	2.8%
Mining, Logging, and Construction	24,400	24,500	24,000	-100	-0.4%	400	1.7%
Manufacturing	9,100	9,100	9,400	0	0.0%	-300	-3.2%
Trade, Transportation, and Utilities	36,500	36,400	35,600	100	0.3%	900	2.5%
Information	2,000	2,000	2,000	0	0.0%	0	0.0%
Financial Activities	8,600	8,600	8,300	0	0.0%	300	3.6%
Professional and Business Services	17,500	17,400	17,000	100	0.6%	500	2.9%
Education and Health Services	31,200	30,900	29,600	300	1.0%	1,600	5.4%
Leisure and Hospitality	27,300	27,000	25,900	300	1.1%	1,400	5.4%
Other Services	8,200	8,100	8,000	100	1.2%	200	2.5%
Government	34,100	34,100	33,700	0	0.0%	400	1.2%

Industry Size Class

December 2015

Size Class	Employees per firm	Number of Firms	Employment in Size Class	% Total Employment
9	1000+	21	44,399	23.6%
8	500-999	19	13,026	6.9%
7	250-499	51	17,443	9.3%
6	100-249	223	33,827	18.0%
5	50-99	314	21,615	11.5%
4	20-49	843	25,507	13.6%
3	10-19	1,079	14,741	7.8%
2	5-9	1,501	9,995	5.3%
1	1-4	3,670	7,571	4.0%
0	0	585	0	0.0%
Total		8,306	188,124	100.0%

Annual Growth Rate for Total Nonagricultural Employment



Unemployment Information (all estimates in thousands)

	Corpus Christi MSA				Texas (Actual)				United States (Actual)			
	C.L.F.	Emp.	Unemp.	Rate	C.L.F.	Emp.	Unemp.	Rate	C.L.F.	Emp.	Unemp.	Rate
Apr-16	213.2	201.8	11.4	5.3	13,257.5	12,696.8	560.7	4.2	158,488.0	151,075.0	7,413.0	4.7
Mar-16	213.5	201.6	12.0	5.6	13,273.3	12,682.3	591.0	4.5	158,854.0	150,738.0	8,116.0	5.1
Apr-15	207.7	198.0	9.8	4.7	13,054.1	12,524.8	529.4	4.1	156,554.0	148,587.0	7,966.0	5.1

Historical Unemployment Rates

