

Coastal Bend Workforce Area

(Not Seasonally Adjusted Unemployment Rates by WDA, MSA, & County)

Area	Area Type	Latest Monthly Data December 2018						Previous Monthly Data November 2018				Year Ago December 2017			
		Labor Force	Employment	Unemployment	Rate	M+-	Y+-	Labor Force	Employment	Unemployment	Rate	Labor Force	Employment	Unemployment	Rate
United States	Nation	163,240,000	156,945,000	6,294,000	3.9	0.2	-0.2	162,821,000	156,803,000	6,018,000	3.7	160,636,000	154,065,000	6,572,000	4.1
Texas	State	13,902,459	13,387,366	515,093	3.7	0.0	-0.3	13,859,710	13,347,892	511,818	3.7	13,591,013	13,053,325	537,688	4.0
Corpus Christi	MSA	209,187	199,690	9,497	4.5	0.2	-0.8	208,905	199,948	8,957	4.3	206,176	195,292	10,884	5.3
Coastal Bend	WDA	265,231	253,132	12,099	4.6	0.3	-0.7	264,913	253,412	11,501	4.3	261,091	247,239	13,852	5.3
Aransas	County	10,288	9,815	473	4.6	0.1	-2.9	10,277	9,815	462	4.5	10,411	9,628	783	7.5
Bee	County	9,826	9,360	466	4.7	0.2	-0.8	9,793	9,350	443	4.5	9,742	9,205	537	5.5
Brooks	County	2,385	2,251	134	5.6	-0.3	-0.7	2,418	2,275	143	5.9	2,366	2,216	150	6.3
Duval	County	4,870	4,631	239	4.9	-0.1	-0.7	4,882	4,639	243	5.0	4,681	4,420	261	5.6
Jim Wells	County	16,881	16,058	823	4.9	0.0	-1.1	16,577	15,772	805	4.9	16,427	15,449	978	6.0
Kenedy	County	253	243	10	4.0	0.9	1.6	261	253	8	3.1	250	244	6	2.4
Kleberg	County	13,312	12,680	632	4.7	0.2	-0.2	13,415	12,809	606	4.5	13,132	12,487	645	4.9
Live Oak	County	5,449	5,278	171	3.1	0.0	-0.9	5,568	5,394	174	3.1	5,340	5,127	213	4.0
Nueces	County	168,517	161,192	7,325	4.3	0.2	-0.5	168,274	161,353	6,921	4.1	165,532	157,585	7,947	4.8
Refugio	County	3,068	2,941	127	4.1	0.2	-1.9	3,094	2,972	122	3.9	2,977	2,799	178	6.0
San Patricio	County	30,382	28,683	1,699	5.6	0.4	-1.5	30,354	28,780	1,574	5.2	30,233	28,079	2,154	7.1

(M+-) Change in unemployment rate from last month (Increase) (Decrease)

(Y+-) Change in unemployment rate from last year (Increase) (Decrease)

- Earnings for all occupations Coastal Bend, expressed as hourly rate (TWC):

Coastal Bend	All Occupations-	Average \$18.35/hr.	Entry level \$8.58/hr.	Experienced workers \$23.24/hr.	Top 10% \$33.56/hr.
Texas	All Occupations-	Average \$20.97/hr.	Entry level \$8.88/hr.	Experienced workers \$ 27.02/hr.	Top 10% \$39.64/hr.

- Educational Attainment for population 25 years of age and older - Corpus Christi (Census American Fact Finder/American Community Survey):

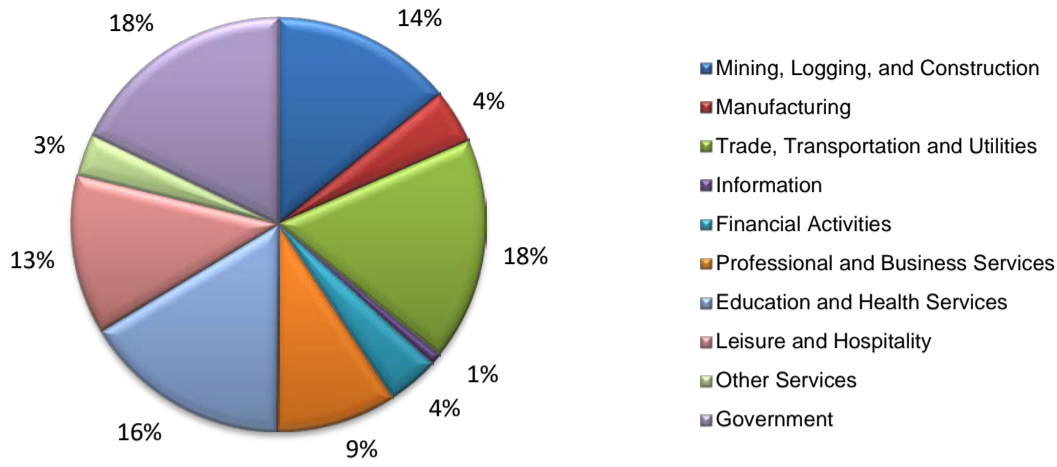
Less than 9th grade	8.7%	12th grade & GED	27.7%	Associates degree	7.0%	Graduate or Professional degrees	8.4%
9th thru 11th grade	9.3%	Some College	25.1%	Bachelors degree	13.8%		

- Median earnings Corpus Christi by education for persons 25 years of age & up (Census AFF/ACS): **\$27,211** (\$36,380 male/ \$22,328 female)

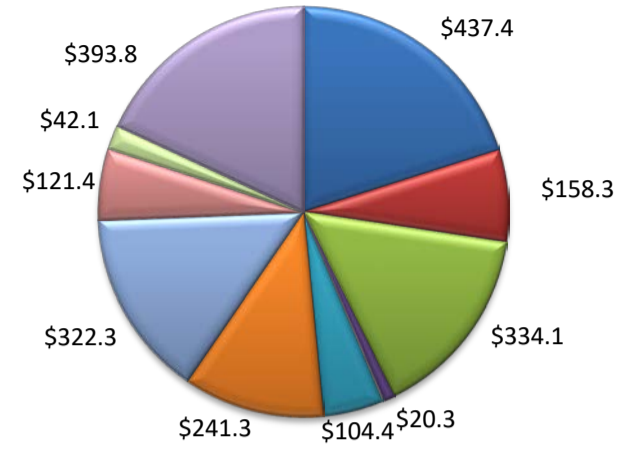
Less than High School	\$15,437	Some College or Associates	\$28,739	Graduate or Professional	\$56,681
High School & GED	\$26,818	Bachelor's	\$44,078		

(Aransas, Nueces, San Patricio)

Industry Composition



Wages by Industry (in millions)
2nd Quarter 2018



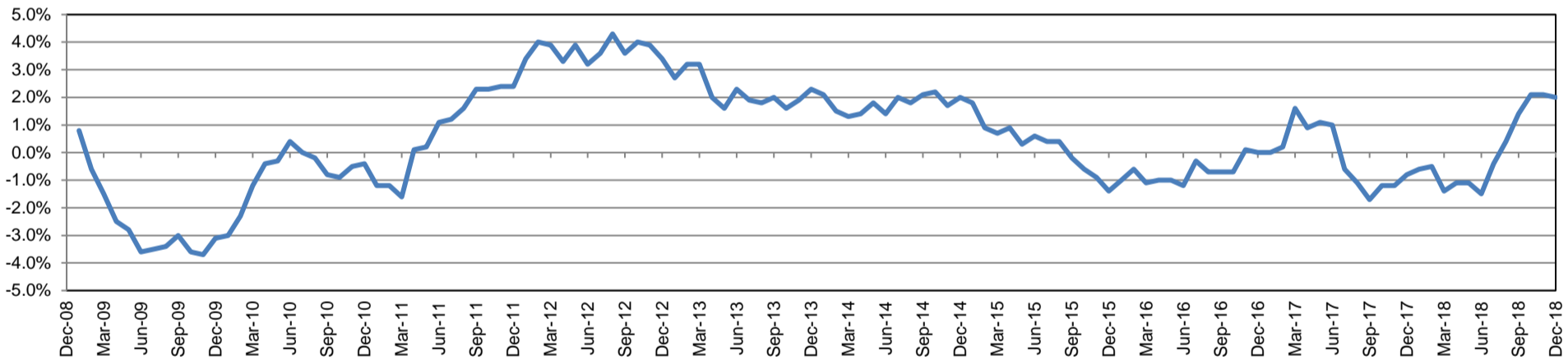
Employment by Industry

	Dec-18	Nov-18	Dec-17	Monthly Change		Annual Change	
				Actual	%	Actual	%
Total Nonfarm	195,900	196,200	192,000	-300	-0.2%	3,900	2.0%
Mining, Logging and Construction	27,700	28,100	26,200	-400	-1.4%	1,500	5.7%
Manufacturing	8,400	8,400	8,400	0	0.0%	0	0.0%
Trade, Transportation, and Utilities	34,100	34,200	33,700	-100	-0.3%	400	1.2%
Information	1,700	1,700	1,700	0	0.0%	0	0.0%
Financial Activities	7,900	7,900	7,700	0	0.0%	200	2.6%
Professional and Business Services	18,400	18,400	17,900	0	0.0%	500	2.8%
Education and Health Services	31,800	31,600	31,100	200	0.6%	700	2.3%
Leisure and Hospitality	24,400	24,400	23,700	0	0.0%	700	3.0%
Other Services	6,500	6,500	6,400	0	0.0%	100	1.6%
Government	35,000	35,000	35,200	0	0.0%	-200	-0.6%

Industry Size Class June 2018

Size Class	Employees per firm	Number of Firms	Employment in Size Class	% Total Employment
9	1000+	21	48,255	25.5%
8	500-999	21	13,639	7.2%
7	250-499	52	17,828	9.4%
6	100-249	218	32,198	17.0%
5	50-99	282	19,533	10.3%
4	20-49	844	25,831	13.7%
3	10-19	1,084	14,787	7.8%
2	5-9	1,489	9,867	5.2%
1	1-4	3,529	7,263	3.8%
0	0	703	0	0.0%
Total		8,243	189,201	100.0%

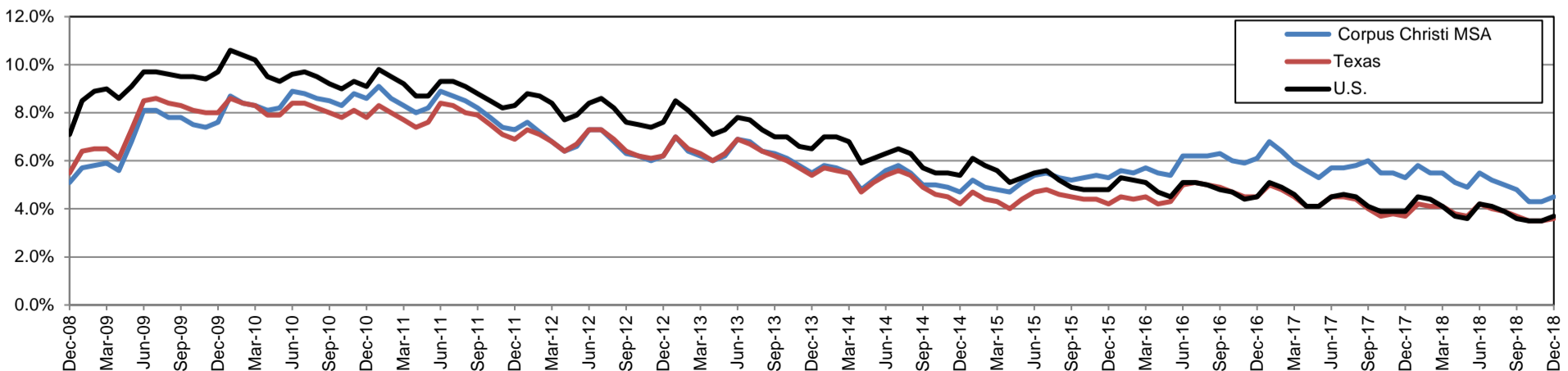
Annual Growth Rate for Total Nonagricultural Employment



Unemployment Information (all estimates in thousands)

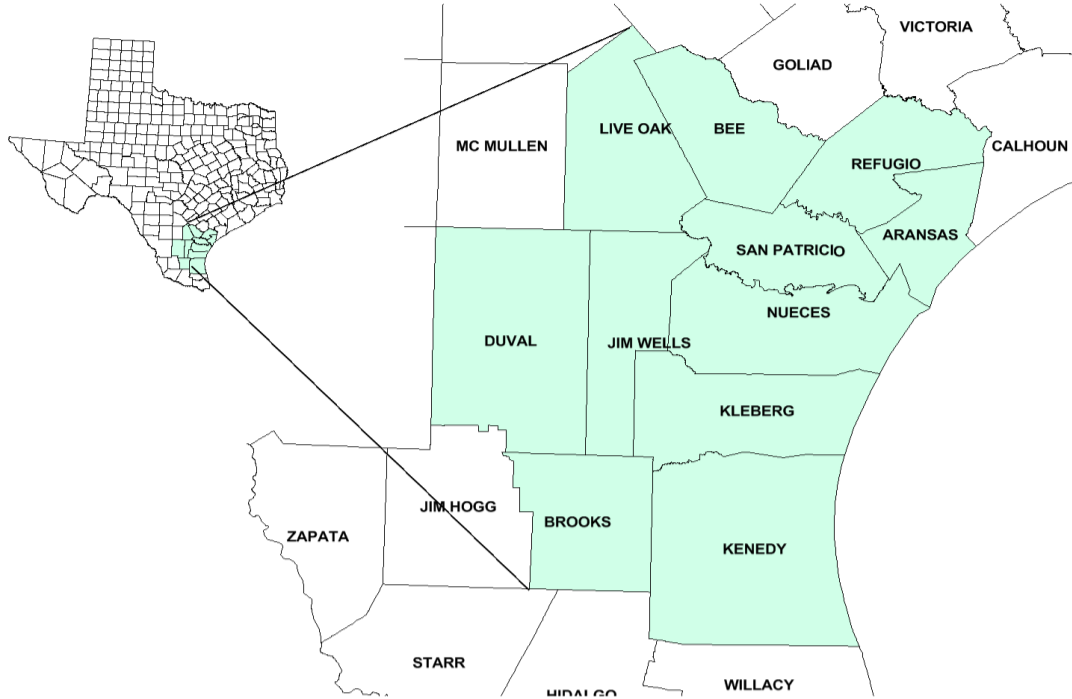
	Corpus Christi MSA				Texas (Actual)				United States (Actual)			
	C.L.F.	Emp.	Unemp.	Rate	C.L.F.	Emp.	Unemp.	Rate	C.L.F.	Emp.	Unemp.	Rate
Dec-18	209.2	199.7	9.5	4.5	13,976.3	13,471.7	504.7	3.6	162,510.0	156,481.0	6,029.0	3.7
Nov-18	208.9	199.9	9.0	4.3	13,937.1	13,454.5	482.5	3.5	162,665.0	157,015.0	5,650.0	3.5
Dec-17	206.2	195.3	10.9	5.3	13,598.1	13,096.2	501.8	3.7	159,880.0	153,602.0	6,278.0	3.9

Historical Unemployment Rates



Coastal Bend Workforce Development Area

December 2018



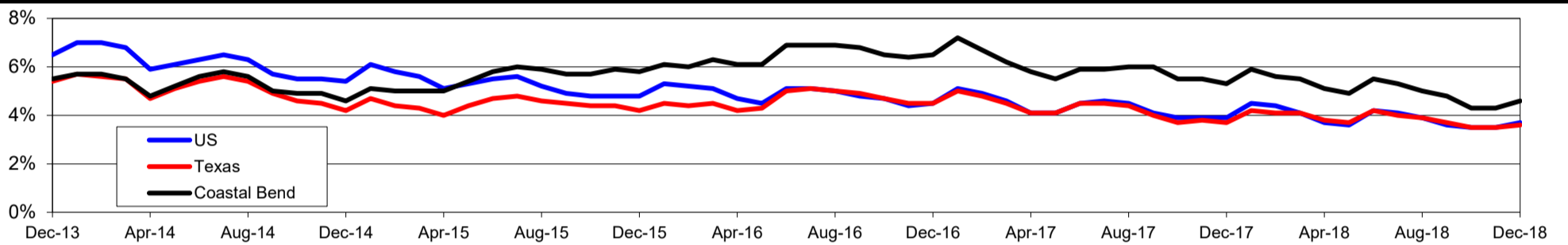
WDA Labor Force Statistics				
	Dec-18	Nov-18	Dec-17	OTY
CLF	265,231	264,913	261,091	4,140
Employed	253,132	253,412	247,239	5,893
Unemployed	12,099	11,501	13,852	-1,753
Rate	4.6%	4.3%	5.3%	-0.7%

Texas Labor Force Statistics				
	Dec-18	Nov-18	Dec-17	OTY
CLF	13,976,348	13,937,051	13,598,061	378,287
Employed	13,471,690	13,454,512	13,096,216	375,474
Unemployed	504,658	482,539	501,845	2,813
Rate	3.6%	3.5%	3.7%	-0.1%

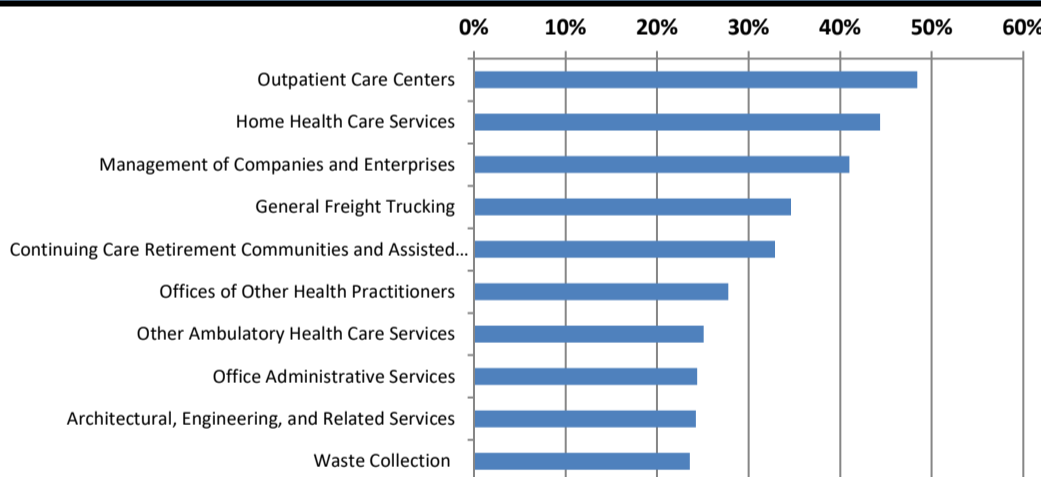
US Labor Force Statistics				
	Dec-18	Nov-18	Dec-17	OTY
CLF	162,510,000	162,665,000	159,880,000	2,630,000
Employed	156,481,000	157,015,000	153,602,000	2,879,000
Unemployed	6,029,000	5,650,000	6,278,000	-249,000
Rate	3.7%	3.5%	3.9%	-0.2%

Continued Claims for the Week of the 12th				
	Dec-18	Nov-18	Dec-17	OTY
WDA	2,197	1,994	3,589	-1,392
Texas	88,997	83,207	108,432	-19,435

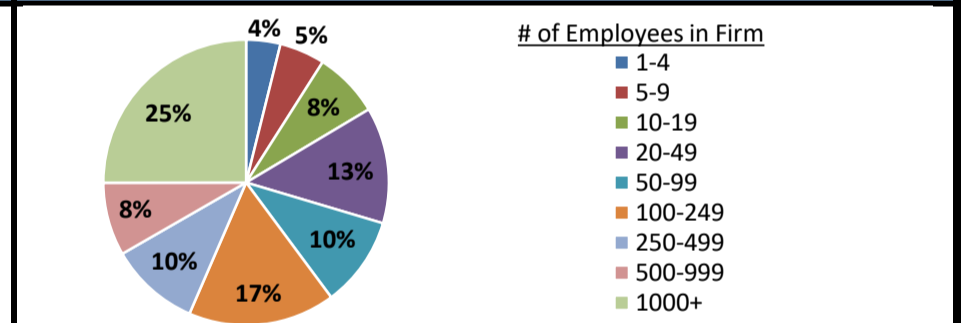
Historical Unemployment Rates



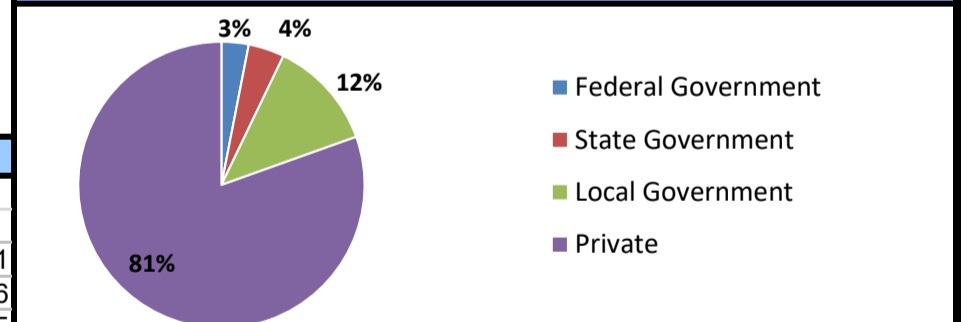
Projected Fastest Growing Industries in WDA (% growth 2016-2026)



Employment by Size Class (2nd Quarter 2018)



Employment by Ownership (2nd Quarter 2018)



Average Weekly Wage (2nd Quarter 2018)

	Q2 2018	Q1 2018	Q2 2017	Change	
				Quarter	Year
WDA	\$868	\$899	\$837	-\$31	\$31
Texas	\$1,062	\$1,167	\$1,027	-\$105	\$36
US	\$1,055	\$1,152	\$1,020	-\$97	\$35

Employment by Industry (2nd Quarter 2018, Percent Change)

Industry	Employment	% of total	% Change	
			Quarter	Year
Natural resources and mining	10,990	4.6%	4.7%	4.7%
Construction	23,760	10.0%	-3.0%	-3.7%
Manufacturing	12,373	5.2%	0.3%	-0.1%
Trade, transportation and utilities	42,948	18.0%	0.7%	-0.3%
Information	1,905	0.8%	-3.4%	-10.1%
Financial activities	9,857	4.1%	1.9%	4.5%
Professional and business services	20,037	8.4%	-0.4%	8.7%
Education and health services	66,706	28.0%	1.0%	-0.1%
Leisure and hospitality	32,118	13.5%	6.1%	-1.9%
Other services	5,882	2.5%	2.3%	-4.2%
Public administration	11,830	5.0%	0.1%	-1.6%
Total	238,406	100.0%	1.2%	0.1%

Employment by Industry (2nd Quarter 2018)

