

Coastal Bend Workforce Area

(Not Seasonally Adjusted Unemployment Rates by WDA, MSA, & County)

Area	Area Type	Latest Monthly Data December 2017						Previous Monthly Data November 2017				Year Ago December 2016			
		Labor Force	Employment	Unemployment	Rate	M+-	Y+-	Labor Force	Employment	Unemployment	Rate	Labor Force	Employment	Unemployment	Rate
United States	Nation	160,597,000	154,021,000	6,576,000	4.1	0.0	-0.6	160,533,000	153,917,000	6,616,000	4.1	159,640,000	152,111,000	7,529,000	4.7
Texas	State	13,547,022	13,024,811	522,211	3.9	0.1	-0.9	13,480,180	12,968,046	512,134	3.8	13,360,842	12,723,289	637,553	4.8
Corpus Christi	MSA	209,697	198,763	10,934	5.2	-0.1	-1.0	209,301	198,244	11,057	5.3	206,001	193,227	12,774	6.2
Coastal Bend	WDA	263,854	249,906	13,948	5.3	0.0	-1.3	263,431	249,339	14,092	5.3	261,754	244,444	17,310	6.6
Aransas	County	10,485	9,695	790	7.5	-0.6	1.4	10,488	9,639	849	8.1	10,030	9,421	609	6.1
Bee	County	9,801	9,251	550	5.6	-0.2	-2.1	9,731	9,170	561	5.8	10,088	9,316	772	7.7
Brooks	County	2,294	2,144	150	6.5	0.0	-3.9	2,289	2,140	149	6.5	2,341	2,098	243	10.4
Duval	County	4,597	4,334	263	5.7	-0.2	-4.6	4,623	4,351	272	5.9	4,667	4,185	482	10.3
Jim Wells	County	16,056	15,072	984	6.1	0.0	-3.7	16,054	15,074	980	6.1	16,641	15,009	1,632	9.8
Kenedy	County	225	219	6	2.7	-0.5	-3.1	221	214	7	3.2	189	178	11	5.8
Kleberg	County	13,124	12,462	662	5.0	0.1	-1.5	13,197	12,546	651	4.9	13,860	12,957	903	6.5
Live Oak	County	5,026	4,809	217	4.3	-0.1	-1.6	4,990	4,768	222	4.4	4,953	4,663	290	5.9
Nueces	County	168,441	160,467	7,974	4.7	-0.1	-1.2	168,086	160,061	8,025	4.8	165,715	155,981	9,734	5.9
Refugio	County	3,034	2,852	182	6.0	-0.4	-0.7	3,025	2,832	193	6.4	3,014	2,811	203	6.7
San Patricio	County	30,771	28,601	2,170	7.1	0.0	-0.9	30,727	28,544	2,183	7.1	30,256	27,825	2,431	8.0

(M+-) Change in unemployment rate from last month (Increase) (Decrease)

(Y+-) Change in unemployment rate from last year (Increase) (Decrease)

- Earnings for all occupations Coastal Bend, expressed as hourly rate (TWC):

Coastal Bend	All Occupations-	Average \$18.35/hr.	Entry level \$8.58/hr.	Experienced workers \$23.24/hr.	Top 10% \$33.56/hr.
Texas	All Occupations-	Average \$20.97/hr.	Entry level \$8.88/hr.	Experienced workers \$ 27.02/hr.	Top 10% \$39.64/hr.

- Educational Attainment for population 25 years of age and older - Corpus Christi (Census American Fact Finder/American Community Survey):

Less than 9th grade	8.7%	12th grade & GED	27.7%	Associates degree	7.0%	Graduate or Professional degrees	8.4%
9th thru 11th grade	9.3%	Some College	25.1%	Bachelors degree	13.8%		

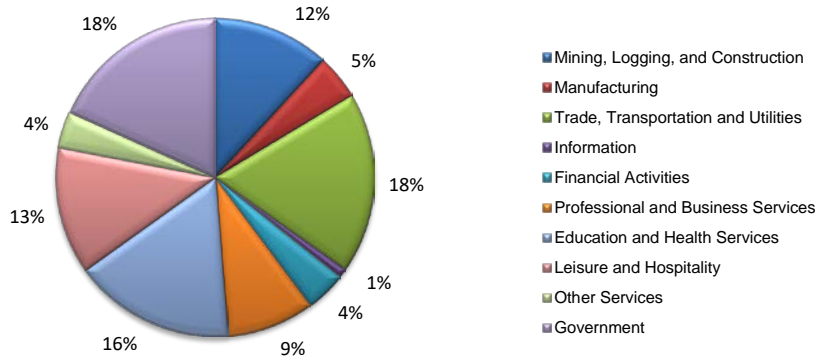
- Median earnings Corpus Christi by education for persons 25 years of age & up (Census AFF/ACS): **\$27,211** (\$36,380 male/ \$22,328 female)

Less than High School	\$15,437	Some College or Associates	\$28,739	Graduate or Professional	\$56,681
High School & GED	\$26,818	Bachelor's	\$44,078		

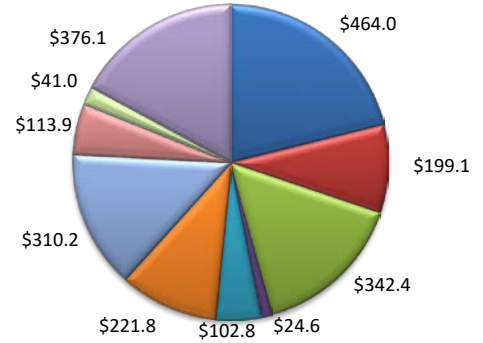
Equal Opportunity Employer/Program. Auxiliary aids and services are available upon request to individuals with disabilities.
Deaf, hard-of-hearing or speech impaired customers may contact **Relay Texas:** 1-800-735-2989 (TDD) and 1-800-735-2988 or 7-1-1 (Voice)

(Aransas, Nueces, San Patricio)

Industry Composition



Wages by Industry (in millions)
2nd Quarter 2017



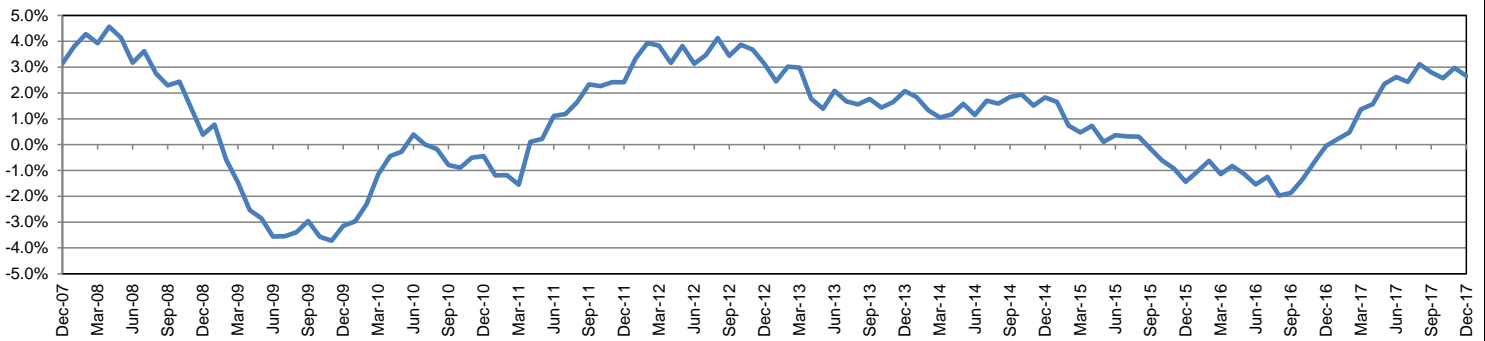
Employment by Industry

				Monthly Change		Annual Change	
	Dec-17	Nov-17	Dec-16	Actual	%	Actual	%
Total Nonfarm	197,300	197,300	192,200	0	0.0%	5,100	2.7%
Mining, Logging, and Construction	23,300	23,600	21,800	-300	-1.3%	1,500	6.9%
Manufacturing	9,100	9,000	8,800	100	1.1%	300	3.4%
Trade, Transportation, and Utilities	36,200	36,300	35,300	-100	-0.3%	900	2.5%
Information	1,800	1,800	1,800	0	0.0%	0	0.0%
Financial Activities	8,100	7,900	7,700	200	2.5%	400	5.2%
Professional and Business Services	17,700	17,800	16,600	-100	-0.6%	1,100	6.6%
Education and Health Services	32,300	32,000	31,900	300	0.9%	400	1.3%
Leisure and Hospitality	25,400	25,500	25,500	-100	-0.4%	-100	-0.4%
Other Services	7,300	7,300	7,200	0	0.0%	100	1.4%
Government	36,100	36,100	35,600	0	0.0%	500	1.4%

Industry Size Class

Size Class	Employees per firm	Number of Firms	June 2017	
			Employment in Size Class	% Total Employment
9	1000+	21	49,532	26.1%
8	500-999	16	11,154	5.9%
7	250-499	51	17,911	9.4%
6	100-249	224	33,502	17.6%
5	50-99	285	19,997	10.5%
4	20-49	825	25,475	13.4%
3	10-19	1,110	15,211	8.0%
2	5-9	1,508	9,987	5.3%
1	1-4	3,493	7,203	3.8%
0	0	717	0	0.0%
Total		8,250	189,972	100.0%

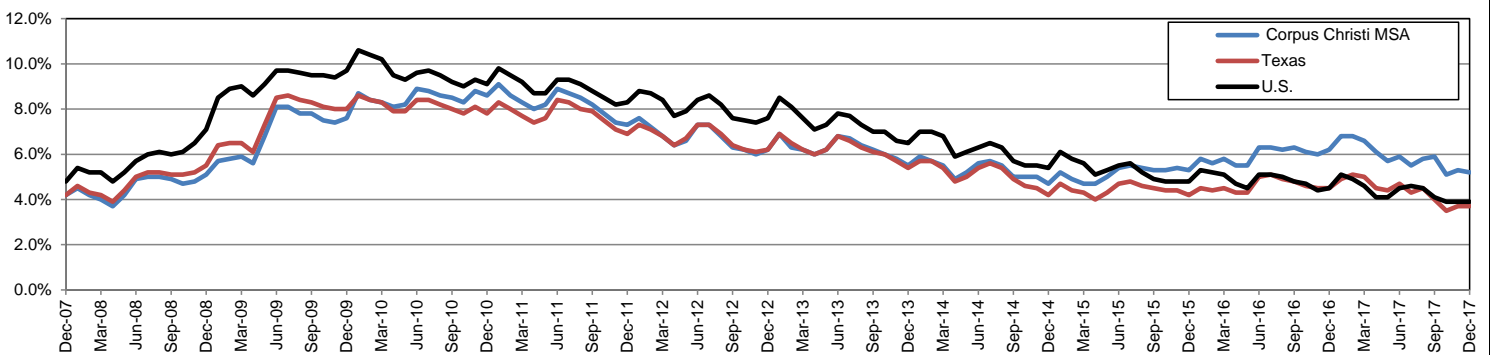
Annual Growth Rate for Total Nonagricultural Employment



Unemployment Information (all estimates in thousands)

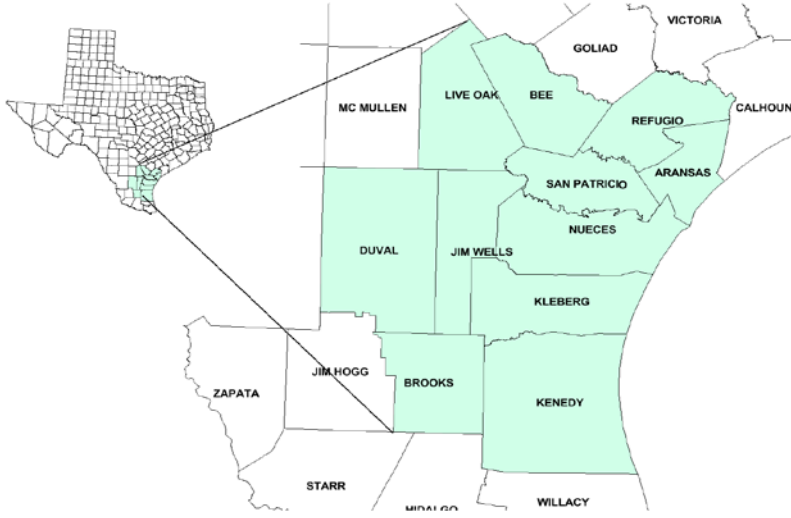
	Corpus Christi MSA				Texas (Actual)				United States (Actual)			
	C.L.F.	Emp.	Unemp.	Rate	C.L.F.	Emp.	Unemp.	Rate	C.L.F.	Emp.	Unemp.	Rate
Dec-17	209.7	198.8	10.9	5.2	13,545.3	13,044.0	501.3	3.7	159,880.0	153,602.0	6,278.0	3.9
Nov-17	209.3	198.2	11.1	5.3	13,500.9	13,001.6	499.3	3.7	160,466.0	154,180.0	6,286.0	3.9
Dec-16	206.0	193.2	12.8	6.2	13,353.3	12,747.3	606.0	4.5	158,968.0	151,798.0	7,170.0	4.5

Historical Unemployment Rates



Coastal Bend Workforce Development Area

December 2017



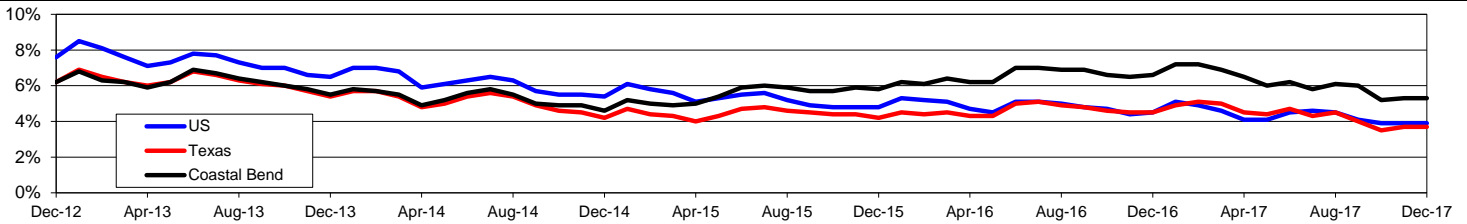
	Dec-17	Nov-17	Dec-16	OTY
CLF	263,854	263,431	261,754	2,100
Employed	249,906	249,339	244,444	5,462
Unemployed	13,948	14,092	17,310	-3,362
Rate	5.3%	5.3%	6.6%	-1.3%

	Dec-17	Nov-17	Dec-16	OTY
CLF	13,545,282	13,500,872	13,353,321	191,961
Employed	13,043,959	13,001,592	12,747,329	296,630
Unemployed	501,323	499,280	605,992	-104,669
Rate	3.7%	3.7%	4.5%	-0.8%

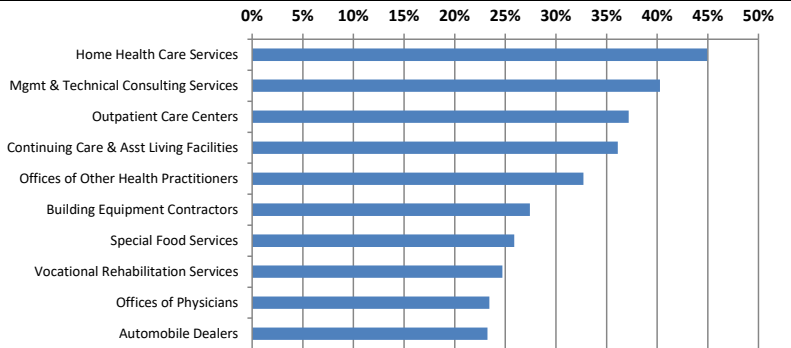
	Dec-17	Nov-17	Dec-16	OTY
CLF	159,880,000	160,466,000	158,968,000	912,000
Employed	153,602,000	154,180,000	151,798,000	1,804,000
Unemployed	6,278,000	6,286,000	7,170,000	-892,000
Rate	3.9%	3.9%	4.5%	-0.6%

	Dec-17	Nov-17	Dec-16	OTY
WDA	3,580	3,801	4,331	-751
Texas	108,432	105,083	129,904	-21,472

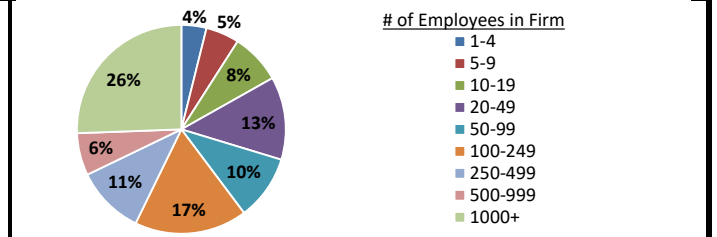
Historical Unemployment Rates



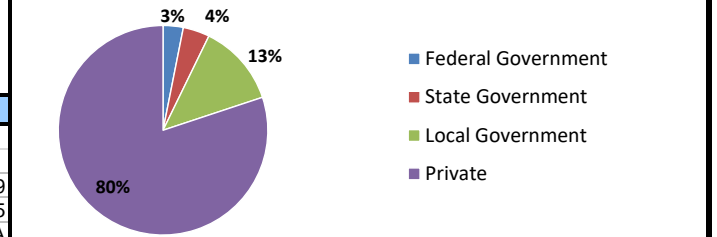
Projected Fastest Growing Industries in WDA (% growth 2014-2024)



Employment by Size Class (2nd Quarter 2017)



Employment by Ownership (2nd Quarter 2017)



Average Weekly Wage (2nd Quarter 2017)

	Q2 2017	Q1 2017	Q2 2016	Change	
				Quarter	Year
WDA	\$837	\$879	\$818	-\$42	\$19
Texas	\$1,026	\$1,124	\$1,000	-\$99	\$25
US	N/A	\$1,111	\$988	N/A	N/A

Employment by Industry (2nd Quarter 2017, Percent Change)

Industry	Employment	% of total	% Change	
			Quarter	Year
Natural resources and mining	10,469	4.4%	6.9%	11.4%
Construction	24,645	10.3%	-0.1%	6.8%
Manufacturing	12,376	5.2%	-1.1%	-6.1%
Trade, transportation and utilities	43,129	18.1%	0.8%	-1.7%
Information	2,119	0.9%	-0.9%	-5.8%
Financial activities	9,417	4.0%	1.8%	0.1%
Professional and business services	18,424	7.7%	0.1%	-0.4%
Education and health services	66,756	28.0%	0.1%	1.9%
Leisure and hospitality	32,659	13.7%	6.5%	0.3%
Other services	6,127	2.6%	1.9%	-5.9%
Public administration	12,027	5.1%	0.1%	0.7%
Total	238,148	100.0%	1.4%	0.8%

Employment by Industry (2nd Quarter 2017)

